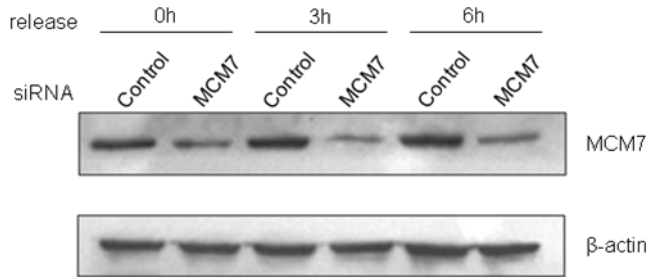


Supplemental data

FIGURE S1. Knock down of MCM7 does not affect S phase progression. A, B. HeLa cells were transfected with MCM7 siRNA or control siRNA and synchronized at G1 phase. Then the cells were released for 3 h and 6 h respectively. The cell lysates were immunoblotted with MCM7 antibody (A). The cells were also collected for flow cytometry analysis (B, left) and the percentage of S phase cells was calculated (B, right).

A



B

