

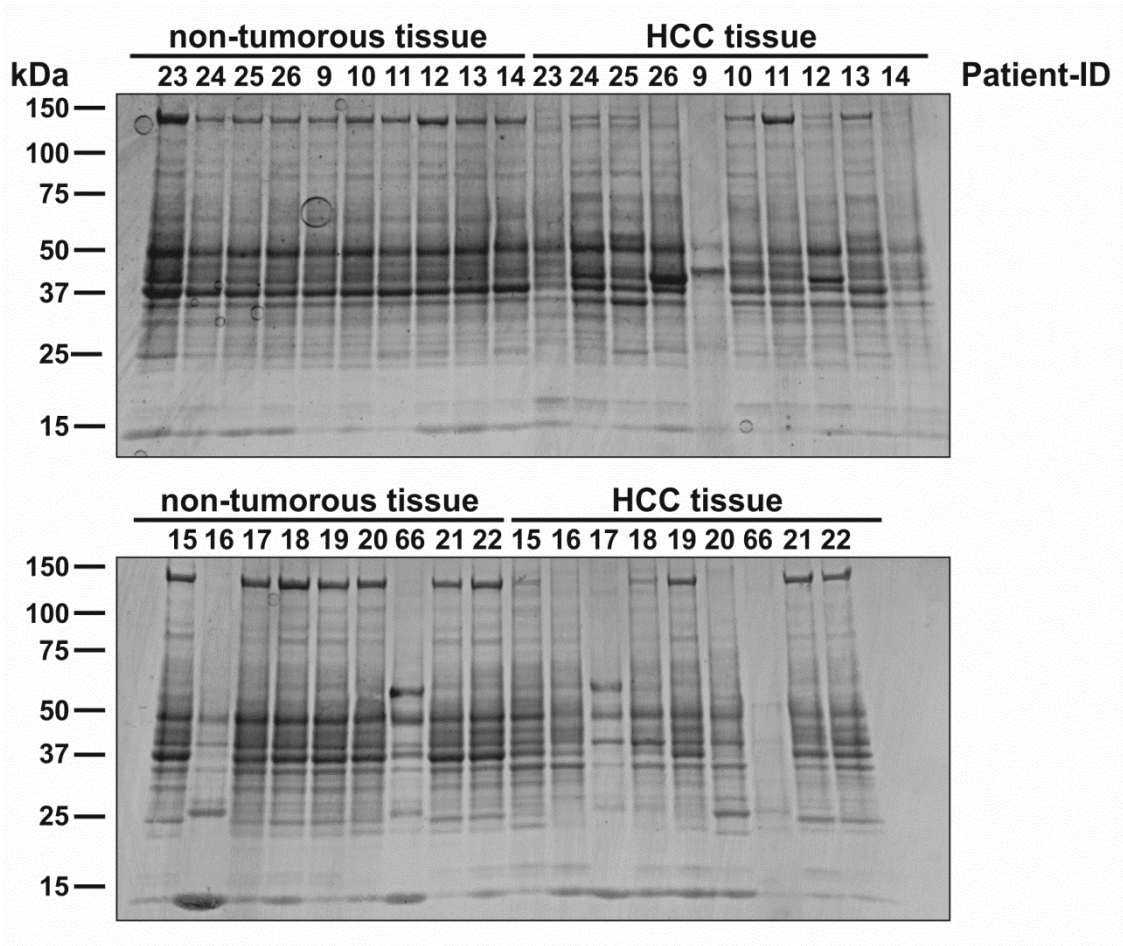
**Proteomic differences between hepatocellular carcinoma
and non-tumorous liver tissue investigated by a combined
2D-DIGE and label-free quantitative proteomics study**

Supplemental Data 7:

Content:

- Coomassie-stained gel of the samples used in the second verification experiment.
- Western blots and densitometric analysis of the six candidate proteins.

Coomassie-stained gel of the sample set used in the 2nd verification



Coomassie-stained gel of the samples used in the second verification set shows the degradation of the following samples: 9 (tumor), 16(non-tumor), 17 (tumor), 66 (both states). These samples were excluded during densitometric analysis.

Western blots and densitometric analysis of the six candidate proteins

