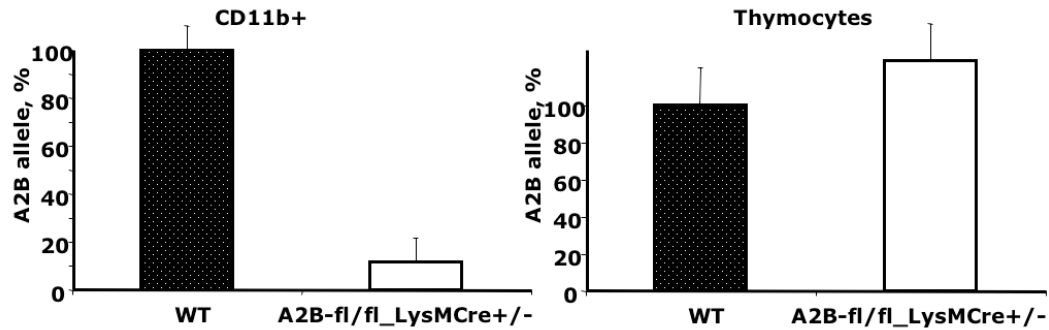


Supplemental Figure 1. **Generation of A2BR KO mice.** Strategy used to disrupt exon II of A2BR (A). Southern blot before (B) and after Cre-mediated deletion of the exon II and Neo (C). PCR analysis of gDNA obtained from A2BR^{+/+} and A2BR^{-/-} mice tails (D).



Supplemental Figure 2. **Evaluation of Cre-mediated deletion of A2BR allele in myeloid cells.** Cre-mediated deletion of A2BR in genomic DNA of the myeloid cells was evaluated using real-time PCR. Macrophages were obtained from peritoneal lavage of WT and A2BR-flox/flox_LysMCre^{+/-} mice after 24 hrs of CLP and analyzed by FACS using CD11b. 20,000 cells in 5ul PBS were added to the SYBR Green master mix and subject to the real-time PCR by using the A2BR-exon II-specific primers (TCCTGGGGTGAACAGTAAAGAC and GTAGGCATAGACAATGGGGTTGAC). Relative quantities of the floxed A2BR exon II were measured using comparative Ct analysis. Thymocytes from the same mice were used as a negative control.