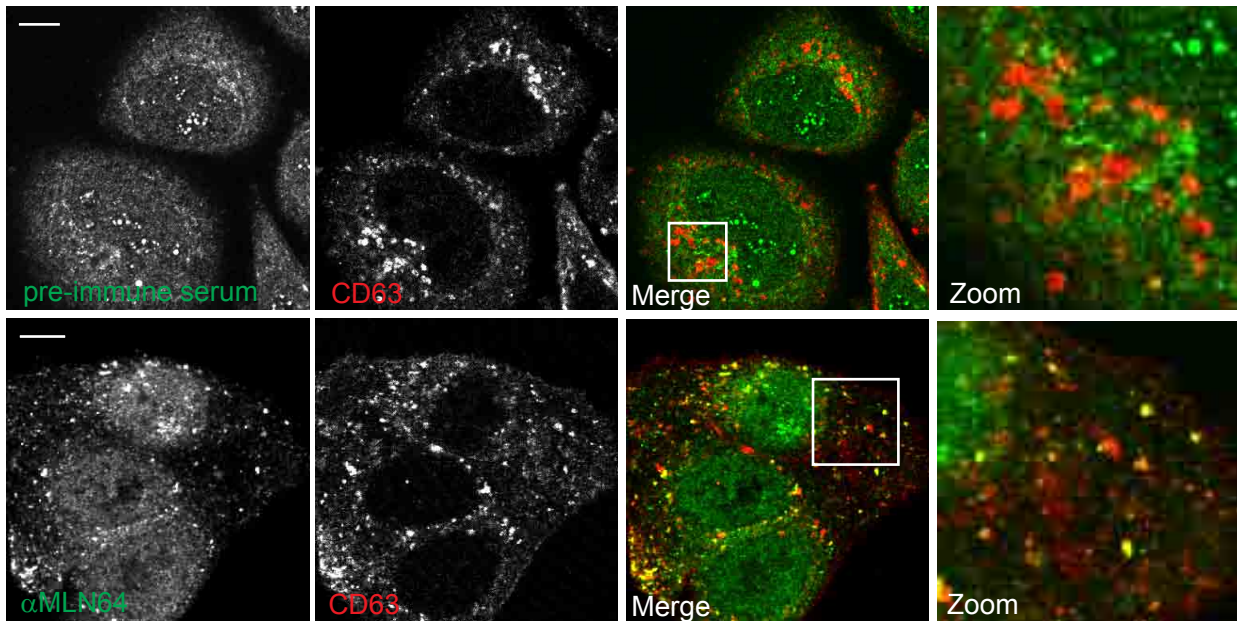
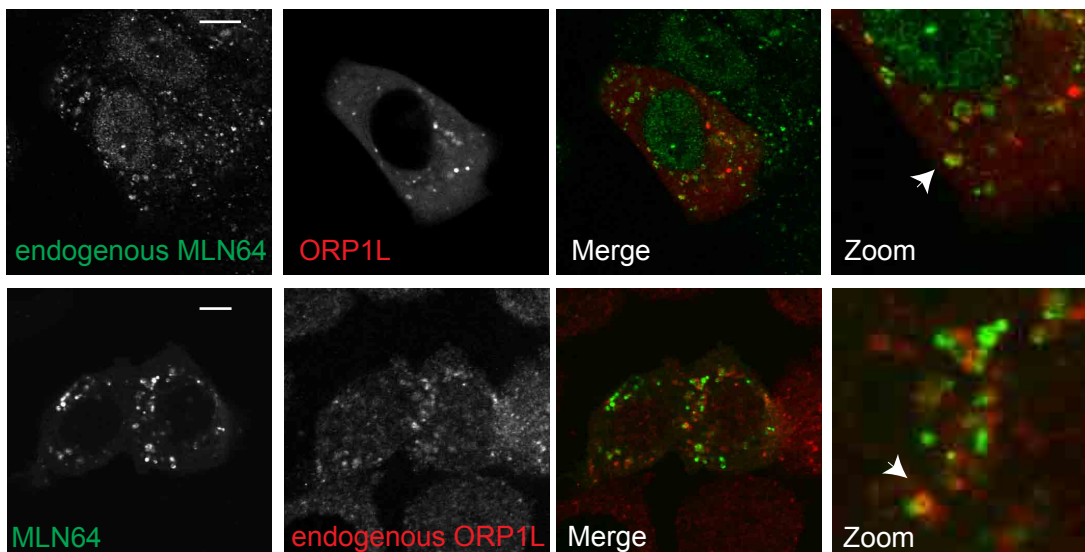


S1

**Figure S1**

(B) SKBR3 cells un-transfected were paraformaldehyde (PFA) fixed, permeabilized and immunolabelled by pre-immune serum (upper panel) or anti-MLN64 (lower panel) antibodies before imaging by confocal microscopy. Zoom-ins of merged pictures indicated. Scale bar: 10 μ m. n>100.

S2

**Figure S2**

Upper panel; SKBR3 cells expressing mRFP-ORP1L (red) were PFA fixed, permeabilized and immunolabelled by anti-MLN64 antibodies (green) before imaging by confocal microscopy. Lower panel; SKBR3 cells expressing MLN64-YFP (green) were PFA fixed, permeabilized and immunolabelled with anti-ORP1L antibodies (red) before imaging by confocal microscopy. Zoom-ins of merged pictures indicated. Scale bar: 10 μ m. n>100. White arrow indicates vesicle positive for both MLN64 and ORP1L. Right panel: Scatter plots of pixel intensities for respective channels of entire image.

S3

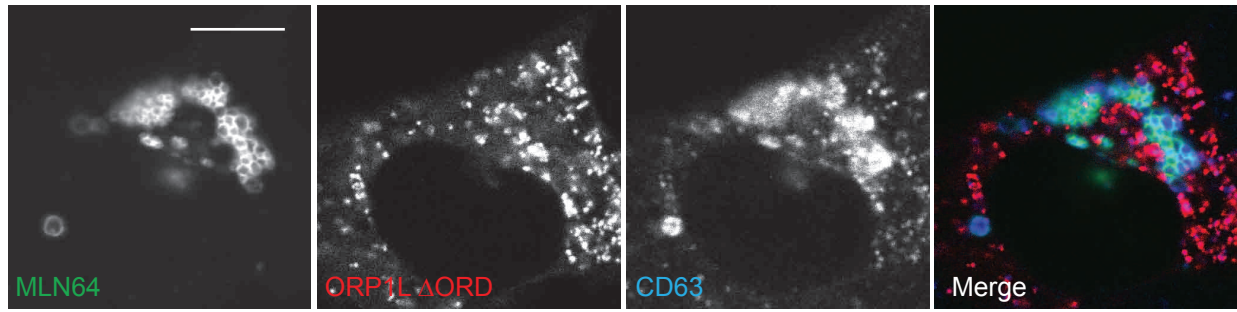


Figure S3

MelJuSo cells expressing MLN64-YFP (green) and mRFP-ORP1L Δ ORD (red) were PFA fixed and imaged by confocal microscopy. Zoom-ins of merged pictures indicated. Scale bar: 10 μ m. n>100. Scale bar: 10 μ m. n>100.

S4

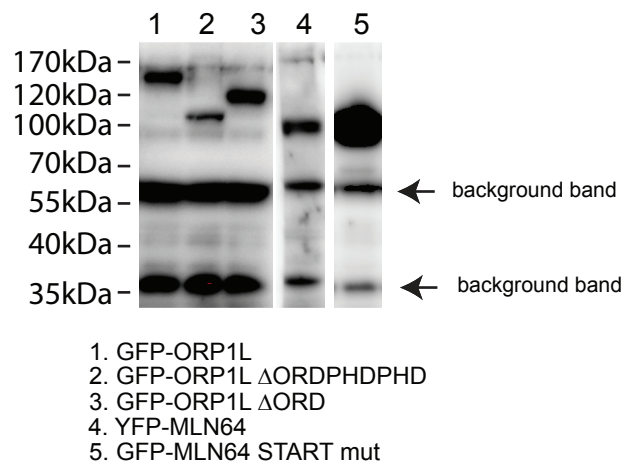


Figure S4

Lysates of MelJuSo cells expressing indicated constructs were analyzed by SDS-PAGE and WB before probing with the anti-GFP antibodies (GFP-antibodies also recognizing YFP-epitope). Position of protein marker as indicated.