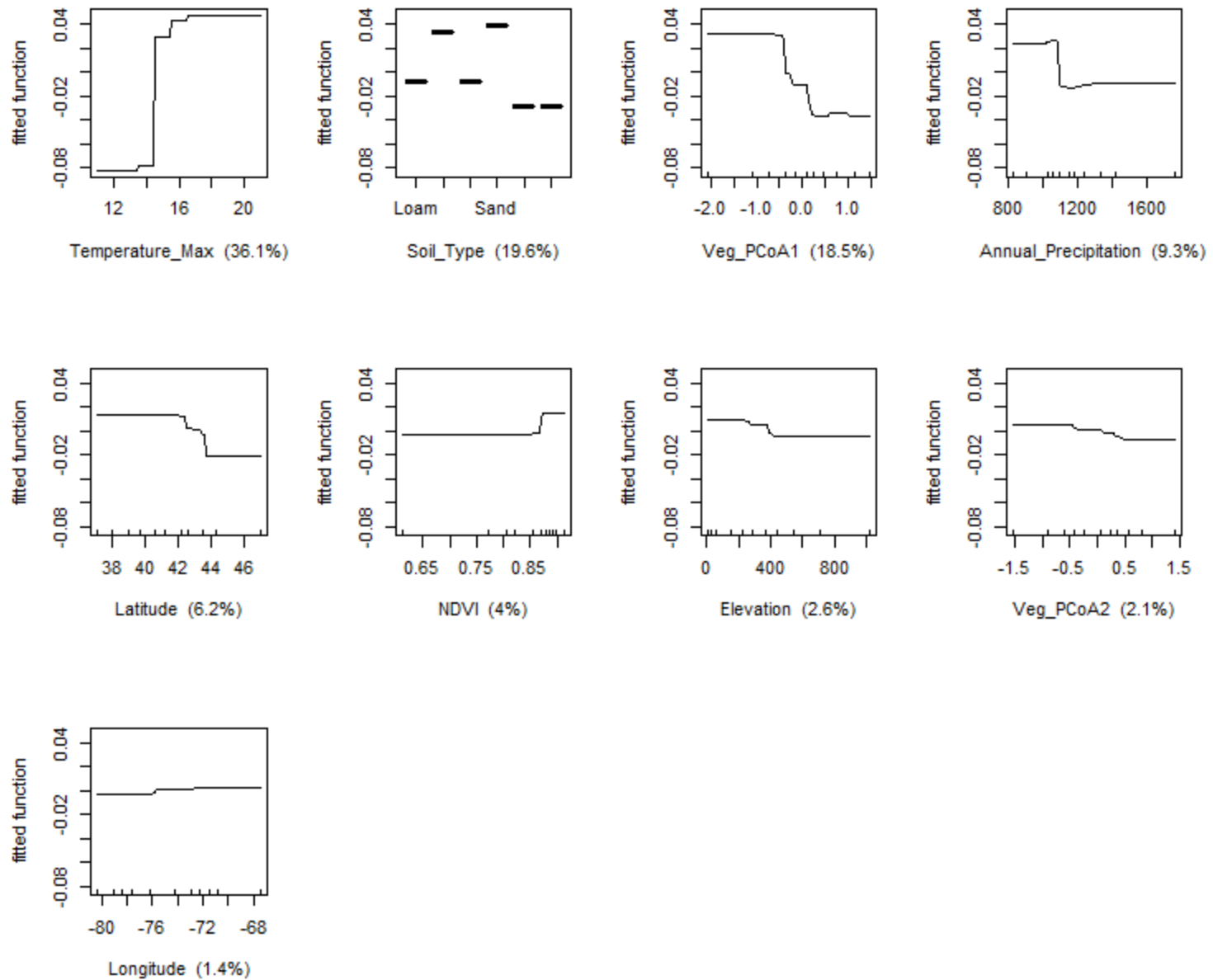
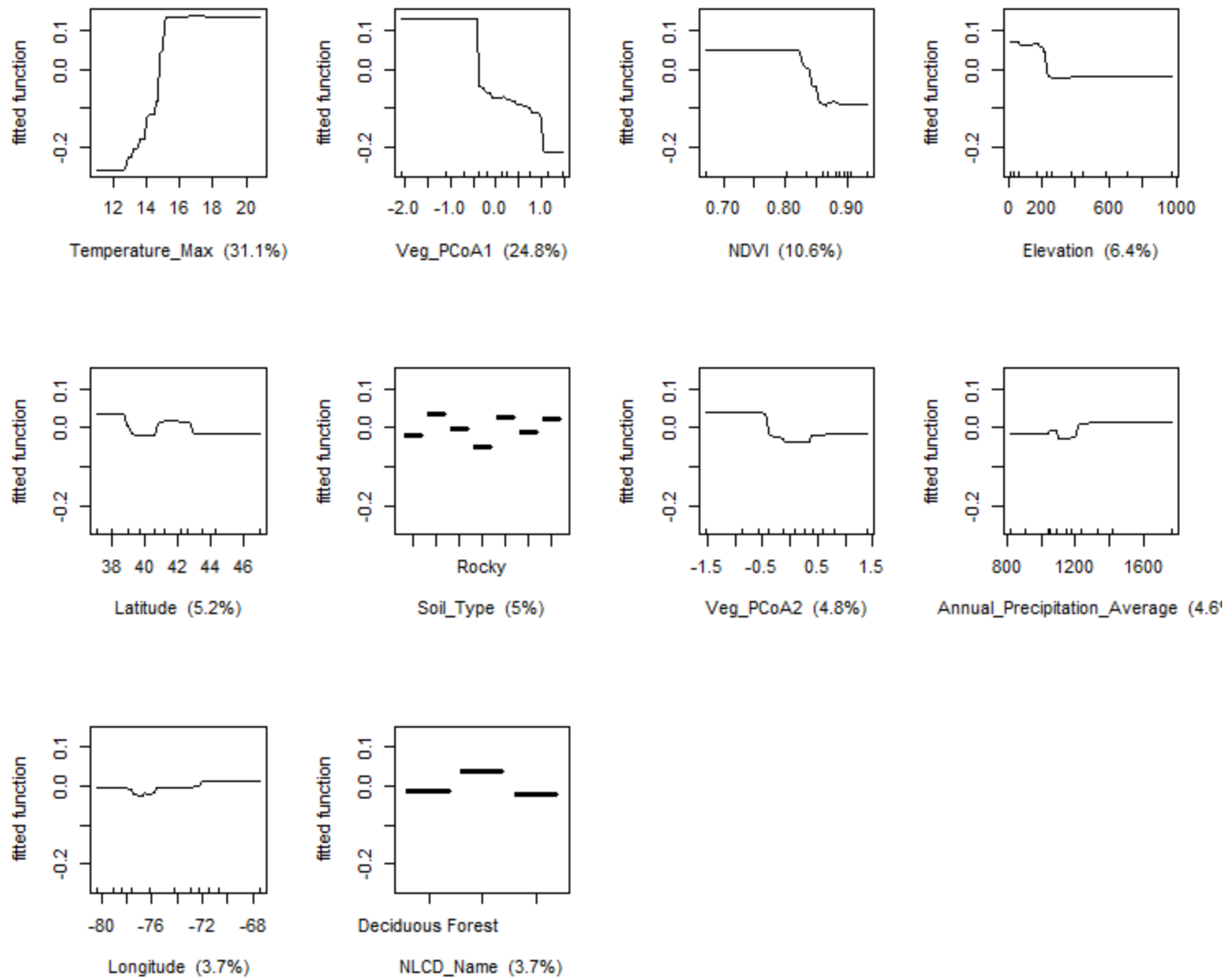


### Species\_Observed - page



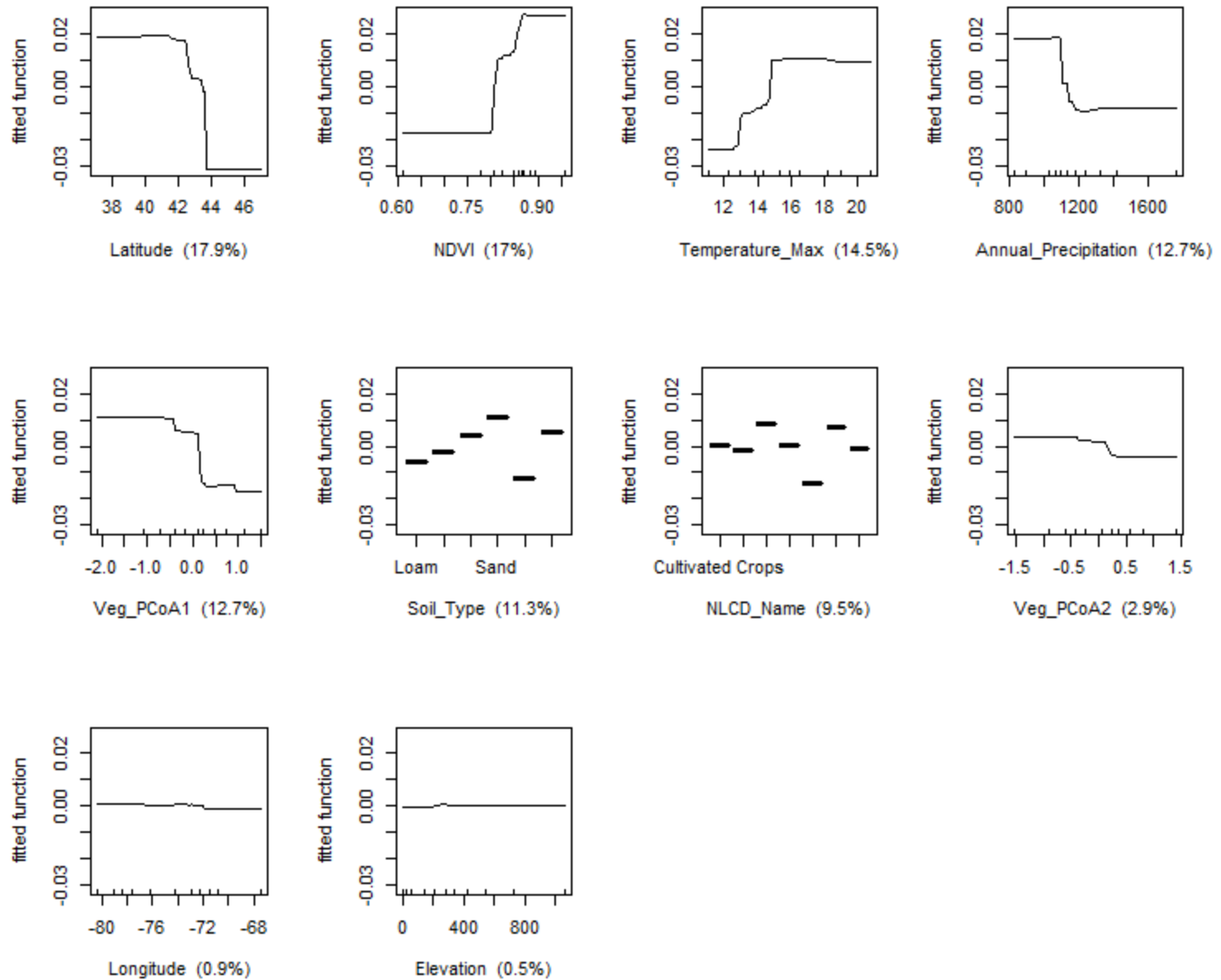
File S5 Figure S3: Combined datasets BRT Fitted Functions for each environmental variable

### Species\_Observed - page

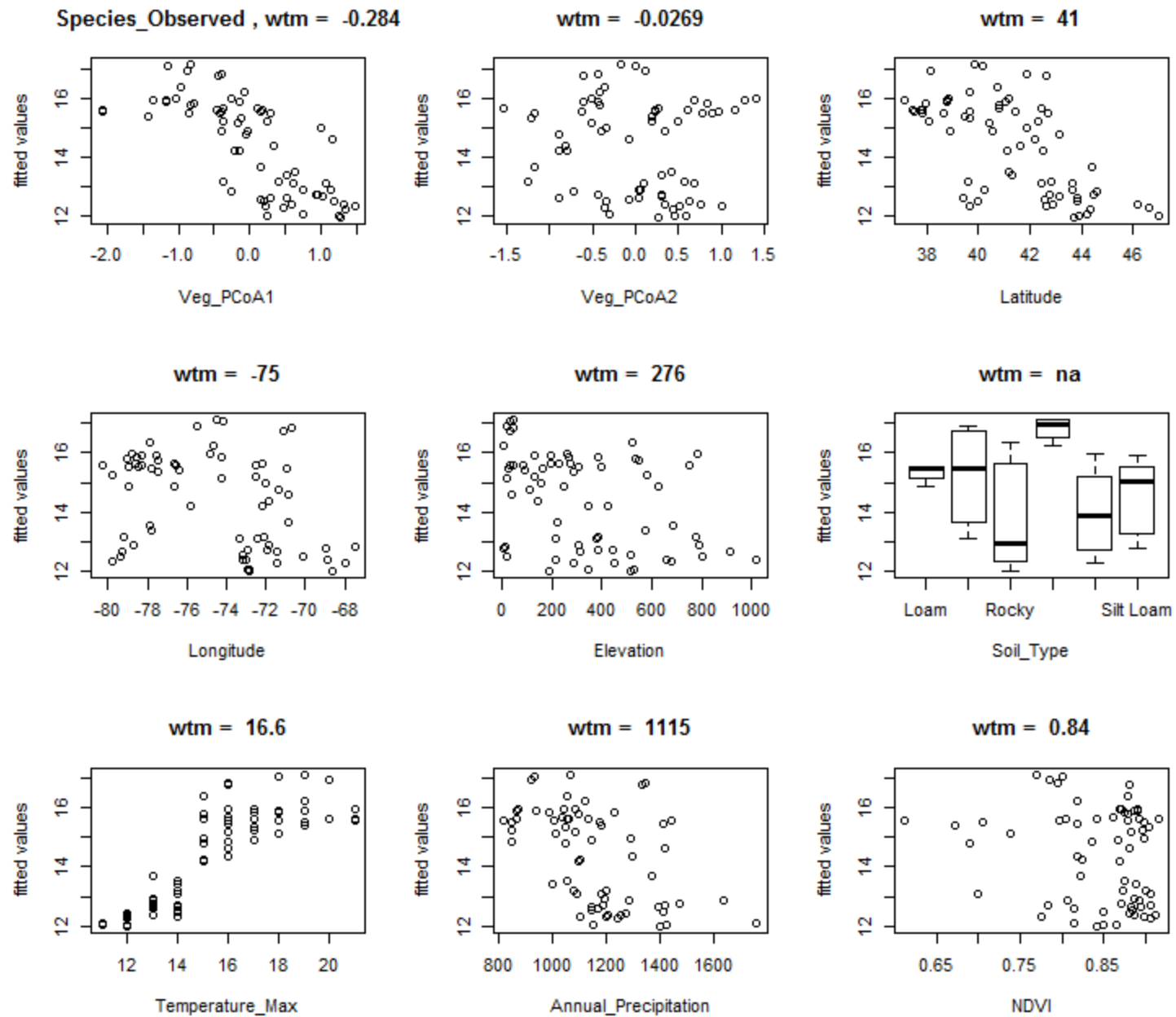


File S5 Figure-S4: Forest dataset BRT Fitted Functions for each environmental variable

### Species\_Observed - page

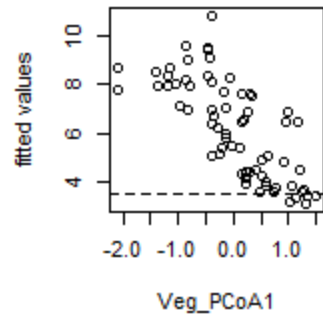


File S5 Figure S5: Open dataset BRT Fitted Functions for each environmental variable

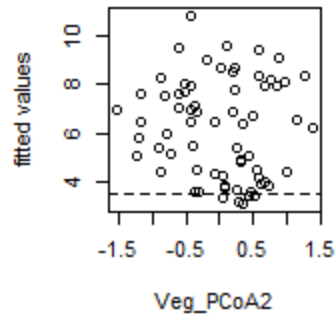


File S5 Figure S6: Combined datasets BRT Fitted Values for each environmental variable

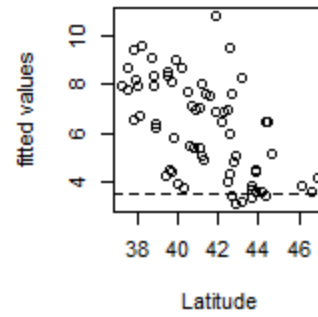
Species\_Observed , wtm = -.4



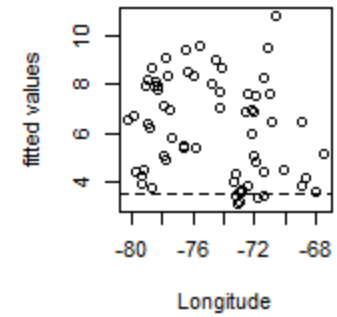
wtm = -0.00171



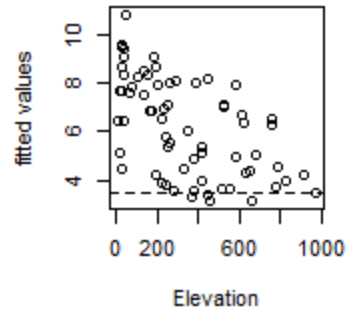
wtm = 40



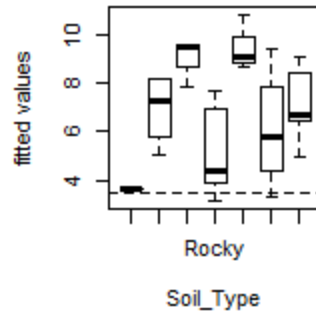
wtm = -.75



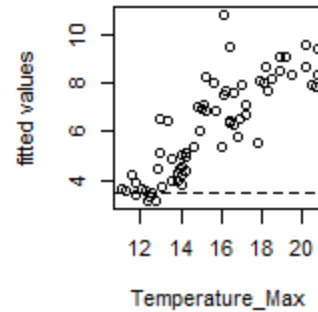
wtm = 170



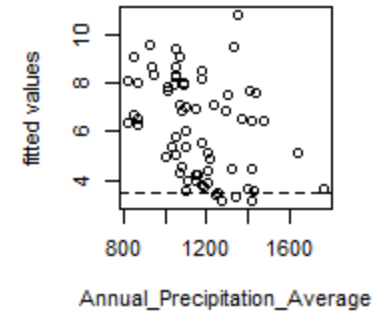
wtm = na



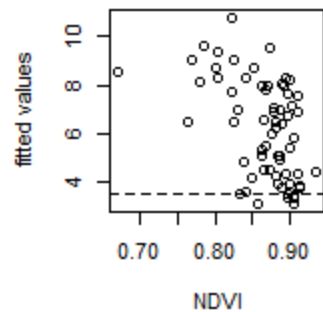
wtm = 17.7



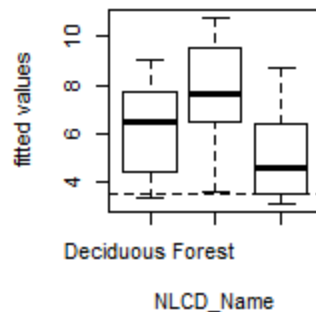
wtm = 1109



wtm = 0.84

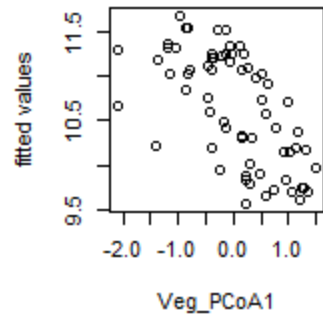


wtm = na

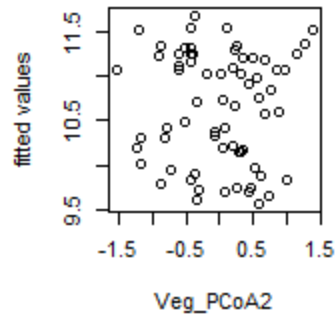


File S5 Figure S7: Forest dataset BRT Fitted values for each environmental variable

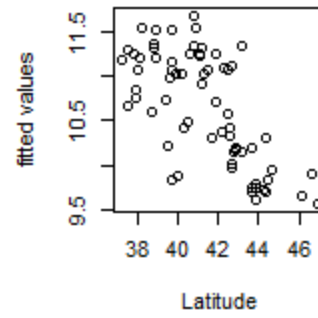
Species\_Observed , wtm = -.4



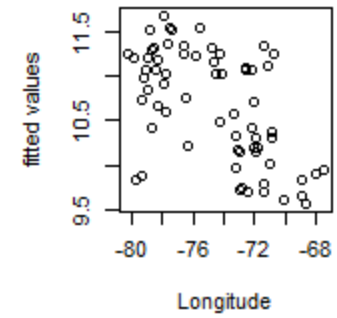
wtm = -0.0086



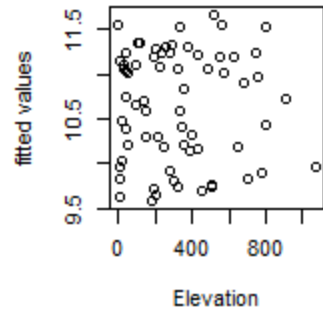
wtm = 41



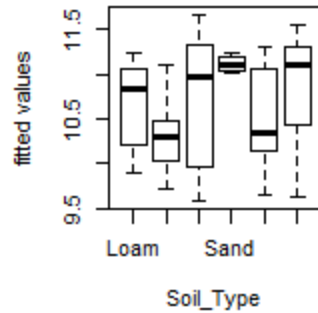
wtm = -.75



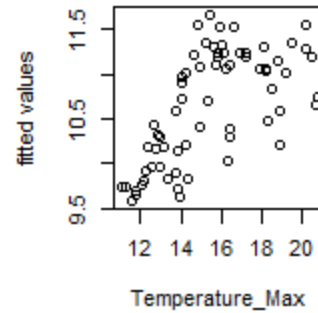
wtm = 322



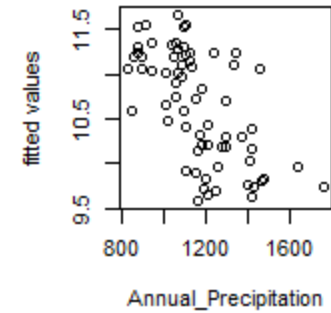
wtm = na



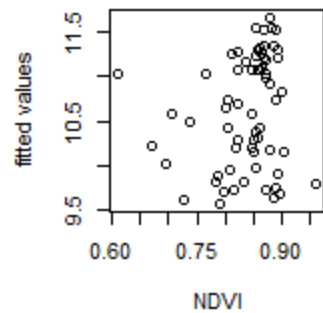
wtm = 15.9



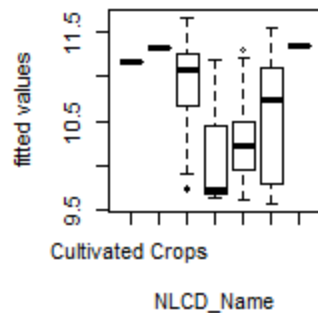
wtm = 1127



wtm = 0.84



wtm = na



File S5 Figure S8: Open dataset BRT Fitted values for each environmental variable