

Supporting Information

Novel Nitrogen-Enriched Oridonin Analogs with Thiazole-Fused A-Ring: Protecting Group-Free Synthesis, Enhanced Anticancer Profile, and Improved Aqueous Solubility

Chunyang Ding,^{†,ξ} Yusong Zhang,^{‡,§,ξ} Haijun Chen,[†] Zhengduo Yang,[§] Christopher Wild,[†] Lili Chu,[§] Huiling Liu,[†] Qiang Shen,^{§,*} and Jia Zhou^{†,*}

[†]Chemical Biology Program, Department of Pharmacology and Toxicology, University of Texas Medical Branch, Galveston, Texas 77555, United States

[‡]Department of Oncology, the Second Affiliated Hospital of Soochow University, Suzhou, Jiangsu, 215004, China

[§]Department of Clinical Cancer Prevention, Division of Cancer Prevention and Population Sciences, The University of Texas M.D. Anderson Cancer Center, Houston, Texas 77030, United States

Table of Contents

Figure 1S. Growth inhibitory effects of adriamycin (ADR) on MCF-7 and ADR-resistant MCF-7 cells	S3
Copies of NMR data	S4-S27

MCF-7/ADR cells were obtained from Michael Zhu (University of Texas, Houston Health Science Center, Houston, TX, 77030). The resistance was maintained by exposure cells to 10 μM of adriamycin for 48 h every 8 weeks. As shown in **Figure 1S**, adriamycin dose-dependently suppressed the growth of MCF-7 cells at the concentrations from 0.1 to 20 μM ; on the contrary, it displayed no growth inhibitory activity against MCF-7/ADR cells at the same concentrations, These results demonstrated that MCF/ADR cell is adriamycin-resiatant.

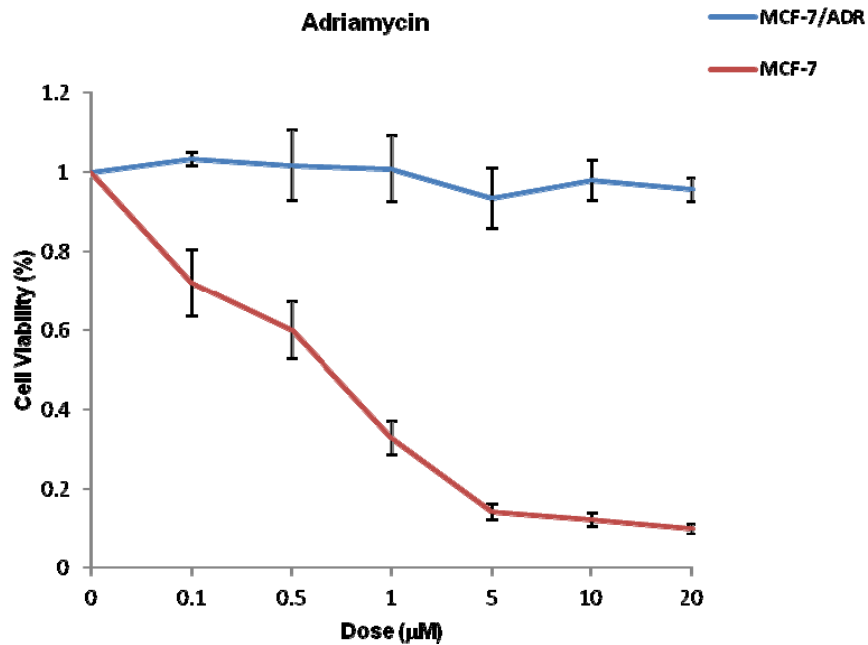
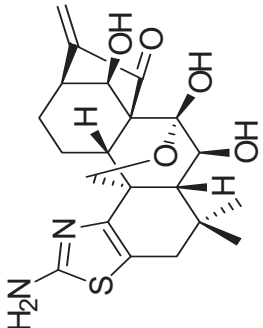
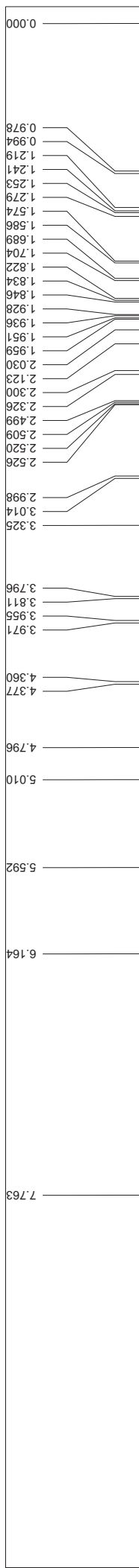
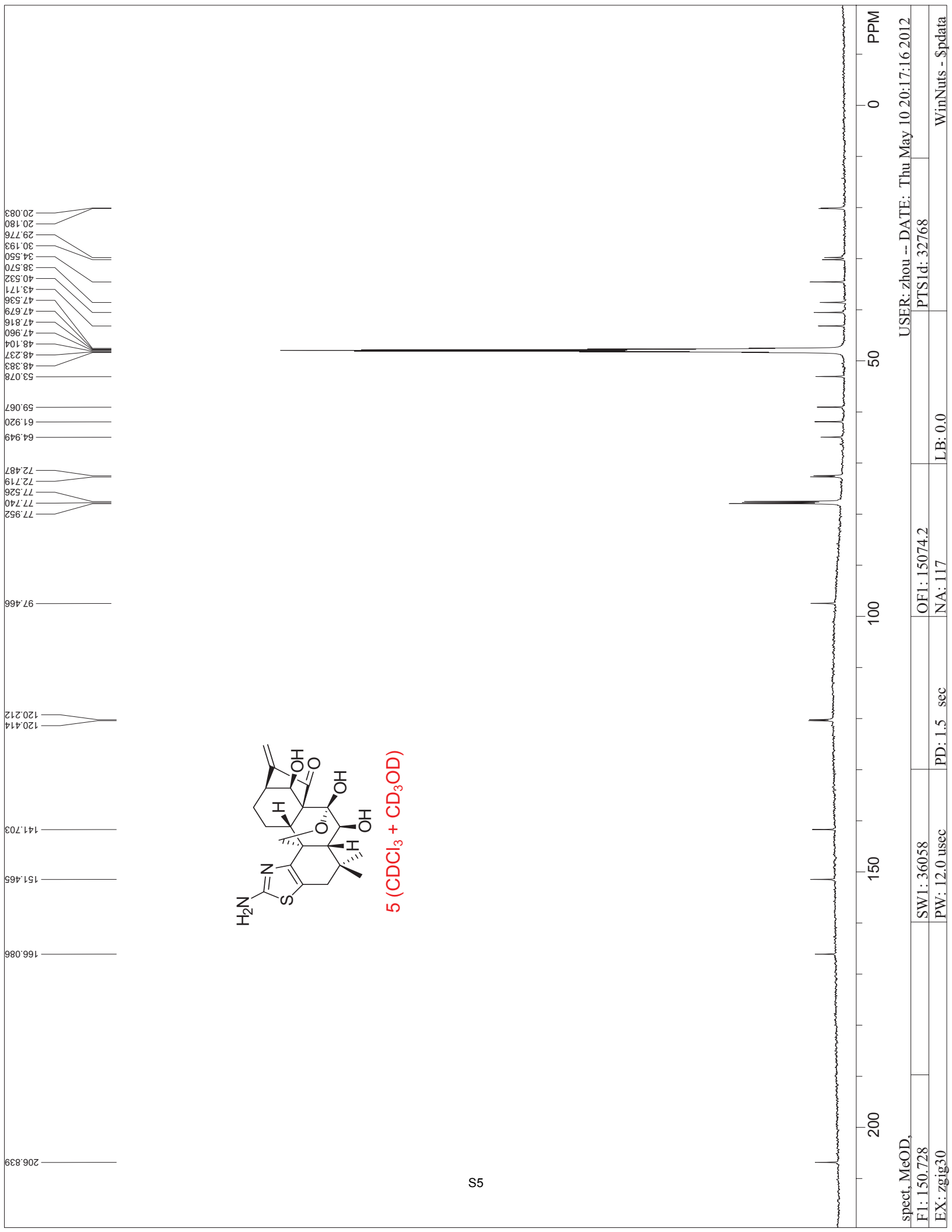


Figure 1S. Growth inhibitory effects of adriamycin on MCF-7 and MCF-7/ADR cells. These cells were treated with varying concentrations of adriamycin for 48 h. Values are mean \pm SE of three independent experiments. Statistical significance was determined using Student's t-test.

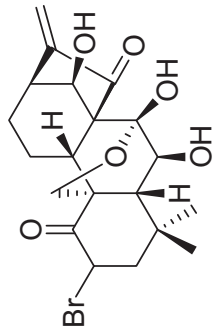
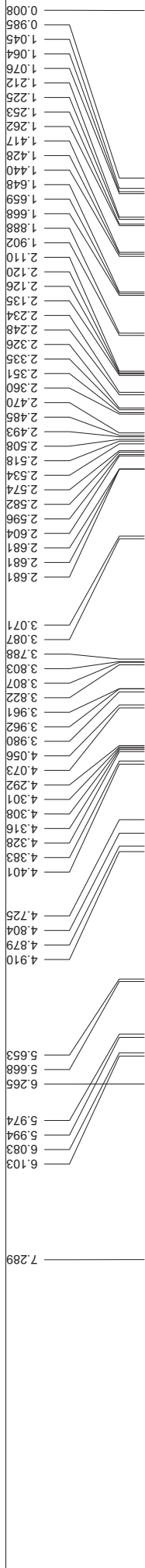


5 (CDCl₃ + CD₃OD)

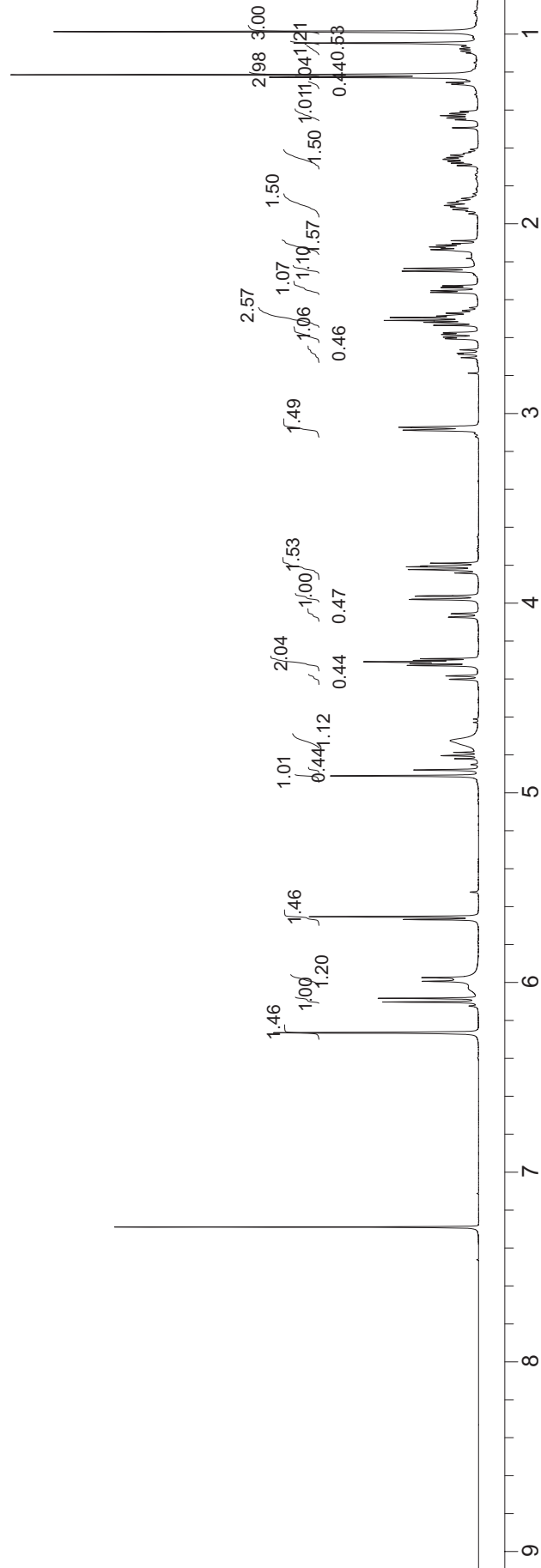
S4

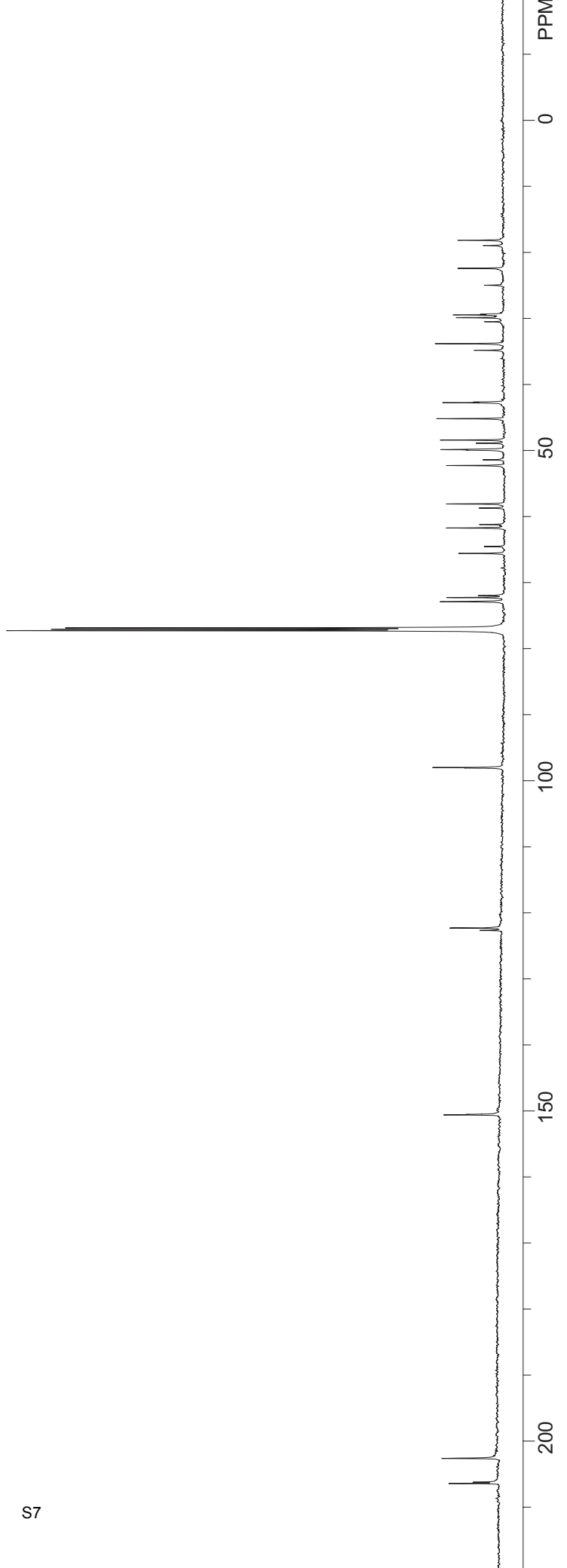
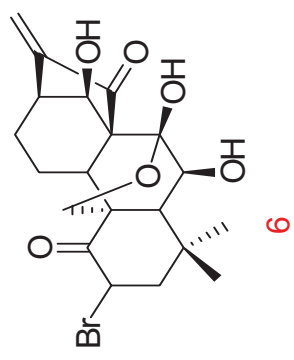
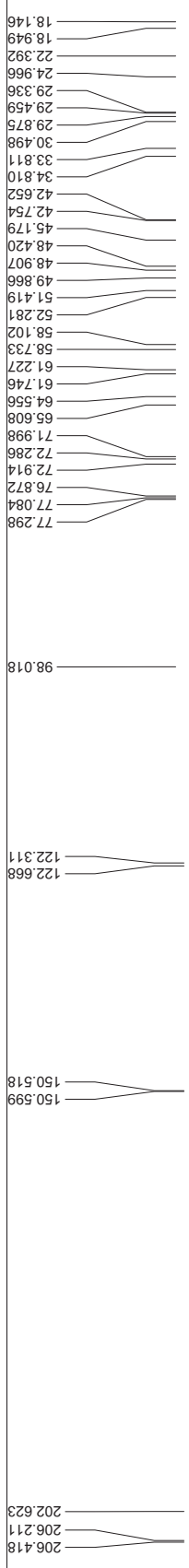


spect, MeOD, USER: zhou -- DATE: Thu May 10 20:17:16 2012
 F1: 150.728 OF1: 15074.2 PTS1d: 32768
 EX: zgig30 PD: 1.5 sec NA: 117 LB: 0.0 WinNuts - \$pdata

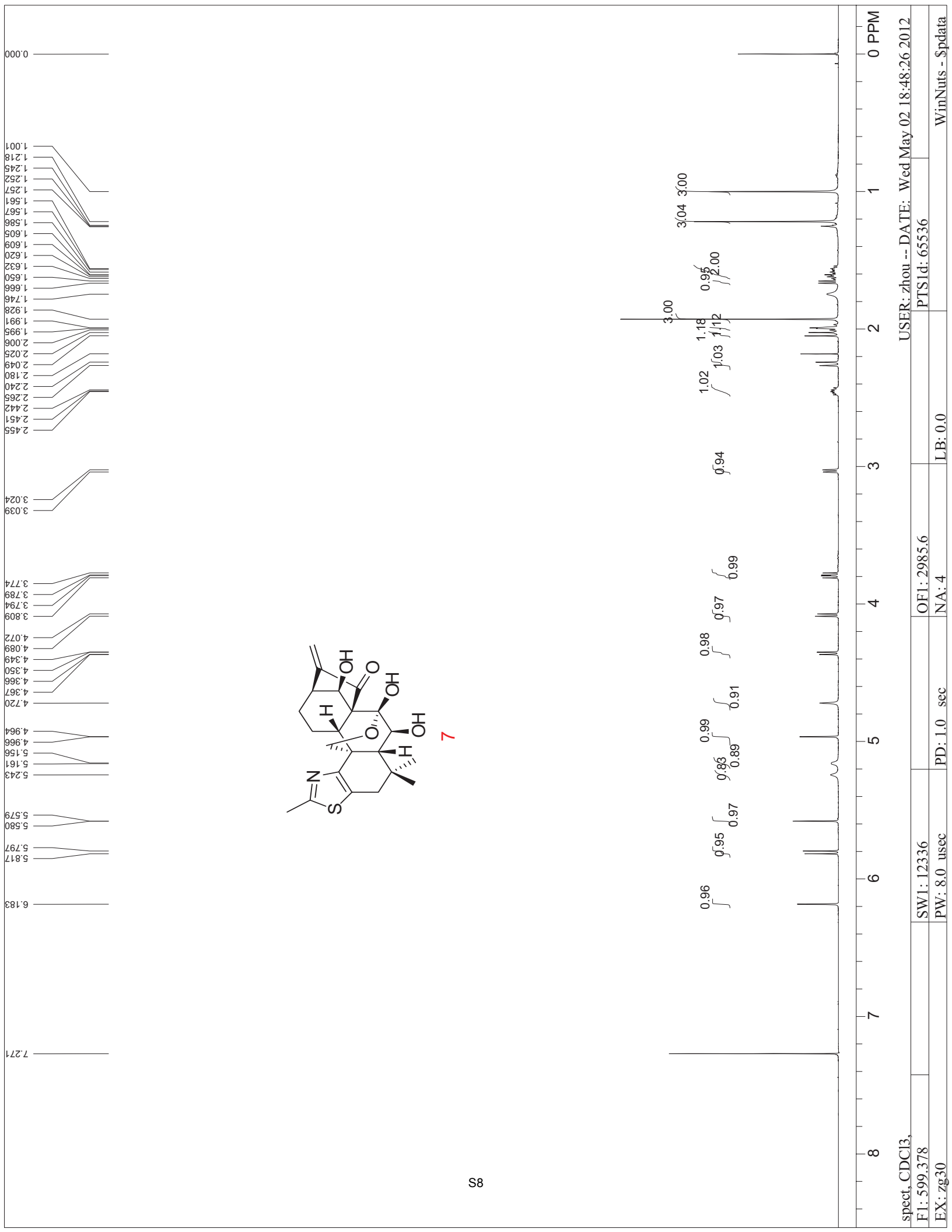


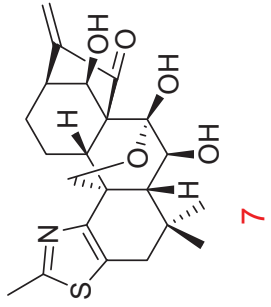
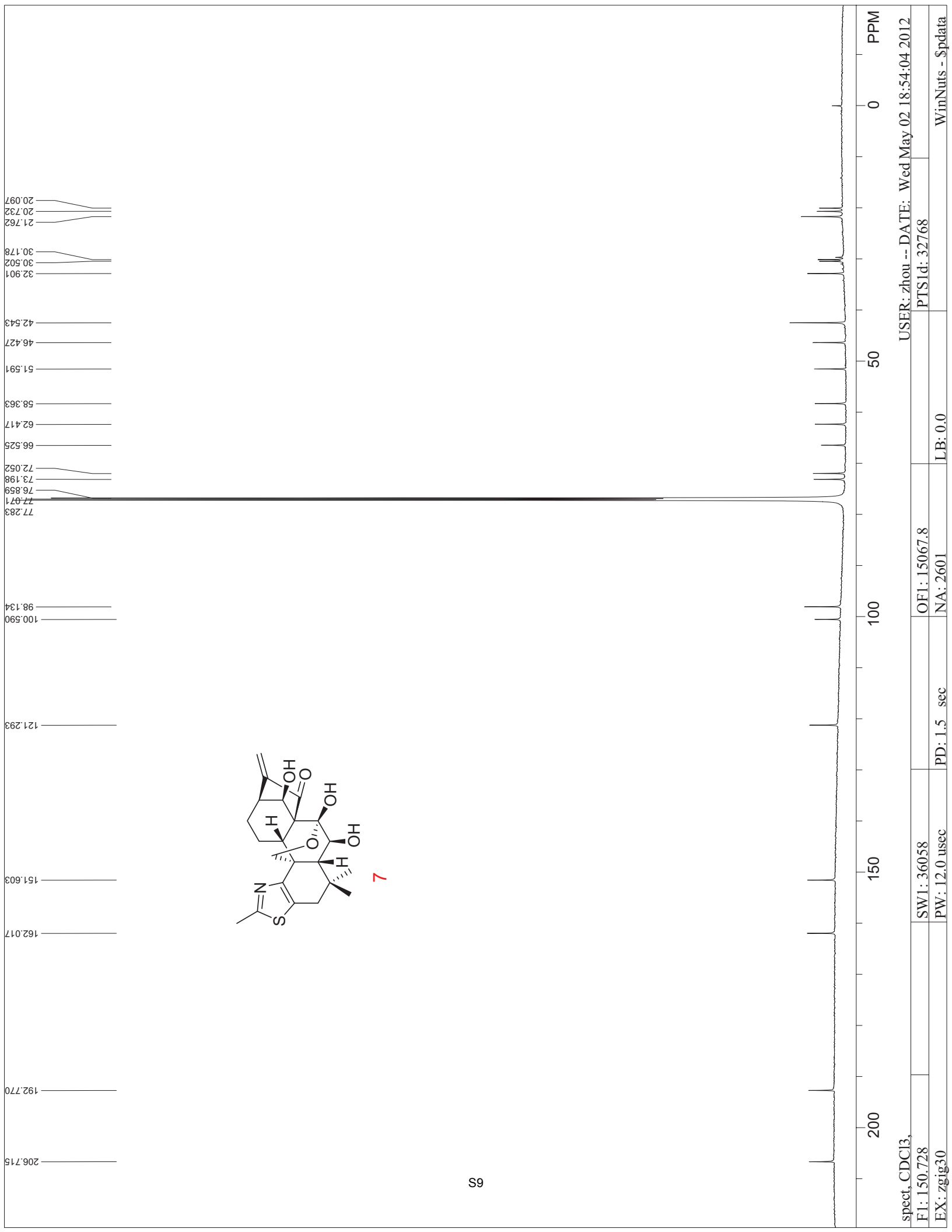
6



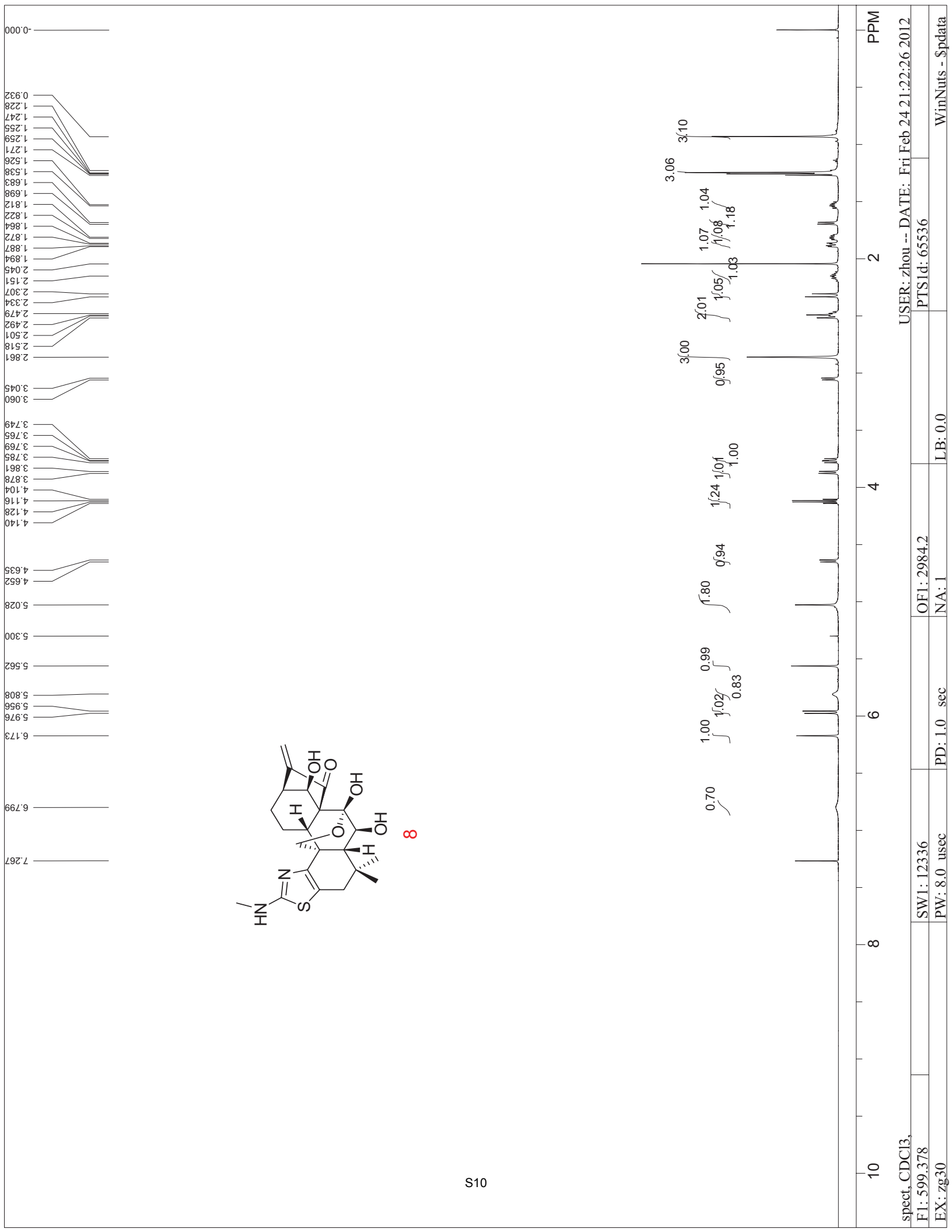


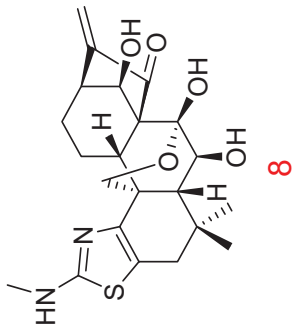
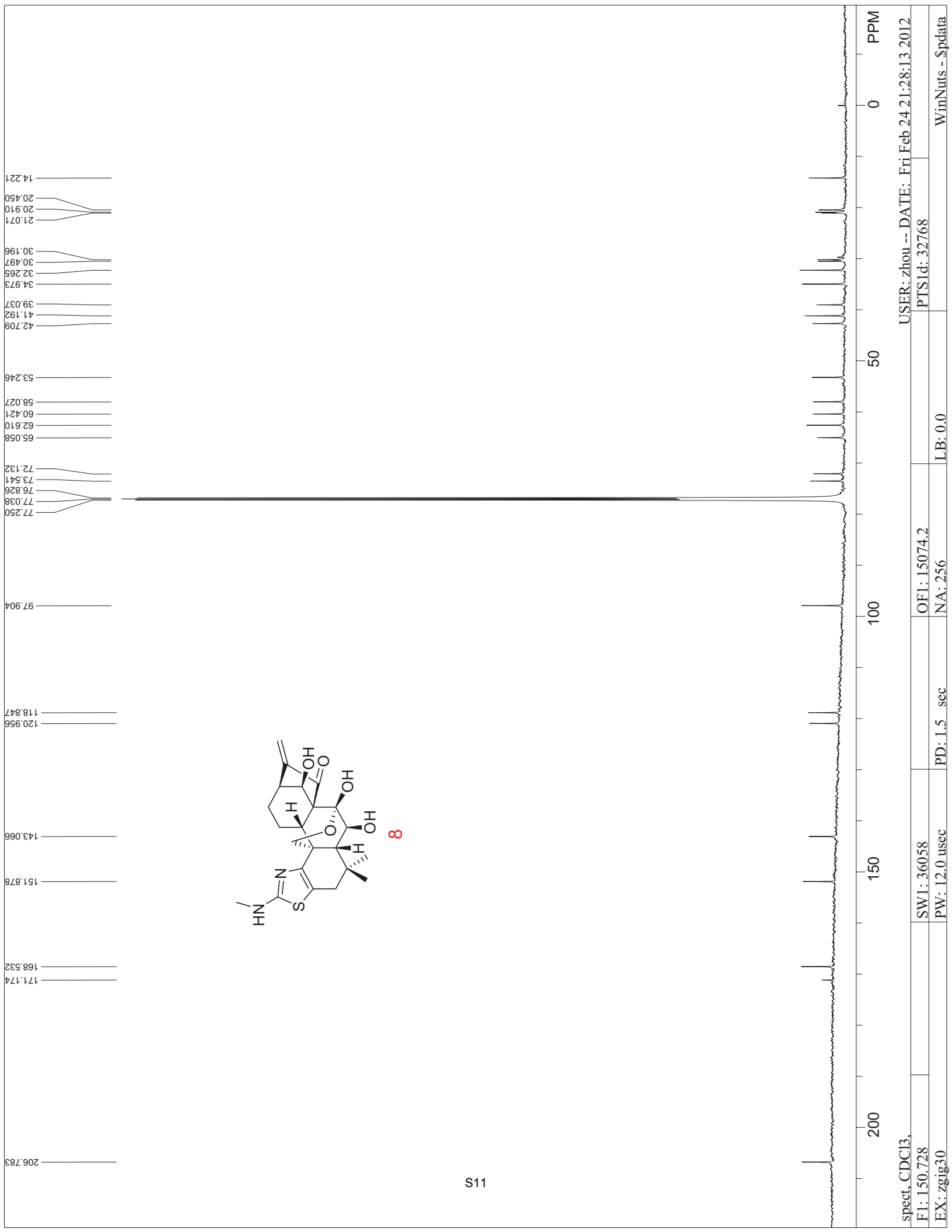
spect, CDCI3, USER: zhou -- DATE: Thu Jun 28 20:42:34 2012
 F1: 150.728 OF1: 15074.2 PTS1d: 32768
 EX: zgig30 PD: 1.5 sec NA: 129 LB: 0.0 WinNuts - \$pdata

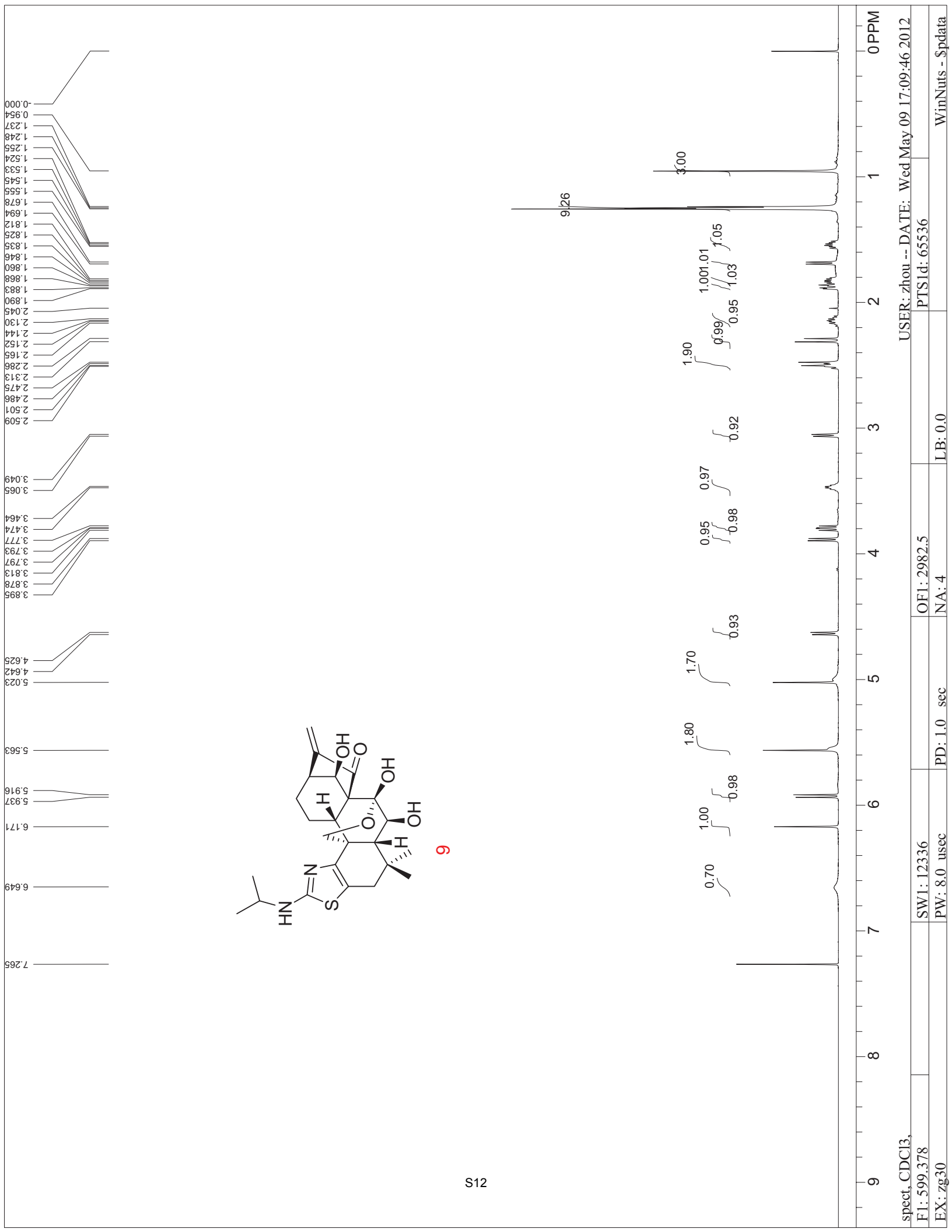


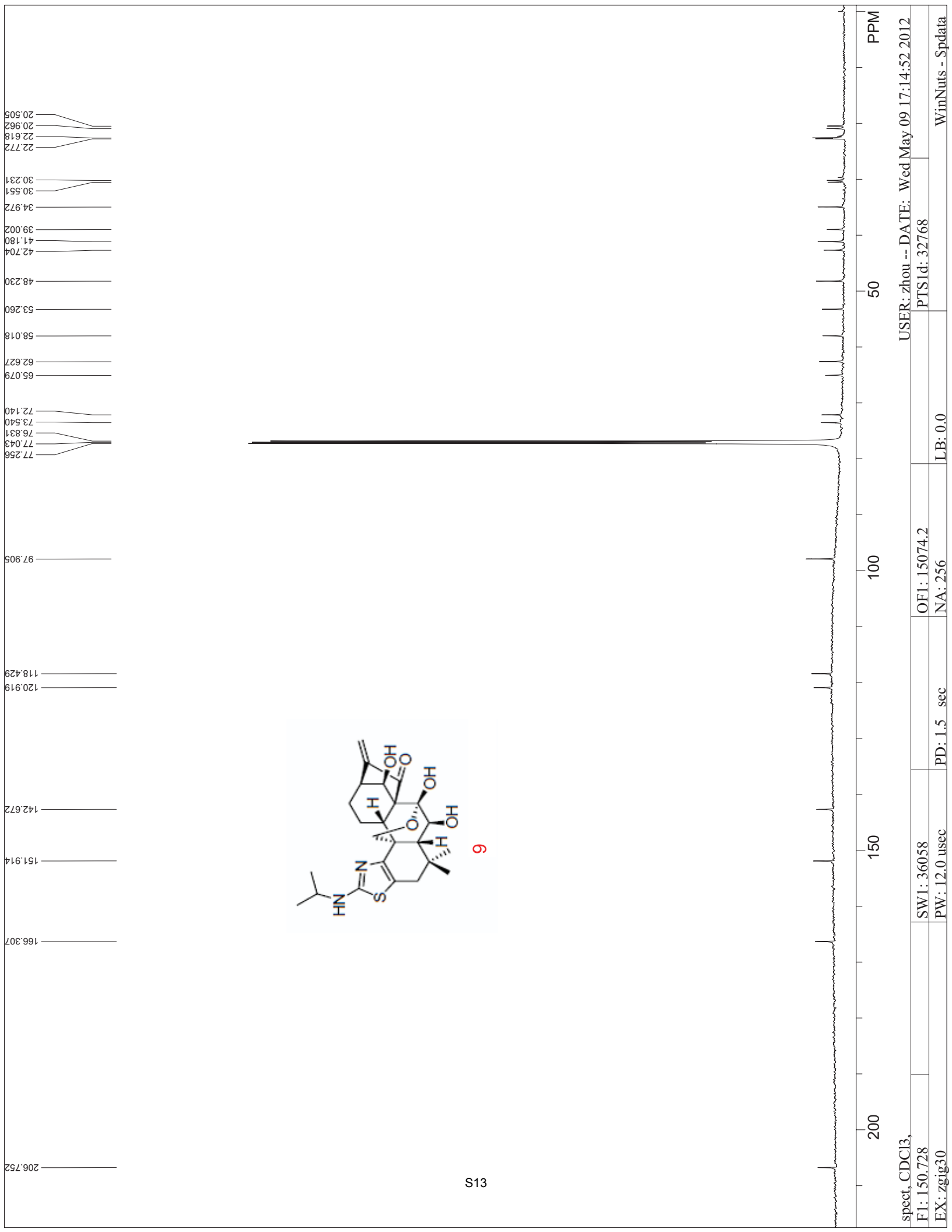


spect, CDCl3, USER: zhou -- DATE: Wed May 02 18:54:04 2012
 F1: 150.728 OF1: 15067.8 PTS1d: 32768
 EX: zgig30 PD: 1.5 sec NA: 2601 LB: 0.0 WinNuts - \$pdata









USER: zhou -- DATE: Wed May 09 17:14:52 2012

PTSId: 32768

OF1: 15074.2

NA: 256

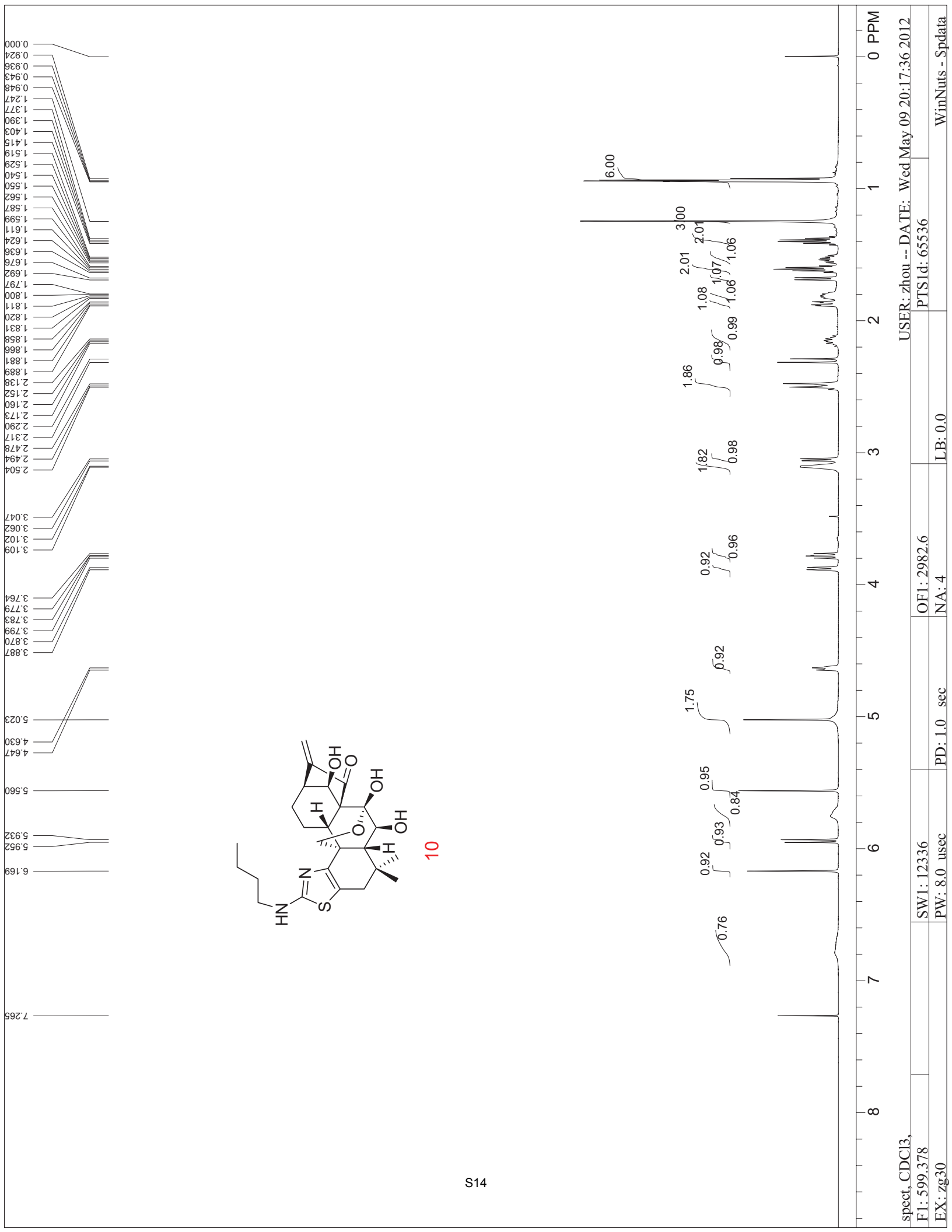
PD: 1.5 sec

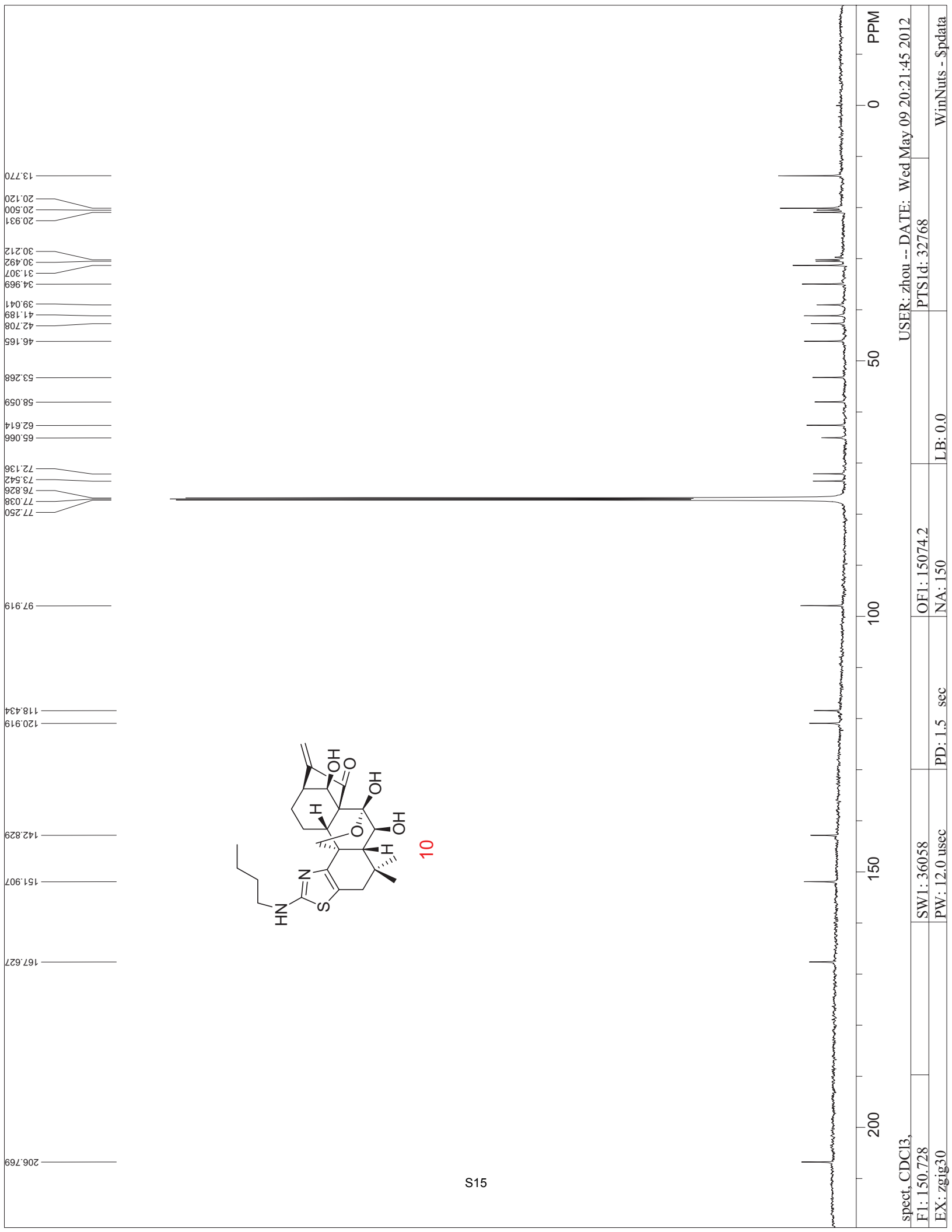
SW1: 36058

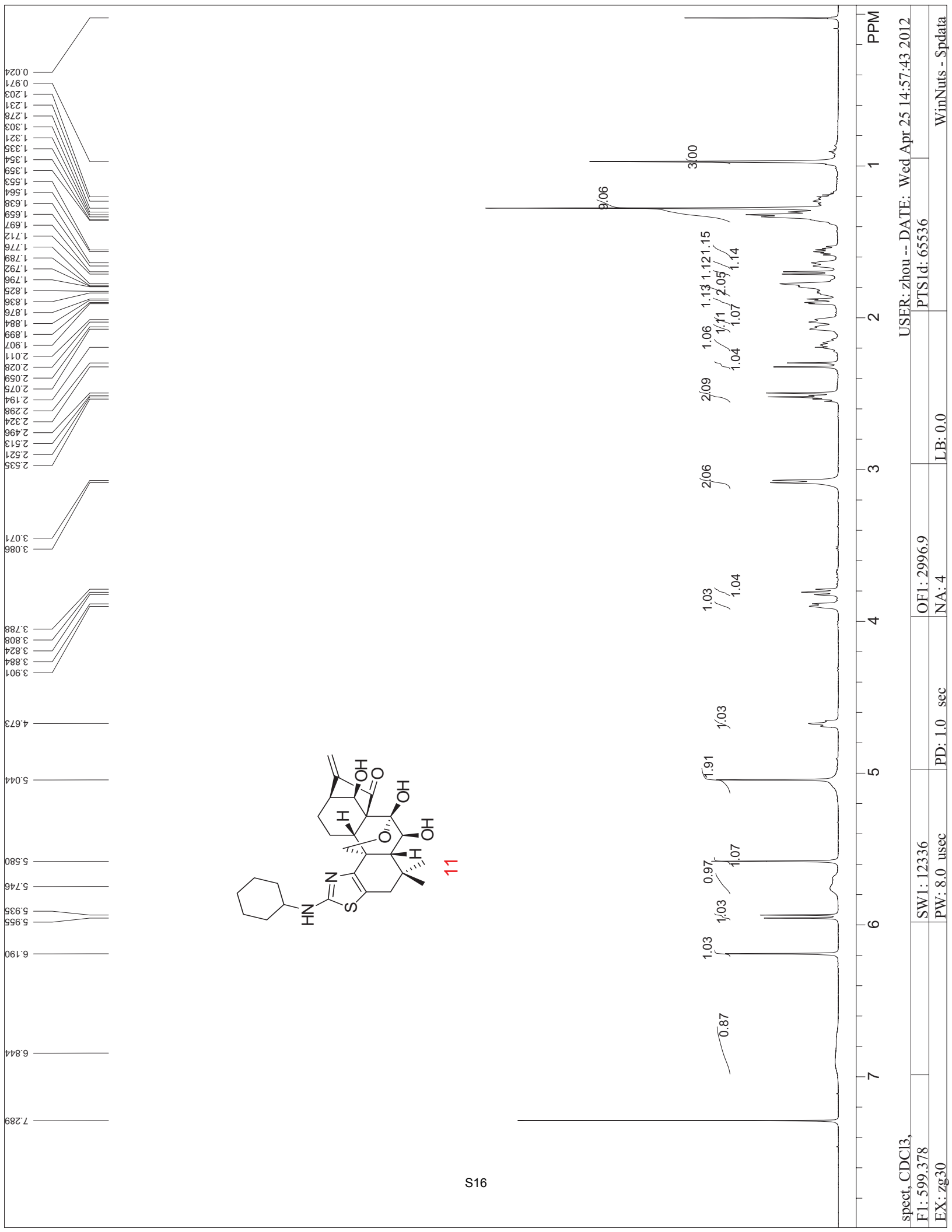
PW: 12.0 usec

WinNuts - \$pdata

LB: 0.0

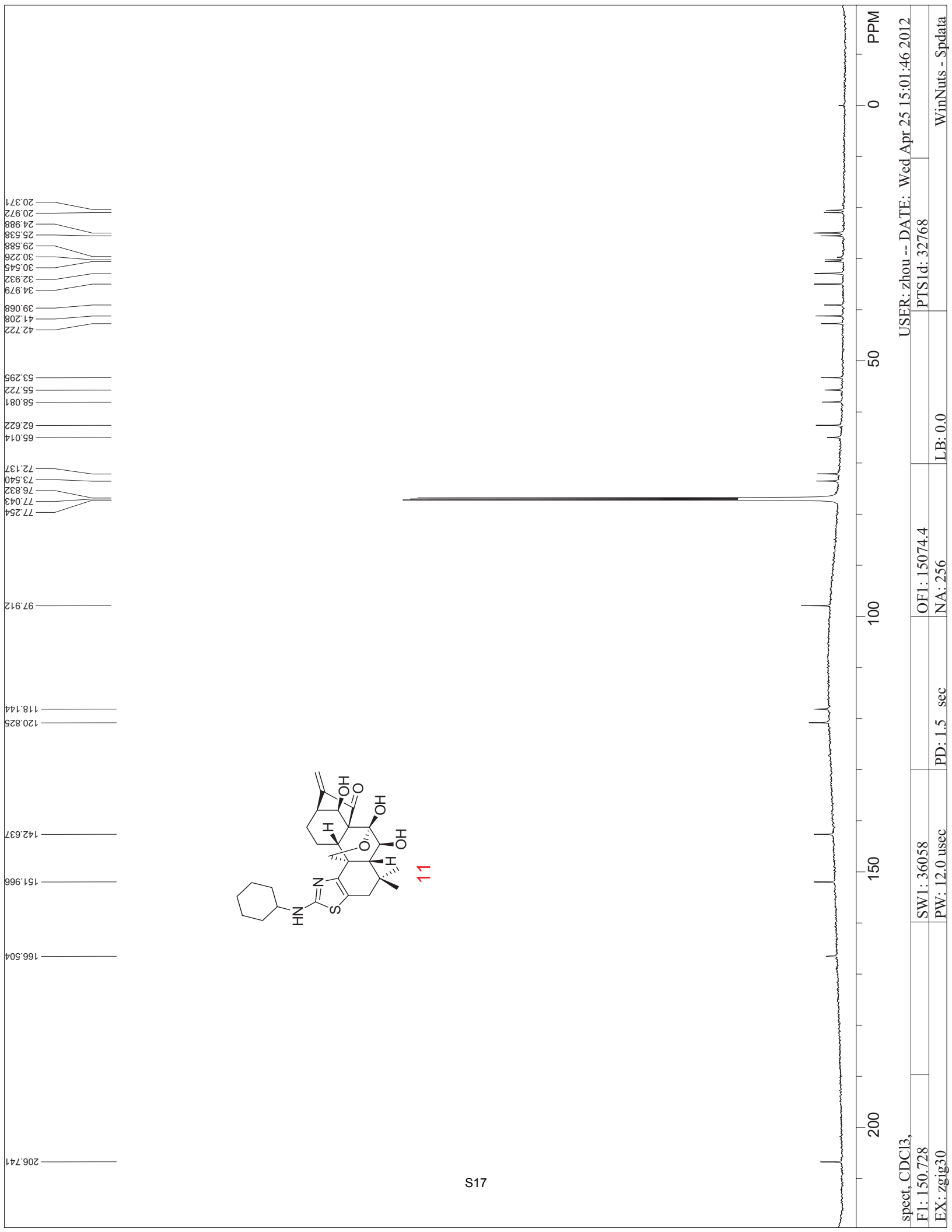




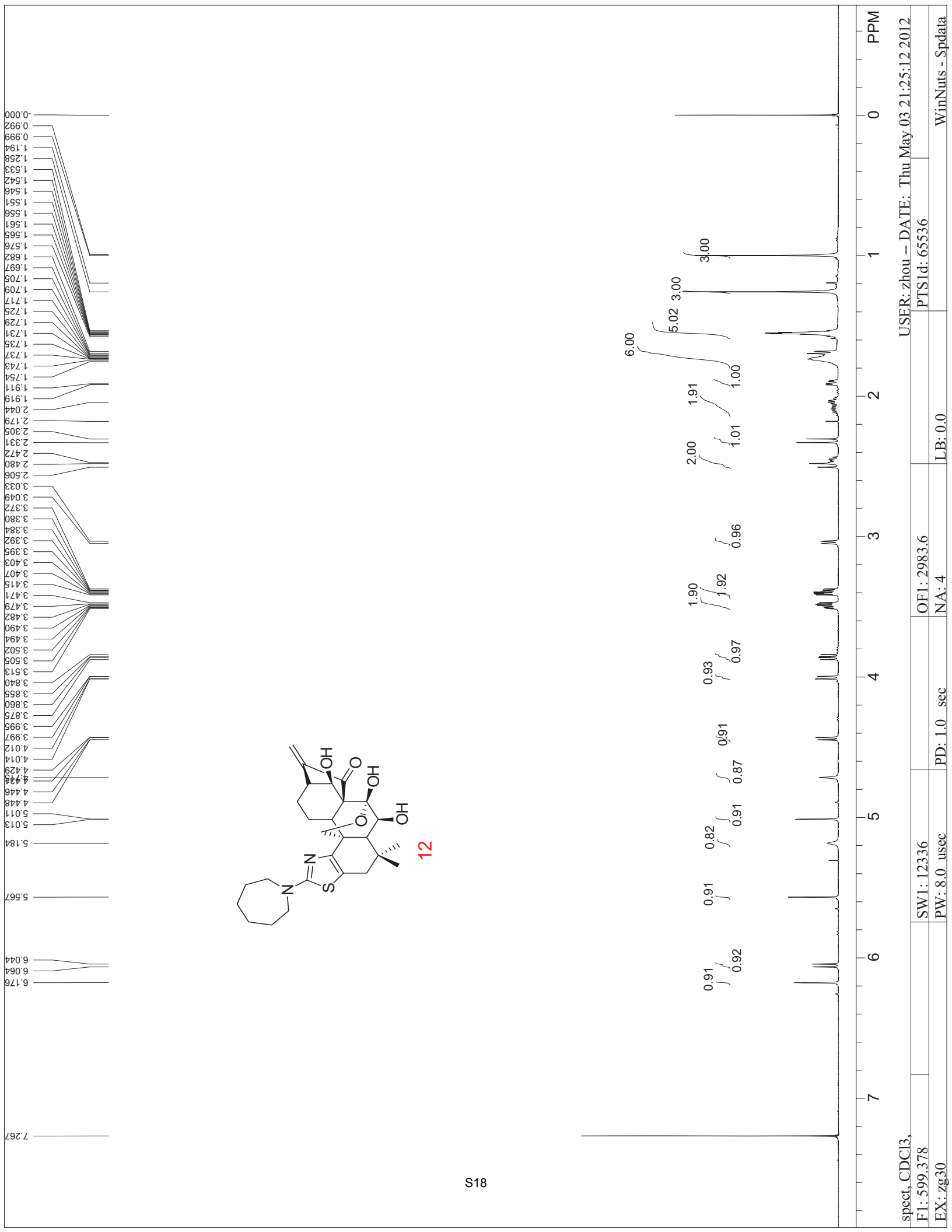


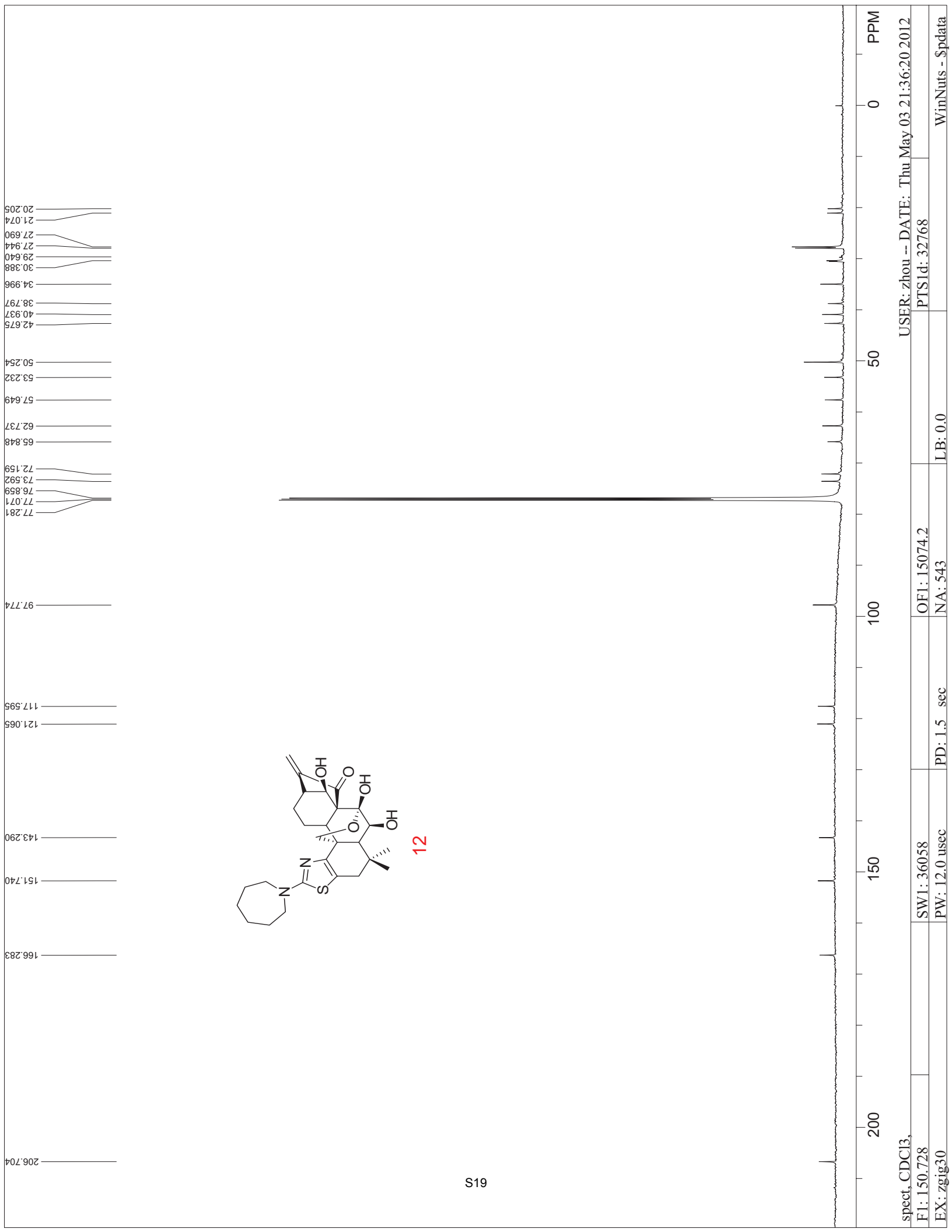
11

spect, CDCl3, USER: zhou -- DATE: Wed Apr 25 14:57:43 2012
 F1: 599.378 OF1: 2996.9 PTS1d: 65536
 EX: zg30 PD: 1.0 sec LB: 0.0 WinNuts - \$pdata

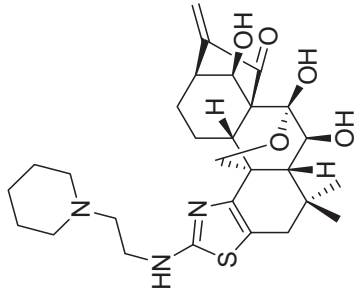
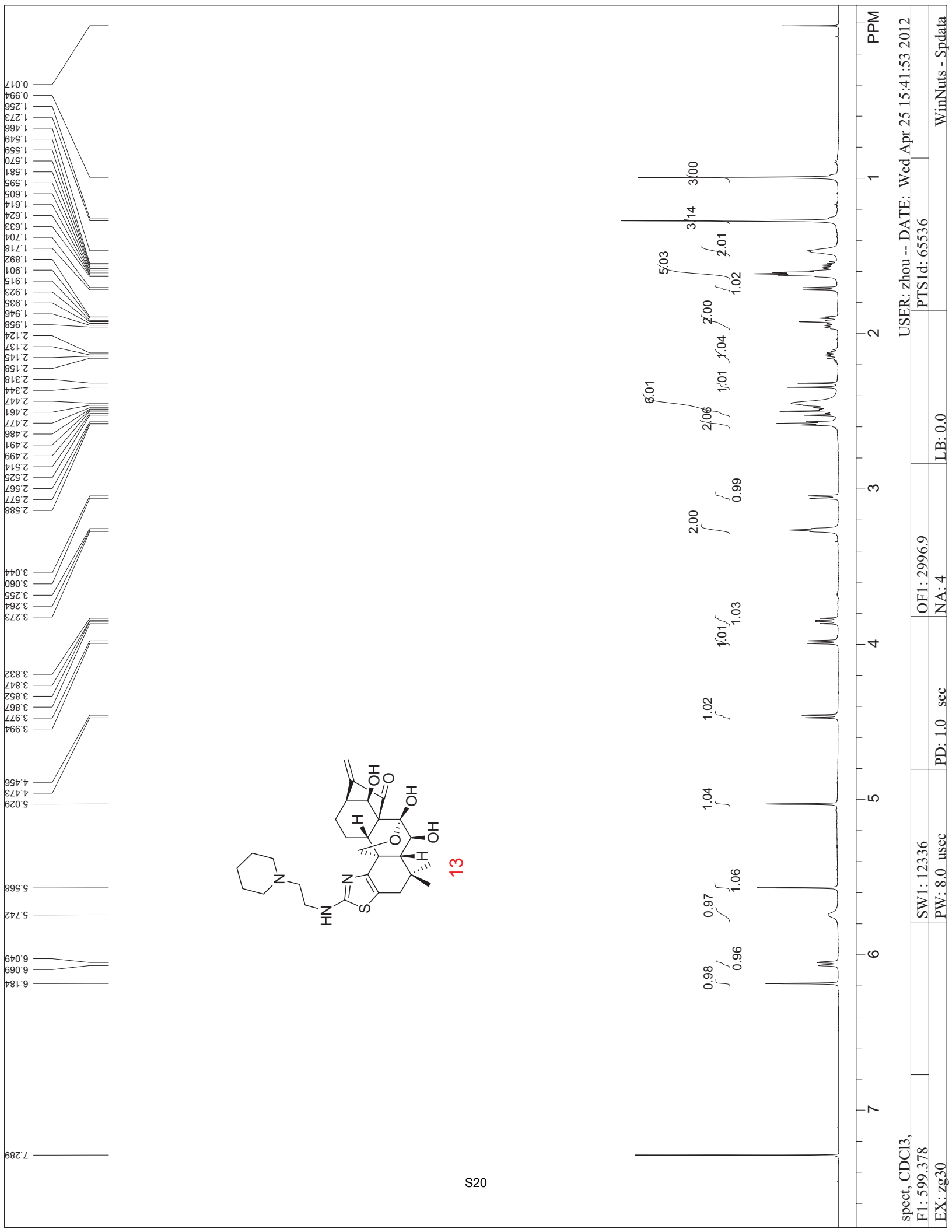


spect, CDC13, USER: zhou -- DATE: Wed Apr 25 15:01:46 2012
 F1: 150.728 OF1: 15074.4 PTS1d: 32768
 EX: zgig30 PD: 1.5 sec NA: 256 LB: 0.0
 WinNuts - \$pdata

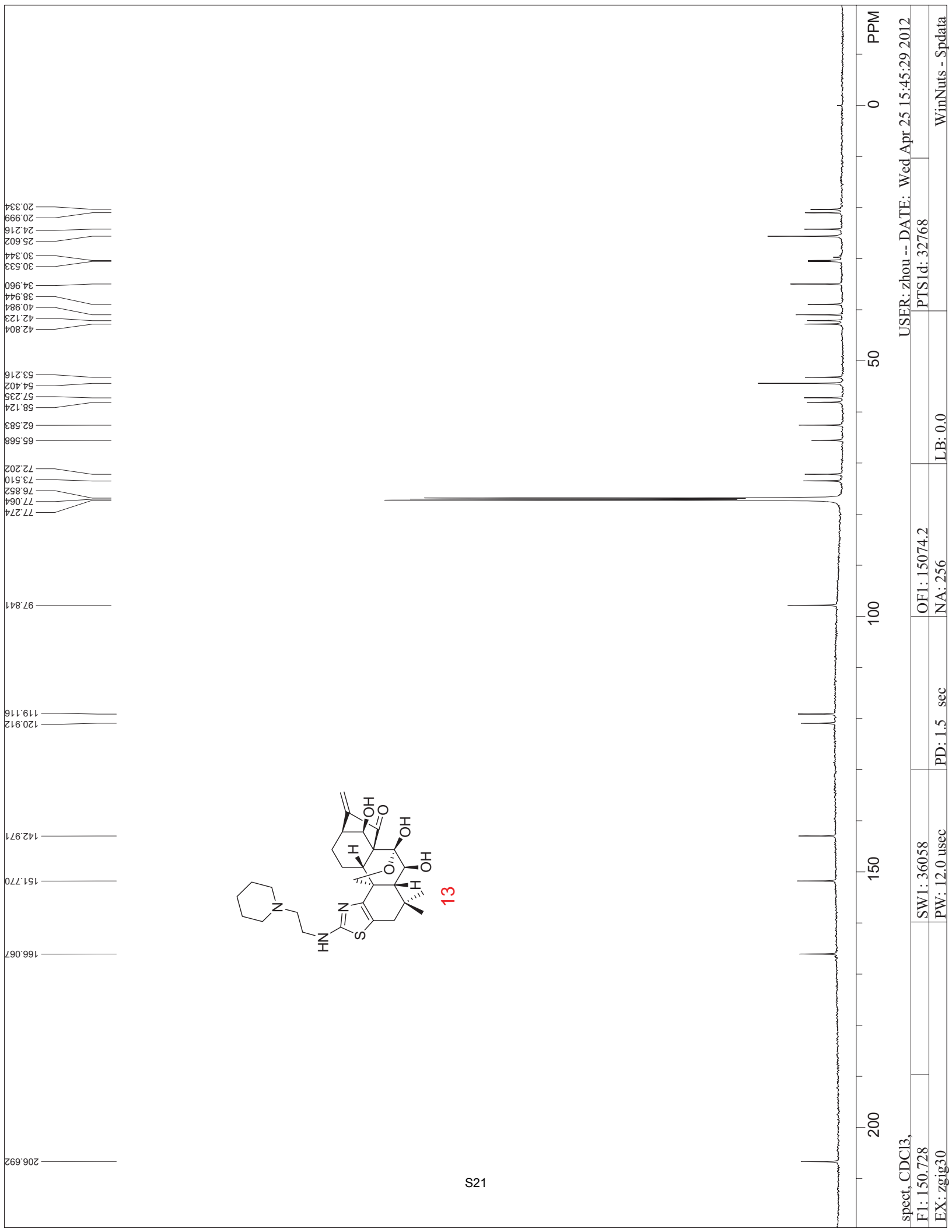




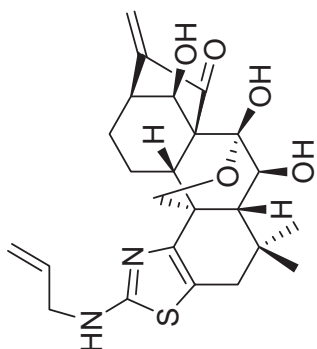
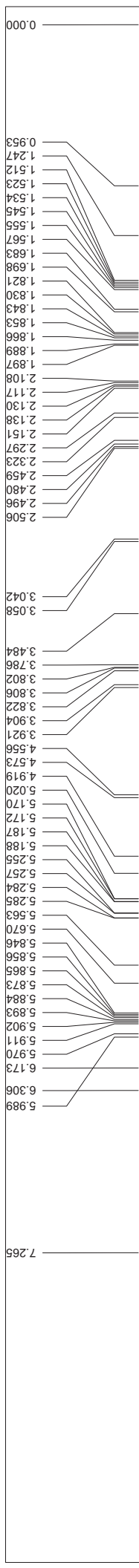
spect, CDCI3, USER: zhou -- DATE: Thu May 03 21:36:20 2012
 F1: 150.728 PTS1d: 32768
 EX: zgig30 LB: 0.0
 OF1: 15074.2
 NA: 543
 PD: 1.5 sec
 SW1: 36058
 PW: 12.0 usec
 WinNuts - \$pdata



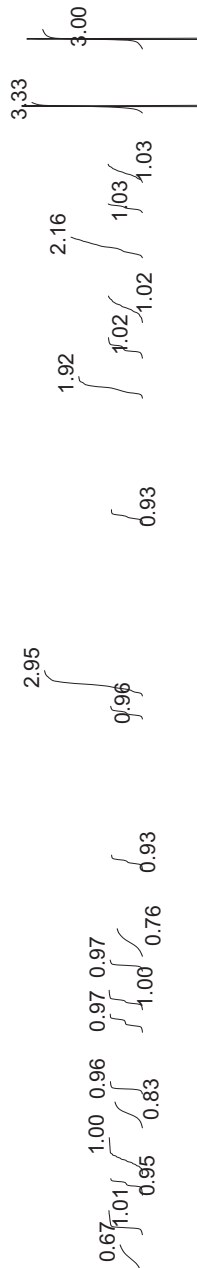
13

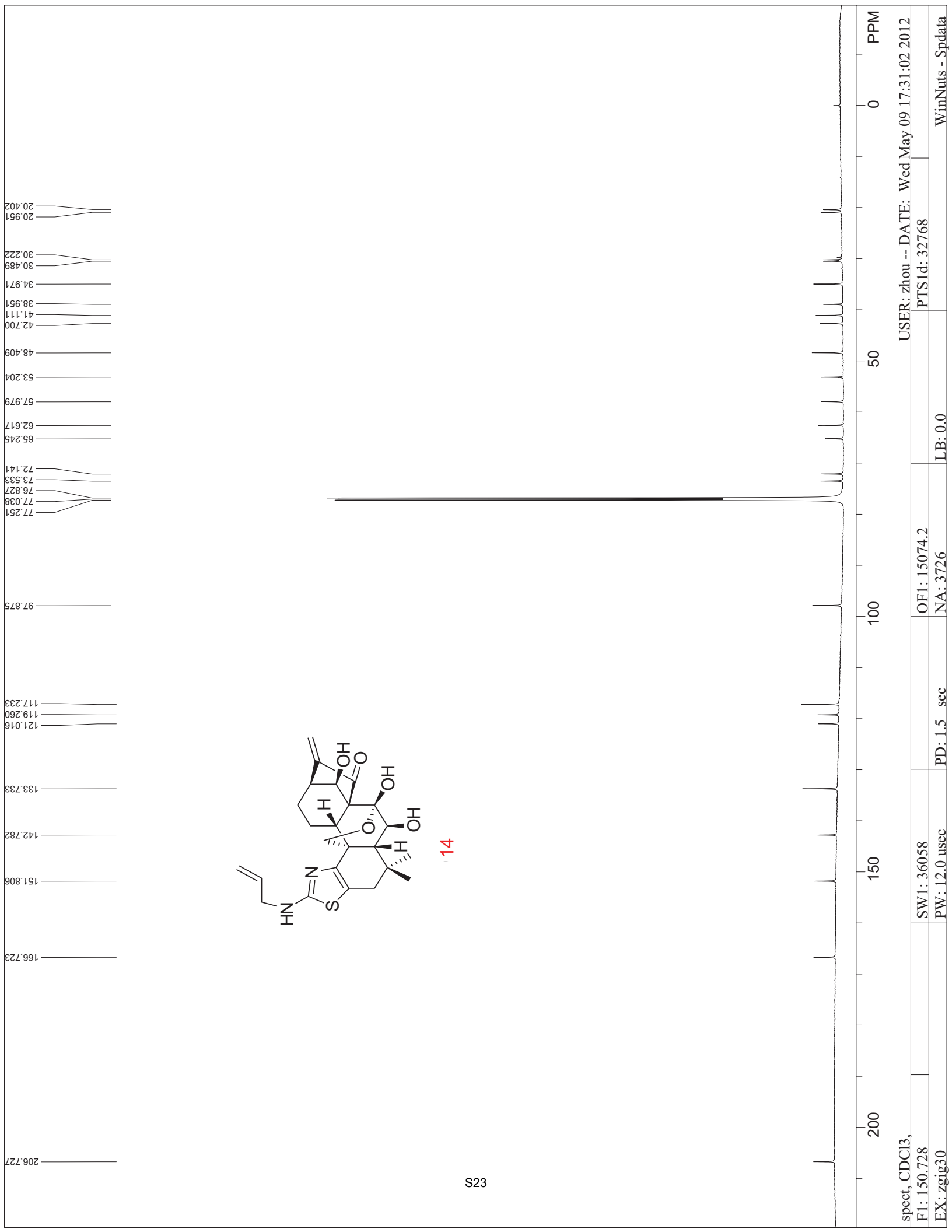


spect, CDC13, USER: zhou -- DATE: Wed Apr 25 15:45:29 2012
 F1: 150.728 PTS1d: 32768
 EX: zgig30 LB: 0.0 OF1: 15074.2 NA: 256
 PD: 1.5 sec
 WinNuts - \$pdata

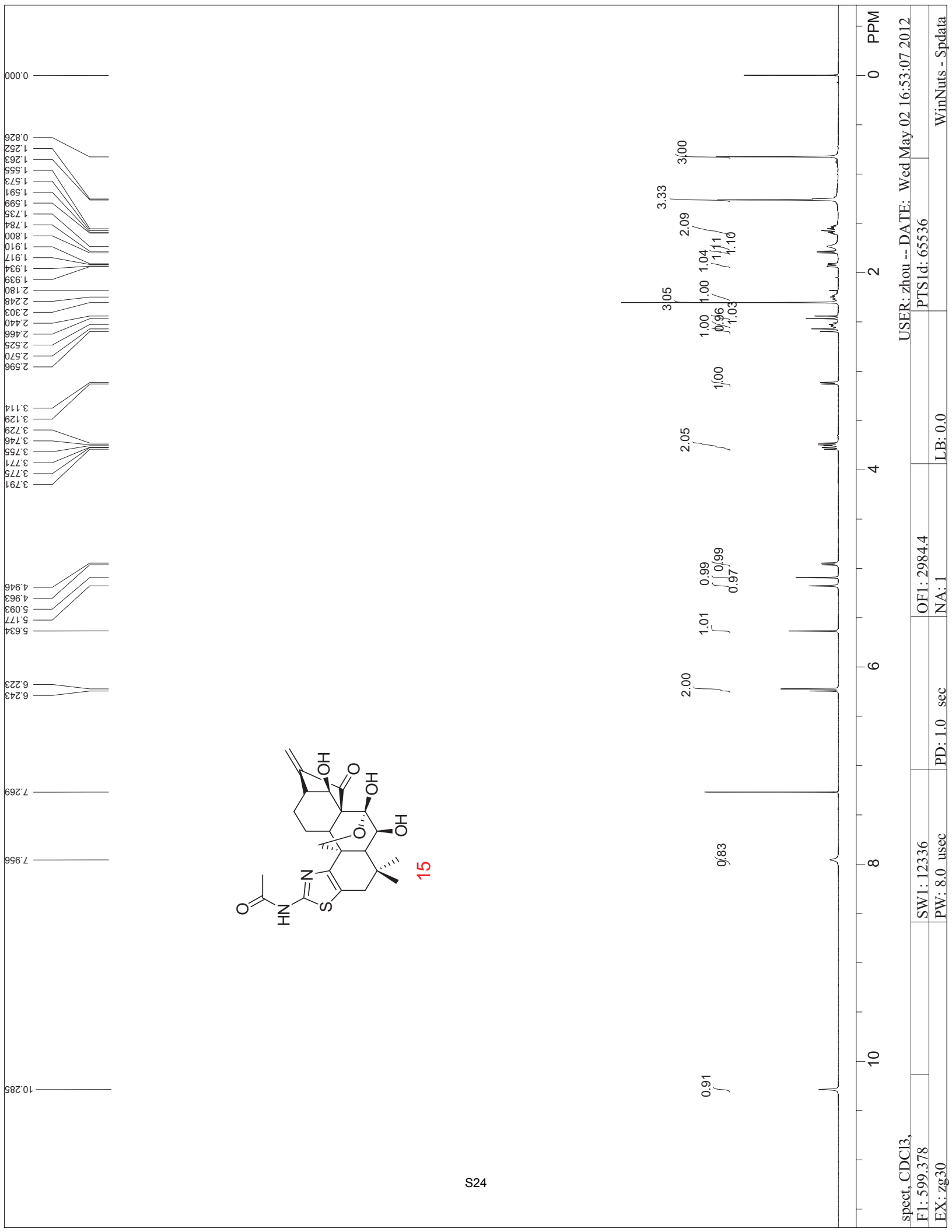


14

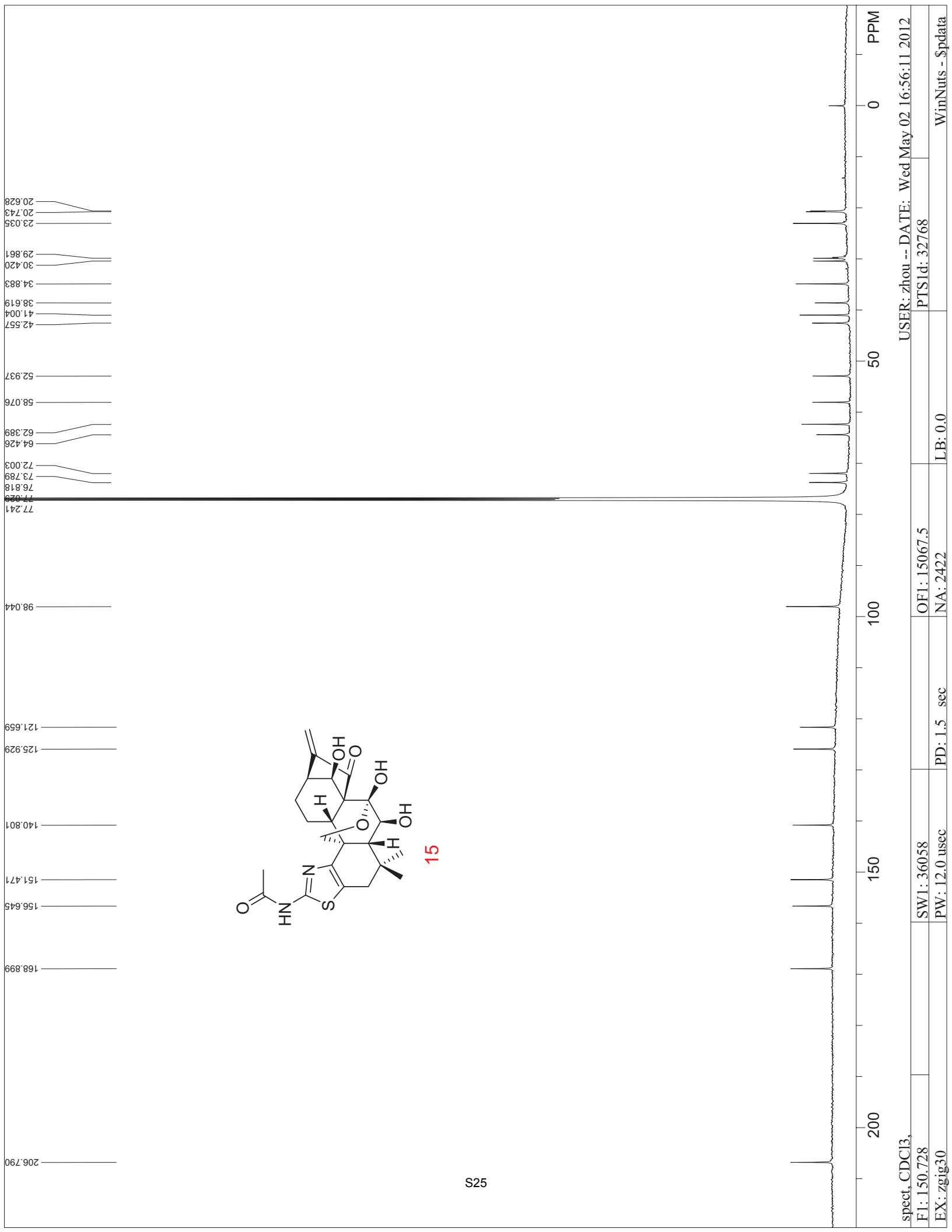




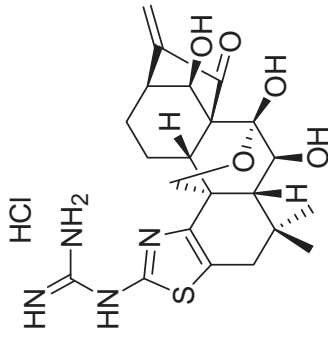
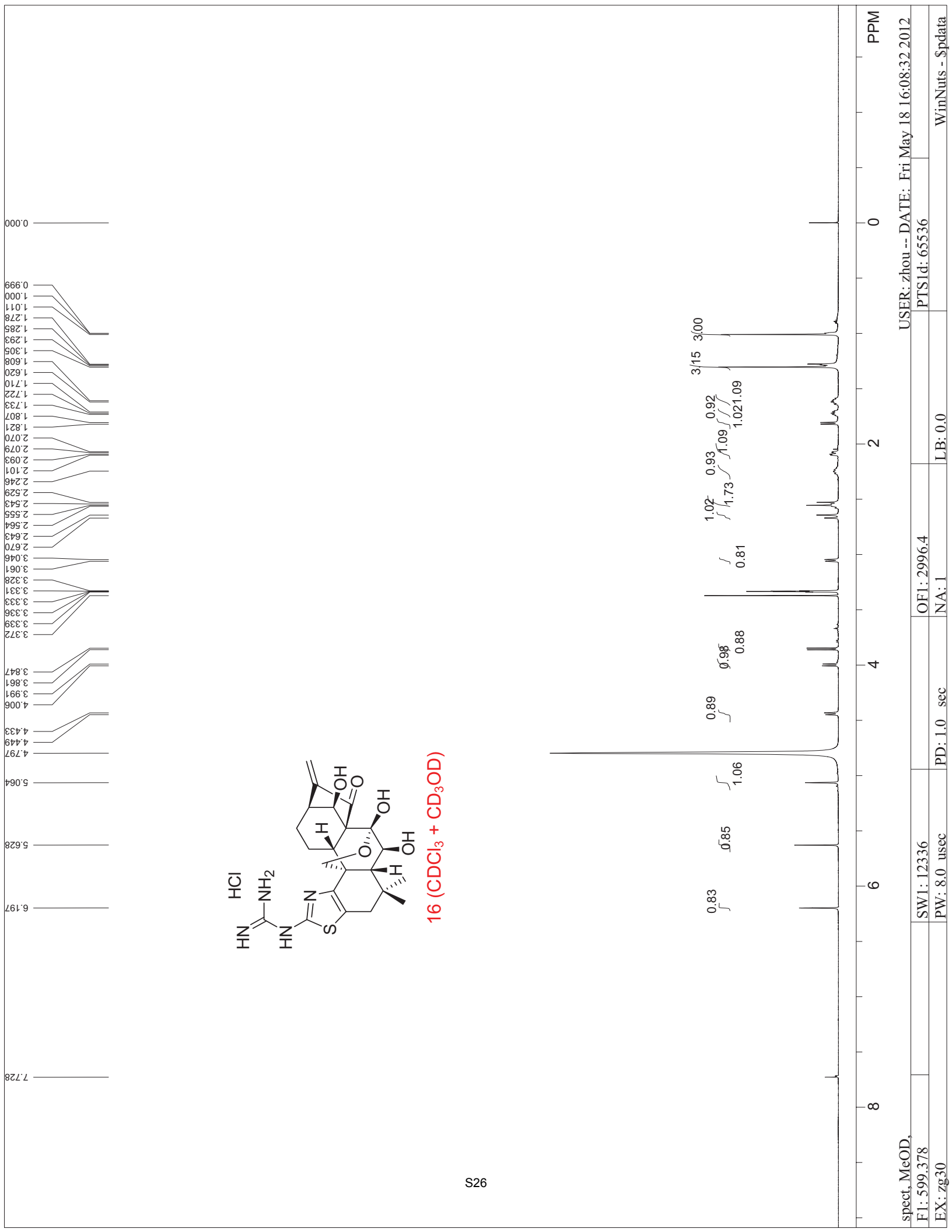
spect, CDCI3, USER: zhou -- DATE: Wed May 09 17:31:02 2012
 F1: 150.728 OF1: 15074.2 PTS1d: 32768
 EX: zgig30 PW: 12.0 usec PD: 1.5 sec NA: 3726 LB: 0.0
 WinNuts - \$pdata



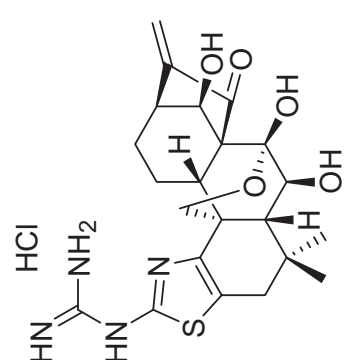
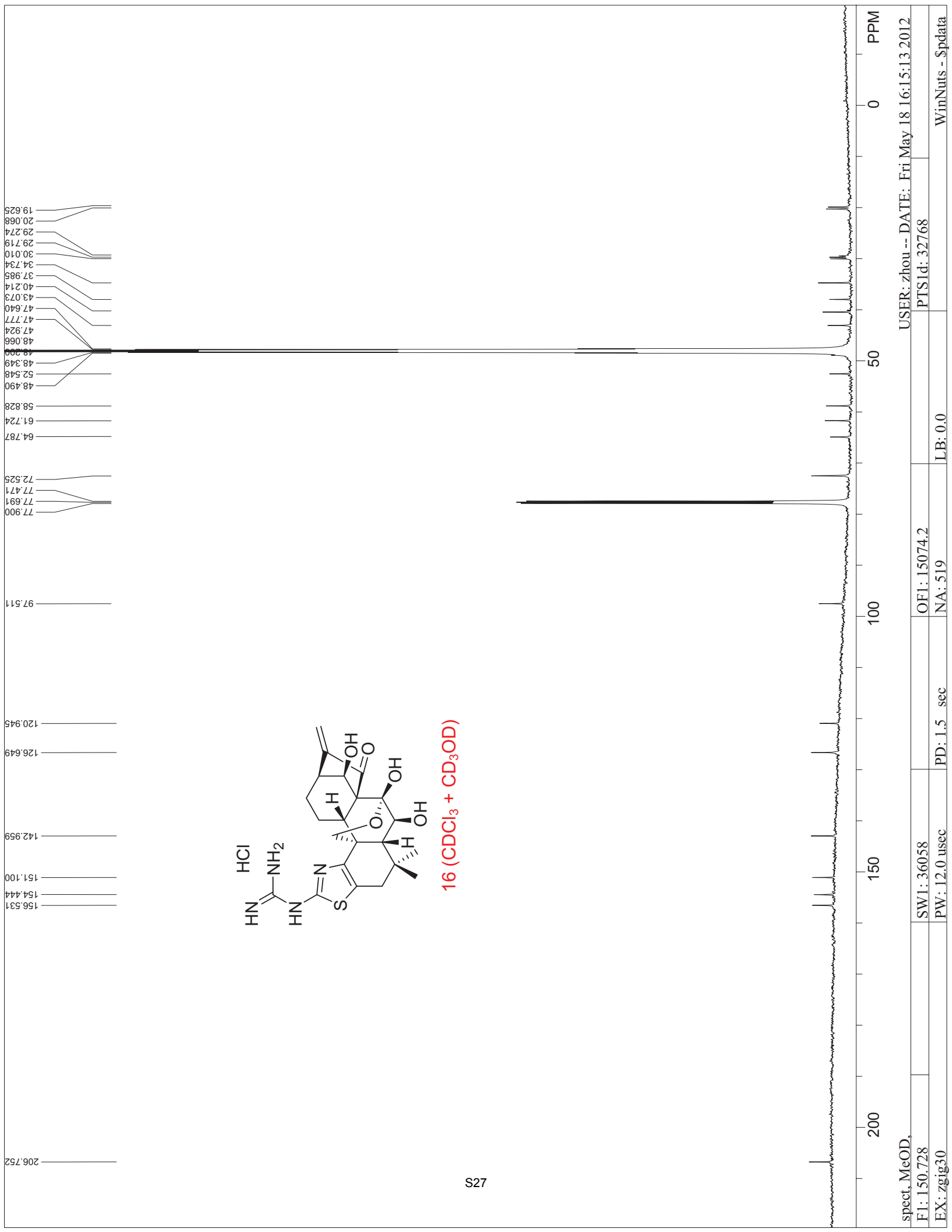
spectr_CDCI3, USER: zhou -- DATE: Wed May 02 16:53:07 2012
 F1: 599.378 SW1: 12336 OF1: 2984.4 PTS1d: 65536
 EX: zg30 PW: 8.0 usec PD: 1.0 sec NA: 1 LB: 0.0 WinNuts - \$pdata



spect, CDCI3, USER: zhou -- DATE: Wed May 02 16:56:11 2012
 F1: 150.728 OF1: 15067.5 PTS1d: 32768
 EX: zgig30 PW: 12.0 usec PD: 1.5 sec NA: 2422 LB: 0.0
 WinNuts - \$pdata



16 (CDCl₃ + CD₃OD)



16 (CDCl₃ + CD₃OD)