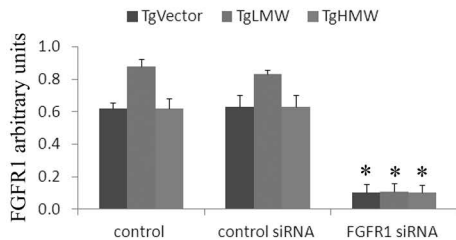
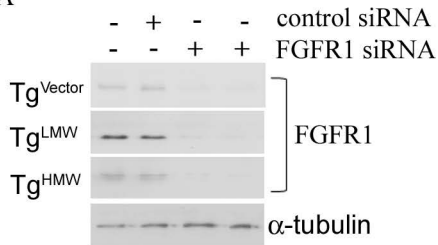


**Supplemental Figure 1**

Depletion of FGFR1 (A) and FGFR2 (B) expression by siRNA in COBs from Tg<sub>vector</sub>, Tg<sub>LMW</sub> and Tg<sub>HMW</sub> mice. Cells were transfected with FGFR1 siRNA or control siRNA and the level of FGFR1 and FGFR2 protein were analyzed by Western blotting. Filters were stripped and re-probed with a mouse anti- $\alpha$ -tubulin to show equal amount of loading. Graphic represent results of three independent experiments. Values were the means  $\pm$  standard deviation (S.D.) and statistically analyzed with T test; \*p<0.01

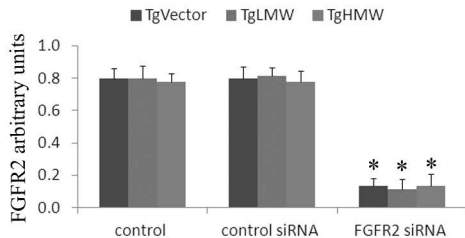
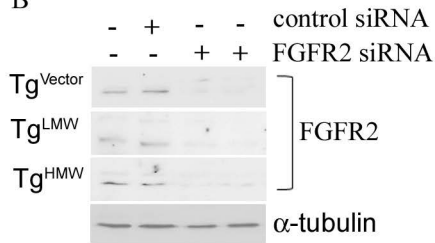
# Supplemental Figure 1

A



\*p<0.01

B



\*p<0.01