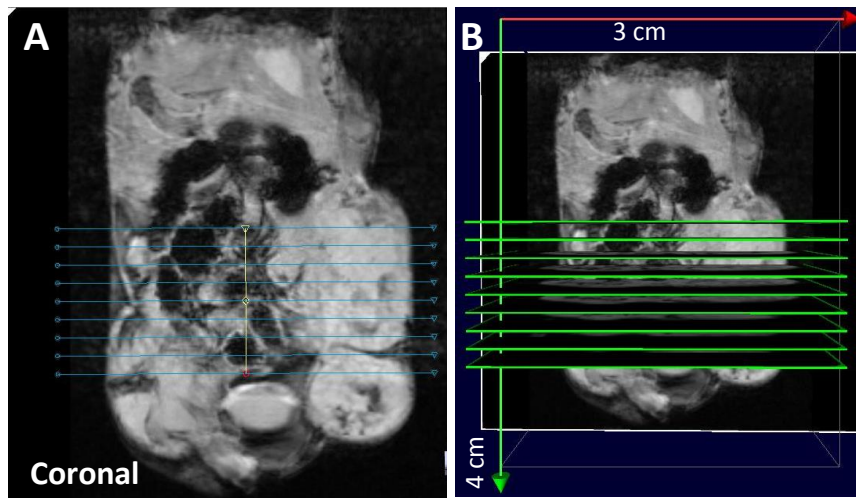
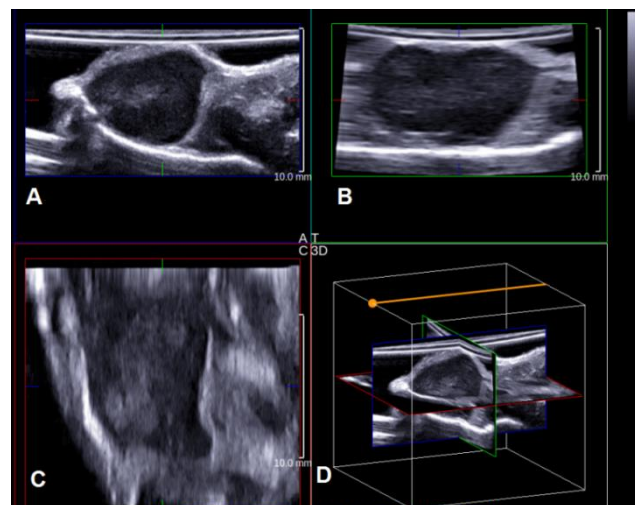


## Supplementary materials



**Figure 9:** Method used for the calculation of tumour volume by MRI. Images show an example from an ectopic tumour on day 15 using a coronal axe (A), and an axial view (B, in green).



**Figure 10:** Ultrasound imaging of CT26 ectopic tumour. Axial plan (A), sagittal plan (B), coronal plan (C) and 3D view (D). Acquire with 8 MHz probe (192 elements, pitch of 0,2 mm, Aixplorer, Supersonic Imagine, Aix en Provence, France).