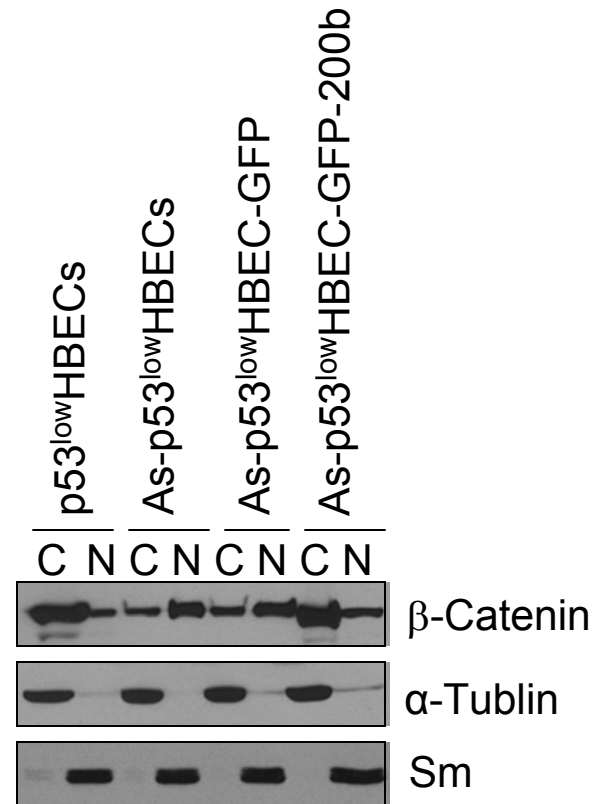


## Supplementary Figure 2.



**Supplementary Figure 2.** Representative Western blot analysis of cellular  $\beta$ -catenin levels at cytoplasmic fraction (**C**) or nuclear fraction (**N**). Cell fractionation was carried out as described in Materials and Methods.  $\alpha$ -Tubulin was used as a marker for the cytoplasmic fraction and the core protein component Sm of the small nuclear ribonucleoprotein complexes (snRNPs) was used as a marker for the nuclear fraction. Sm is a specific nuclear protein as shown in previous studies (Vyakarnam et al. 1998; Haudek et al. 2009).