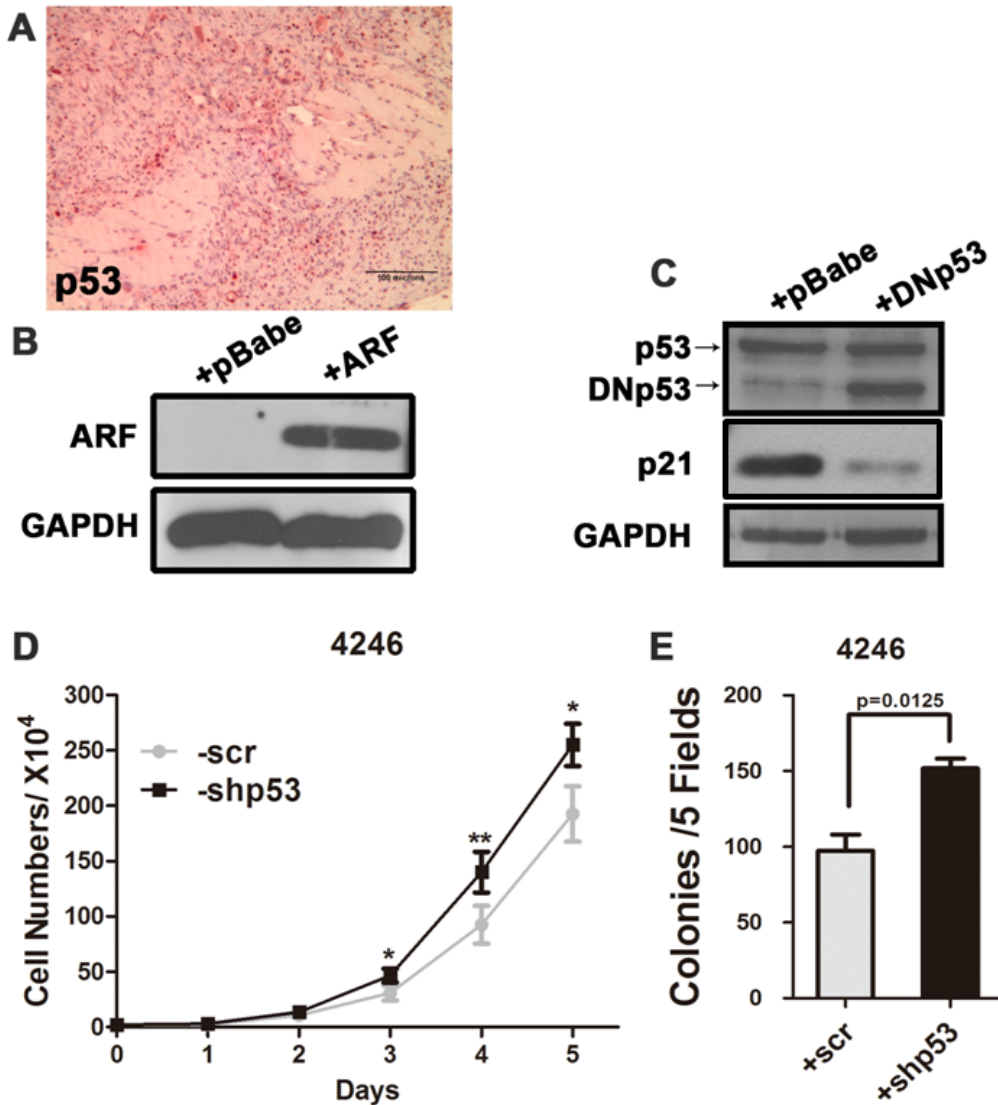


Supplementary Figure 2



Supplementary Figure 2.

(A) Immunohistochemical staining of p53 in representative BRAF^{V600E};ARF^{-/-} tumor section (20X).

(B) Immunoblot for p19^{ARF} shows restoration of ARF in primary BRAF^{V600E};ARF^{-/-} mouse melanoma cell line.

(C) Immunoblot indicates the expression of dominant-negative p53 (DNp53) and p21. Upon DNp53 expression, the induction of p21, a downstream target of p53, was impaired.

(D-E) Growth curve and soft agar colony-formation ability of BRAF^{V600E};ARF^{-/-} primary melanoma cells. Cells (#4246) with shp53 grew faster (D) and formed more colonies (E) than control. Colonies that were bigger than 30µm were quantified. Student t-test, * p < 0.05, ** p < 0.005.