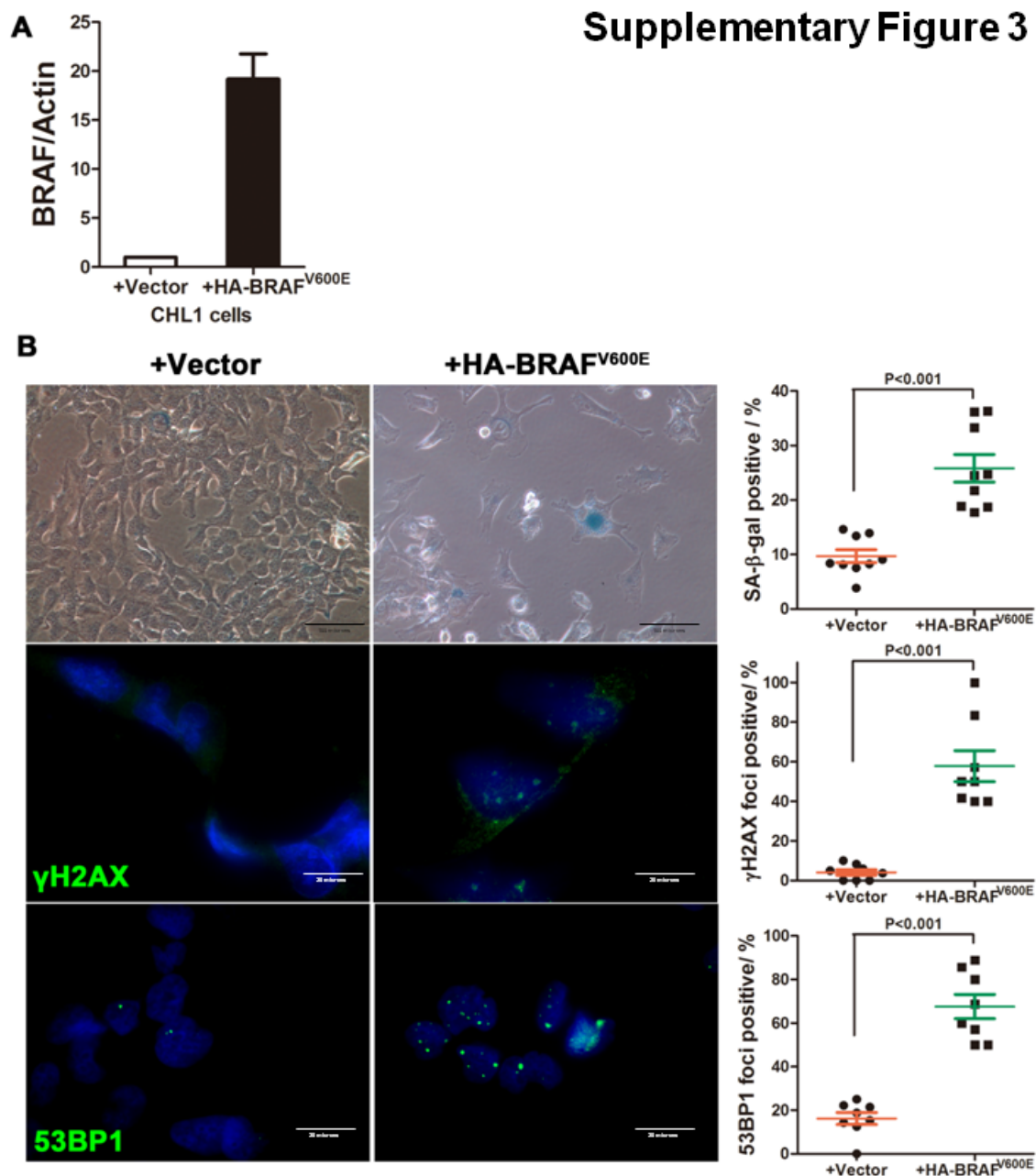


Supplementary Figure 3



Supplementary Figure 3.

(A) Real-time quantitative PCR of CHL1 cells infected with empty vector or HA-BRAF^{V600E} virus to show the expression of exogenous BRAF^{V600E}.

(B) Acute expression of BRAF^{V600E} in BRAF wild-type melanoma cells caused senescence and DNA damage response. SA-β-gal staining, γ H2AX and 53BP1 immunofluorescence staining were performed on the CHL1 cells with or without BRAF^{V600E} addition. Quantification of SA-β-gal-, γ H2AX- and 53BP1-positive cells is shown at the right.