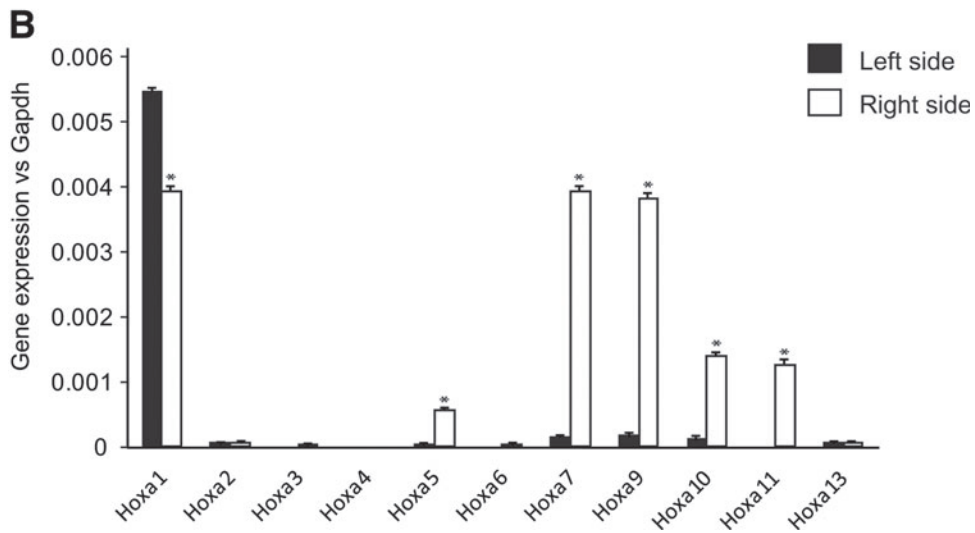


## Supplementary Data

**A**

Left vs. Right Fold Change				Gene Title	Gene Symbol
WT #1	WT #2	null #1	null #2		
-2.14	-2.14	-1.87	-2.46	homeo box A1	Hoxa1
-1.15	-1.23	-2.00	-2.46	homeo box A2	Hoxa2
-2.46	-1.62	-2.14	-1.74	homeo box A4	Hoxa4
-1.41	-5.28	-2.14	-1.62	homeo box A5	Hoxa5
-11.31	-19.70	-64.00	-13.93	homeo box A9	Hoxa9
-2.64	-1.87	-4.29	-4.92	homeo box A10	Hoxa10
-1.62	-1.62	-3.73	-3.03	homeo box A11	Hoxa11
1.00	-1.41	-1.52	-2.83	homeo box A13	Hoxa13
-2.14	-4.59	-1.15	-2.30	homeo box B1	Hoxb1
-2.83	1.52	-1.62	-1.74	homeo box B3	Hoxb3
-1.15	-1.52	-6.96	-1.62	homeo box B5	Hoxb5
-1.32	-2.14	-8.00	-4.29	homeo box B6	Hoxb6
-1.15	-1.41	-2.64	-2.00	homeo box B7	Hoxb7
-2.30	-1.07	-4.59	-2.83	homeo box B8	Hoxb8
-1.07	-3.48	-7.46	-2.64	homeo box C8	Hoxc8
1.00	1.23	-2.46	-1.74	homeo box D1	Hoxd1
-1.52	-3.48	-17.15	-3.48	homeo box D8	Hoxd8



**SUPPLEMENTARY FIG. S1. (A)** *Hox* family transcriptome analysis of WT and *Nkx2-5* null left versus right side of the cardiac crescent. Significant left versus right differential transcript expression is denoted by a red highlight. **(B)** Quantitative reverse transcription (qRT)-polymerase chain reaction (PCR) of *Hox A* family transcripts in WT right (open bar) and left crescent (black bar). Gene expression is normalized to *Gapdh* expression; significant left versus right differential transcript expression is denoted by \* $P < 0.05$ ,  $n = 3$ .