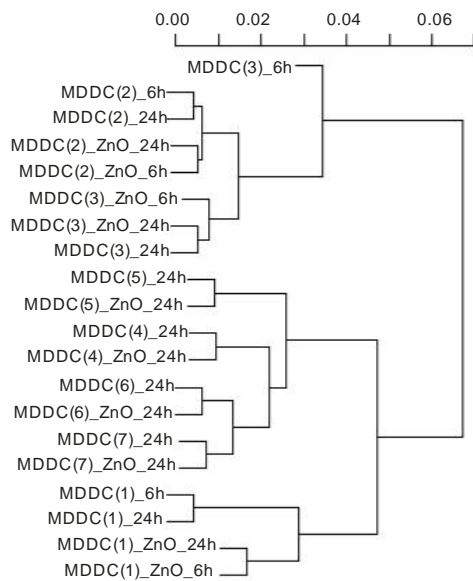
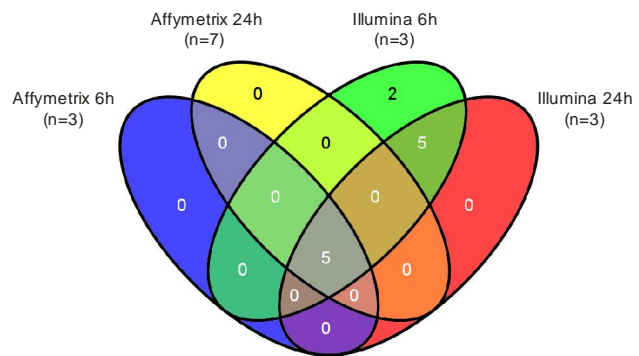


A



B



**Figure S10. ZnO-1 response in MDDCs.** A) Hierarchical clustering of the ZnO-1 (10  $\mu\text{g/ml}$ ) treated, or the untreated control MDDC samples using correlation distance and complete linkage in clustering. Seven different donors were used in the analysis. The gene expressions were measured with Affymetrix GeneChip Human Genome U219 array plates. The samples from the donors 1-3 are the same samples hybridized to Illumina Sentrix HumanHT-12 v3 Expression BeadChips, thus being platform independent technical replicates. The name of the sample is formed by combining the information about cell type, number of replicate in brackets, treatment and timepoint. B) The overlap of the detected statistically ( $\text{FDR} \leq 0.05$  and absolute  $\text{FC} \geq 1.5$ ) differentially expressed genes between the ZnO-1 treated cells and the untreated control cells at the indicated timepoints measured either with Affymetrix GeneChip Human Genome U219 array plates or Illumina Sentrix HumanHT-12 v3 Expression BeadChips. The figure was drawn with VENNY [59]. C) Hierarchical clustering results of all the samples analyzed with Illumina microarrays; HMDM, MDDC or

Jurkat cells exposed with 1 $\mu$ g/ml or 10 $\mu$ g/ml of ZnO-1 or TiO<sub>2</sub> for 6 h or 24 h, (see **Figure S4** and **Table S3**) by using correlation distance with complete linkage.

c

