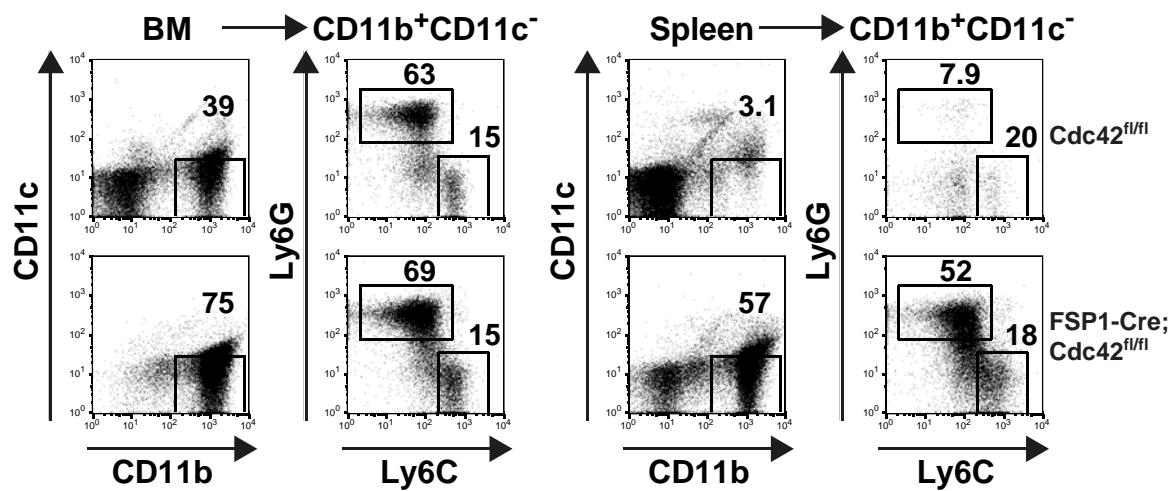
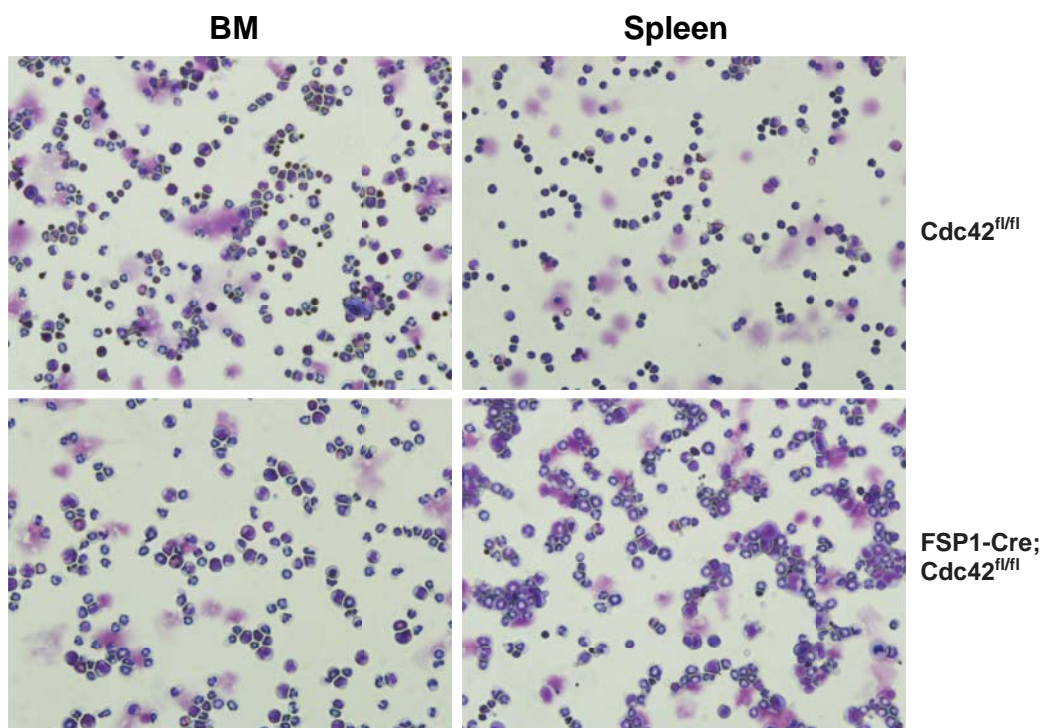


A



B



**Figure S1. Accumulation of neutrophils in Cdc42-deficient mice.** (A) Cells were isolated from the bone marrow (BM) and spleen of FSP1-Cre;Cdc42<sup>fl/fl</sup> and Cdc42<sup>fl/fl</sup> mice, maintained in antibiotic-containing water and analyzed by flow cytometry as in Fig. 5. Shown are representative profiles of CD11b and CD11c in the indicated organs, and FACS profiles of Ly6G and Ly6C in the CD11b<sup>+</sup>CD11c<sup>-</sup> gates. Inset numbers represent the frequencies (%) of CD11b<sup>+</sup>CD11c<sup>-</sup>, Ly6G<sup>+</sup>Ly6C<sup>lo</sup>, and Ly6G<sup>-</sup>Ly6C<sup>hi</sup> populations. (B) Leukocytes of BM and spleen were fixed on cytospin slides and stained with Wright-Giemsa. Shown are representative pictures (400X) of BM and spleen cells (5 Cdc42<sup>fl/fl</sup> and 5 FSP1-Cre;Cdc42<sup>fl/fl</sup> mice).