

Table S1 Side effects of various BCG therapy schedules and doses

	Bladder Contracture		Epid/Prost/Ure Inf		Hematuria		LUTS		Fever/Chills/Flu symptoms	
	Case*	Control*	Case*	Control*	Case*	Control*	Case*	Control*	Case*	Control*
BCG maintenance vs. Induction (Case vs. Control)										
Hinotsu 2011			1/42	0/42	39/42	30/42	39/42	30/42	18/42	11/42
Decobert 2008					17/31	7/40	17/31	7/40	7/31	2/40
Low-dose vs. Standard-dose BCG										
Yalcinkaya 1998			1/25	2/25	14/25	6/25	19/25	24/25	10/25	12/25
Yoneyama 2008					9/65	21/85	31/65	48/85	12/65	20/85
Irie 2003					3/34	7/30	10/37	20/38	2/35	5/39
BCG plus Epirubicin vs. BCG alone (Case vs. Control)										
Bilen 2000	1/20	0/21			4/20	8/21	7/20	9/21	2/20	3/21
Tozawa 2001	0/24	2/50					13/24	20/50	5/24	7/50
BCG plus Interferon α -2b vs. BCG alone (Case vs. Control)										
Nepple 2010									38/346	16/324

BCG, bacillus Calmette-Guérin; CI, confidence interval; Est Rate, estimated occurrence rate; Epid, epididymitis; Ure Inf, Urethral Infections; G/P, Number of group/Number of patients; Induct, induction; LUTS, lower urinary tract symptoms; Maint, maintenance; MMC, mitomycin C; Prost, prostatitis; TURBT, transurethral resection of bladder tumor

* Event / Total numbers

Table S2 Quality assessment for RCTs using Jadad (5-point)

Studies	Randomization	Double blinding	Withdrawals and Dropouts	Total Score
Maintenance vs. Induction				
Badalament 1987	+	-	+	2
Koga 2010	+	-	+	2
Hinotsu 2011	+	-	+	2
Lamm 2000	++	-	+	3
Palou 2001	+	-	+	2
Hudson 1987	++	-	+	3
Low-dose vs. Standard-dose				
Ojea 2007	+	-	+	2
Yalcinkaya 1998	+	-	-	1
Kumar 2002	+	+	+	3
Oddens 2013	+	-	+	2
BCG plus Mitomycin C vs. BCG				
Kaasinen 2003	+	-	+	2
Stasi 2006	++	-	+	3
Oosterlinck 2011	+	-	+	2
Gulpinar 2012	+	-	-	1
El Mohsen 2010	+	-	-	1
BCG plus Mitomycin C vs. Mitomycin C alone				
Rintala 1996	+	-	-	1
Jarvinen 2012	+	-	-	1
Witjes 1998	+	-	-	1
BCG plus Epirubicin vs. BCG alone				
Cai 2008	++	++	+	5
Bilen 2000	+	-	-	1
BCG plus Interferon α -2b vs. BCG alone				
Nepple 2010	++	-	-	2

Table S3 Quality assessment for retrospective study using Newcastle-Ottawa Scale

Studies	Selection	Comparability	Outcome/exposure	Total Score
Maintenance vs. Induction				
Andius 2004	★★★★		★★★	7
Okamura 2011	★★★★	★★	★★★	9
Decobert 2008	★★★★	★★	★★★	9
Low-dose vs. Standard-dose				
Takashi 1995	★★★★	★★	★★★	9
Yoneyama 2008	★★★★	★★	★★★	9
Irie 2003	★★★★	★★	★★★	9
BCG plus mitomycin C vs. BCG				
Badalato 2011	★★★★	★	★★★	8
BCG plus Epirubicin vs. BCG alone				
Tozawa 2001	★★★★	★★	★★★	9
BCG plus Interferon α -2b vs. BCG alone				
Bazarbashi 2000	★	★	★	3

Fig. S1 Summary of cessation-free survival for combination of BCG and Mitomycin C (A, BCG plus Mitomycin C vs. BCG alone; B, BCG plus Mitomycin C vs. Mitomycin C alone)

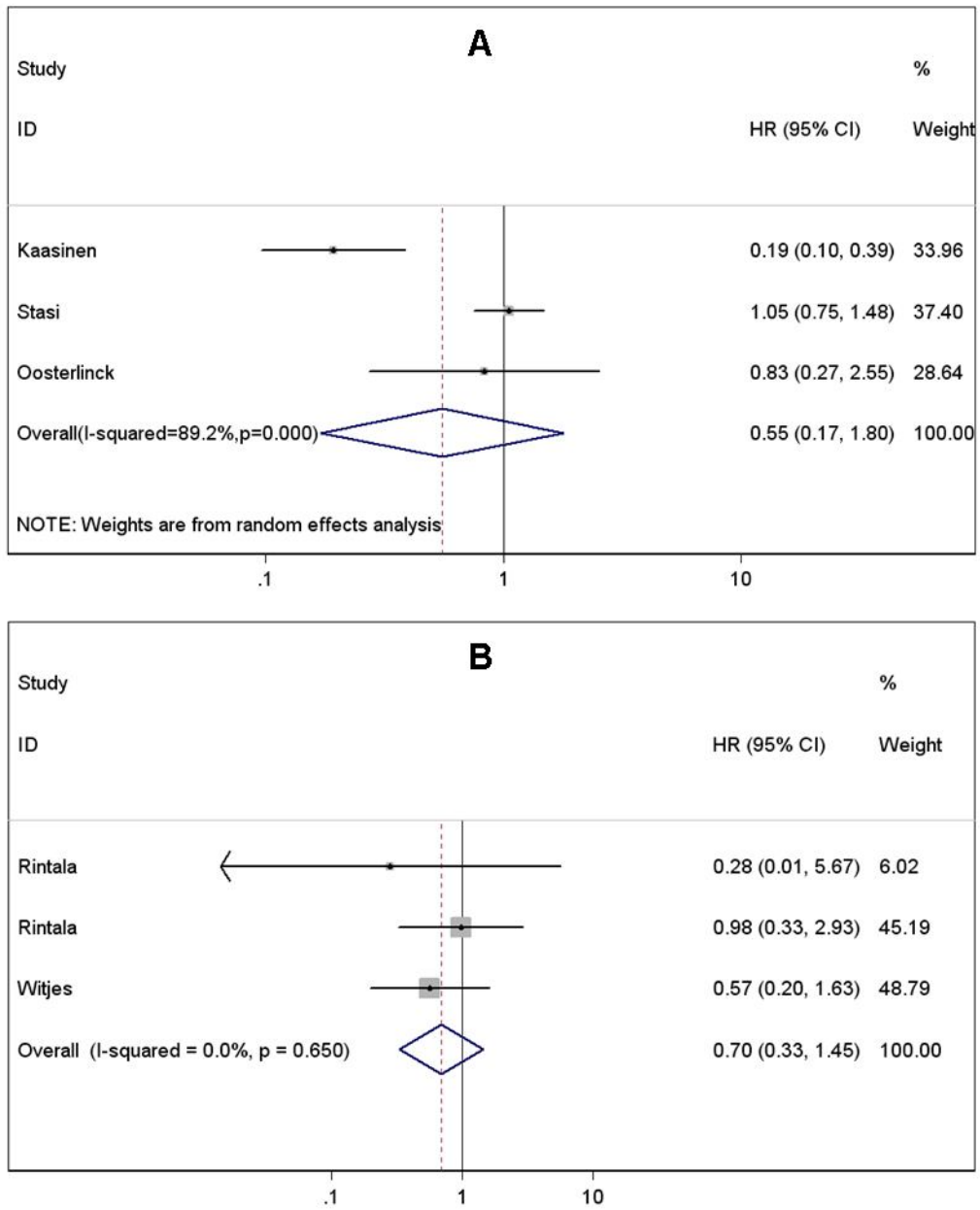


Fig. S2 Summary risk difference of side-effect for various BCG therapy schedules and doses

