



## **Supplemental Material to:**

**María C. Vanrell, Juan A. Cueto, Jeremías J. Barclay,  
Carolina Carrillo, María I. Colombo, Roberta A. Gottlieb  
and Patricia S. Romano**

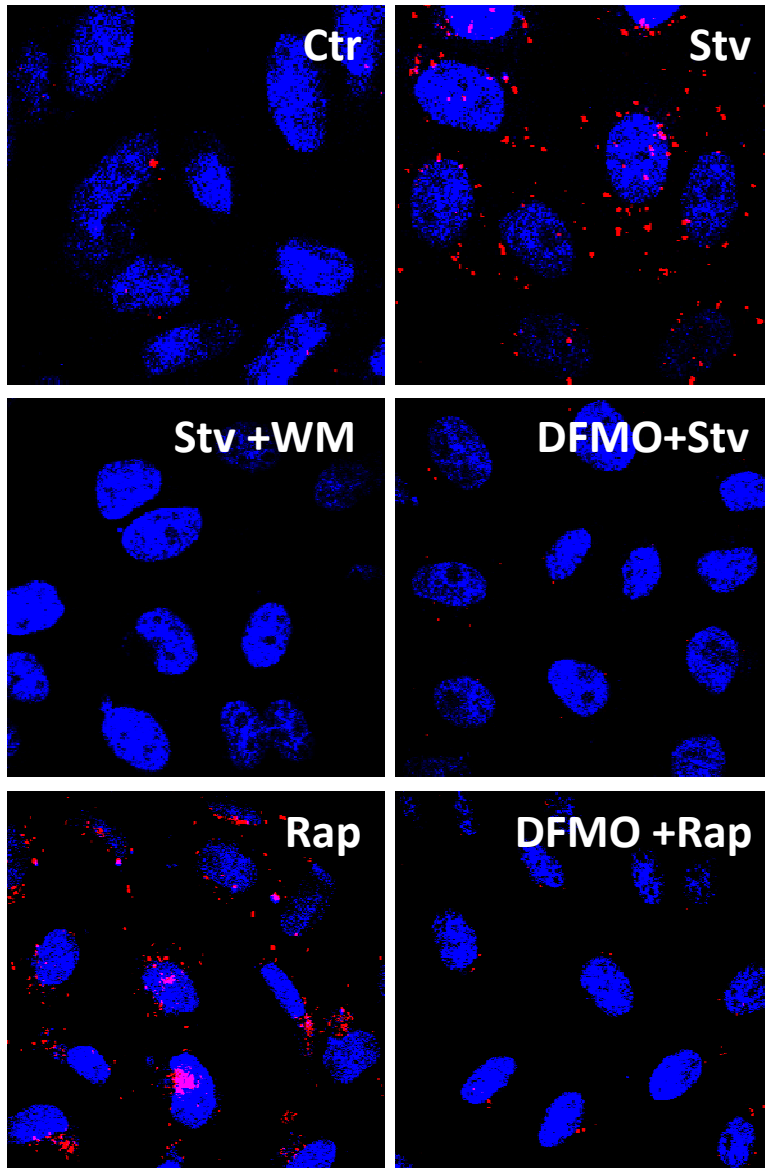
**Polyamine depletion inhibits the autophagic response  
modulating *Trypanosoma cruzi* infectivity**

**Autophagy 2013; 9(7)**

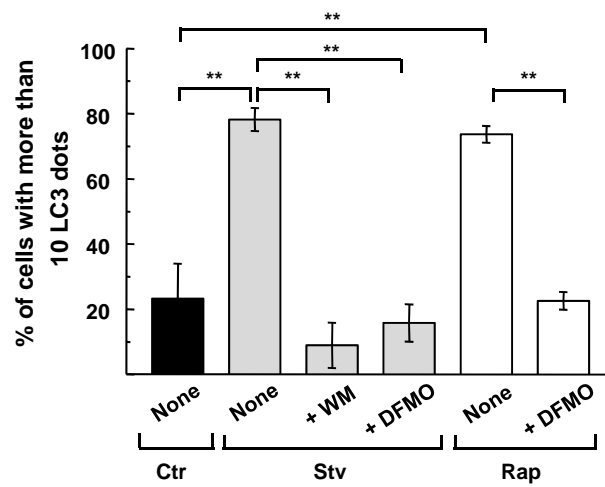
**<http://dx.doi.org/10.4161/auto.24709>**

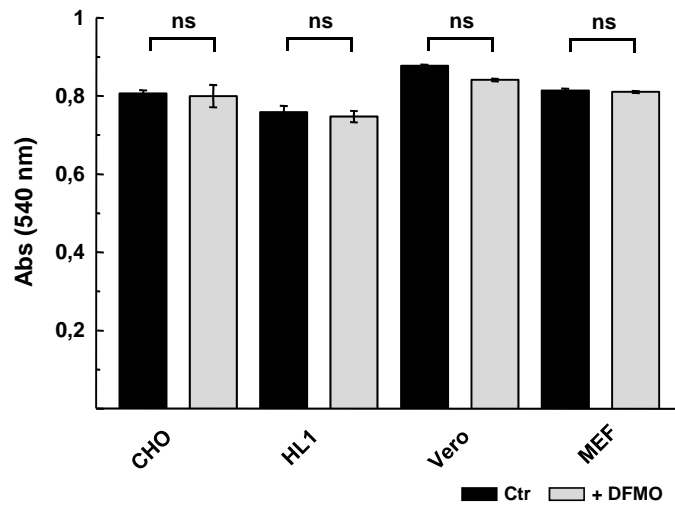
**[www.landesbioscience.com/journals/autophagy/article/24709](http://www.landesbioscience.com/journals/autophagy/article/24709)**

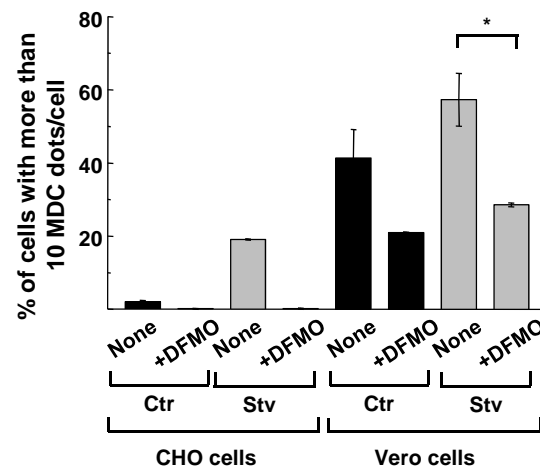
**A**



**B**







## Supplemental Material

**Figure S1.** Detection of endogenous LC3 protein in DFMO-treated cells. Experiments were conducted as described in Fig. 1. CHO cells were treated under the indicated conditions followed by detection of endogenous LC3 with a specific antibody. **(A)** Confocal images depict the presence of LC3 labeled vesicles (red) and DNA (blue) under the indicated conditions. **(B)** Graph shows the percentage of cells with more than ten LC3-labeled dots per cell in each condition. Data represent the mean +/- SEM of at least three independent experiments (number of counted cells  $\approx$ 100). Significantly different from control: \*\* $p < 0.01$ .

**Figure S2.** DFMO does not affect cell proliferation. The indicated cell types were grown in full nutrient medium in the presence (+ DFMO) or absence of 1 mM DFMO during 48 h followed by the alamarBlue assay as described in Materials and Methods. Data represent the mean +/- SEM of one experiment performed with triplicates, and is representative of two independent experiments, ns, non-significant.

**Figure S3.** Basal autophagy is higher in Vero than CHO cells and is reduced by DFMO-treatment. CHO and Vero cells were grown in full nutrient media alone (None) or in the presence of 1 mM DFMO (+ DFMO) for 48 h and then were incubated for 2 h in control (Ctr) or starvation (Stv) medium followed by MDC labeling as described in Materials and Methods. Percentage of cells with more than 10 MDC-labeled dots per cell was calculated from each condition. Data represent the mean +/- SEM of at least three independent experiments (number of counted cells  $\approx$ 100). Significantly different from control: \* $p < 0.05$ .