

	WT	XBP1 ^{ΔAd}	<i>t-test</i>
Serum triglyceride [mg/ml TG]	1.70 ± 0.09	1.69 ± 0.09	0.966
Serum FFA [mmol/L]	0.330 ± 0.073	0.295 ± 0.003	0.736
Serum Insulin [ng/ml]	0.491 ± 0.13	0.471 ± 0.018	0.350
Blood glucose [mg/dL]	160 ± 3.4	150 ± 5.5	0.144
Body weight [g]	20.8 ± 0.48	20.7 ± 0.61	0.834
GWAT weight [g]	0.508 ± 0.13	0.507 ± 0.10	0.989
#4 Mammary weight [g]	0.345 ± 0.06	0.322 ± 0.04	0.769

Table S1. Basal metabolic parameters in WT and XBP1^{ΔAd} female mice

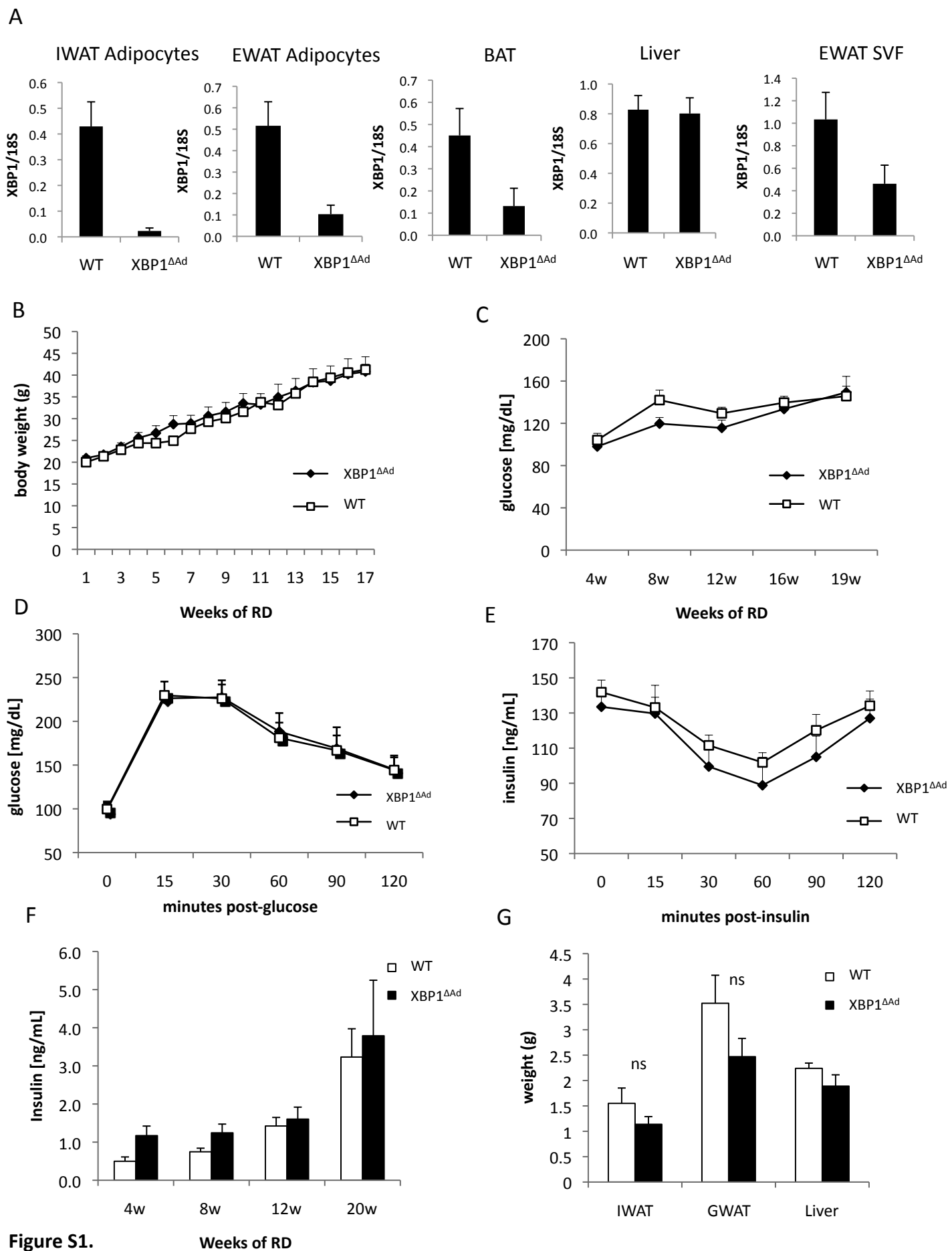


Figure S1.

Weeks of RD

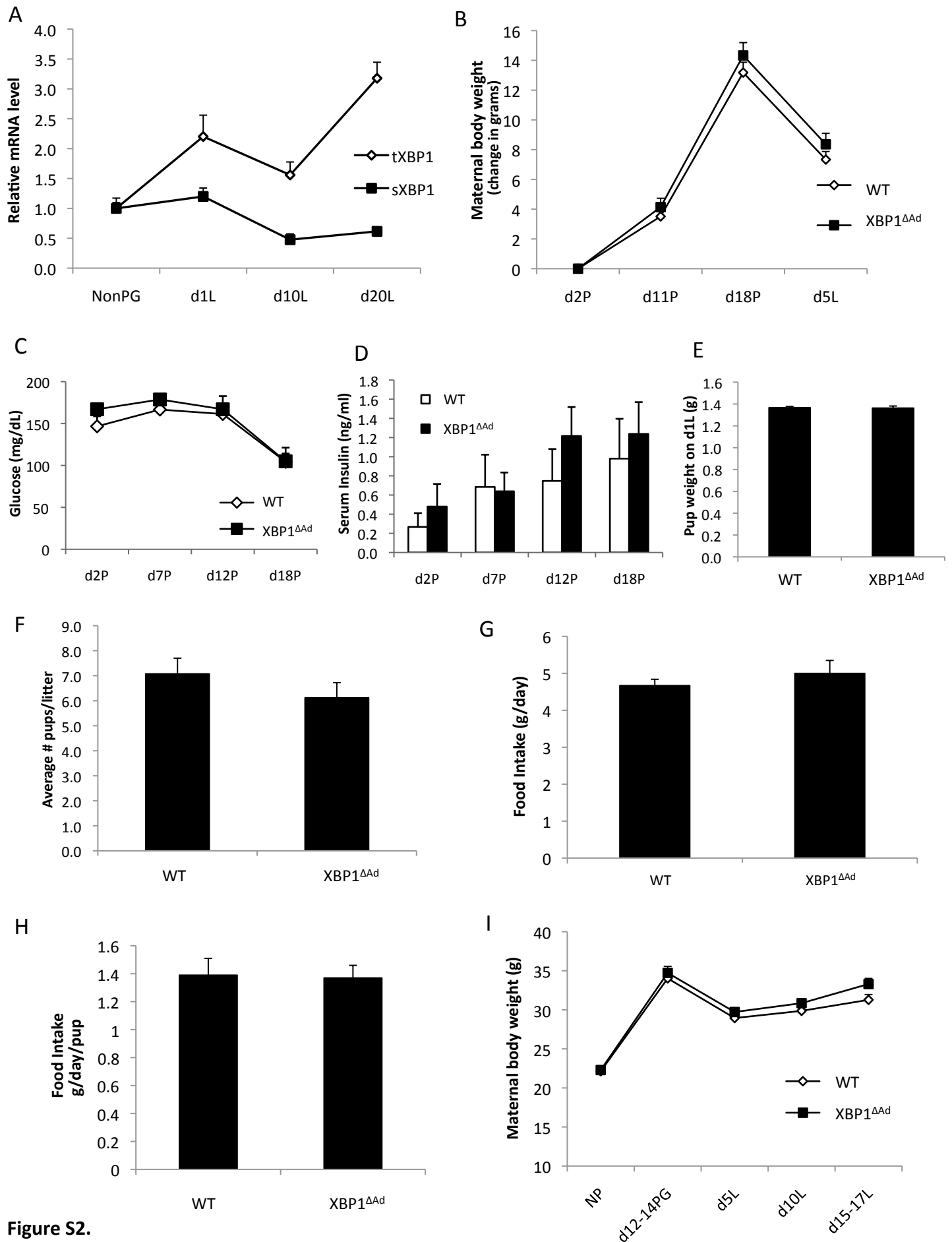


Figure S2.

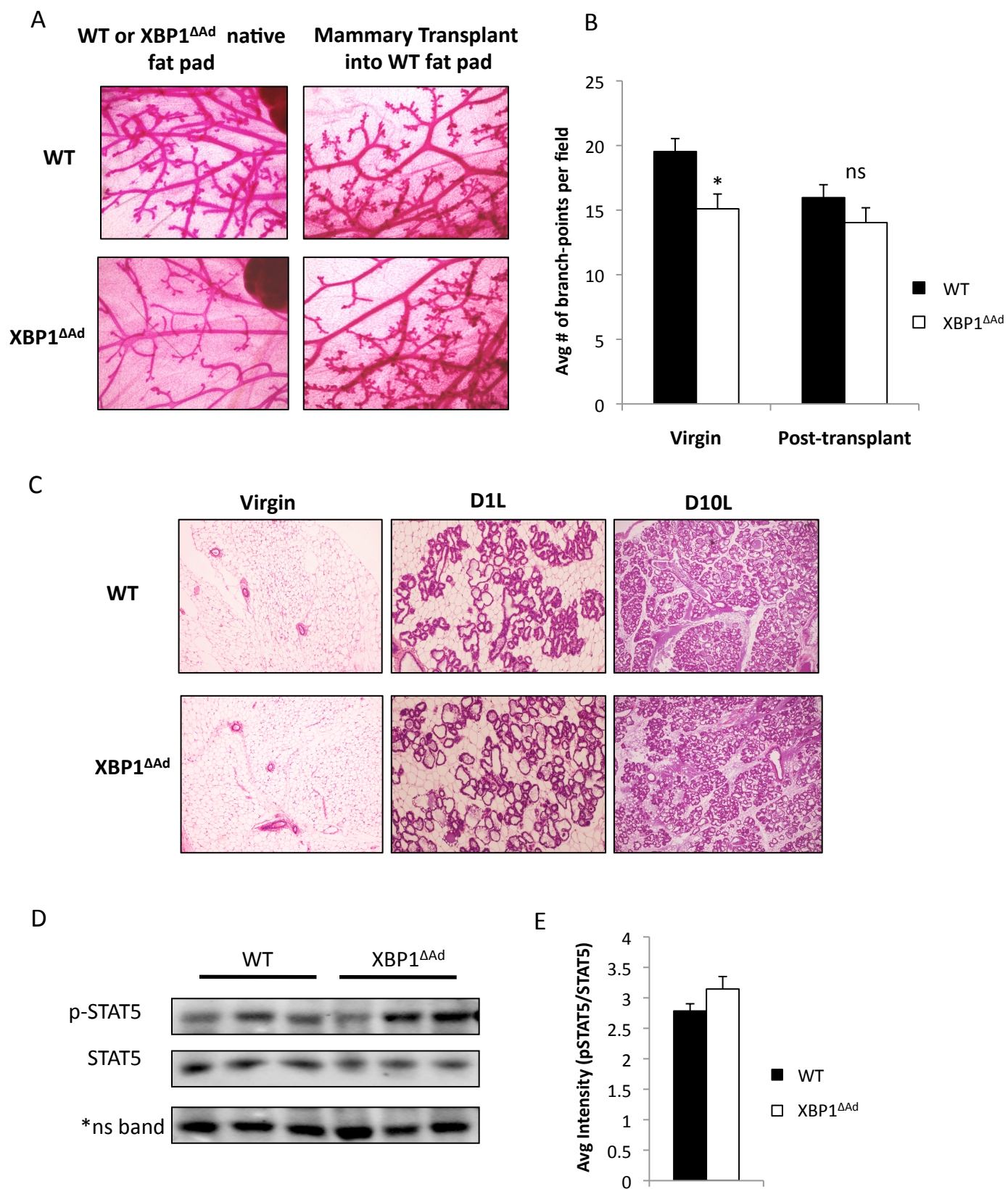


Figure S3.

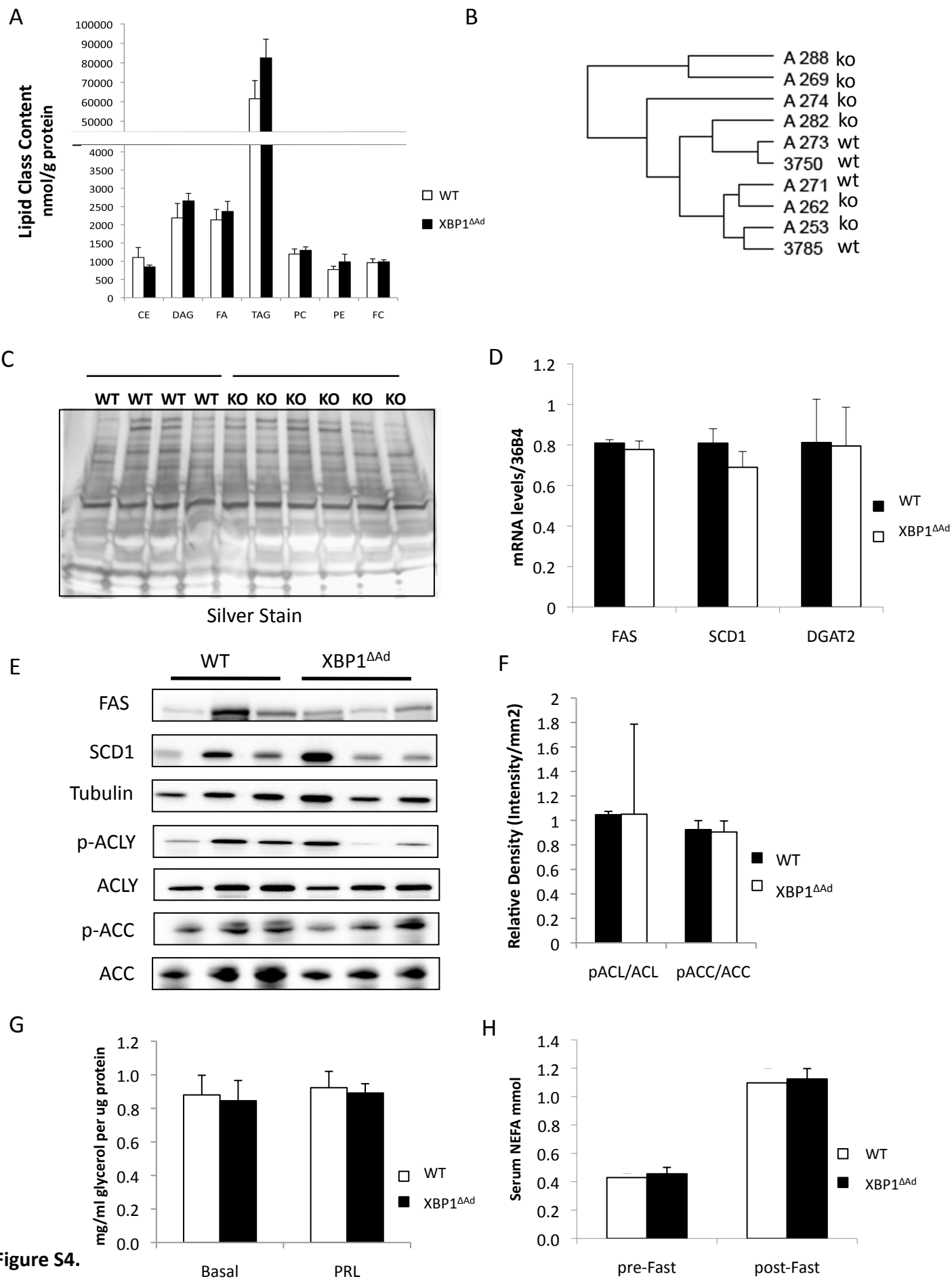


Figure S4.