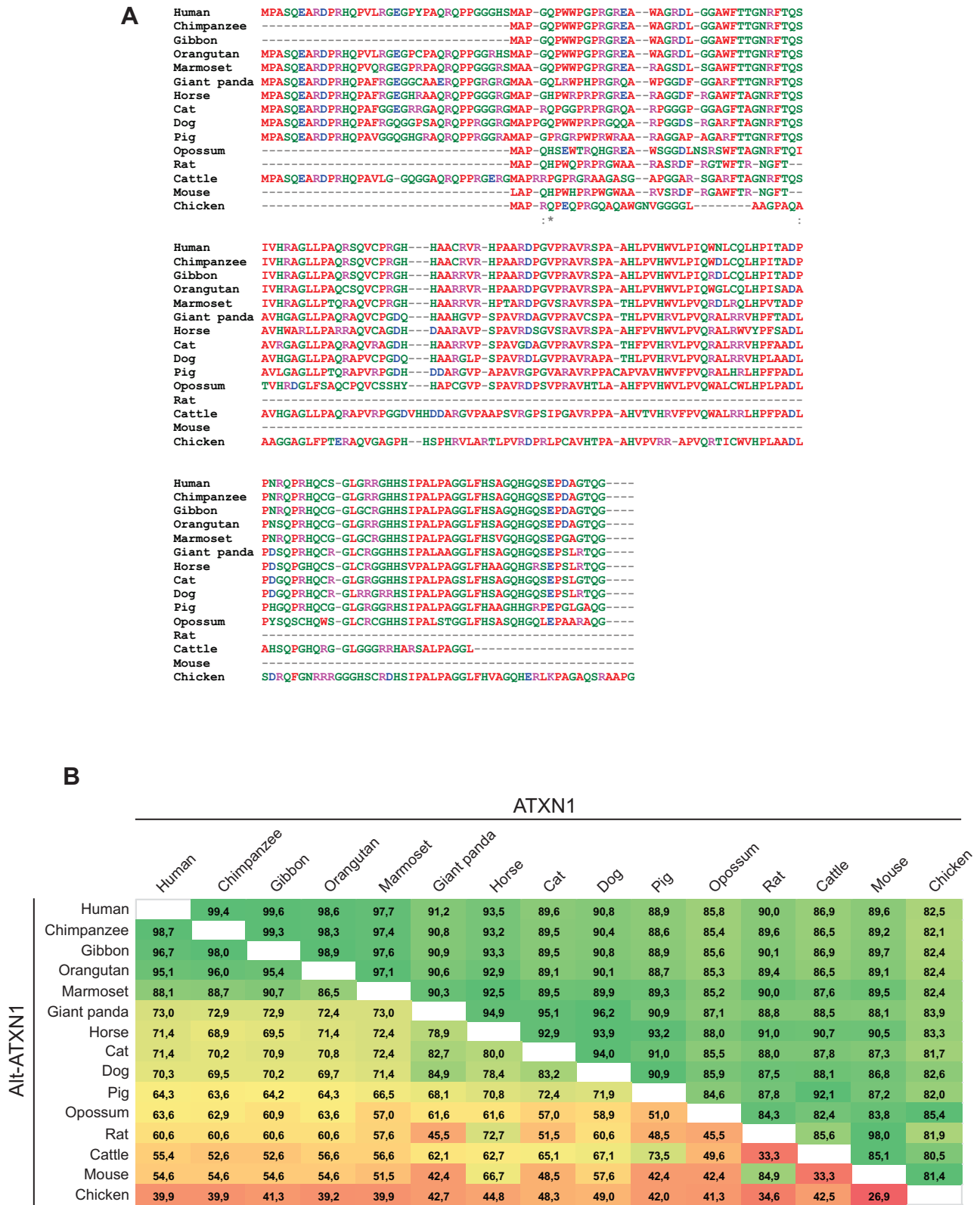


**Figure S1**



**Figure S1: Alt-ATXN1 is conserved among different species. (A)** Multiple sequence alignment of Alt-ATXN1 performed with Clustal Omega. The NCBI Gene Database was used to predict the protein sequences. **(B)** Comparison of the percent identity of ATXN1 (bottom left) and Alt-ATXN1 (top right) between human and eukaryotic species, obtained with Clustal Omega.