

Human mesenchymal stem cells creating an immunosuppressive environment and promote breast cancer in mice

Biljana Ljujic¹, Marija Milovanovic¹, Vladislav Volarevic¹, Bridgid Murray², Diana Bugarski³, Stefan Przyborski², Nebojsa Arsenijevic¹, Miodrag L. Lukic¹ & Miodrag Stojkovic¹

Supplemental data

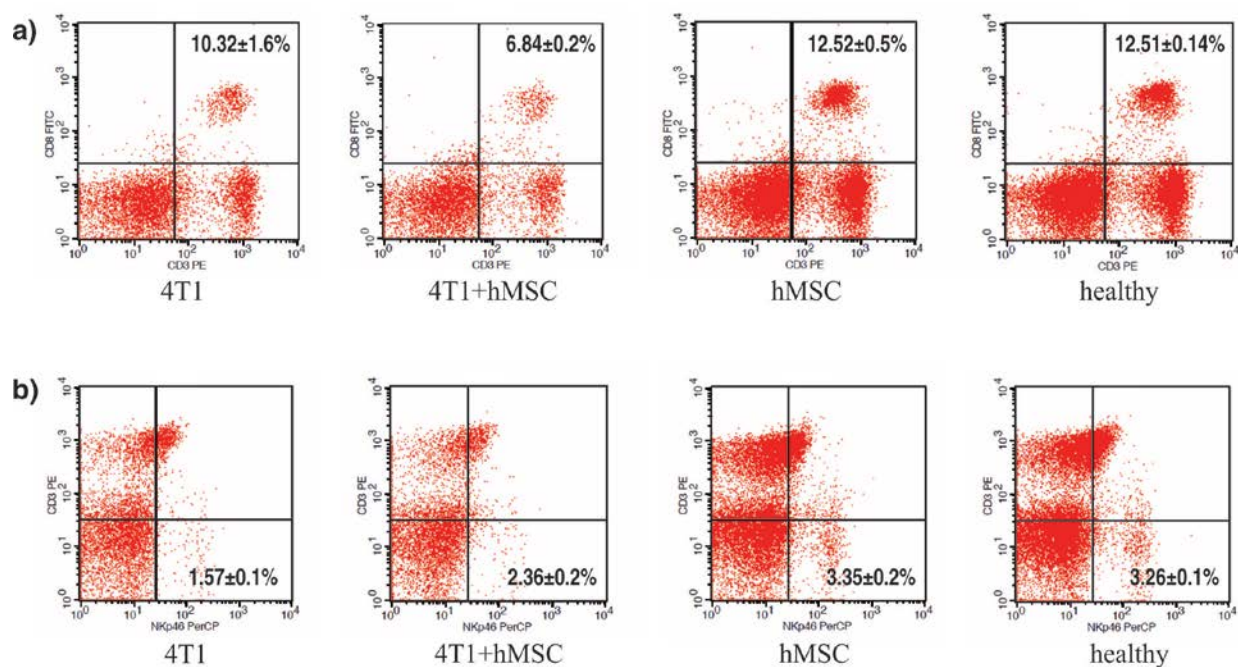


Figure S1. Flow cytometry analysis of splenocytes phenotype. Splenocytes phenotype was analyzed by flow cytometry using a combination of cell surface markers.

a) Dotplots representative of cell cultures showed homogeneous population positive for CD3 and CD8 cell surface markers.

b) Dotplots representative of cell cultures showed homogeneous population negative for CD3 and positive for NKp46 cell surface markers.