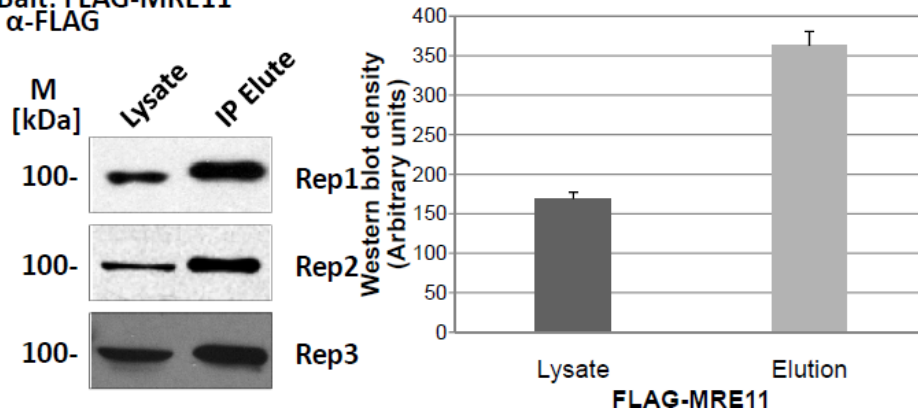


IP Bait: FLAG-MRE11
IB: α -FLAG



Supplementary Figure 1. Affinity purification enrichment for bait protein FLAG-MRE11. (A) Western blots analysis of lysate and elution fractions before (Lysate) and after (IP Elute) affinity purification using anti-FLAG resin. Three biological replicates are used in affinity purification and blotted with anti-FLAG serum that are shown. 20ug of total cell lysate and 2ug of total elute (1/20 of elution fraction) were loaded on the gel for this analysis. (B) Quantitative western blots using Image J software and plotted for three biological replicated experiments based on the band intensities on their images. Average band intensity (represented by arbitrary units) with standard deviation were plotted for Lysate and Elution fractions. M stands for protein standard marker. Rep stands for biological replicates. IP stands for immunoprecipitation and IB stands for immunoblotting.