

Supplementary data

Supplementary data

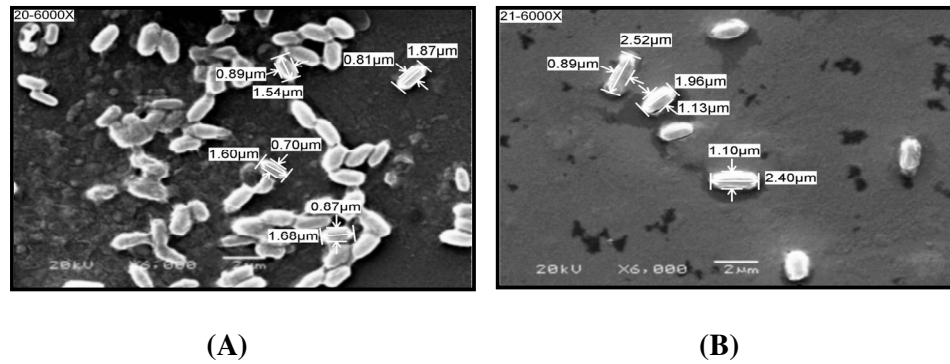


Figure 1: Scanning electron microscope of *Bacillus* sp. MA20 and *Bacillus* sp. MA21 at 6000X with bacterial size. (Fig. A) is *Bacillus* sp. MA20 while (fig. B) is *Bacillus* sp. MA21.

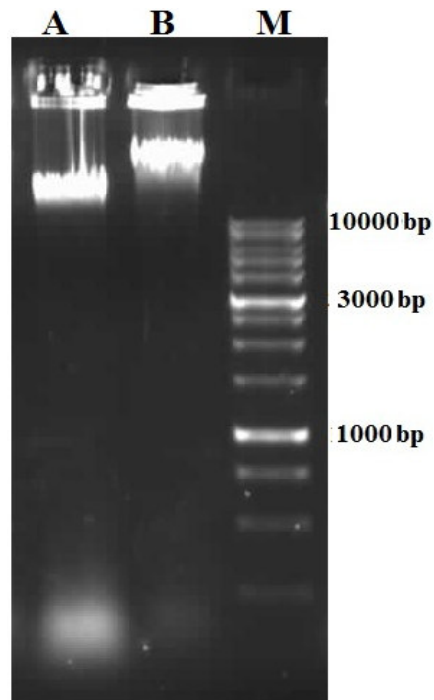


Figure 2: DNA of *Bacillus* sp. MA20 and *Bacillus* sp. MA21 separated in 1% agarose gel. The lane (A) is DNA from *Bacillus* sp. MA20, lane (B) is DNA from *Bacillus* sp. MA21, and lane (M) is 1 Kb DNA ladder.

Supplementary data

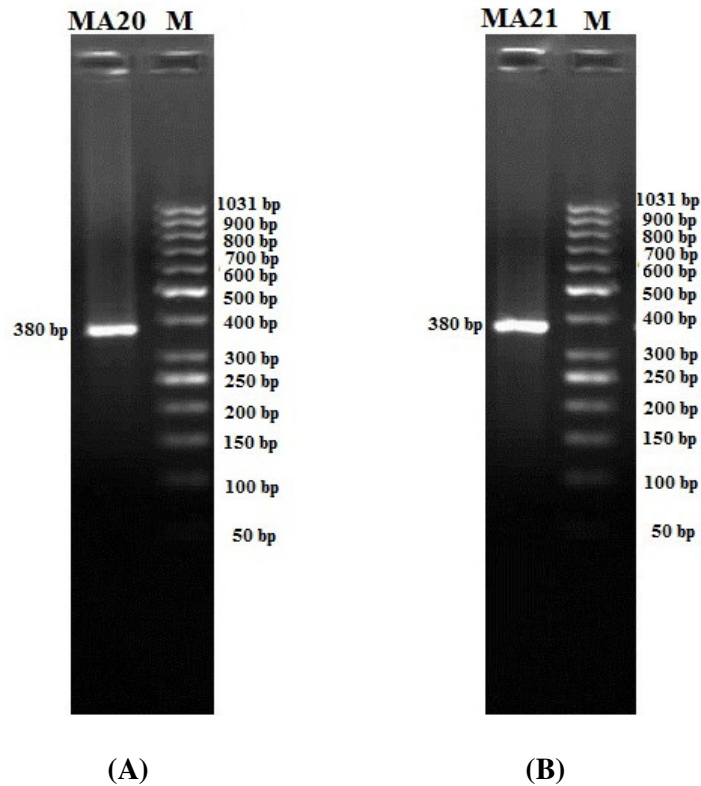


Figure 3: Amplified 16S rRNA gene from the DNA of *Bacillus sp.* MA20 and *Bacillus sp.* MA21 on 2% agarose gel. Lane (MA20) is from *Bacillus sp.* MA20, lane (MA21) is from *Bacillus sp.* MA21 and lane (M) is DNA ladder.

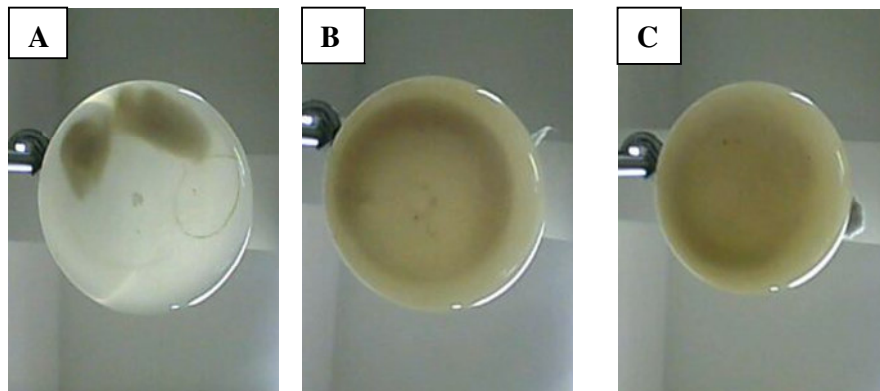


Figure 4: Flask containing wool degraded in keratinolytic protease production medium by *B. amyloliquefaciens* MA20 and *B. subtilis* MA21. Figure (A) is control medium, figure (B) is wool degraded by *B. amyloliquefaciens* MA20, and figure (C) is wool degraded by *B. subtilis* MA21.