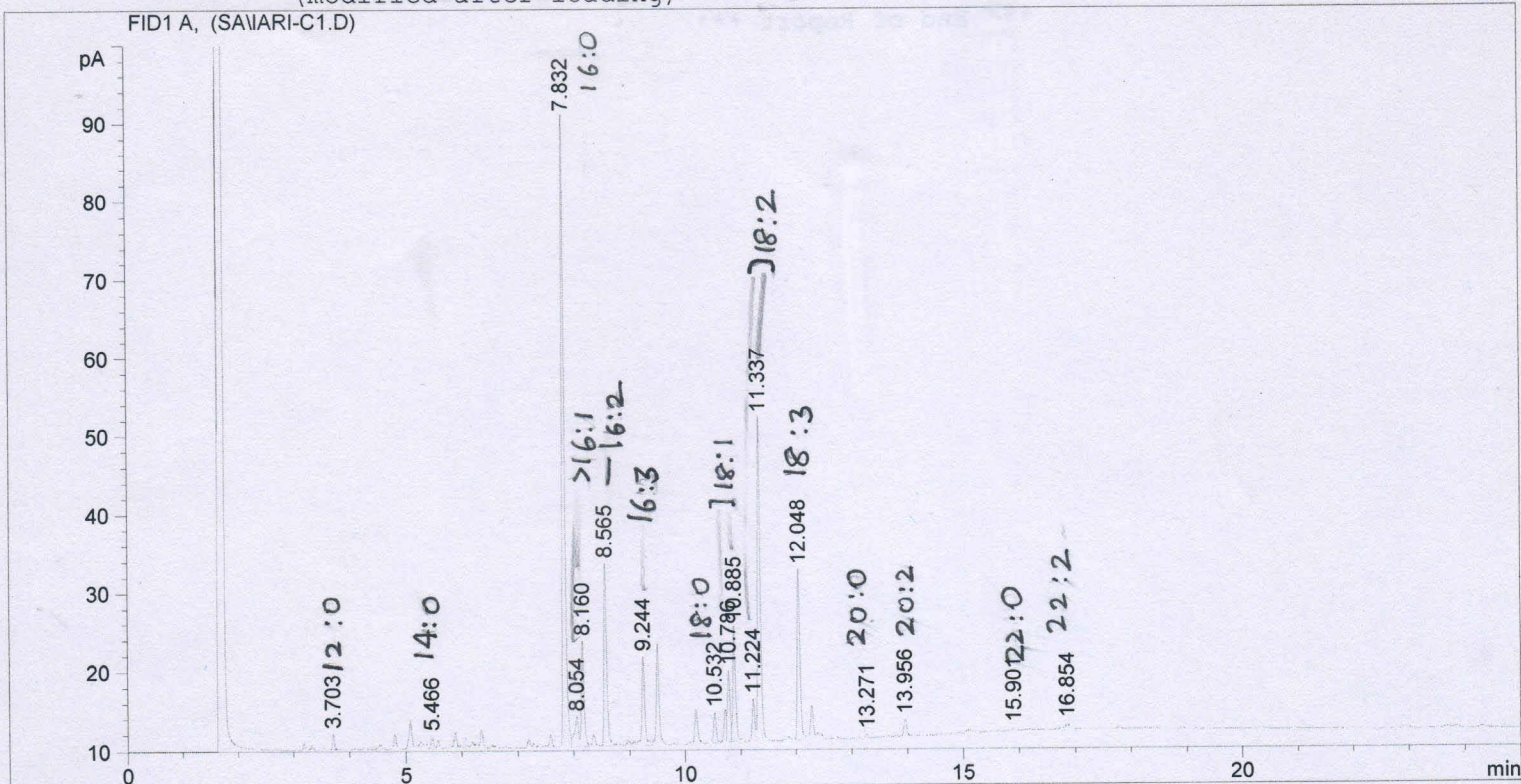


Injection Date : 3/21/2012 9:01:22 PM Seq. Line : 3
 Sample Name : C FAME *Chlorella sp. BBM + Sodium* Location : Vial 203
 Acq. Operator : MADHU *Thiosulphate + Trp* Inj : 1
 Acq. Instrument : Instrument 1 *(4th day)* Inj Volume : 2 µl
 Acq. Method : C:\HPCHEM\1\METHODS\DB225.M
 Last changed : 3/21/2012 6:21:29 PM by MADHU
 Analysis Method : C:\HPCHEM\1\METHODS\DB225.M
 Last changed : 3/24/2012 11:51:39 AM by SARIKA
 (modified after loading)



Area Percent Report

Sorted By : Signal
 Multiplier : 1.0000
 Dilution : 1.0000
 Use Multiplier & Dilution Factor with ISTDs

Signal 1: FID1 A,

Peak #	RetTime [min]	Type	Width [min]	Area [pA*s]	Height [pA]	Area %
1	3.703	BB	0.0392	4.72207	1.88892	0.59797 <i>12:0</i>
2	5.466	BV	0.0476	4.63677	1.51998	0.58717 <i>14:0</i>
3	7.832	BV	0.0498	260.28680	80.26655	32.96095 <i>16:0</i>
4	8.054	VV	0.0714	18.27079	3.71463	2.31369 <i>16:1</i>
5	8.160	VV	0.0510	44.28304	13.26271	5.60770 <i>16:1</i>
6	8.565	VB	0.0509	77.16542	23.11693	9.77170 <i>16:2</i>
7	9.244	VB	0.0570	41.00816	11.13119	5.19299 <i>16:3</i>
8	10.532	BB	0.0489	11.90144	3.76648	1.50712 <i>18:0</i>
9	10.786	VV	0.0502	29.22565	8.93167	3.70094 <i>18:1</i>
10	10.885	VB	0.0507	48.05696	14.48589	6.08561 <i>18:1</i>
11	11.224	BV	0.0514	16.83326	5.25741	2.13165 <i>18:2</i>
12	11.337	VB	0.0546	142.76286	41.00827	18.07852 <i>18:2</i>
13	12.048	BB	0.0534	76.67740	21.62199	9.70990 <i>18:3</i>
14	13.271	BP	0.0542	1.53435	4.44777e-1	0.19430 <i>20:0</i>
15	13.956	BB	0.0566	7.52102	2.05772	0.95241 <i>20:2</i>

Peak #	RetTime [min]	Type	Width [min]	Area [pA*s]	Height [pA]	Area %
16	15.901	PP	0.0535	1.00173	2.95821e-1	0.12685
17	16.854	BP	0.0775	3.79473	7.19741e-1	0.48054

Totals : 789.68246 233.49067

Results obtained with enhanced integrator!

*** End of Report ***