

SUPPLEMENTAL MATERIAL

Chow et al., <http://www.jem.org/cgi/content/full/jem.20130498/DC1>

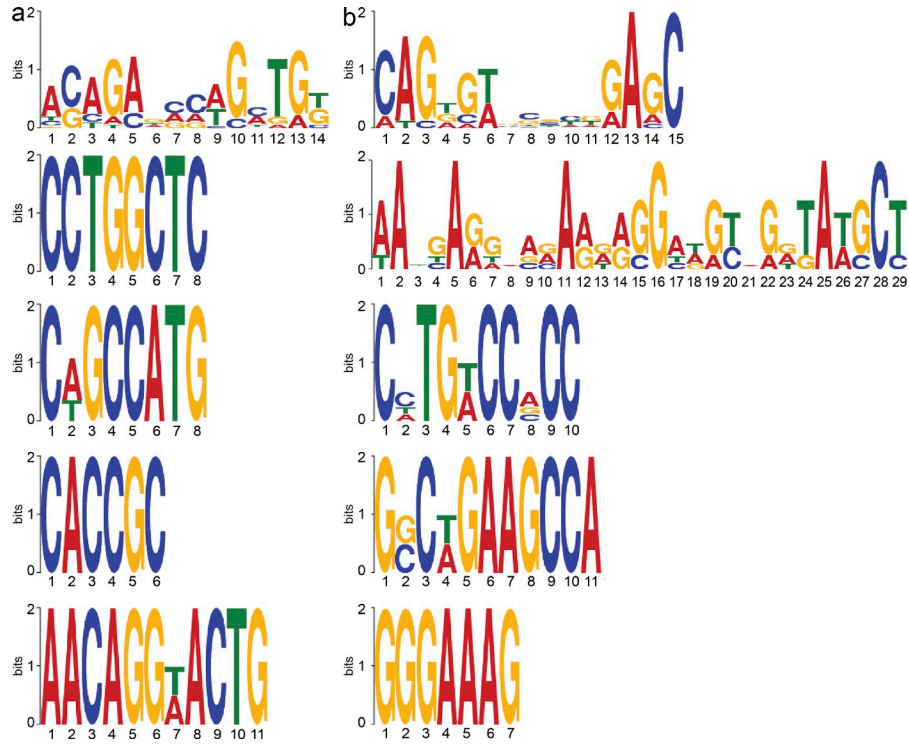


Figure S1. Foxo1 binding peaks at S215A-sensitive and -insensitive genes enrich for different motifs. (a) Five most enriched sequences found within Foxo1 binding regions at *Rag* and *Aicda* loci (Foxo1-S215 sensitive). (b) Five most enriched sequences found at Foxo1 binding regions at other Foxo1-dependent but S215-independent loci.

Table S1. Foxo1 mutants and primers used for mutagenesis

Residues	Primer sequence (5'-3')
T24A	CGGCAGCGCTCCTGTGCTGGCCG
S253A	CGGAGAAGAGCTGCGCCATGGACAACAACA
S316A	TTCGTCTCGAACCAGCGCAAATGCTAGTACCATC
S215A	CAATTCGCCACAATCTGGCCCTCACAGCAAGTTT
R248/250K	CAAGAGCGGAAAATACCCCAAGAGAAAAGCTGCGTCCATGGACAAC
R311/313K	CCACAGCAACGATGACTTTGATAACTGGAGTACATTTAAGCCTAAAACAGCTCAAATGCTAGTA
K242/245R	CAGAGGGAGGCAGAGCGGAAGATCACCCCGGAG
K262R	GACAACAACAGTAAATTTGCTAGGAGCCGAGGGCG
K242/245Q	CCAGAGGGAGGCCAGAGCGGACAGTCACCCCGGAGA
K262Q	GGACAACAACAGTAAATTTGCTCAGAGCCGAGGGC
S150A	GCCGCGCAAGACCCGCGGCGCGCCGCAACGC
S181A	AGAGGCTCACCTGGCGCAGATCTACGAG
S246A	GGAGGCAAGAGCGGAAAAGCACCCCGGAG
S319/322/326A	GAACCAGCTCAAATGCTGCTACCATCGCTGGGAGACTTGCTCCCATCATGACAGAG

Table S2. Quantitative RT-PCR primers

Transcripts	Forward primer (5'-3')	Reverse primer (5'-3')
<i>Rag1</i>	CATTCTAGCACTCTGGCCGG	TCATCGGGTGCAGAAGTCAA
<i>Rag2</i>	TTAATTCCTGGCTTGGCCG	TTCCTGCTTGTGGATGTGAAAT
<i>Aicda</i>	GCCACCTTCGCAACAAGTCT	CCGGGCACAGTCATAGCAC
<i>Efh1</i>	CGGACTCCGAACTGAACCTC	AACTCCGGGAACTCGGTGTA
<i>Ccdc135</i>	AGGCGACTTAAGGAAGAGGAAG	AGTCAGAGGGTTCGATGAAGAAG
<i>Sema6d</i>	GAGAATCCAATCAGATGGTCCAC	CATGTCACGGTAGCAGTACAC
<i>Cd36</i>	GGGAAGACAATCAAAGGGAAGTTGTC	TGCTGTCTTTGCCACGTCATCTG
<i>Bank1</i>	ATCTGTTCCAGGTTGGCCTAGCA	AGAGCCCATTCCTCAGCATCTTCT
<i>Cd74</i>	AGTGCGACGAGAACGTAAC	CGTTGGGGAACACACACCA
<i>Mapkapk2</i>	CGGCGAGGCCATCCAGTACCT	CCCAGGACTTCCGGAGCCACAT
<i>Mapkapk3</i>	GAACCCAAGAAGTACGCGGT	GGCTGTCATACAGGAGCTTCA
<i>Hprt</i>	CTGGTGAAAAGGACCTCTCG	TGAAGTACTCATTATAGTCAAGGCA