

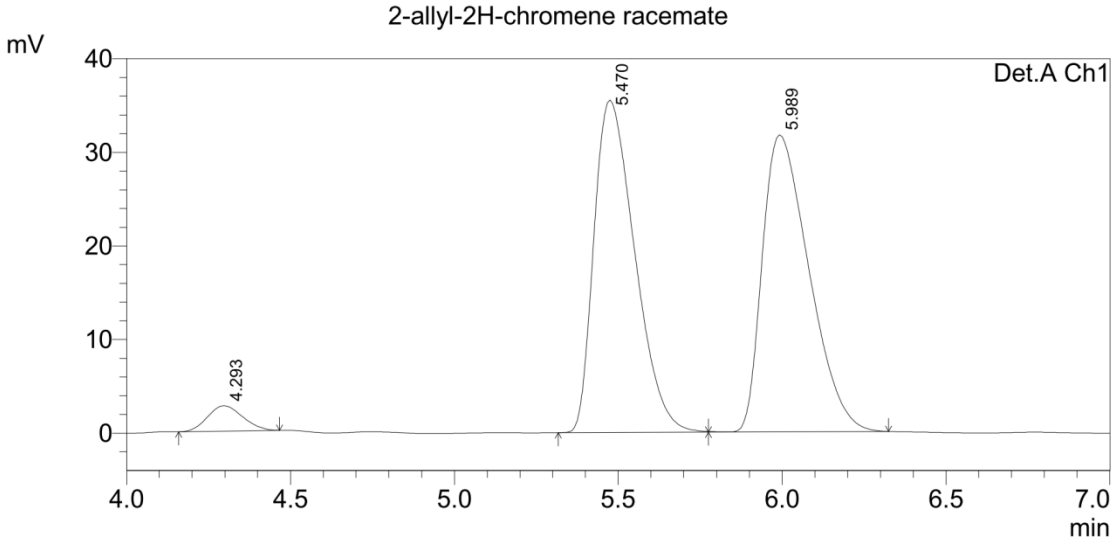
Bimolecular Coupling Reactions through Oxidatively Generated Aromatic Cations: Scope and Stereocontrol

Yubo Cui, Louis A. Villafane, Dane J. Clausen, and Paul E. Floreancig*

*Department of Chemistry, University of Pittsburgh, Pittsburgh, Pennsylvania 15260
florean@pitt.edu*

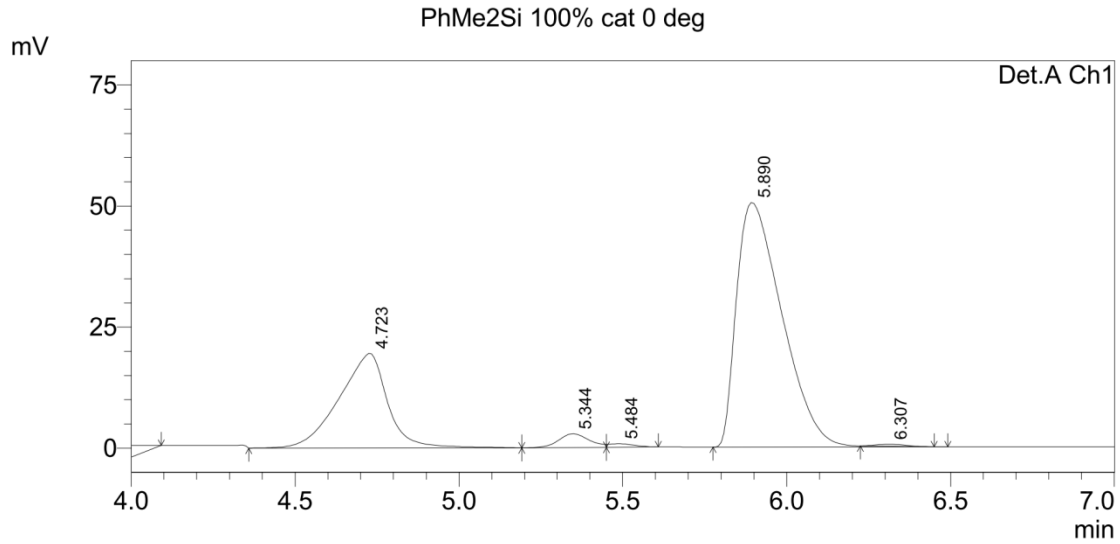
Supporting Information

1.	HPLC traces	2
2.	NMR spectra	7



1 Det.A ChDetector A

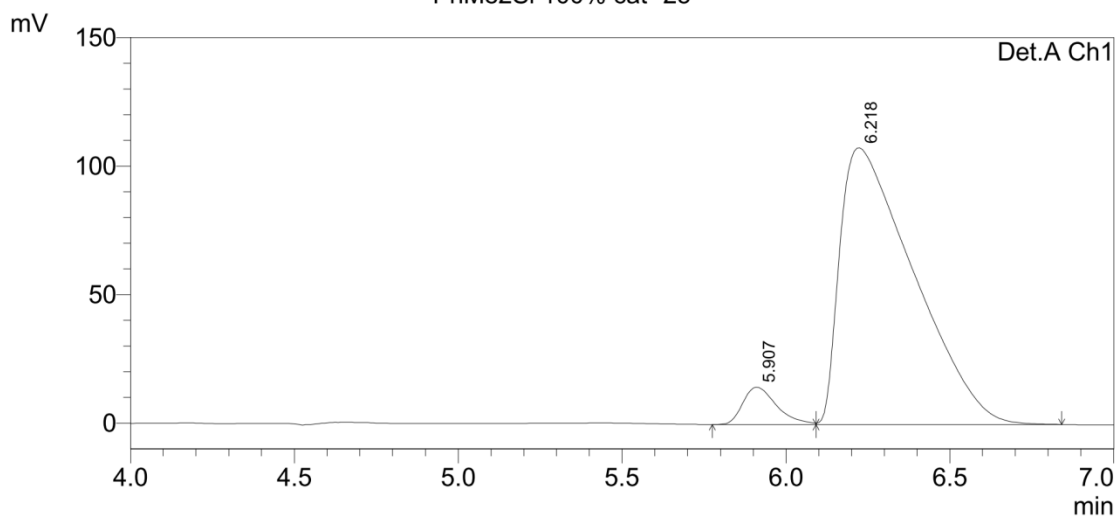
ID#	Name	Ret. Time	Area	Height
1	RT5.470	5.470	307283	35532
2	RT5.989	5.989	314168	31748



1 Det.A Ch1/ Detector A

ID#	Name	Ret. Time	Area	Height
1	RT5.344	5.344	18526	2846
2	RT5.890	5.890	488087	50510

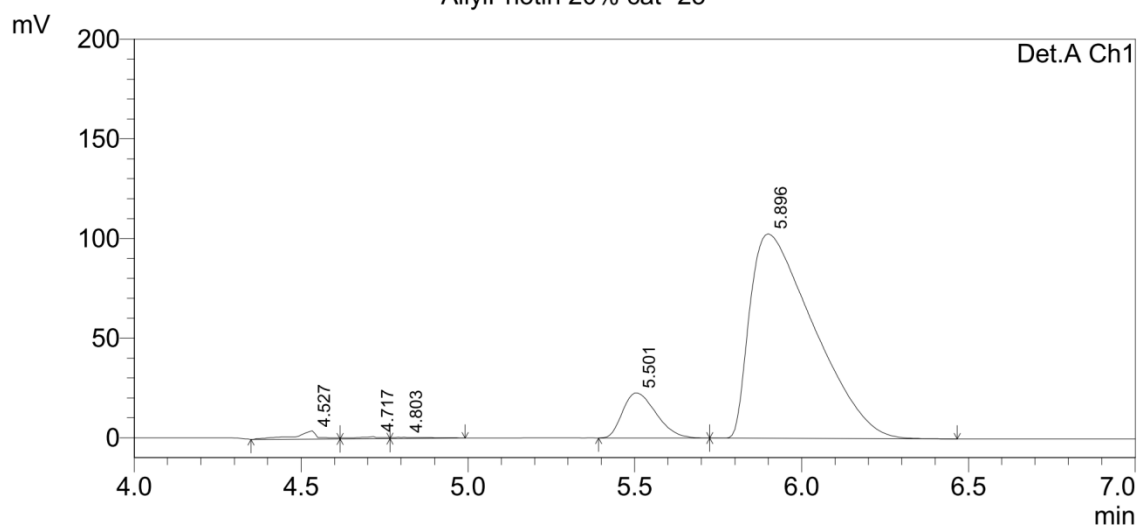
PhMe2Si 100% cat -25



1 Det.A Ch1/

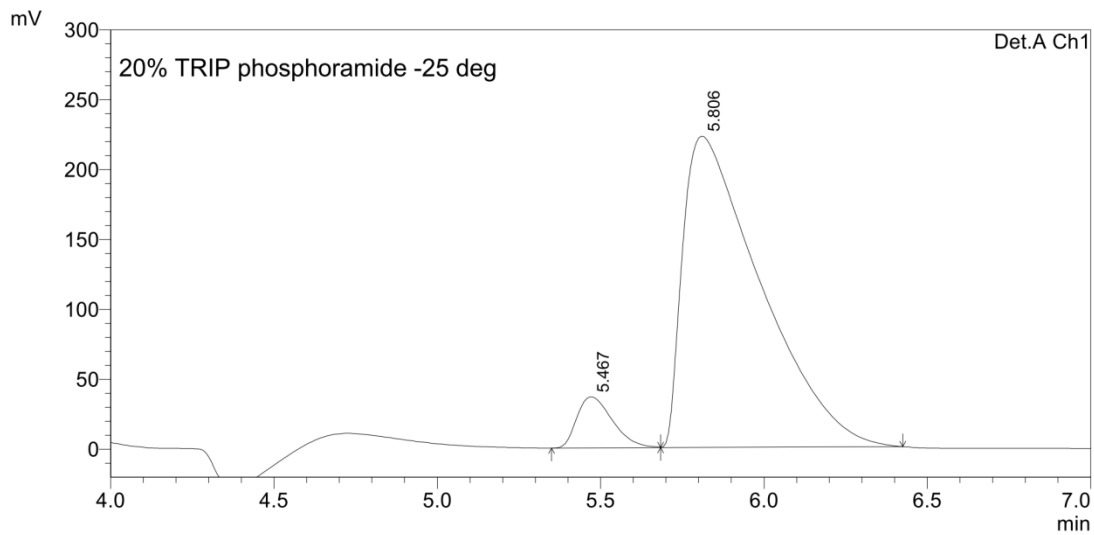
Detector A				
ID#	Name	Ret. Time	Area	Height
1	RT5.907	5.907	104114	14560
2	RT6.218	6.218	1688670	107665

AllylPh3tin 20% cat -25



1 Det.A Ch1/Detector A

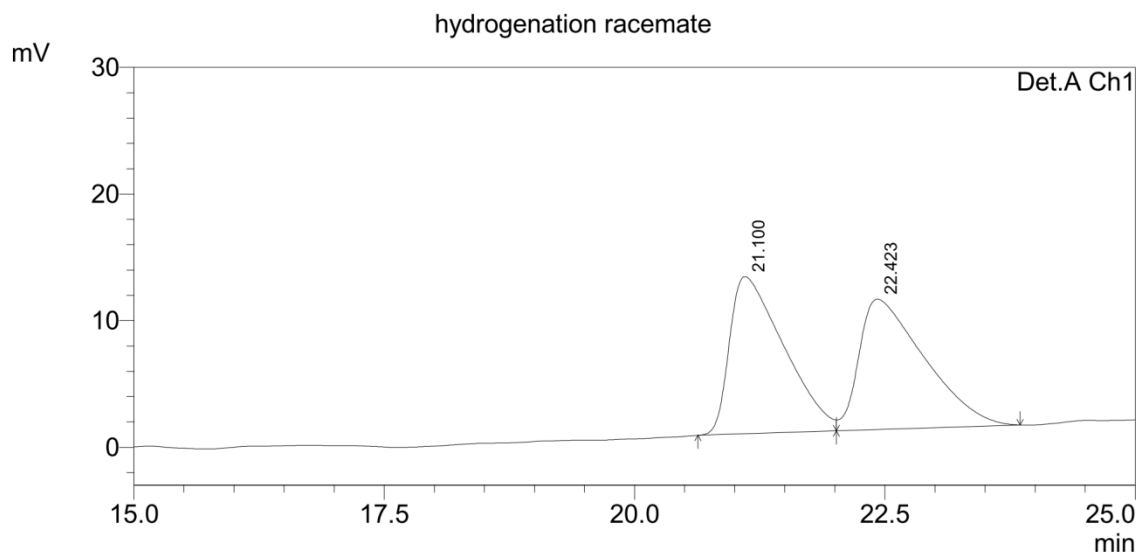
ID#	Name	Ret. Time	Area	Height
1	RT5.501	5.501	157665	22594
2	RT5.896	5.896	1370791	102575



1 Det.A Ch1 Detector A

ID#	Name	Ret. Time	Area	Height
1	RT5.467	5.467	277303	36576
2	RT5.806	5.806	3696651	222827

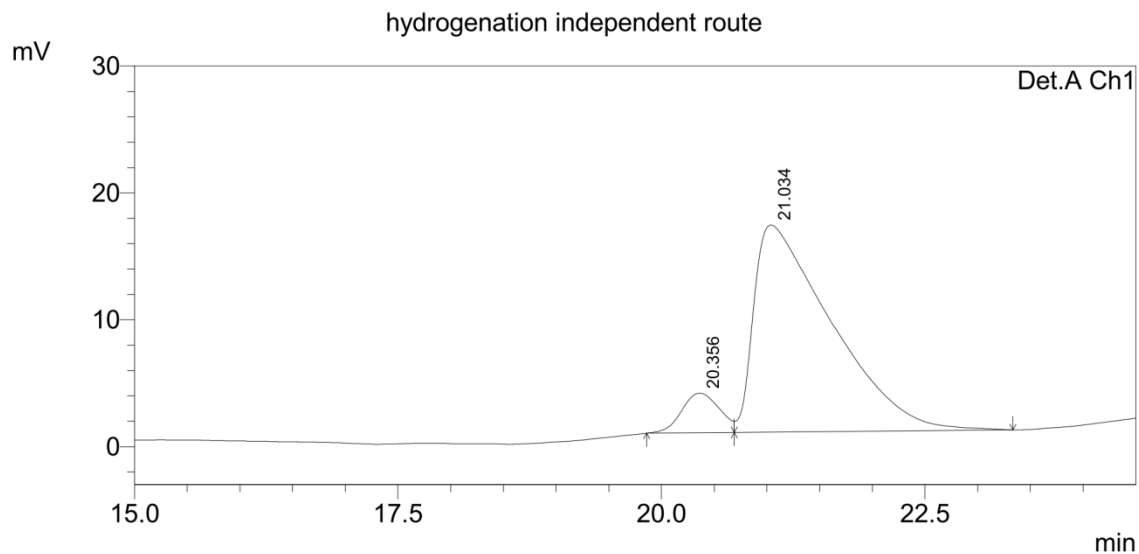
Hydrogenation product racemic mixture (1.0 mL/min, 80% Methanol in water)



1 Det.A Ch1/

Detector A					
ID#	Name	Ret. Time	Area	Height	
1	RT21.100	21.100	466475	12416	
2	RT22.423	22.423	467034	10307	

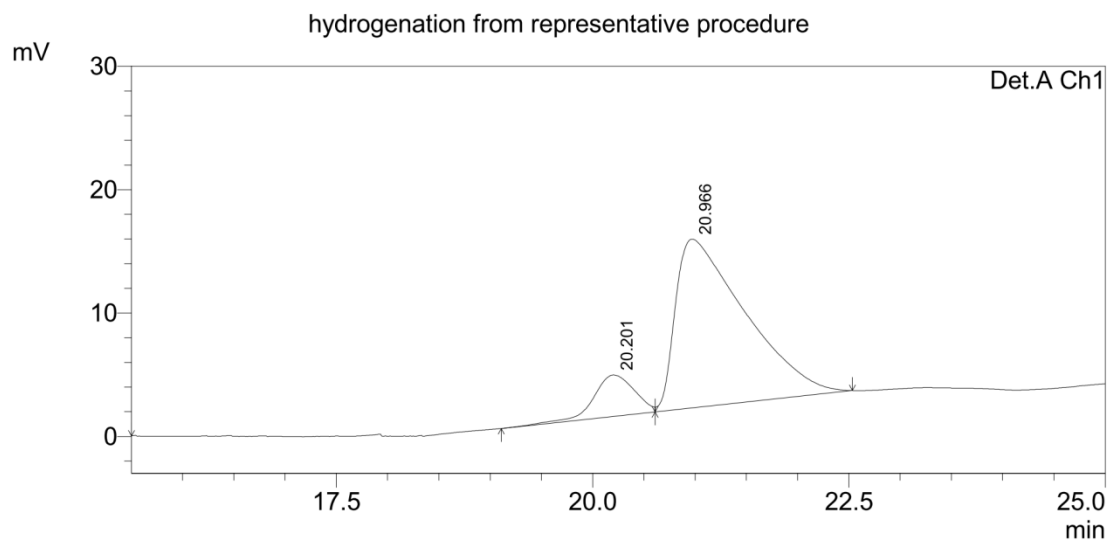
Hydrogenation product from independent route (Brown's reaction)



1 Det.A Ch1/

Detector A					
ID#	Name	Ret. Time	Area	Height	
1	RT20.356	20.356	77856	3118	
2	RT21.034	21.034	837583	16323	

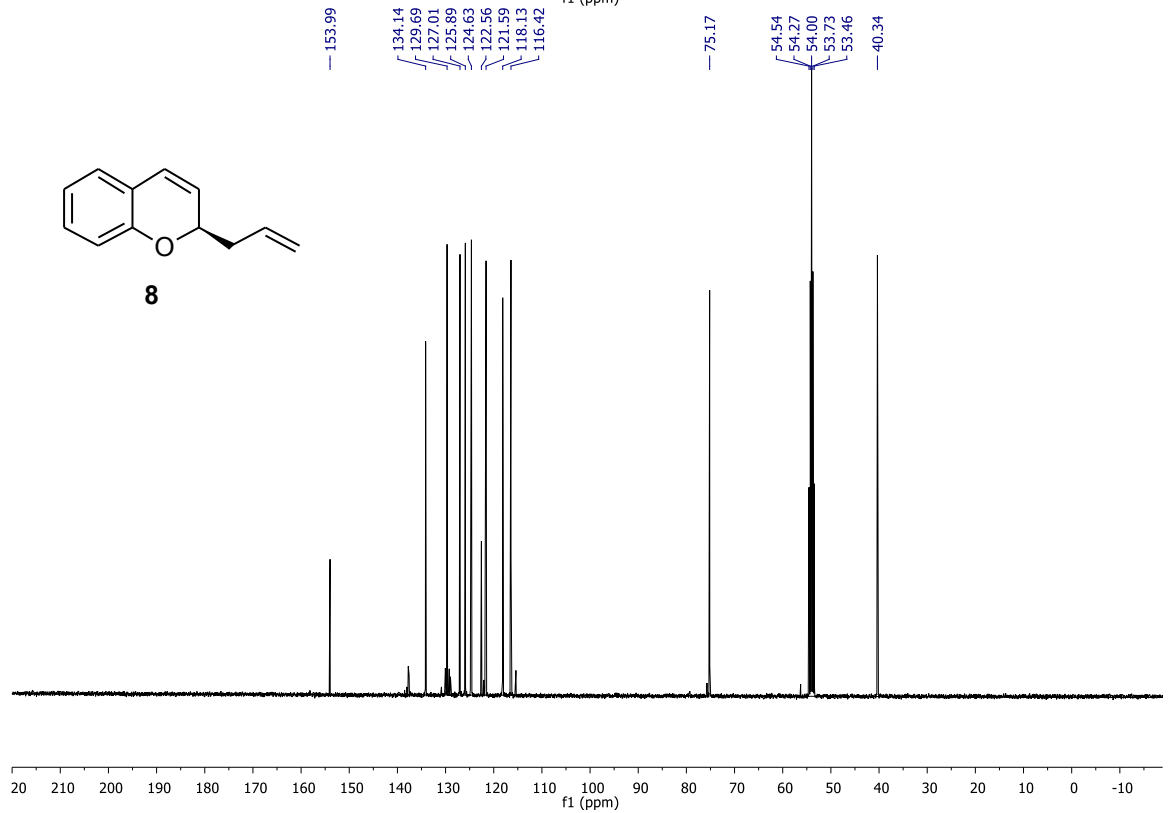
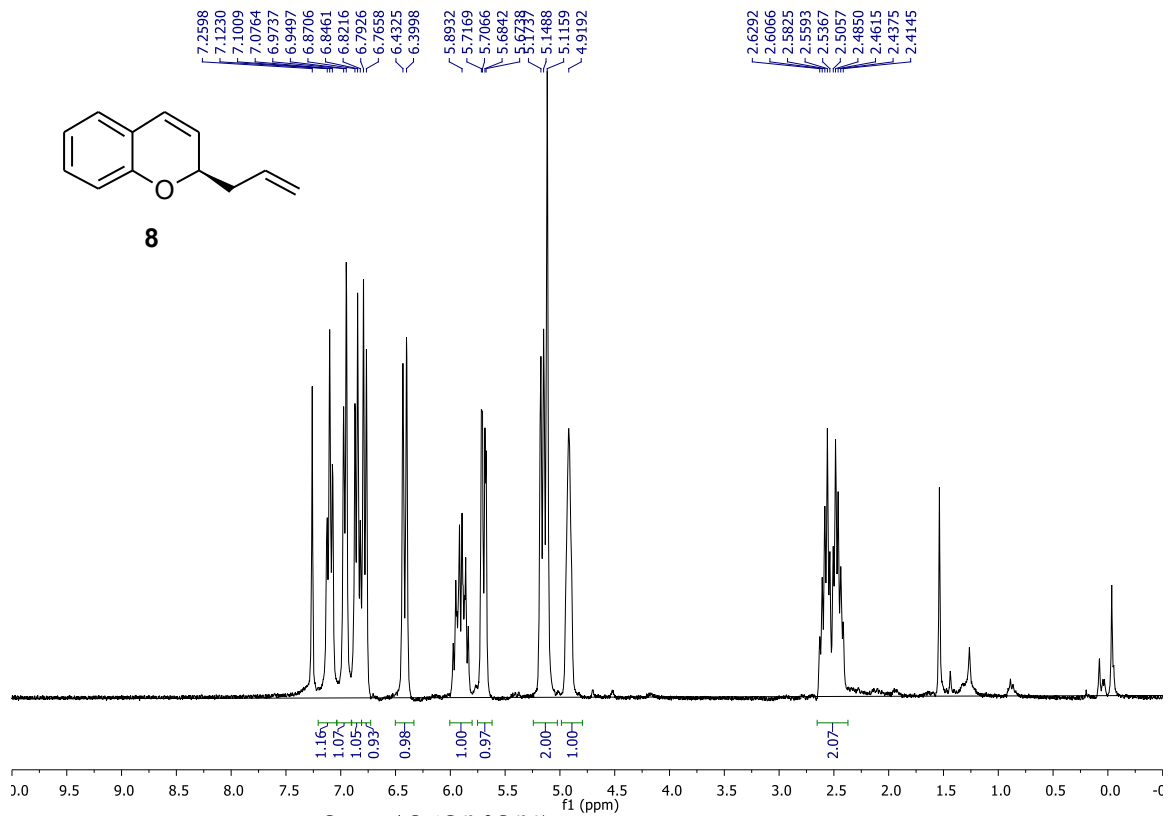
Hydrogenation product from representative procedure

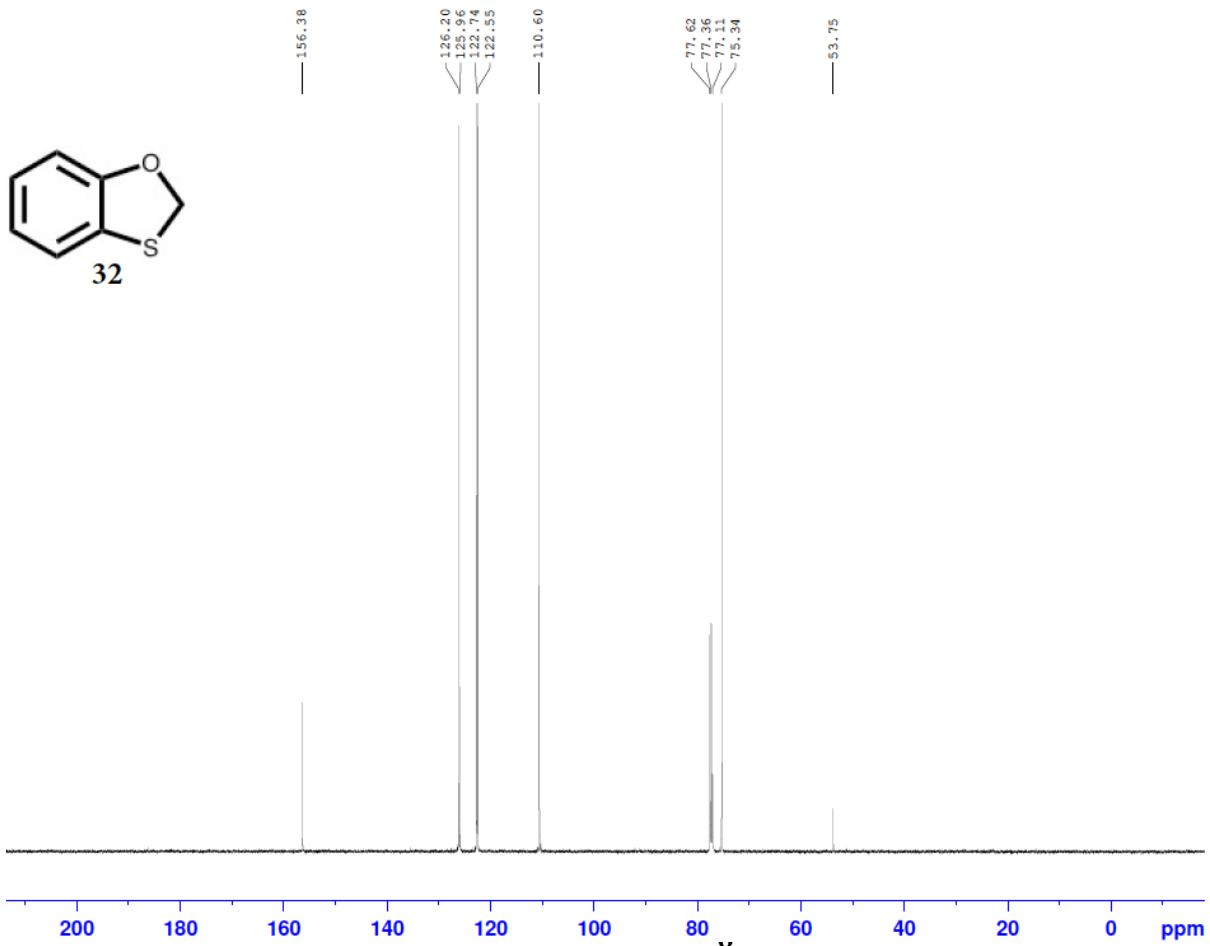
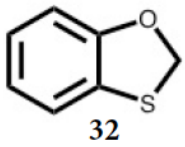
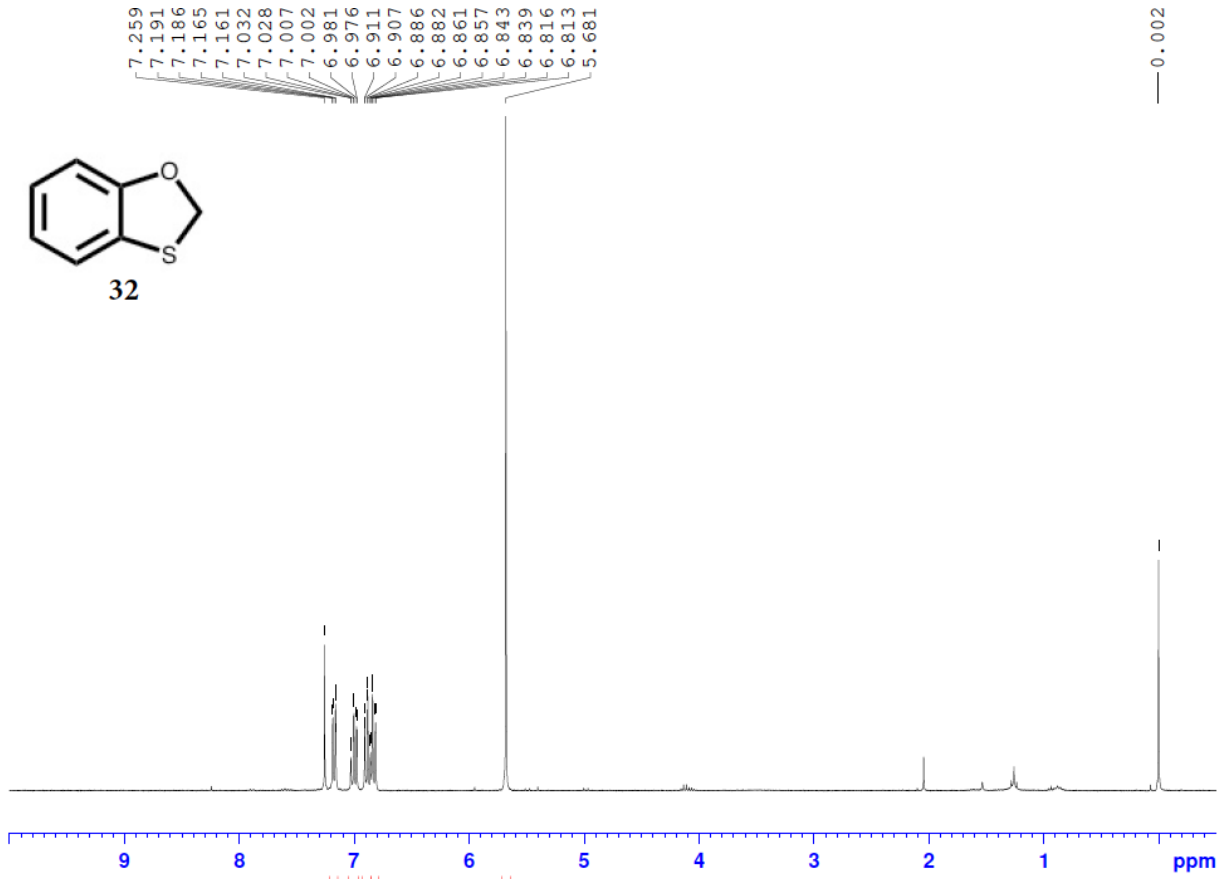
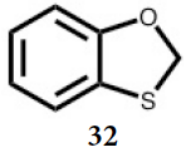


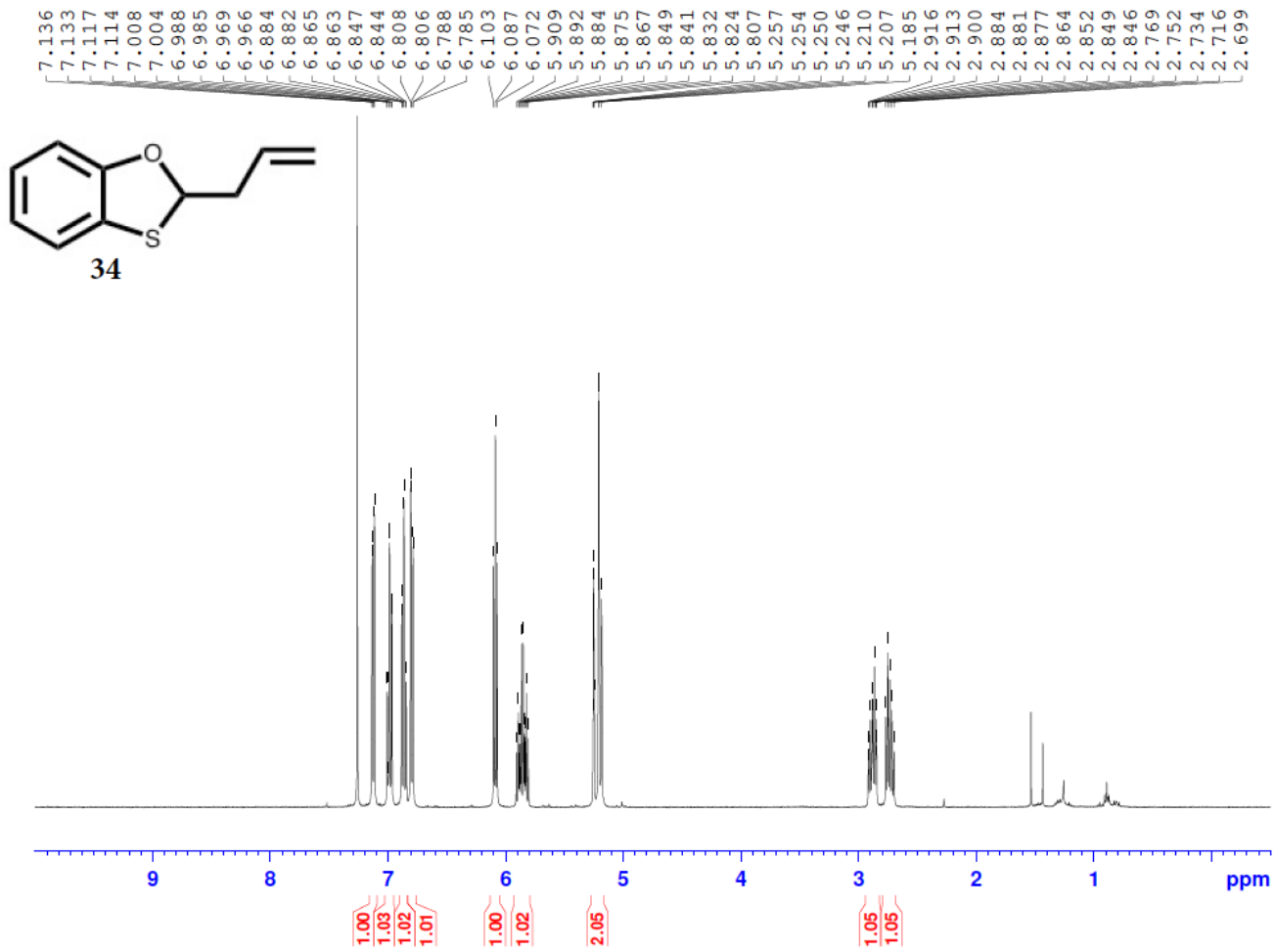
1 Det.A Ch1/

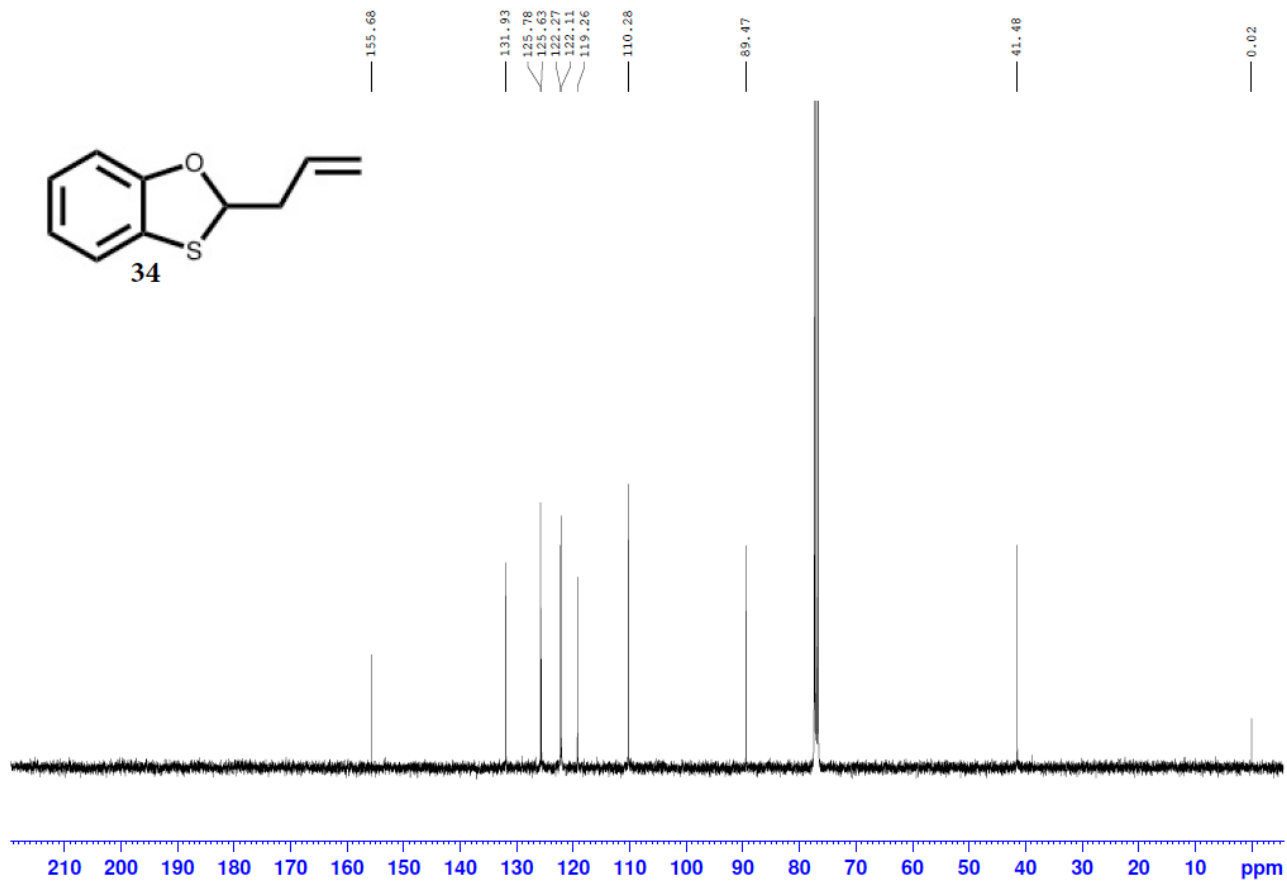
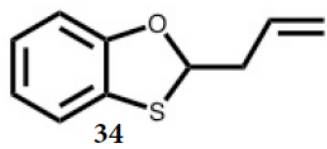
Detector A

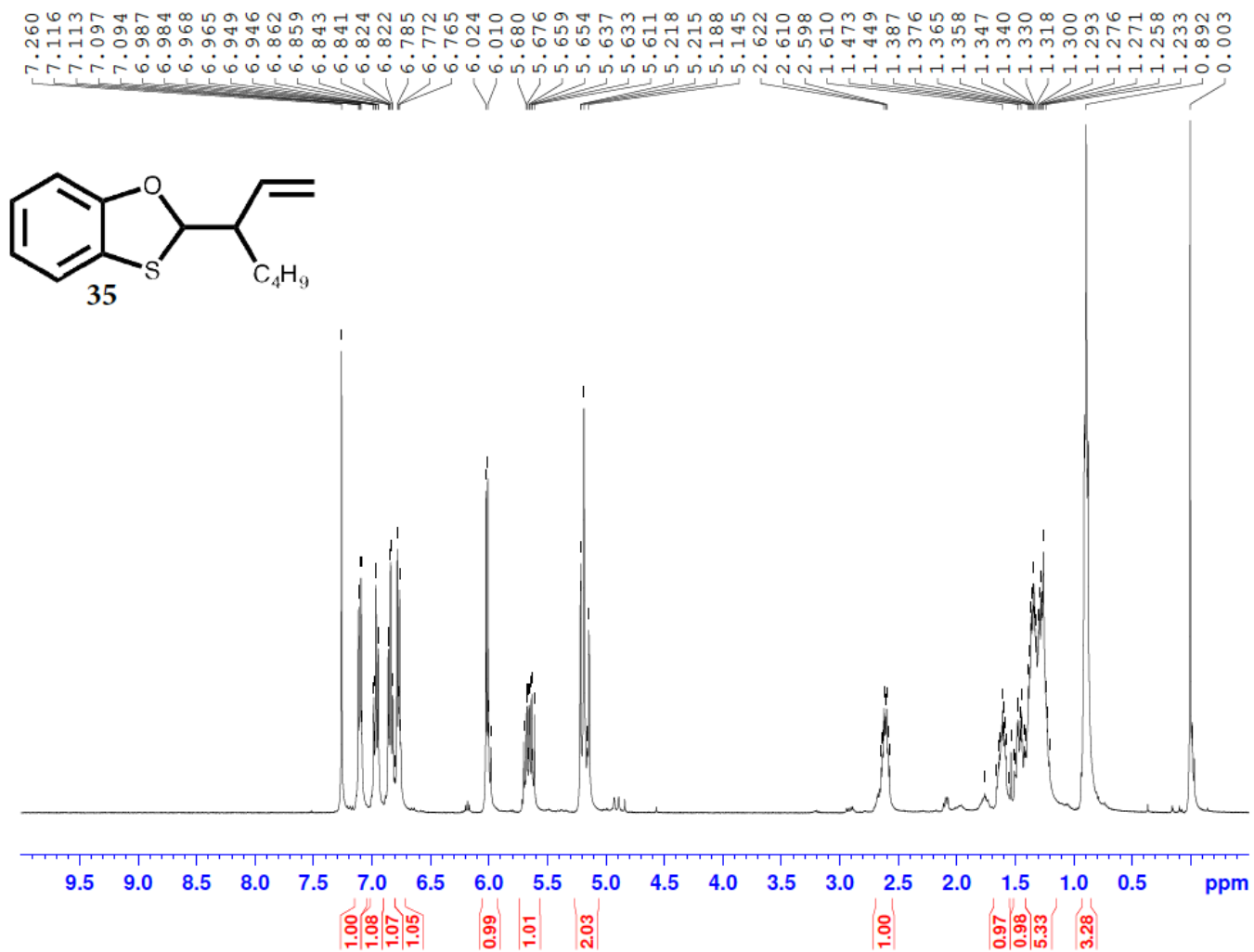
ID#	Name	Ret. Time	Area	Height
1	RT20.201	20.201	92597	3355
2	RT20.966	20.966	645291	13683

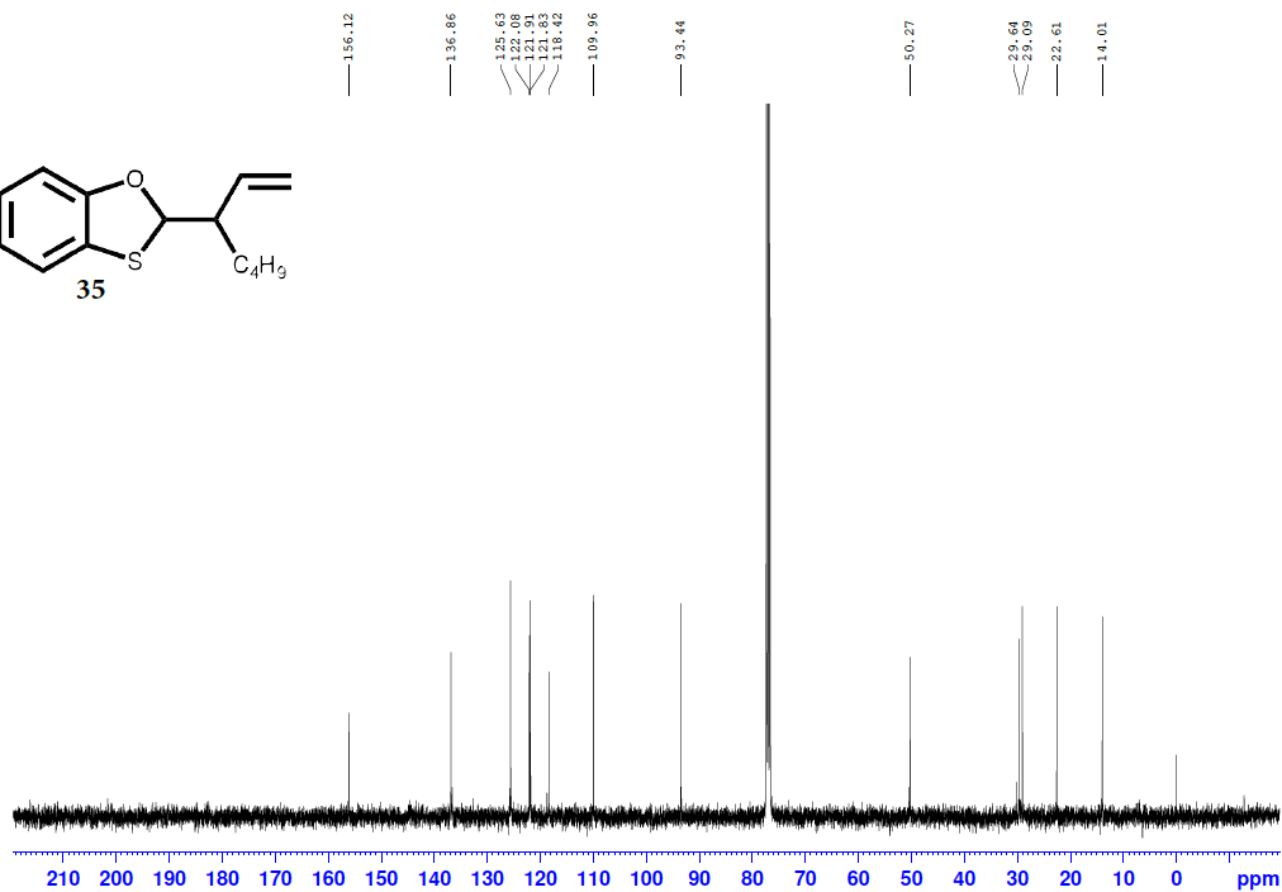
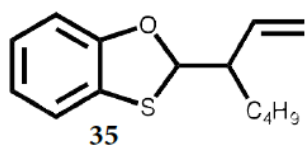


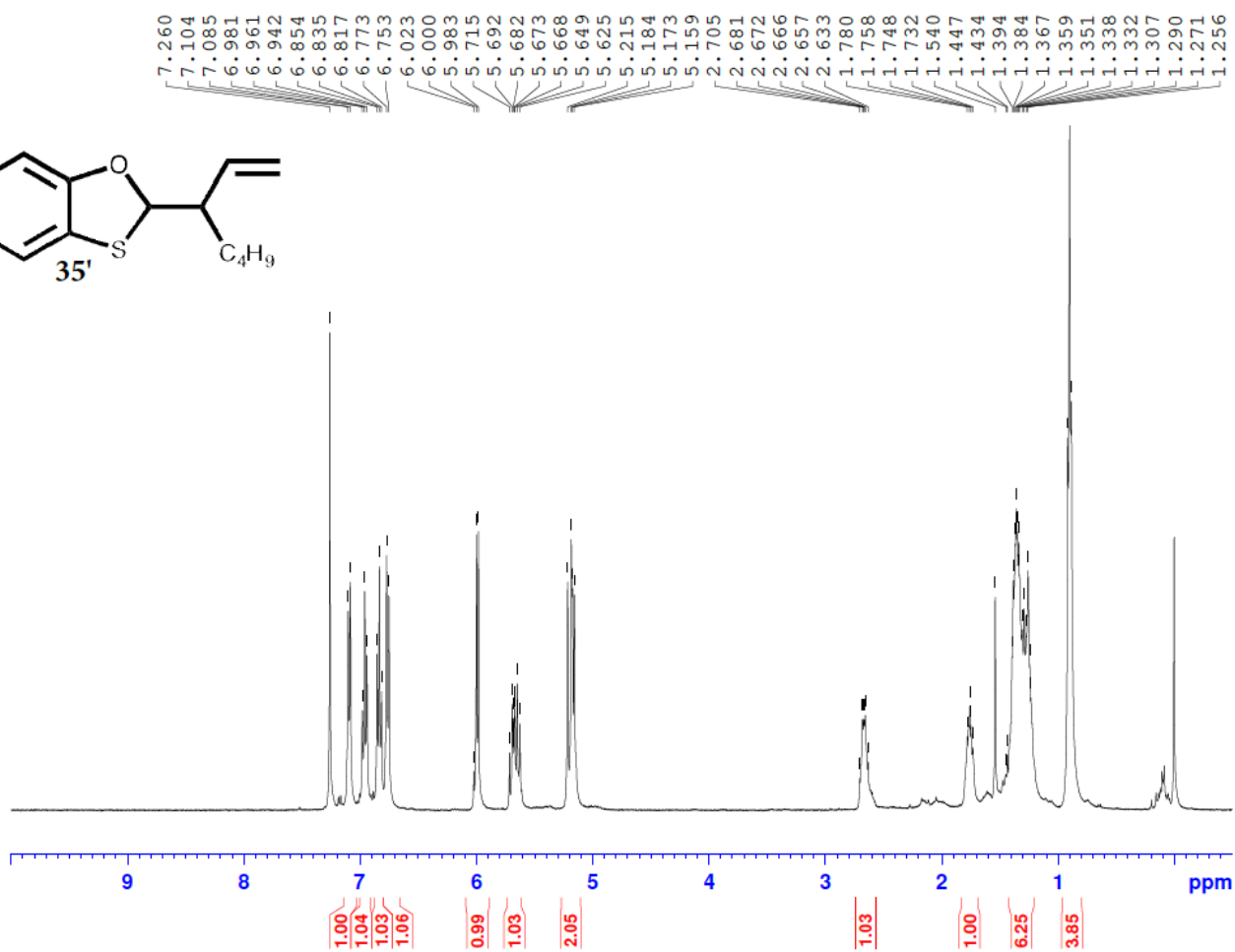
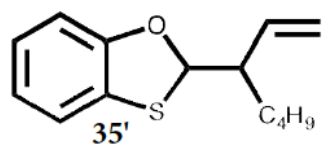


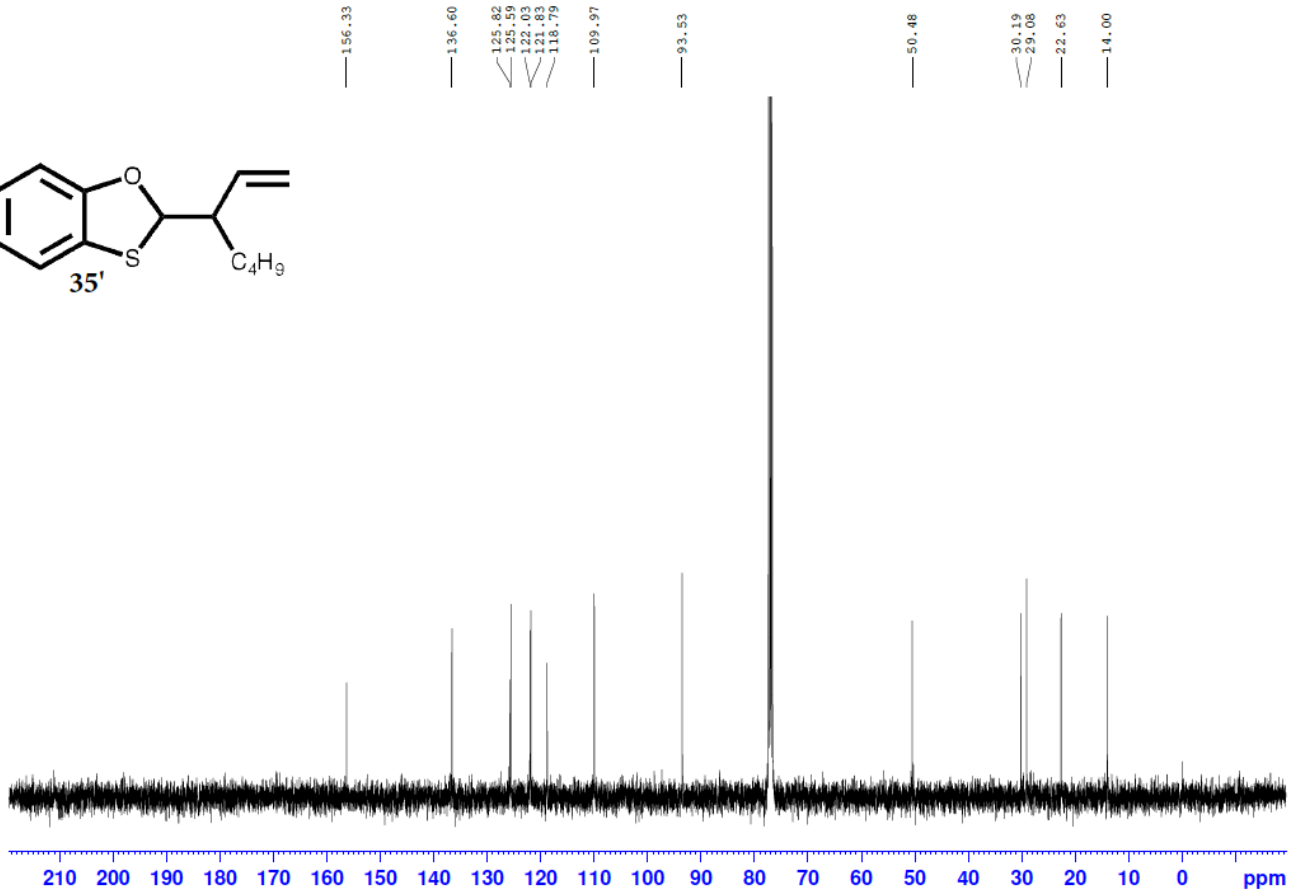
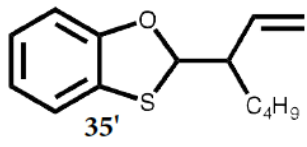


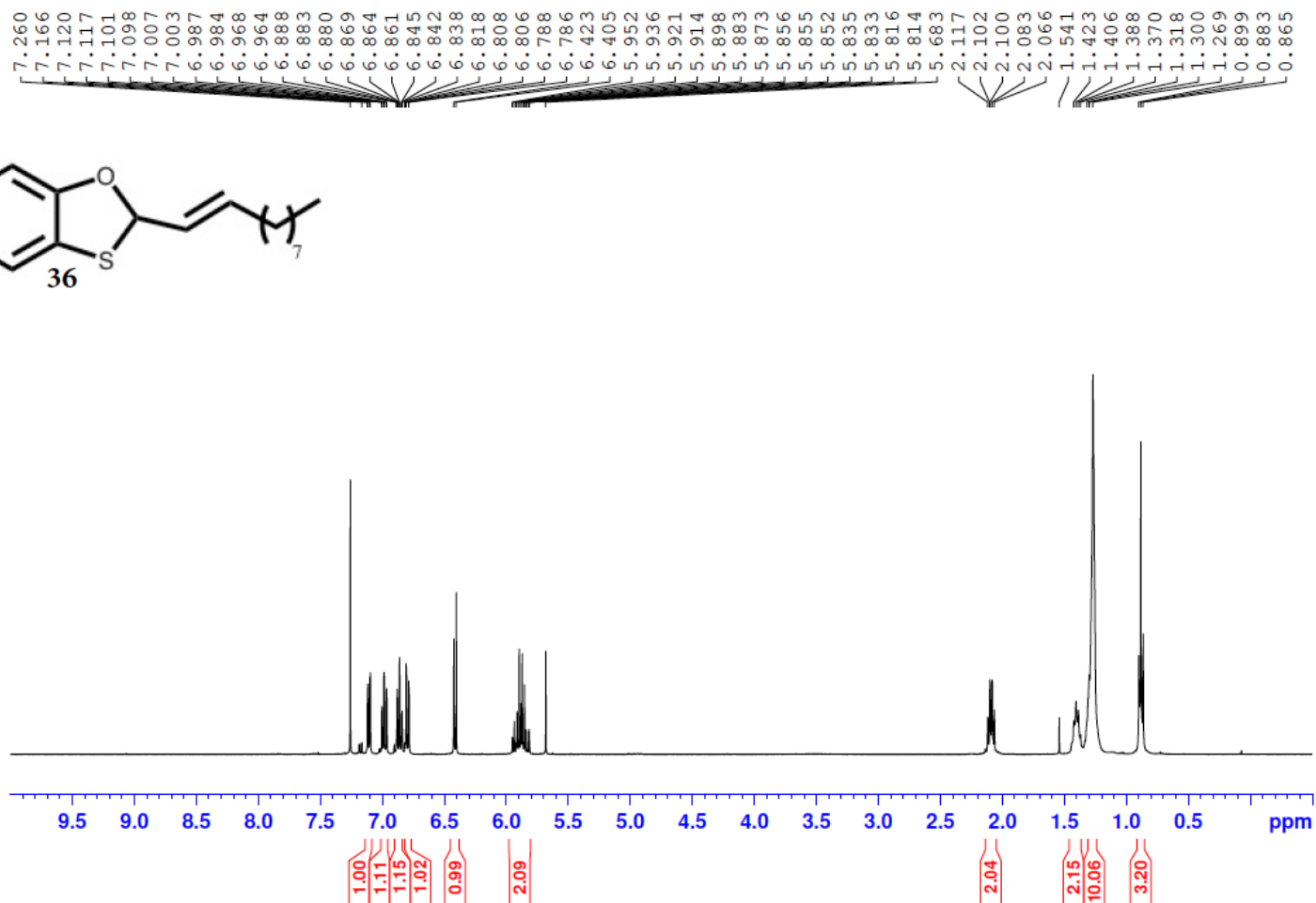
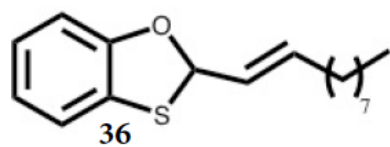


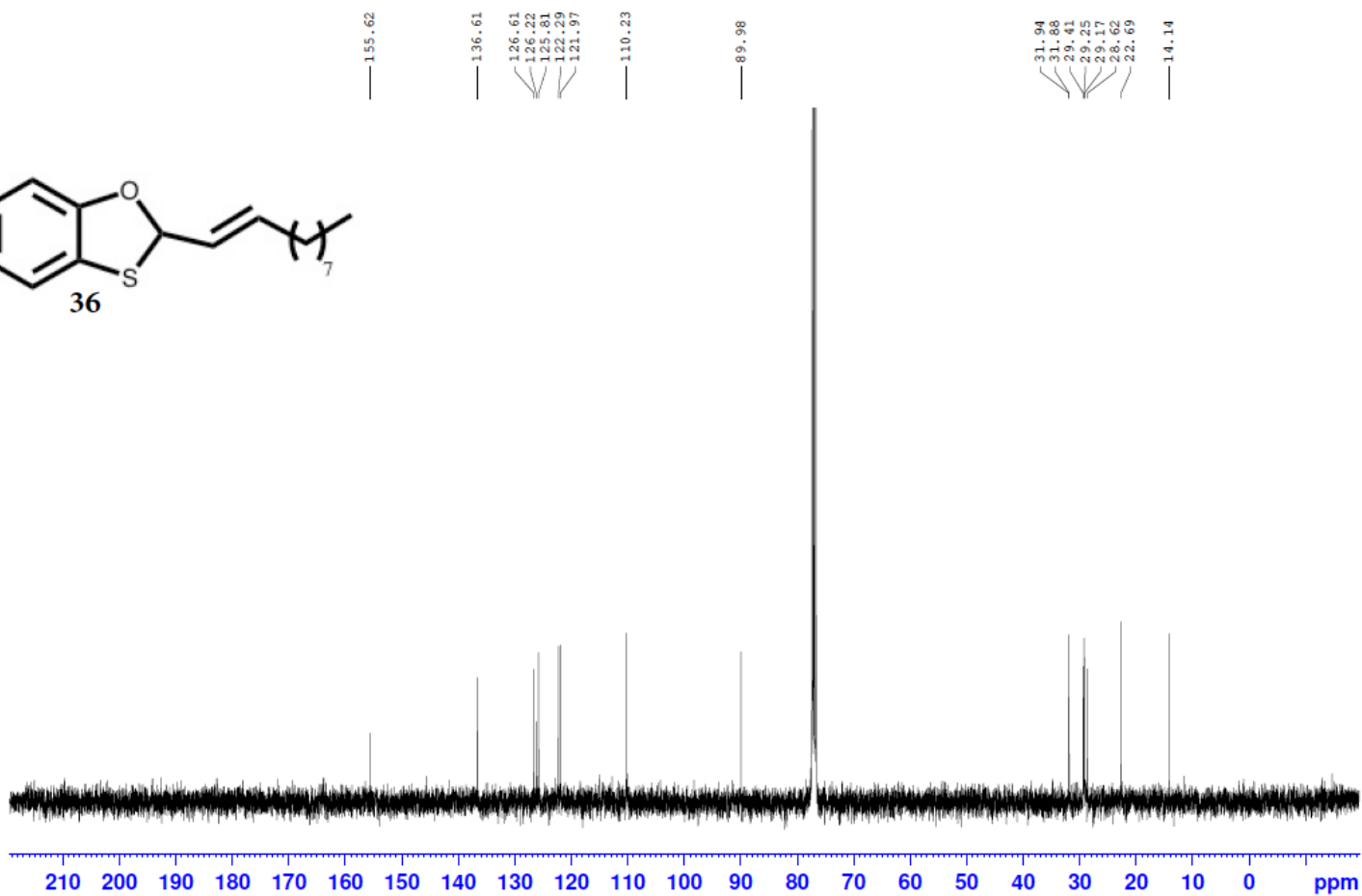
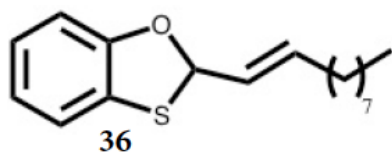


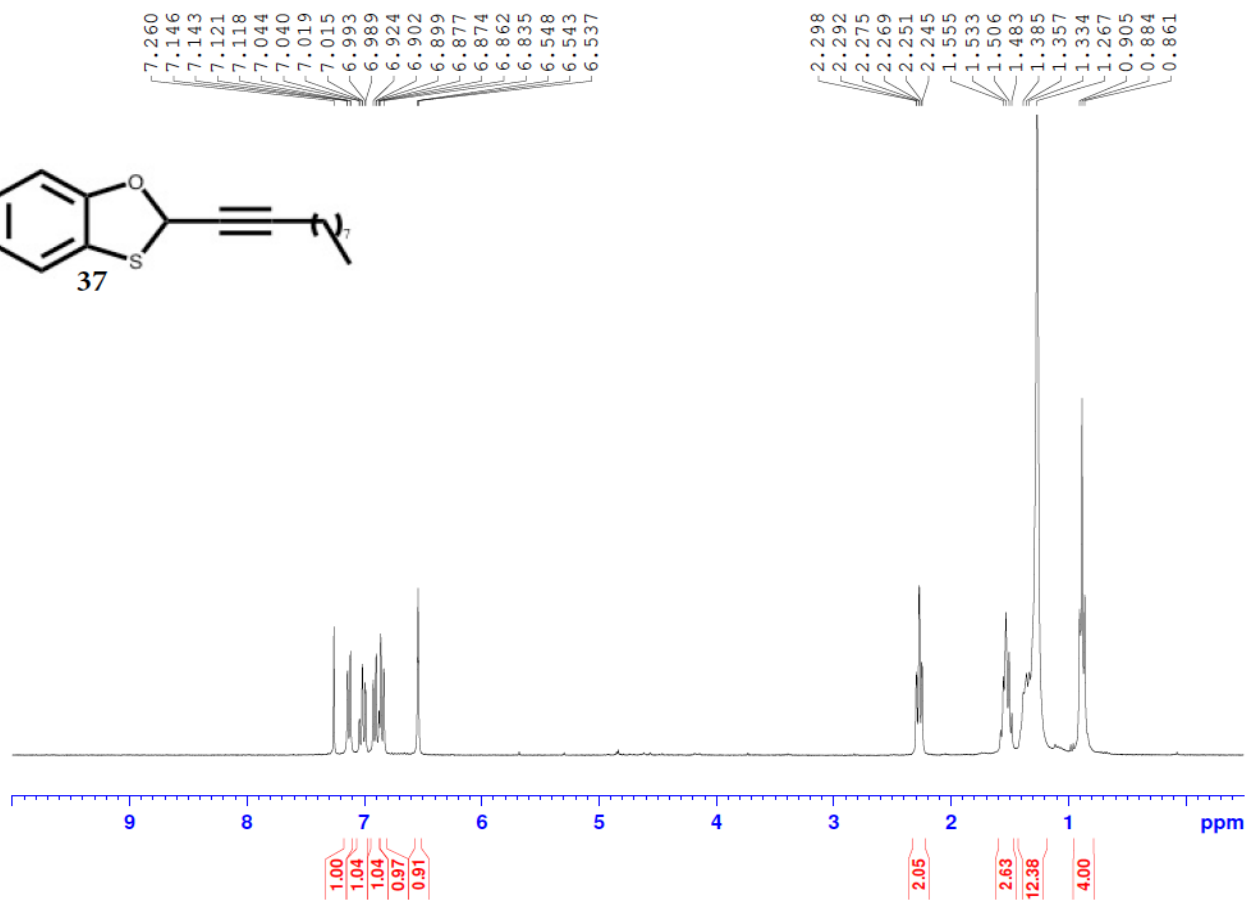
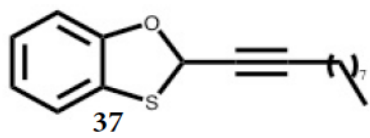


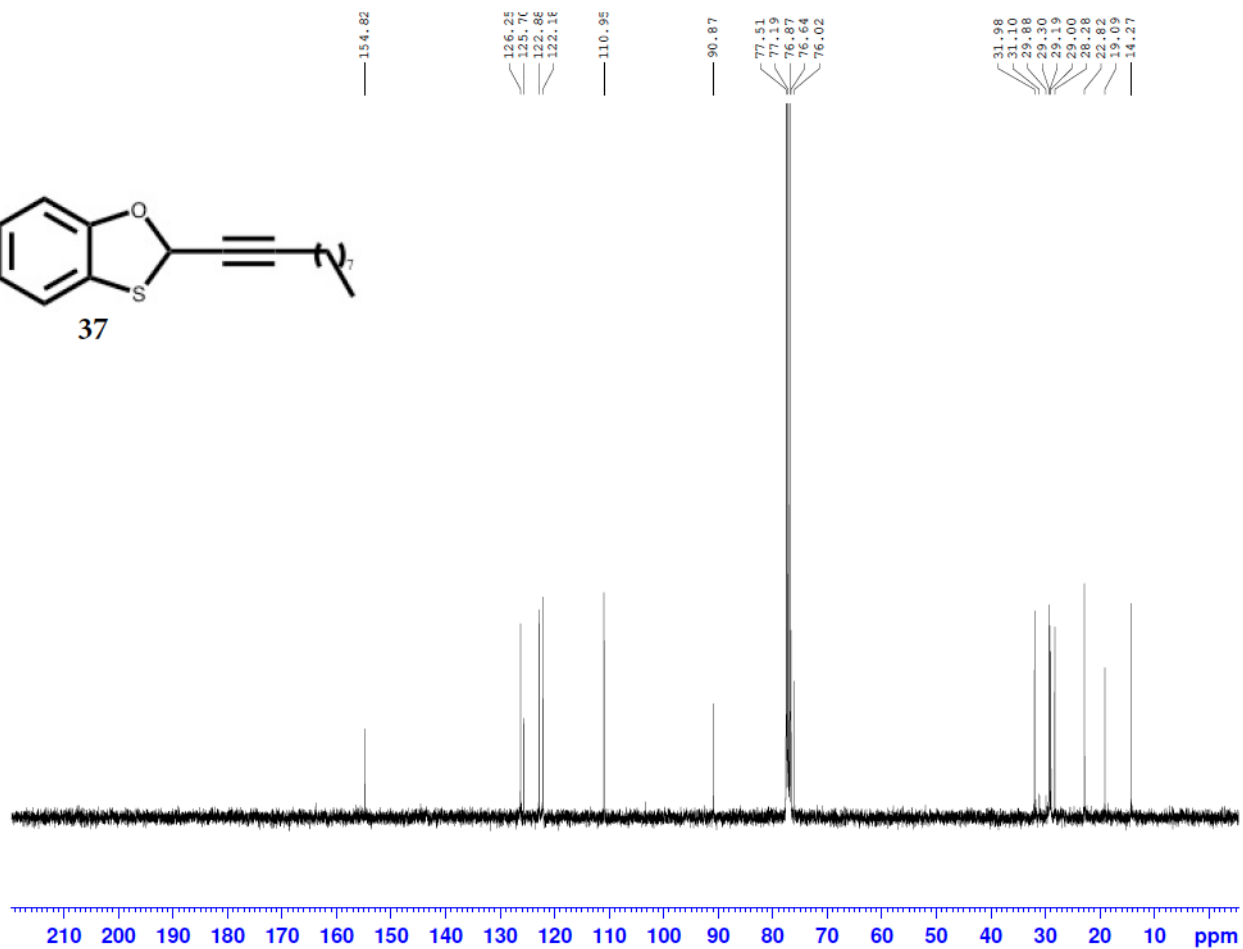
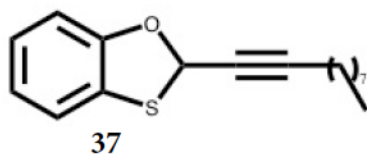


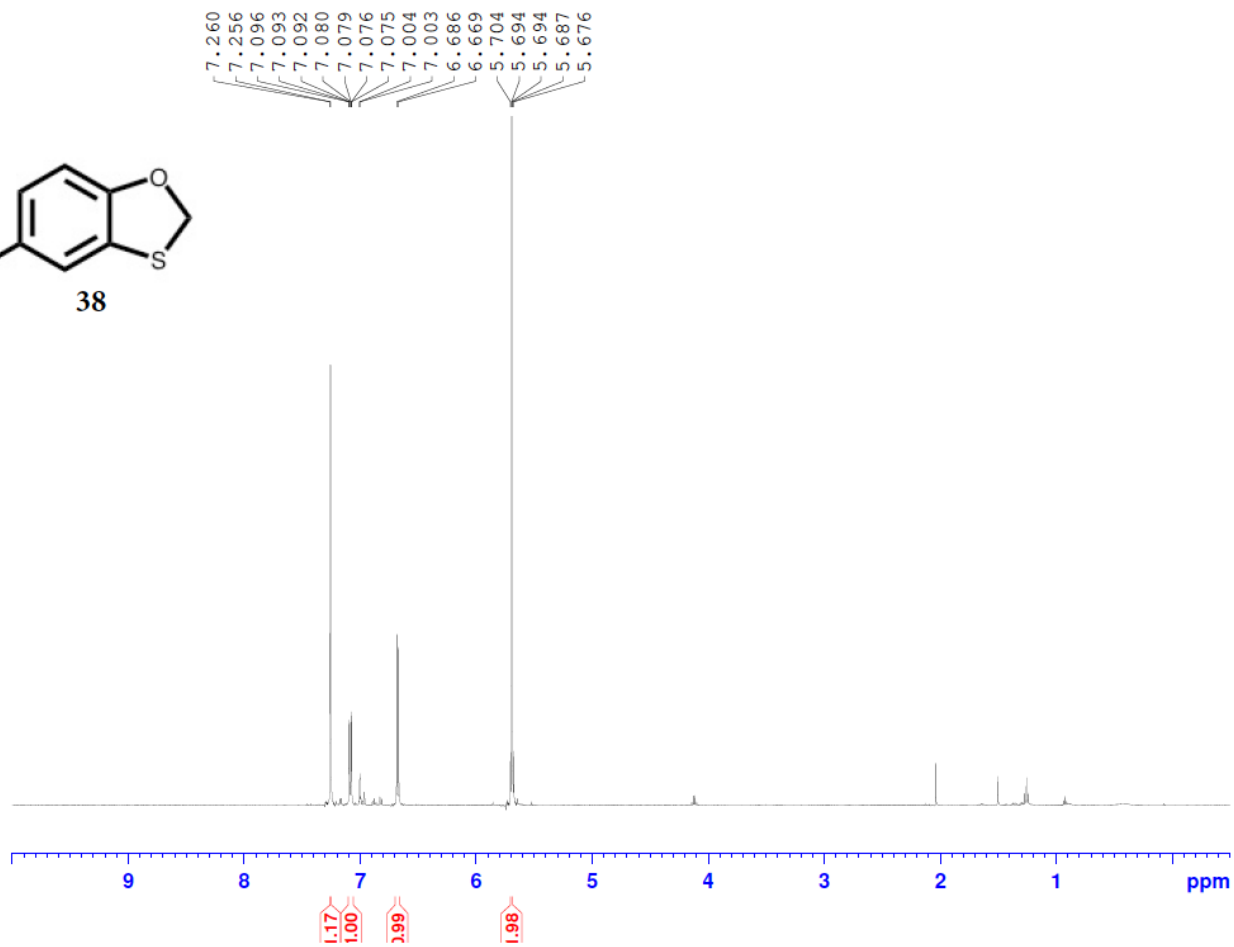
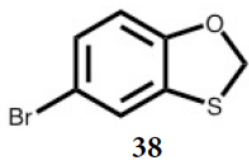


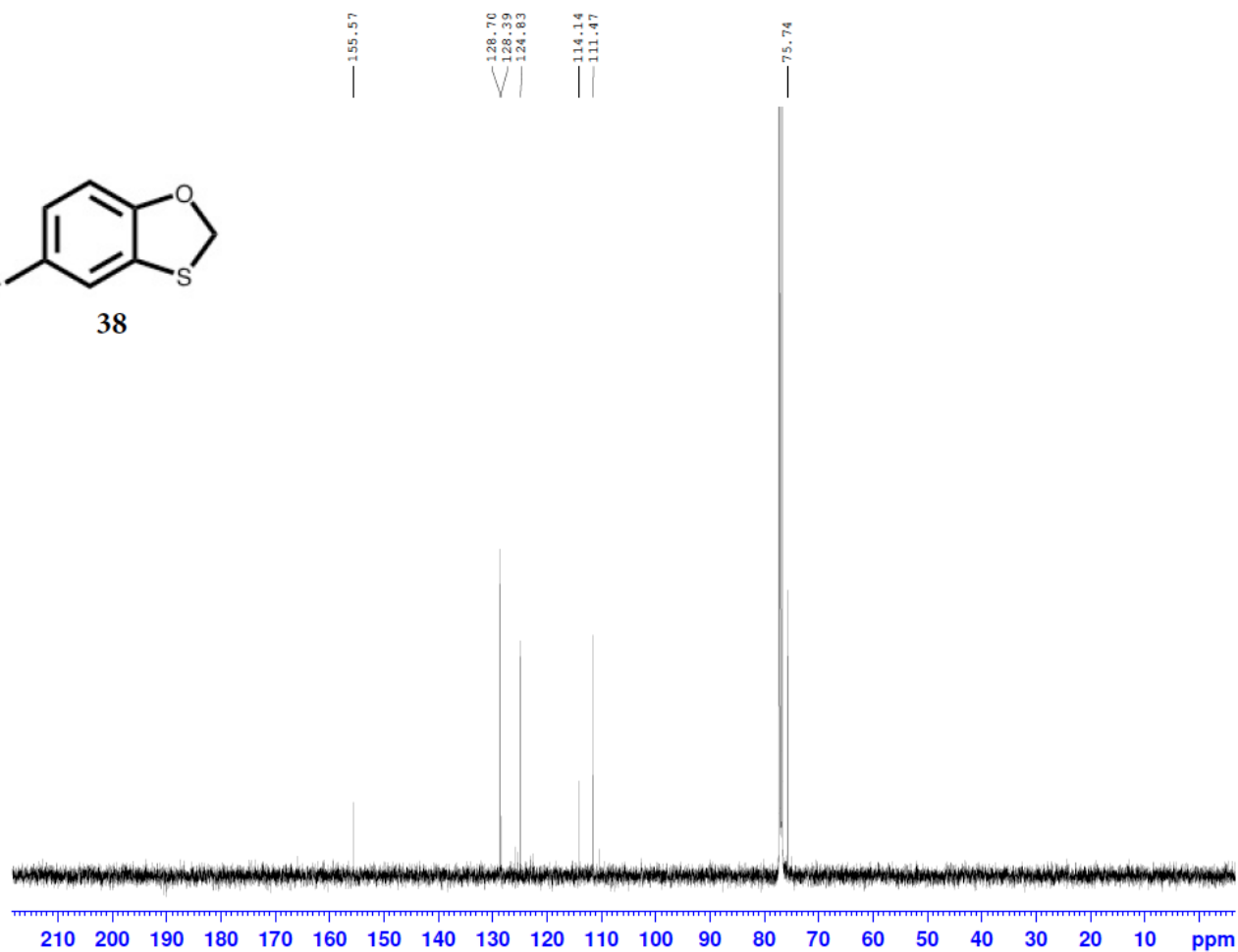
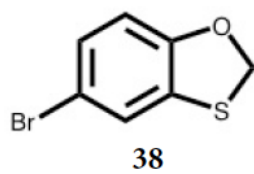


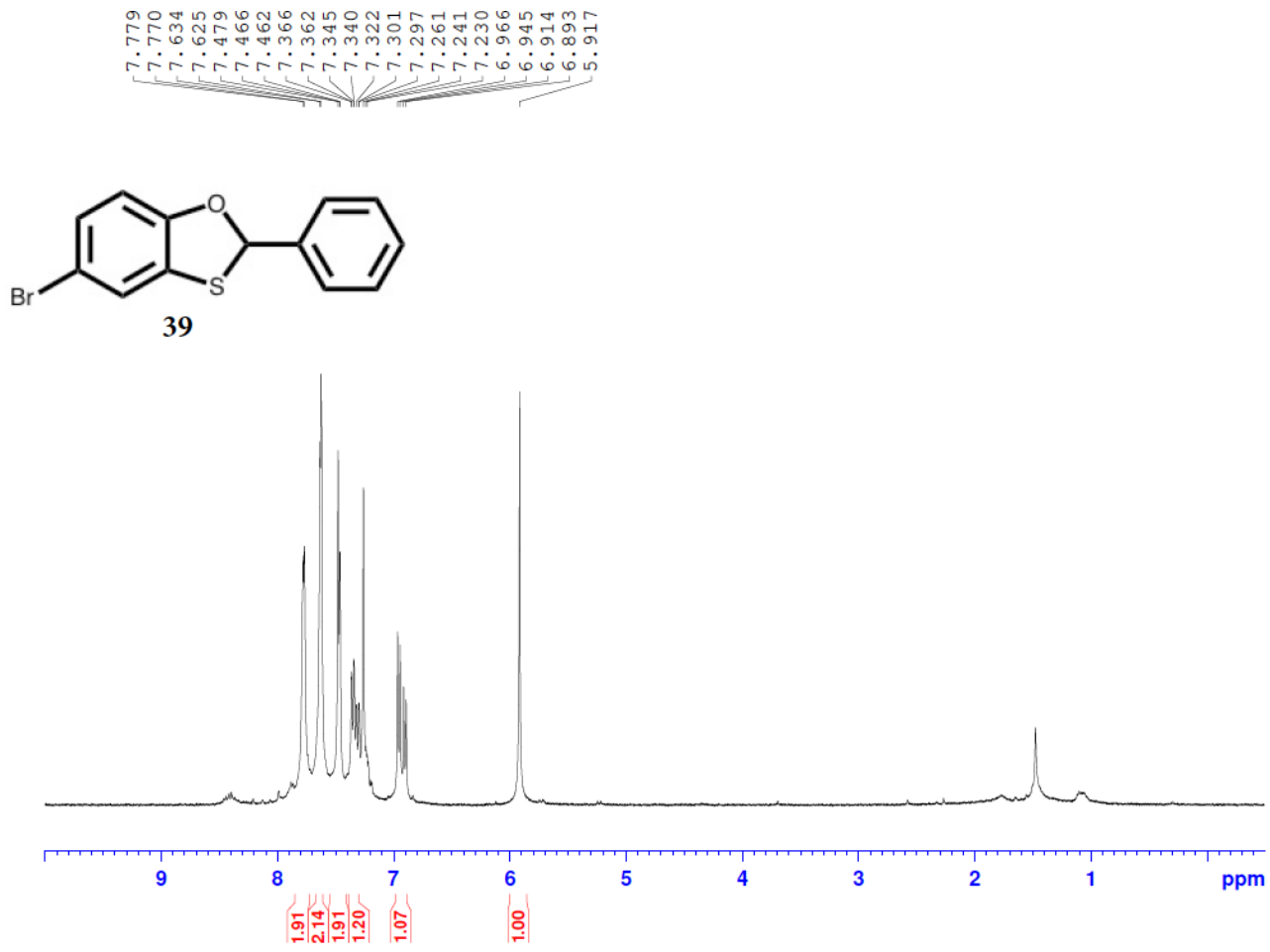


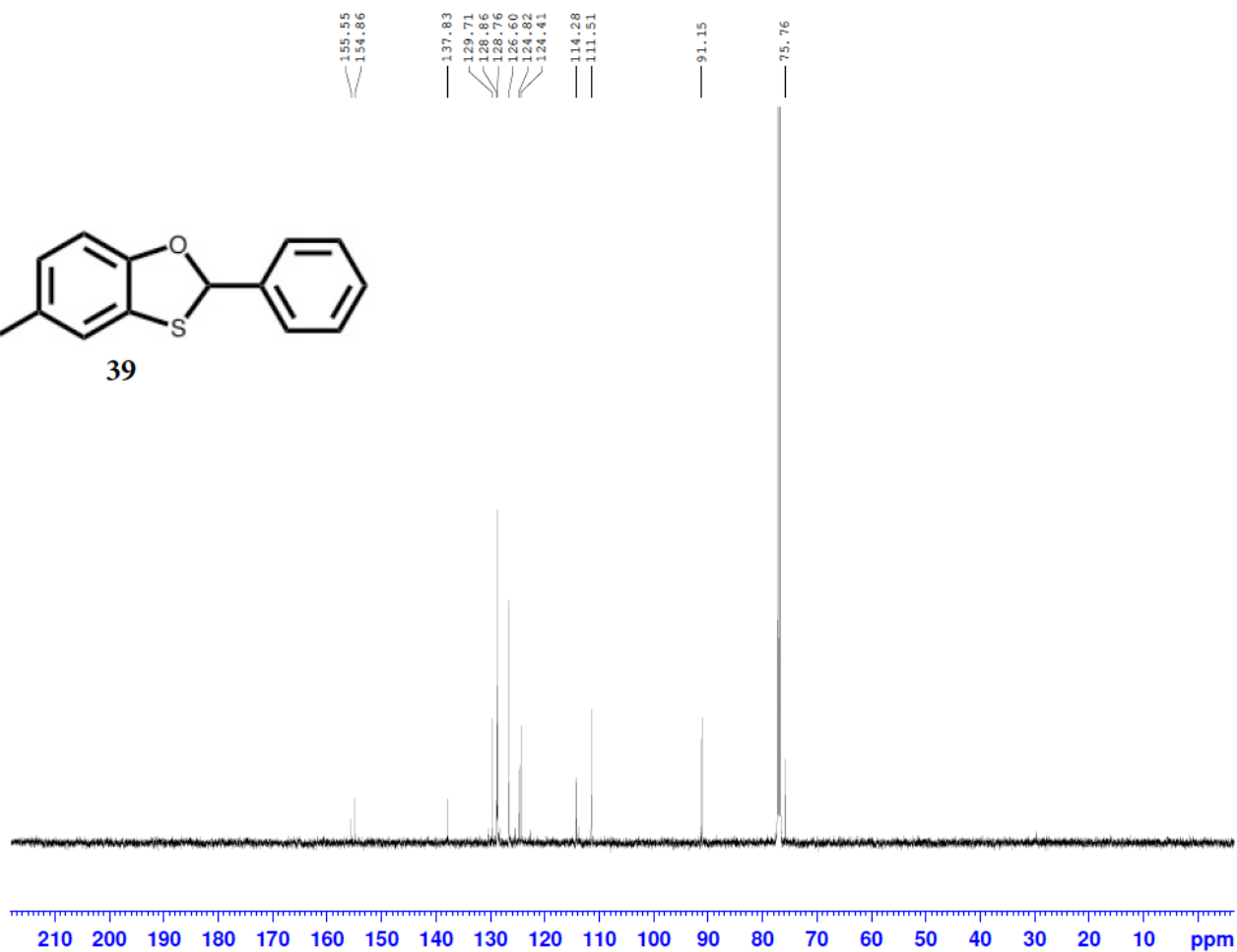
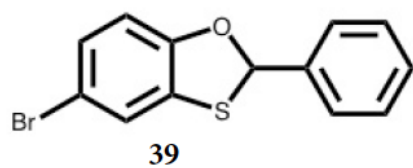


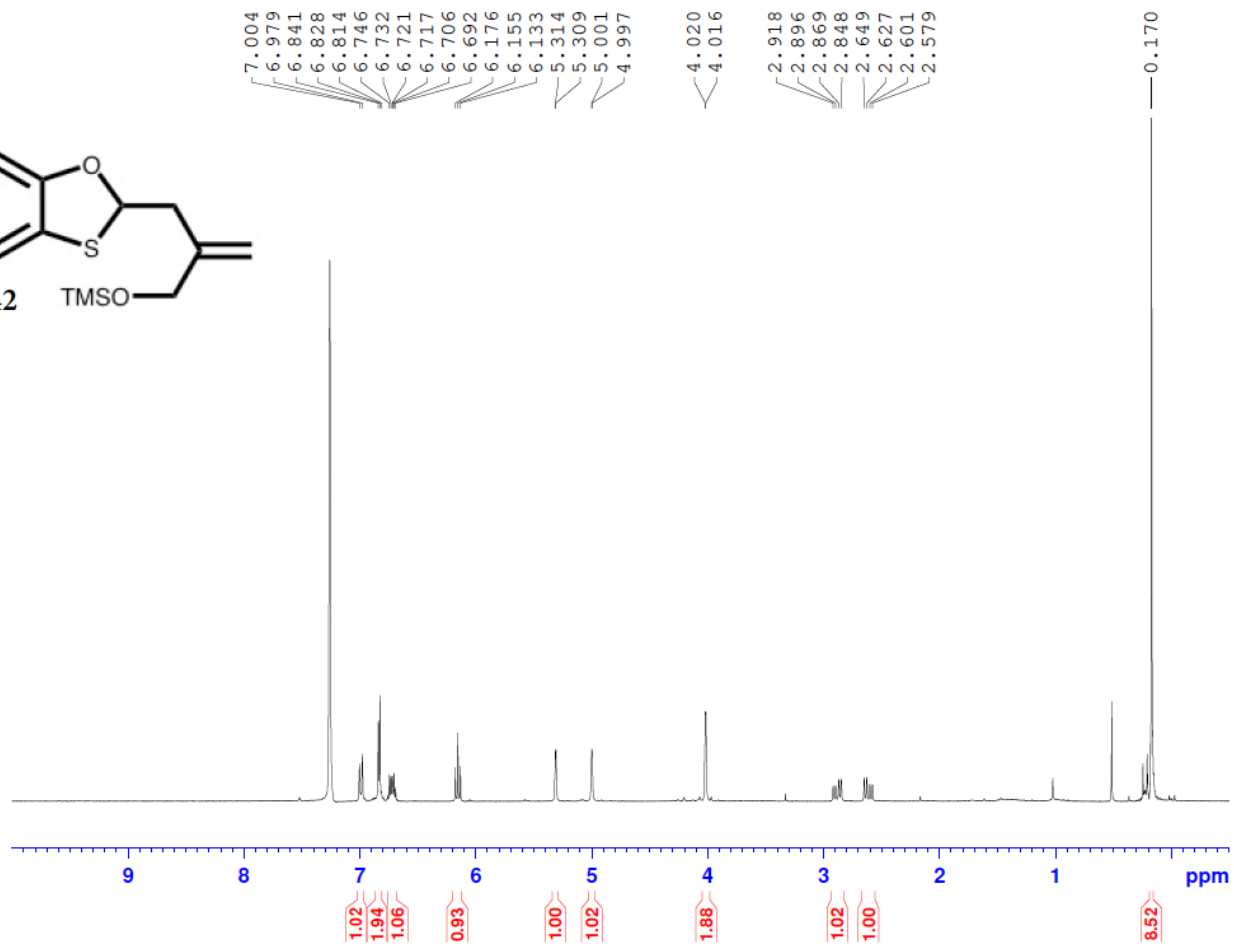
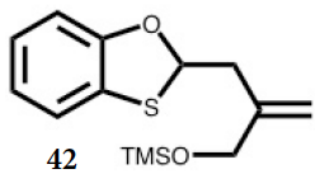


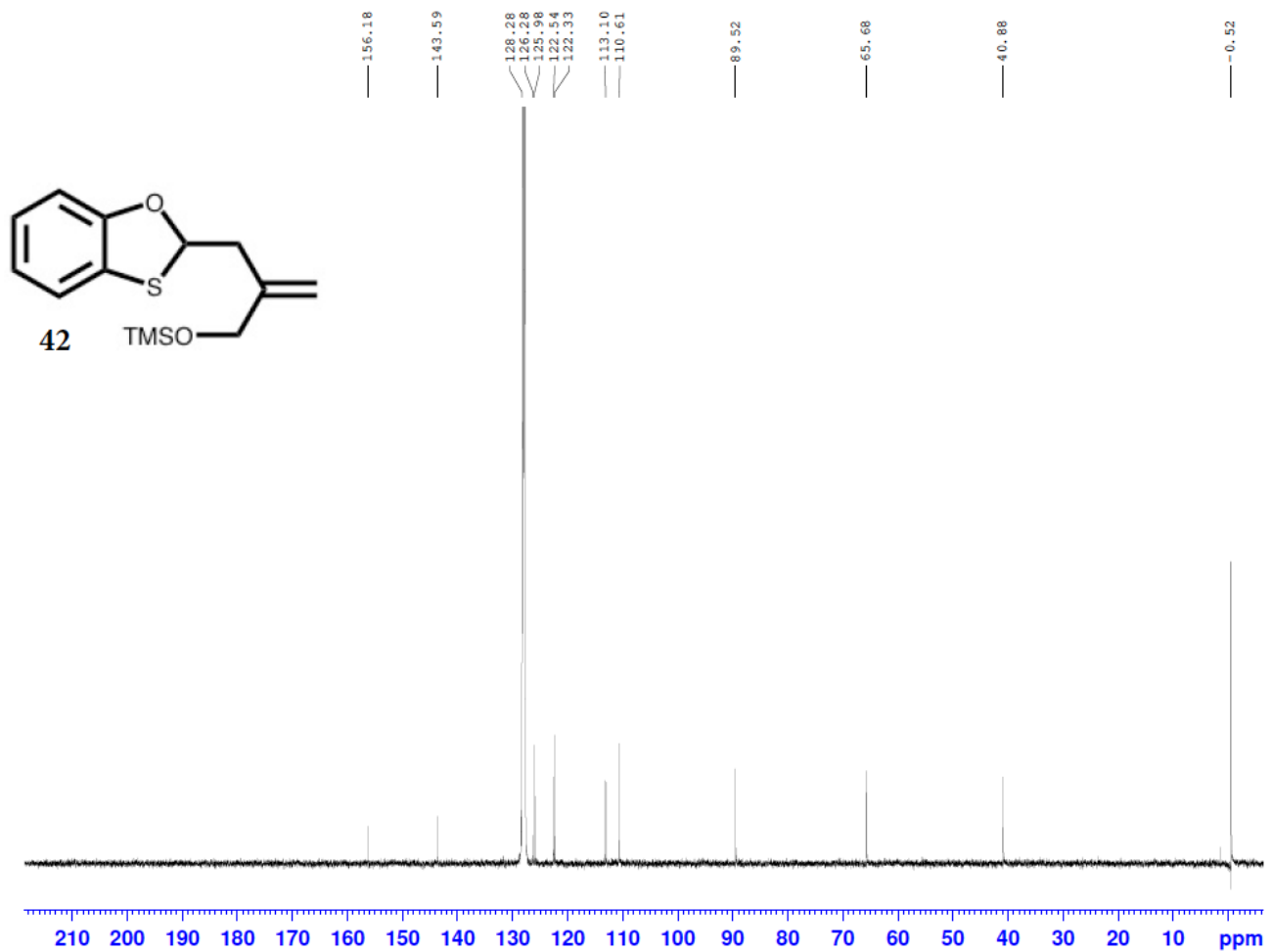


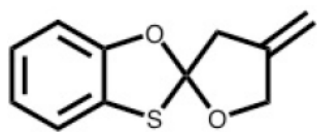












43

