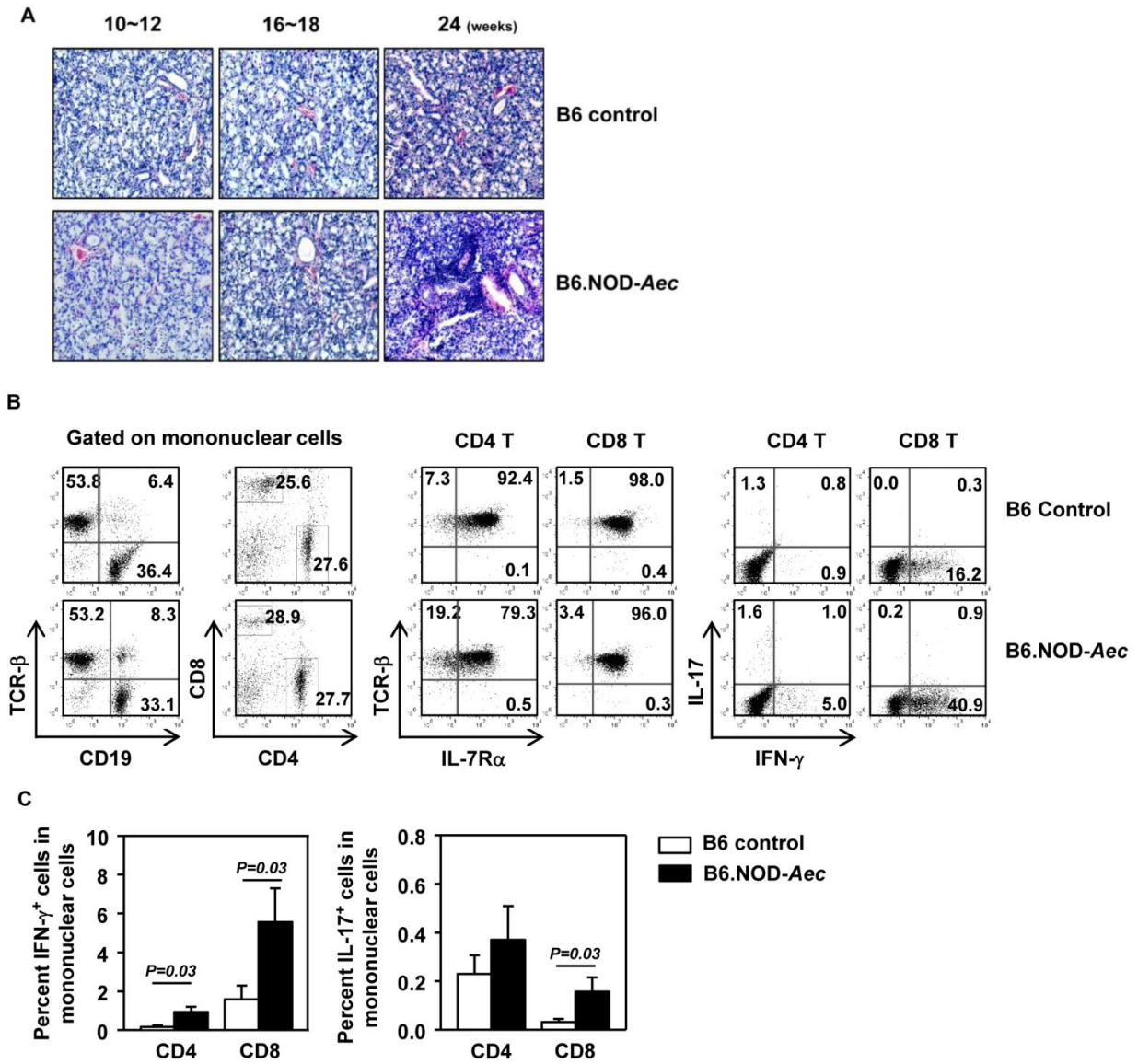
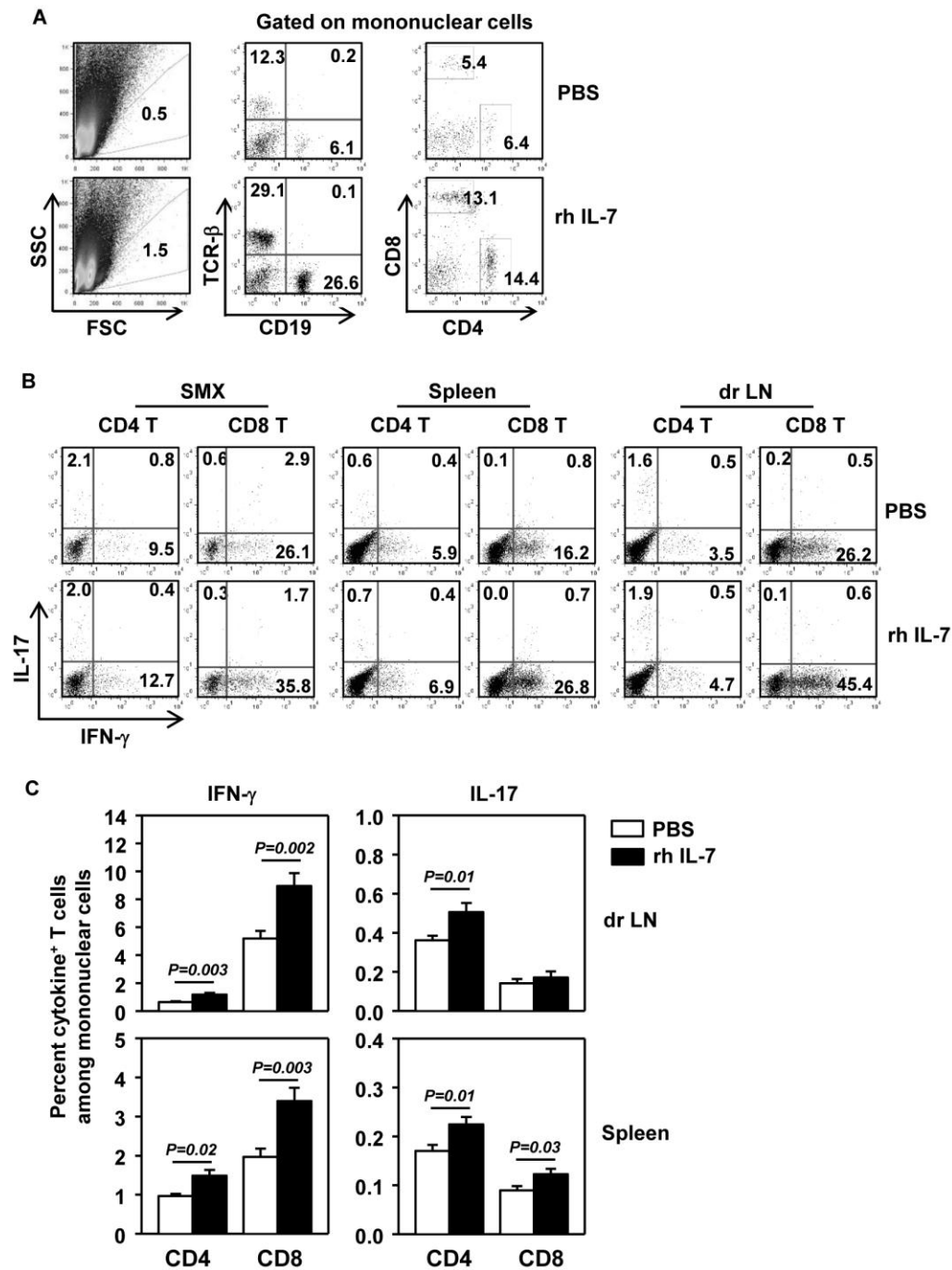


Supplemental Fig 1



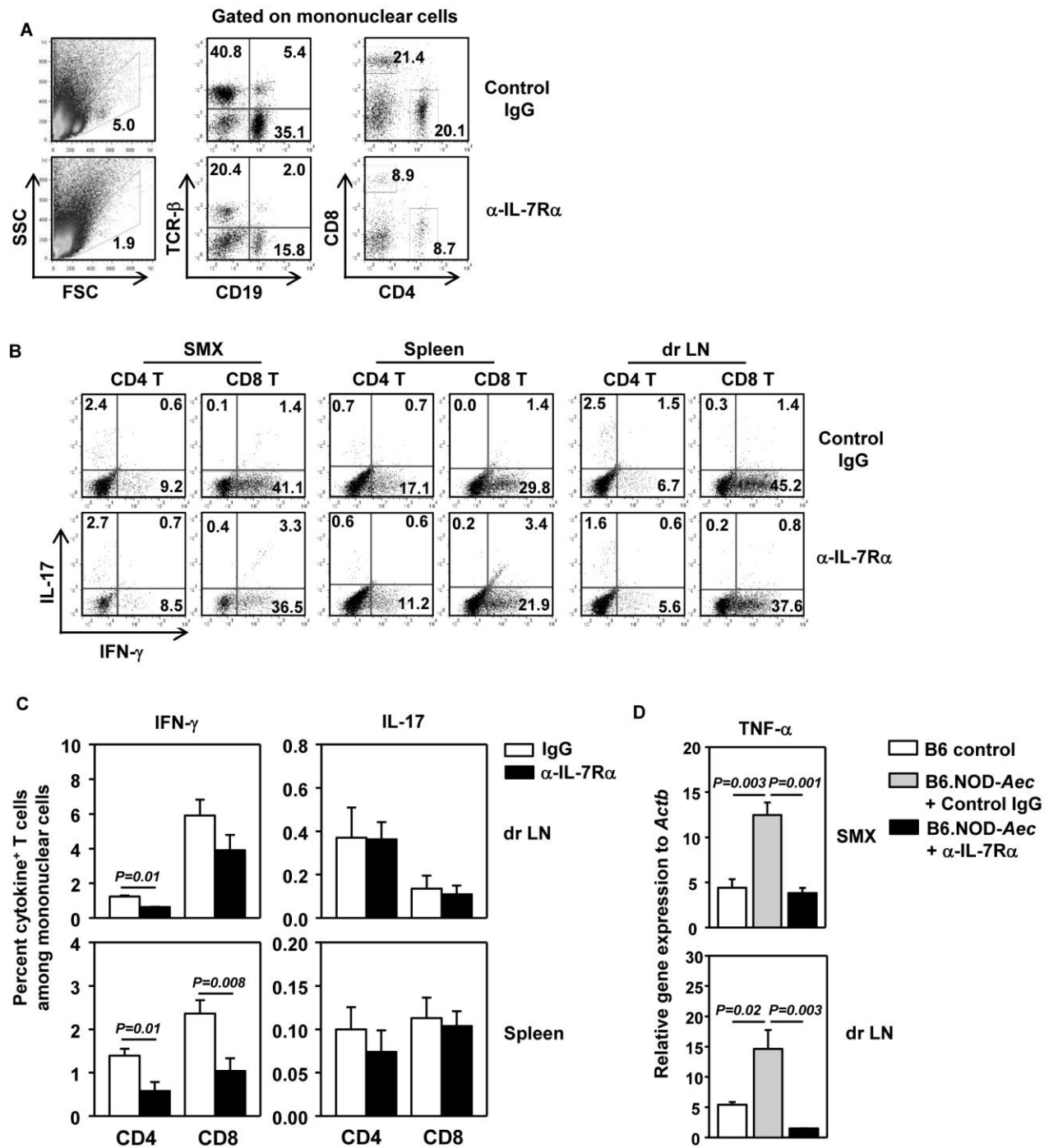
Supplemental Figure 1. Lymphocyte populations and T cell cytokine production in SMX and SMX dr LN of B6.NOD-Aec mice. (A) Hematoxylin and eosin staining of SMX sections from 10~12, 16~18 and 24 weeks old B6.NOD-Aec and control B6 mice. (B) Flow cytometry of lymphocyte populations among total mononuclear cells in SMX dr LN, surface markers on CD4 and CD8 T cells and intracellular cytokines in CD4 and CD8 T cells, and (C) percentage of IFN-γ⁺ or IL-17⁺ T cells among total mononuclear cells in SMX dr LN, from 24-week old control or B6.NOD-Aec mice. Data are representative or the average of analyses of at least 6 mice for each group (2 mice/experiment, 3 independent experiments).

Supplemental Fig 2



Supplemental Figure 2. IL-7 administration increases IFN- γ - and IL-17-producing T cells. B6.NOD-*Aec* mice were treated with PBS or rh IL-7 as described in Figure 2. (A) Flow cytometry of mononuclear population in total SMX cells based on FSC and SSC gating (left panels of plots) and lymphocyte populations among the mononuclear cells (right two panels of plots). (B) Flow cytometry of intracellular cytokines in gated T cells in different tissues. (C) Percentage of IL-17⁺ and IFN- γ ⁺ T cells within total mononuclear cells in SMX dr LN or spleen. Data are the average of analyses of 9 mice for each group (3 mice/experiment, 3 independent experiments).

Supplemental Fig 3



Supplemental Figure 3. Blockade of IL-7R α decreases IFN- γ producing T cells in lymphoid tissues. B6.NOD-Aec mice were treated with IgG or anti-IL-7R α as described in Figure 3. (A) Flow cytometry of mononuclear population in total SMX cells based on FSC and SSC gating (left panels of plots) and lymphocyte populations among the mononuclear cells (right two panels of plots). (B) Flow cytometry of intracellular cytokines in gated T cells in different tissues. (C) Percentage of IL-17⁺ and IFN- γ ⁺ T cells within total mononuclear cells in dr LN or spleen. (D) TNF- α mRNA levels in SMX or dr LN. Data are the average of analyses of 9 mice for each group (3 mice/experiment, 3 independent experiments).