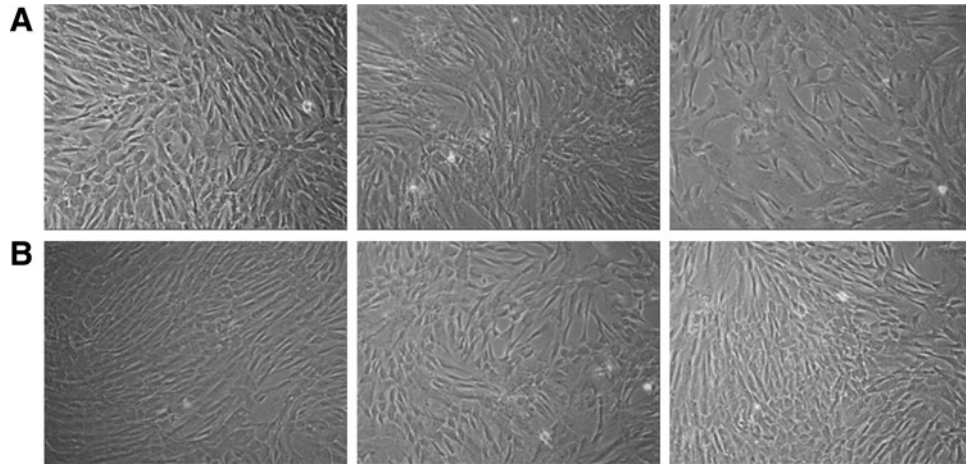


Supplementary Data



SUPPLEMENTARY FIG. S1. Morphology of human amniotic mesenchymal stem cells (hA-MSCs) isolated from pregnant women. A similar fibroblastic-like shape was observed in three Ob- (**A**) and three Co- (**B**) hA-MSCs after 4 population doublings by phase-contrast light microscopy (magnification 10 \times).