

Supplementary Fig. 3a

anti-acetylated tubulin



anti-beta-tubulin

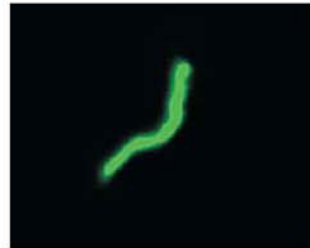


merge

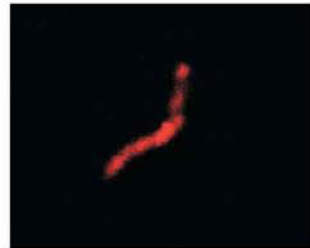


Supplementary Fig. 3b

anti-acetylated tubulin



anti-INV (pAB, rabbit)



merge



Supplementary Fig. 3 A, Costaining of anti-acetylated tubulin antibody and anti-beta tubulin 4 antibody in primary cilia of MDCK cell. **B**, Costaining of anti-acetylated tubulin antibody and anti-inversin antibody to primary cilia of MDCK cell.