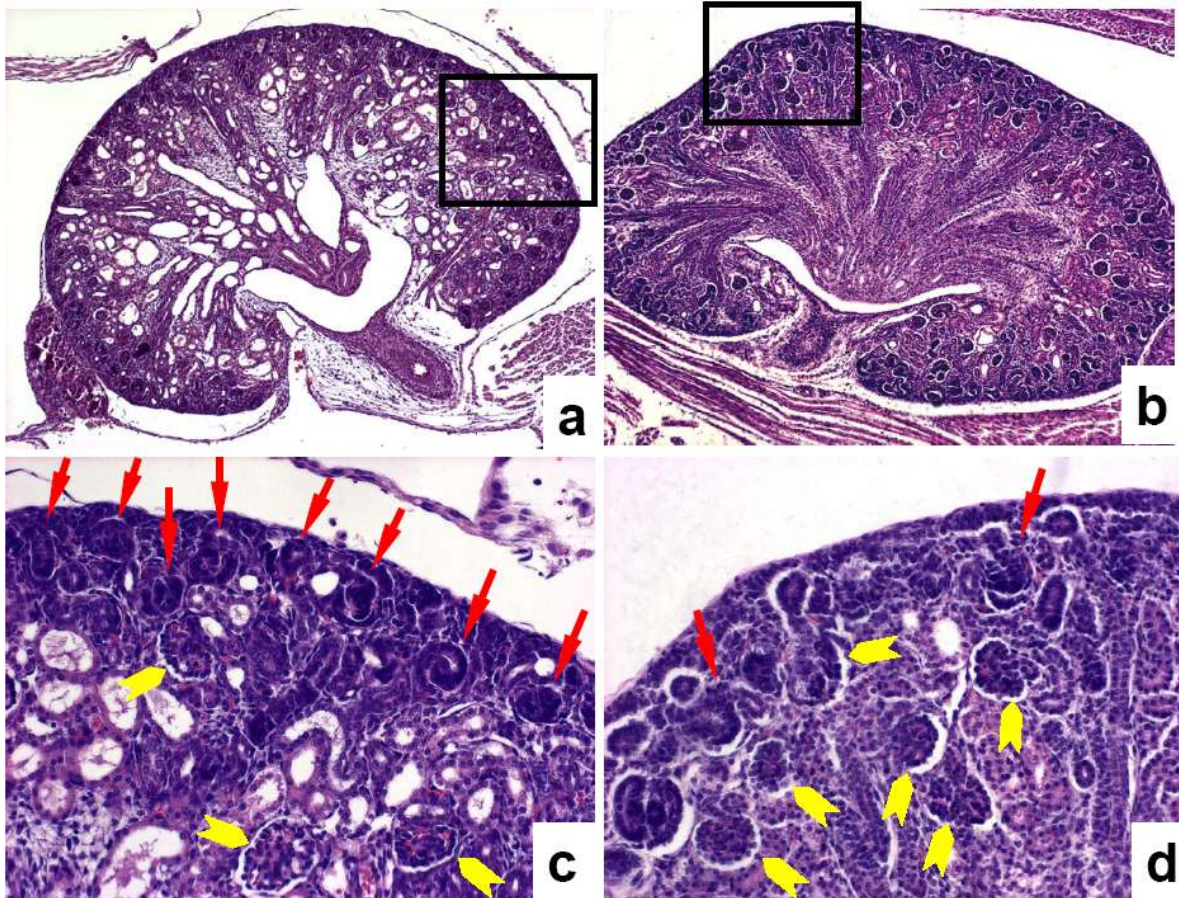


Supplementary Figure 1



Supplementary Figure 1: Delayed nephron maturation and tubule differentiation in the (*inv/inv*) mouse. Histology of *inv/inv* mouse embryonic kidneys. E17.5 mouse embryonic kidneys were fixed in formalin, paraffin-embedded, sectioned at 8 μ m intervals and stained with hematoxylin/eosin. In contrast to heterozygous mutant kidneys (**b**), *inv/inv* kidneys showed cortico-medullary disorganization, failure of mature glomeruli to migrate to the cortex and low tubular density (**a**). Insets of (**a**) and (**b**) are shown at higher magnification in (**c**) and (**d**). Delayed nephrogenesis resulted in higher density of S- and comma-shaped bodies (red arrows), and fewer mature glomeruli (yellow arrowheads) in the cortex of *inv/inv* kidneys (**c**) compared to heterozygous controls (**d**).