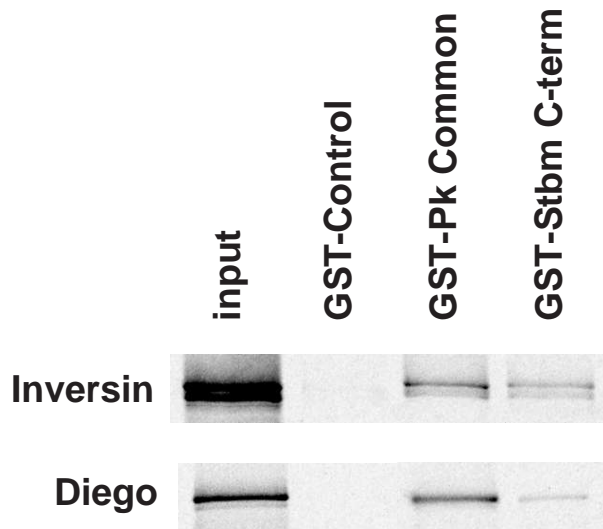


Supplementary Figure 5



Supplementary Figure 5: Inversin shows the same binding behavior as Diego with respect to Prickle (Pk) and Strabismus (Stbm). GST fusion proteins with a fragment of Pk present in all Pk isoforms (GST-Pk Common), with the C-terminus of Stbm (GST-Stbm C-term) and with the N-terminal region of the PkM isoform (GST-Control) were tested for their ability to pull down the in vitro translated and ^{35}S -labelled full-length versions of inversin and diego. The two proteins interact in a similar pattern to Pk Common and the C-terminal part of Strabismus. As standard, 10% of the in vitro translated protein used for the pull down was loaded directly (input).