

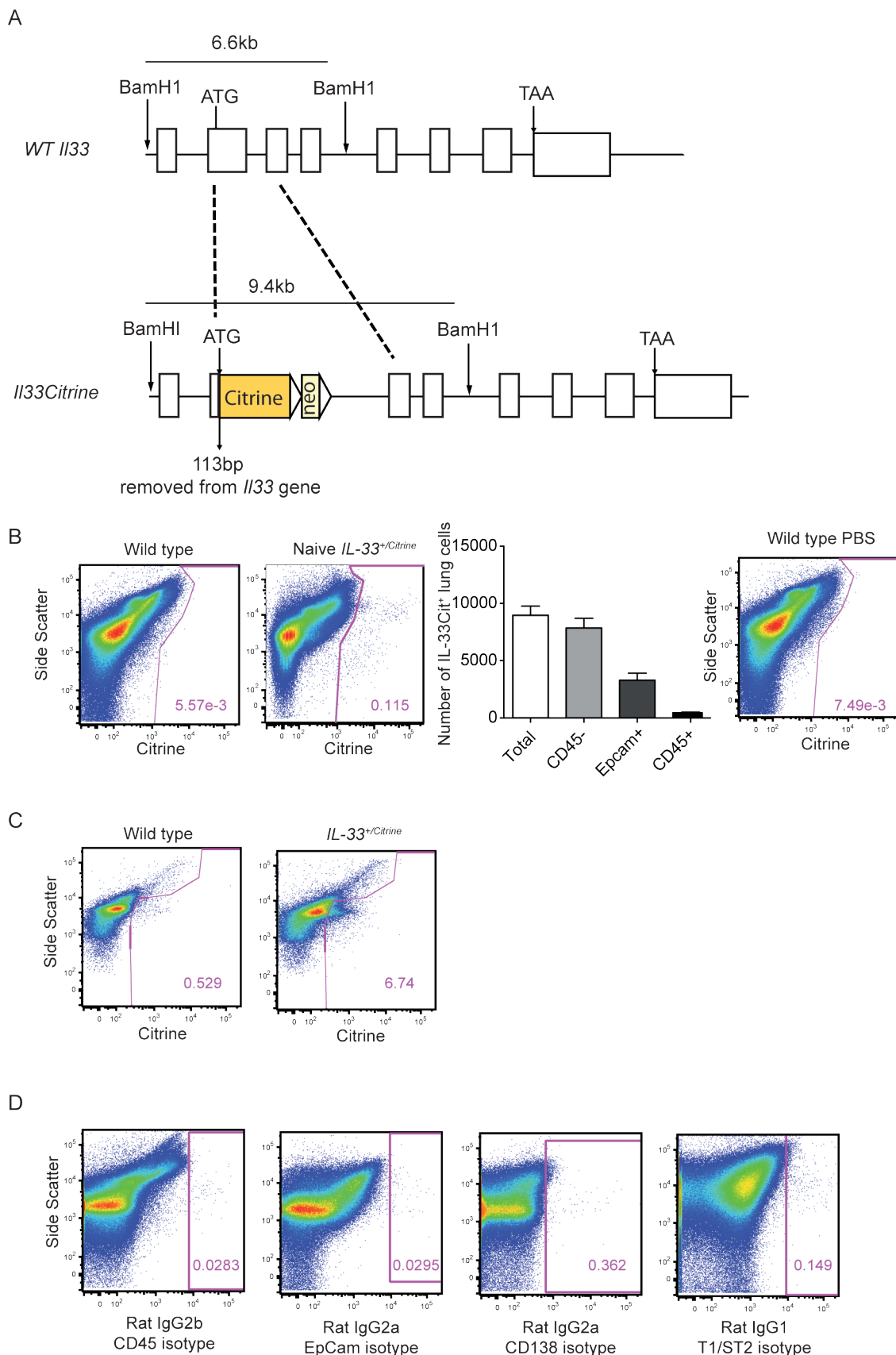
European Journal of Immunology

**Supporting Information
for**

DOI 10.1002/eji.201242863

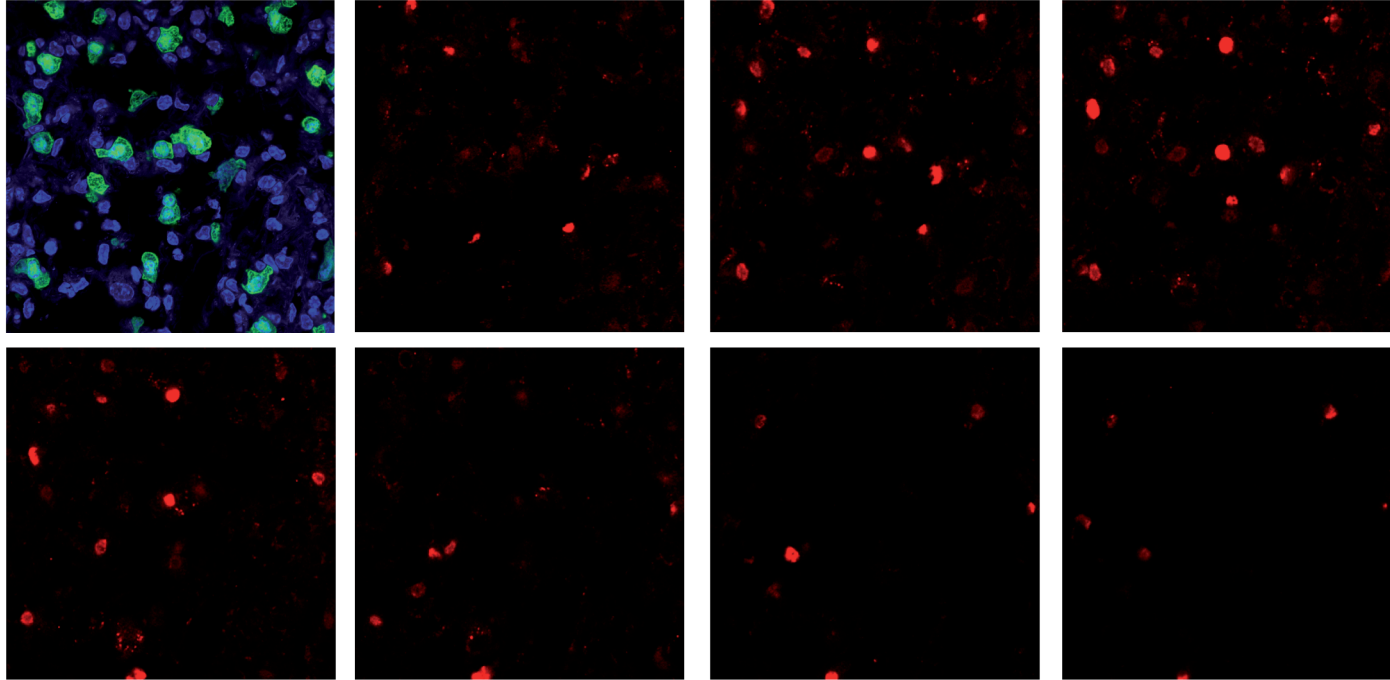
Clare S. Hardman, Veera Panova and Andrew N. J. McKenzie

**IL-33 citrine reporter mice reveal the temporal and spatial expression of IL-33
during allergic lung inflammation**



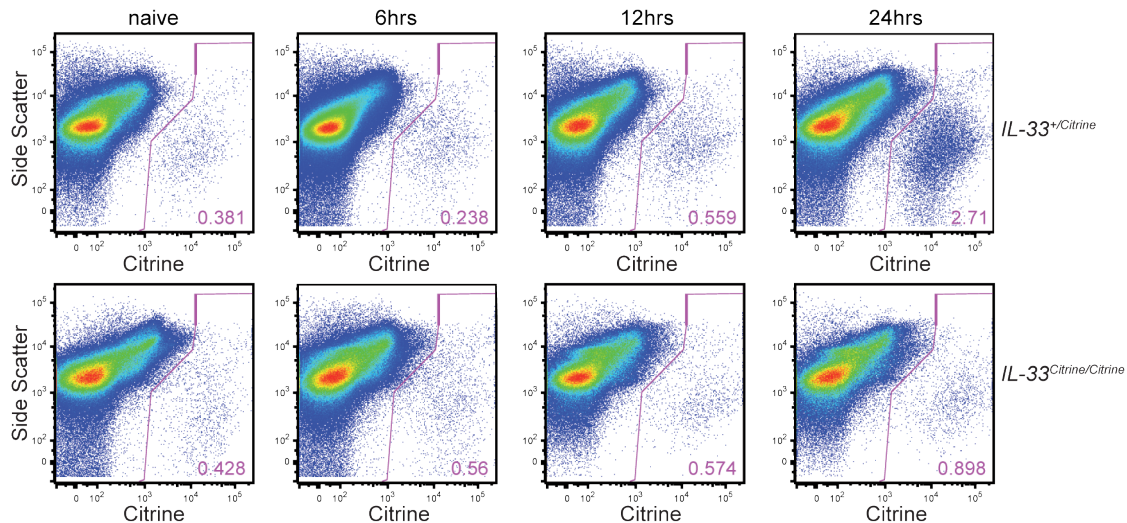
Supporting Information Figure 1. Generation of an *IL-33Citrine* reporter and defining naïve *IL-33* expression.

(A) Schematic of *Citrine* insertion into the *Il33* gene immediately down stream of the start codon. (B) Flow cytometry data of citrine expression in the lung tissue of naïve mice and citrine⁺ cells' expression of epithelial cell markers n = 3 - 4. Data are representative of 6 independent experiments. Error bars represent mean \pm SEM. (C) Flow cytometry data of citrine expression in the mediastinal lymph node tissue of naïve mice n = 4. Data are representative of 2 independent experiments. D. flow cytometry isotype controls for pneumocyte gating strategy i) CD45 ii) EpCam iii) CD138 iv) T1/ST2.

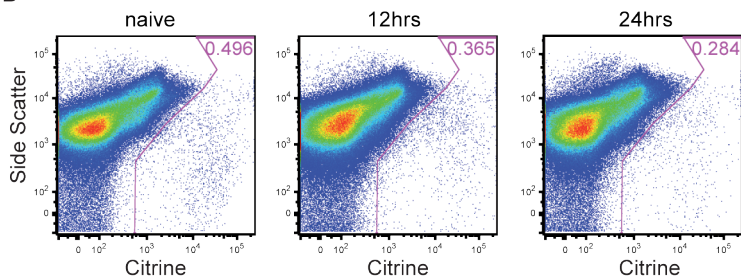


Supporting Information Figure 2. Colocalisation of citrine and IL-33 antibody fluorescence. Confocal image (63x) of lung citrine expression following OVA treatment, citrine (green) and DAPI (blue). With a 7-panel Z-stack (63x) showing anti IL-33 antibody staining (red) for the same field of view.

A



B



Supporting Information Figure 3. Gating strategy for Figure 5 citrine expression.

(A) Citrine gating strategy induction of citrine expression for Fig. 5C. (B) Citrine gating strategy for Fig. 5D.