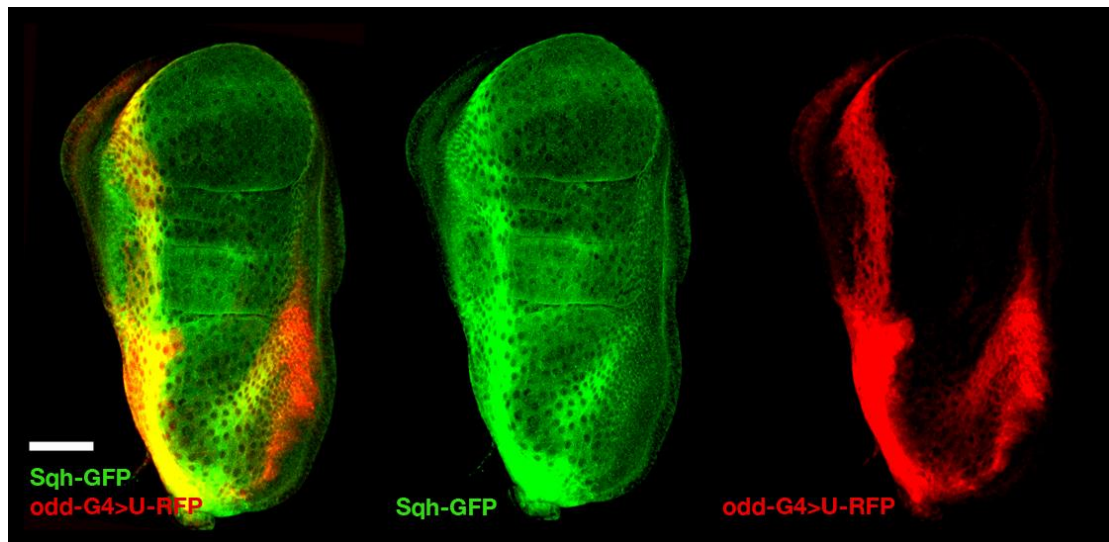
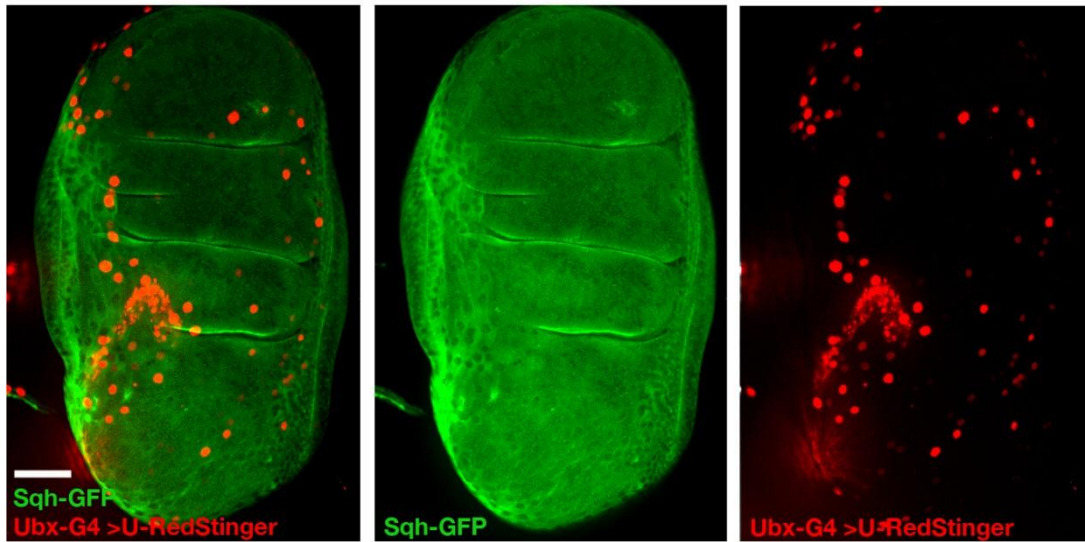


Supplementary Figure S1 High magnification image showing actin and myosin II expression in the peripodial cells. A, B) 3D reconstruction of the central cells (*gug-Gal4* > *UAS-lifeact-GFP*, *Sqh-mCherry*). A) Apical view. B) Basal view. C, D) 3D reconstruction of the stripe cells (*odd-Gal4* > *UAS-lifeact-GFP*, *Sqh-mCherry*). C) Apical view. D) Basal view. Scale bars: 10 μ m.



Supplementary Figure S2 Expression patterns of *odd-Gal4* (red)

compared with myosin II (green). The expression comprises the stalk, and the cuboidal cells surrounding the central flat cells on the peripodial side, and expands to the more lateral region of the columnar cells. Scale bar: 50 μ m.



Supplementary Figure S3 Expression pattern of Ubx^{LDN} -Gal4 (red).

Ubx^{LDN} -Gal4 is expressed in apparently randomly scattered squamous cells of the peripodial epithelium. Scale bar: 50 μ m.