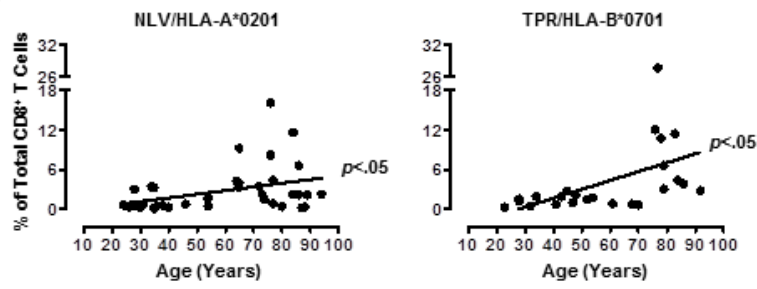


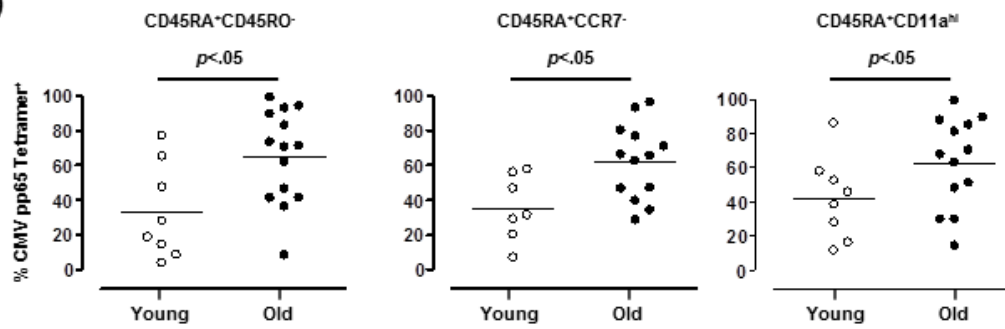
# Low Avidity CMV<sup>+</sup> T Cells accumulate in Old Humans

## Supplementary Figure 1

A)

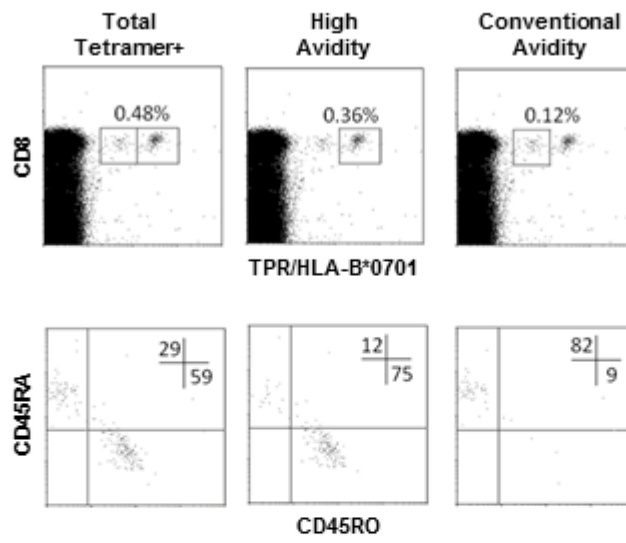


B)

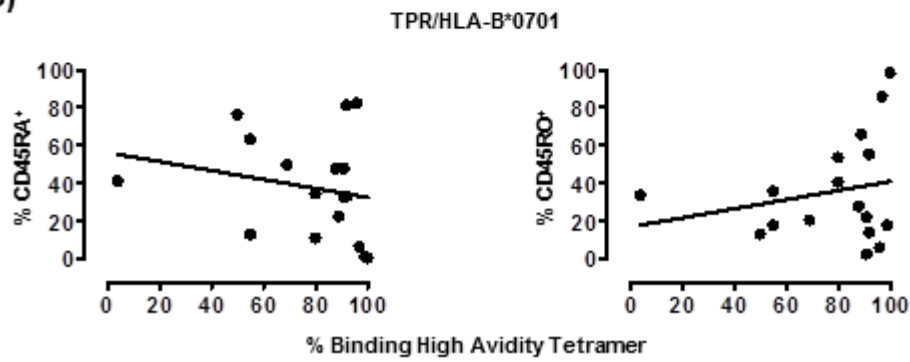


Supplementary Figure 2

A)



B)

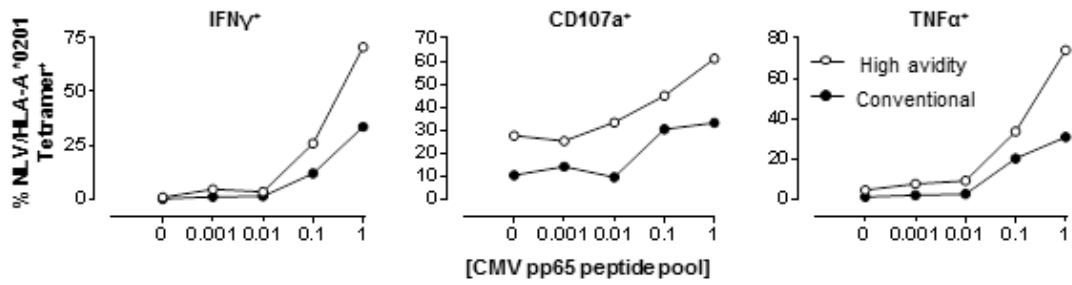


Low Avidity CMV<sup>+</sup> T Cells accumulate in Old Humans

Supplementary Figure 3

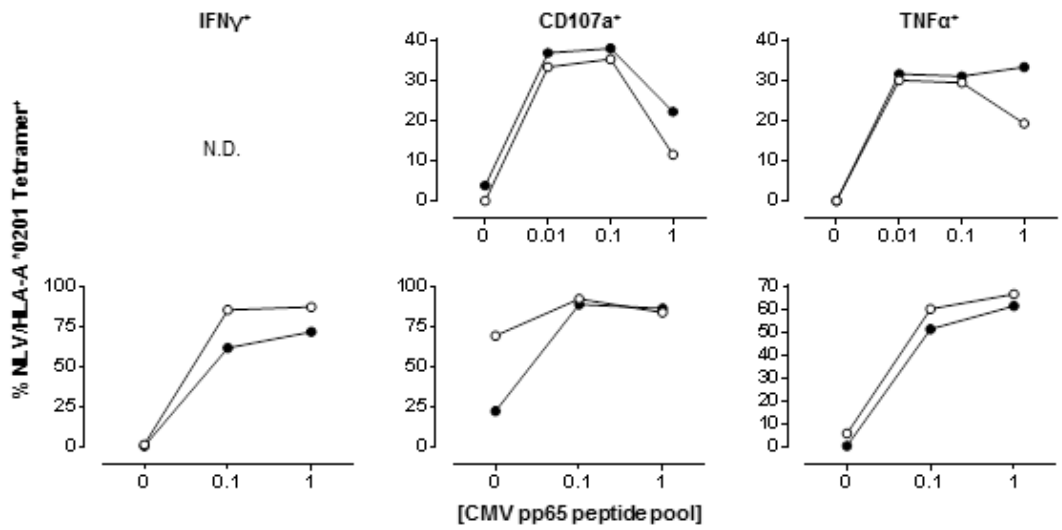
A)

Participants with mixed high and conventional avidity populations:

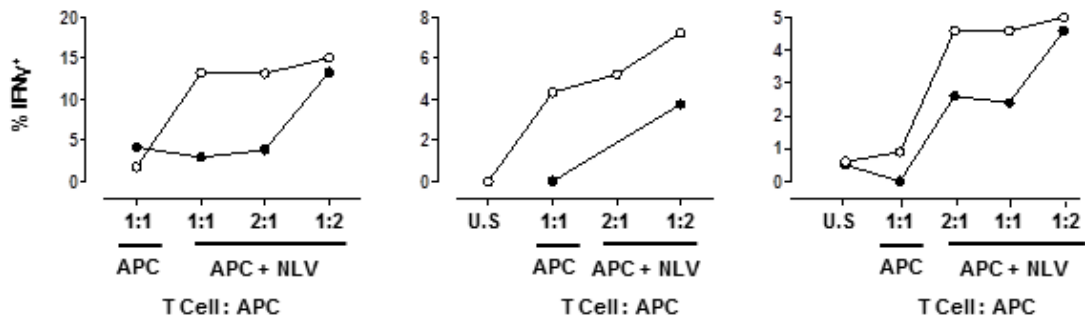


B)

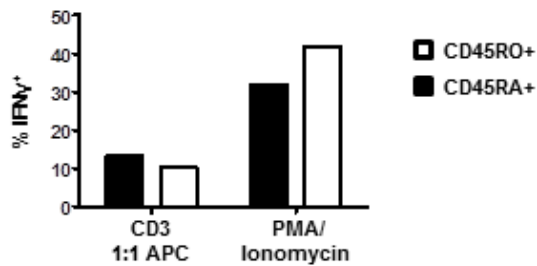
Participants with all high avidity binding populations:



C)



D)



Low Avidity CMV<sup>+</sup> T Cells accumulate in Old Humans

**Supplementary Figure 4**

