

Supplementary Material

Contents

Figure S1. NMR spectra of final compounds (2 and 6–8).	2
Figure S2. NMR spectra of Mosher's esters (methyl ester-5 and <i>rac</i> - methyl ester-5).	10
Figure S3. Comparison of NMR data for fellutamide B (2).	14
Figure S4. Raw data for <i>in vitro</i> inhibition assays against <i>Mycobacterium tuberculosis</i> .	15

Figure S1. NMR spectra of final compounds (2 and 6–8).

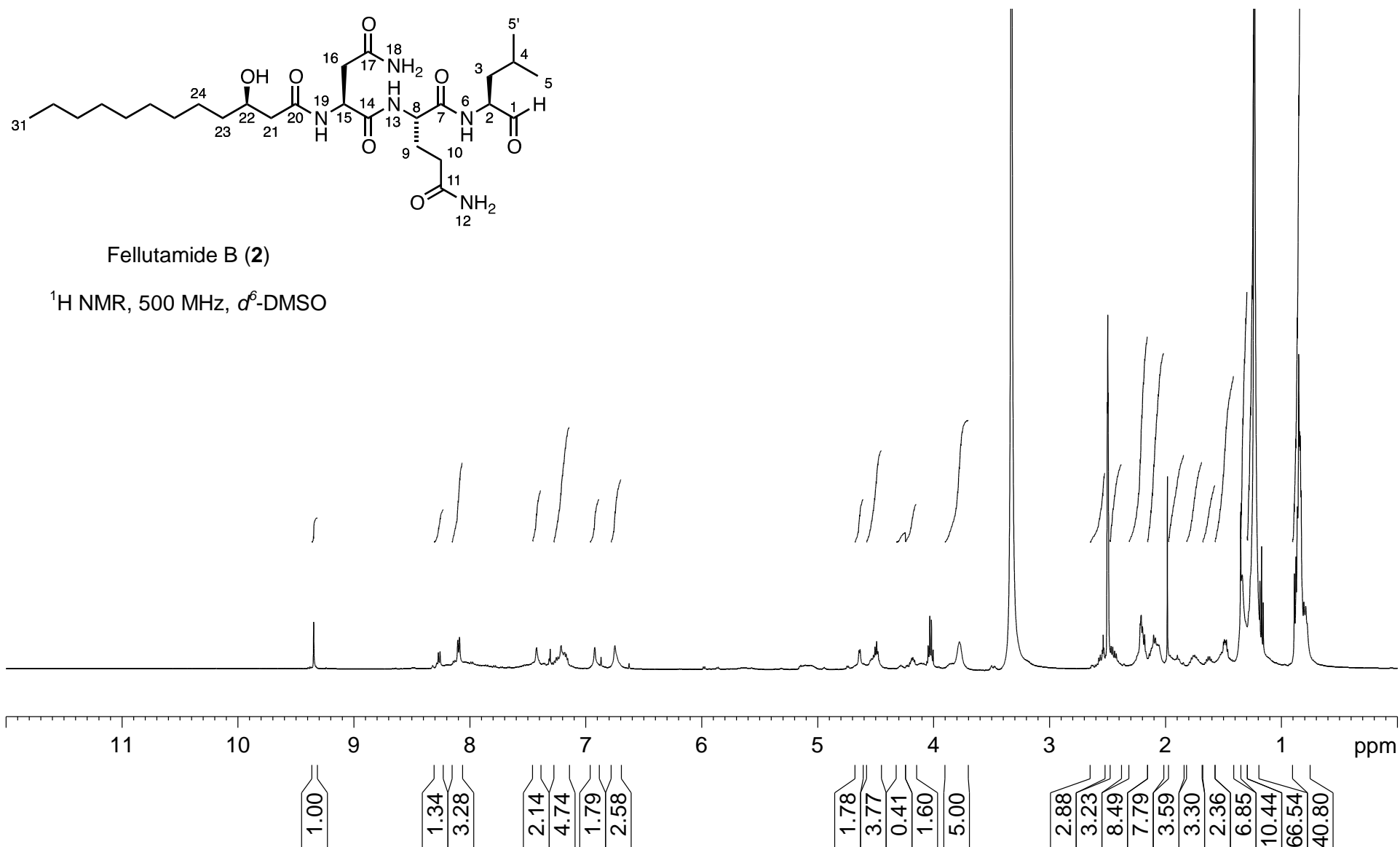
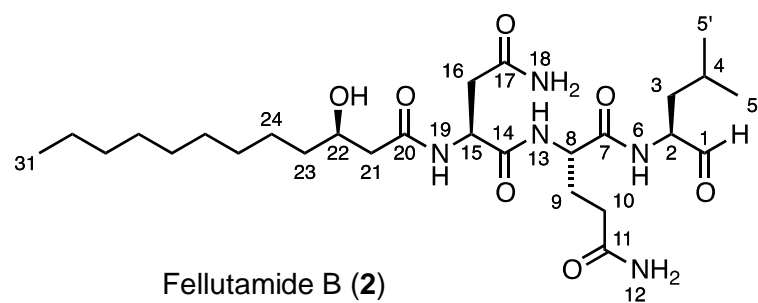


Figure S1. Cont.



Fellutamide B (2)

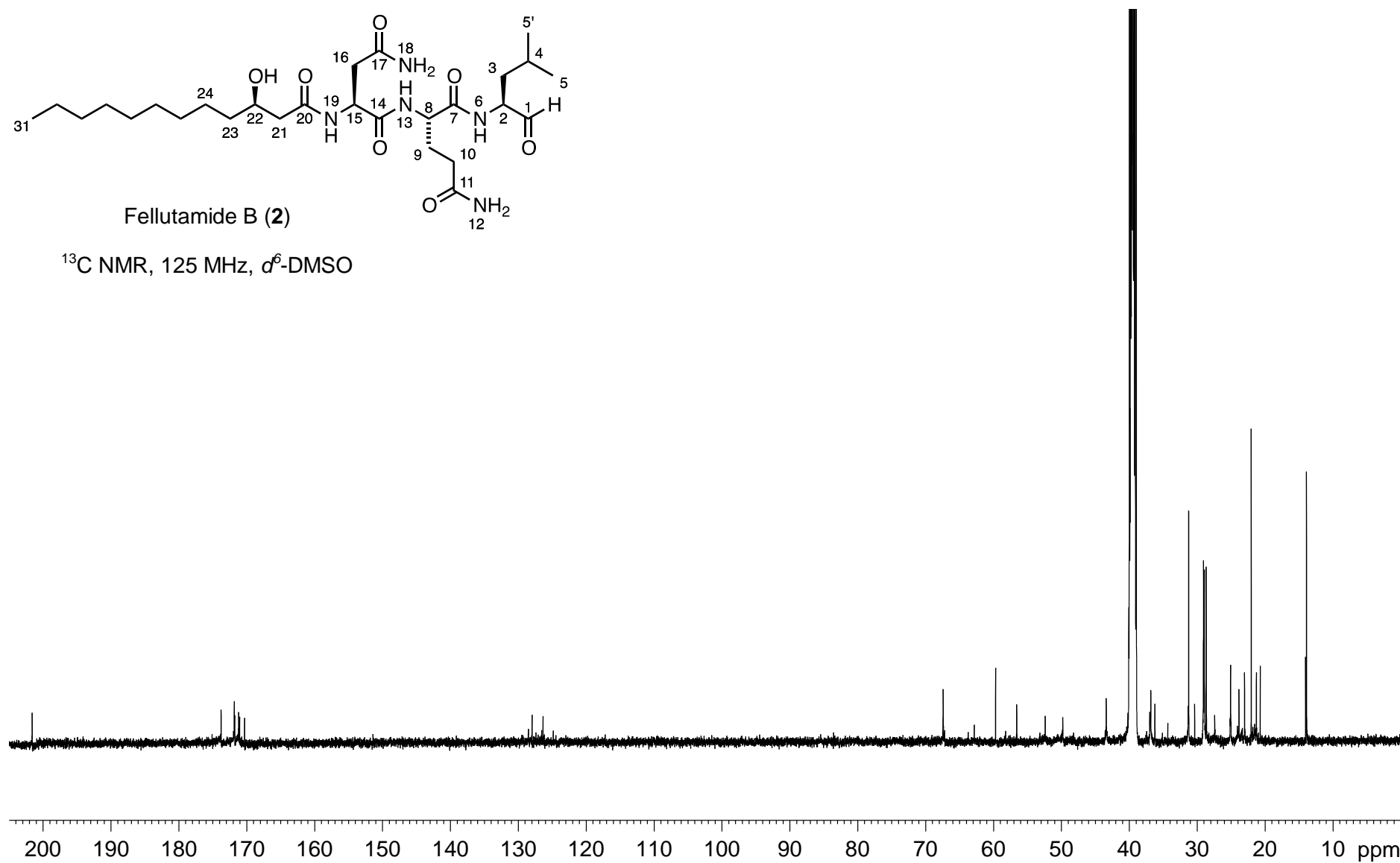
 ^{13}C NMR, 125 MHz, d^6 -DMSO

Figure S1. Cont.

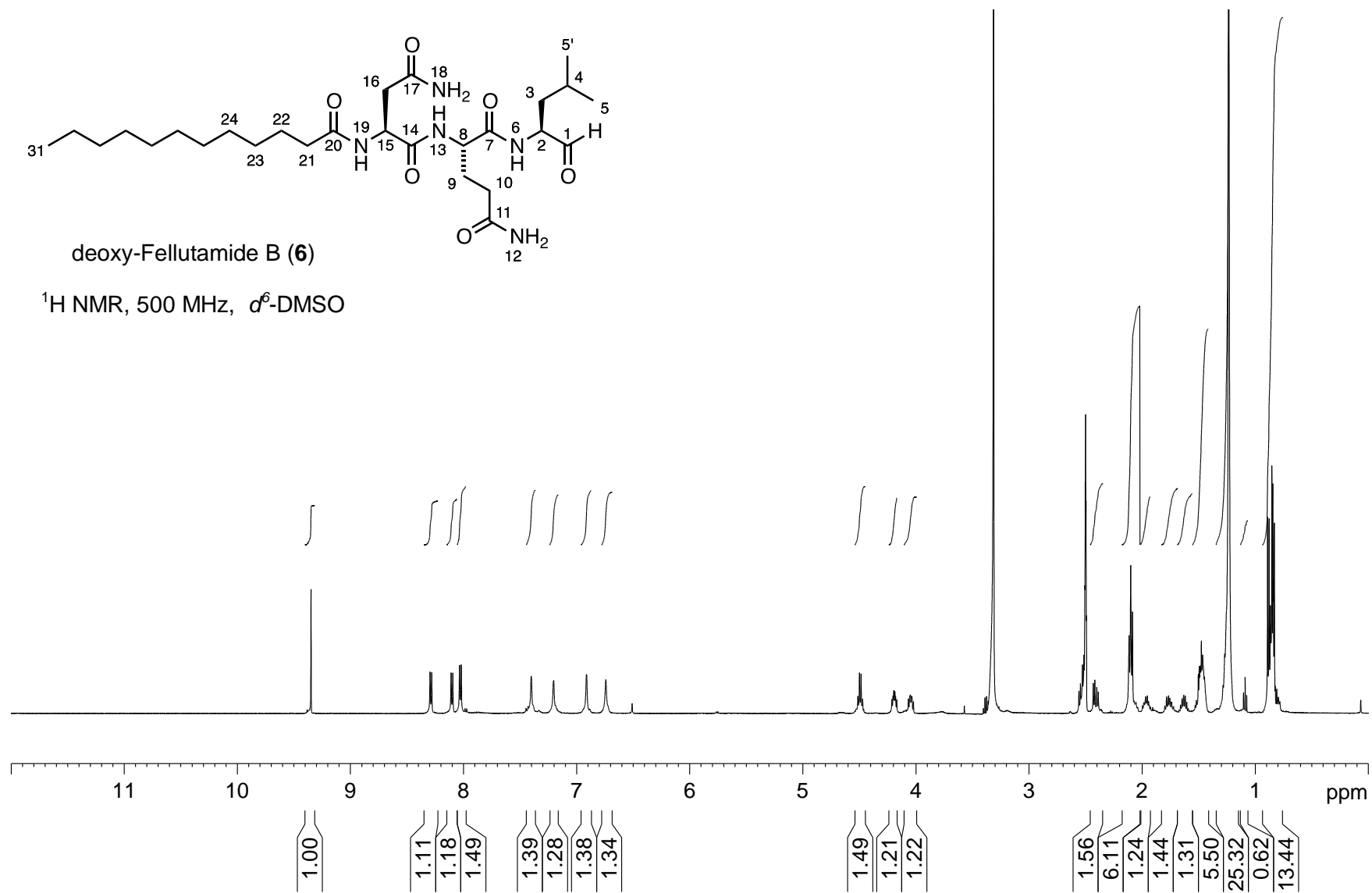


Figure S1. Cont.

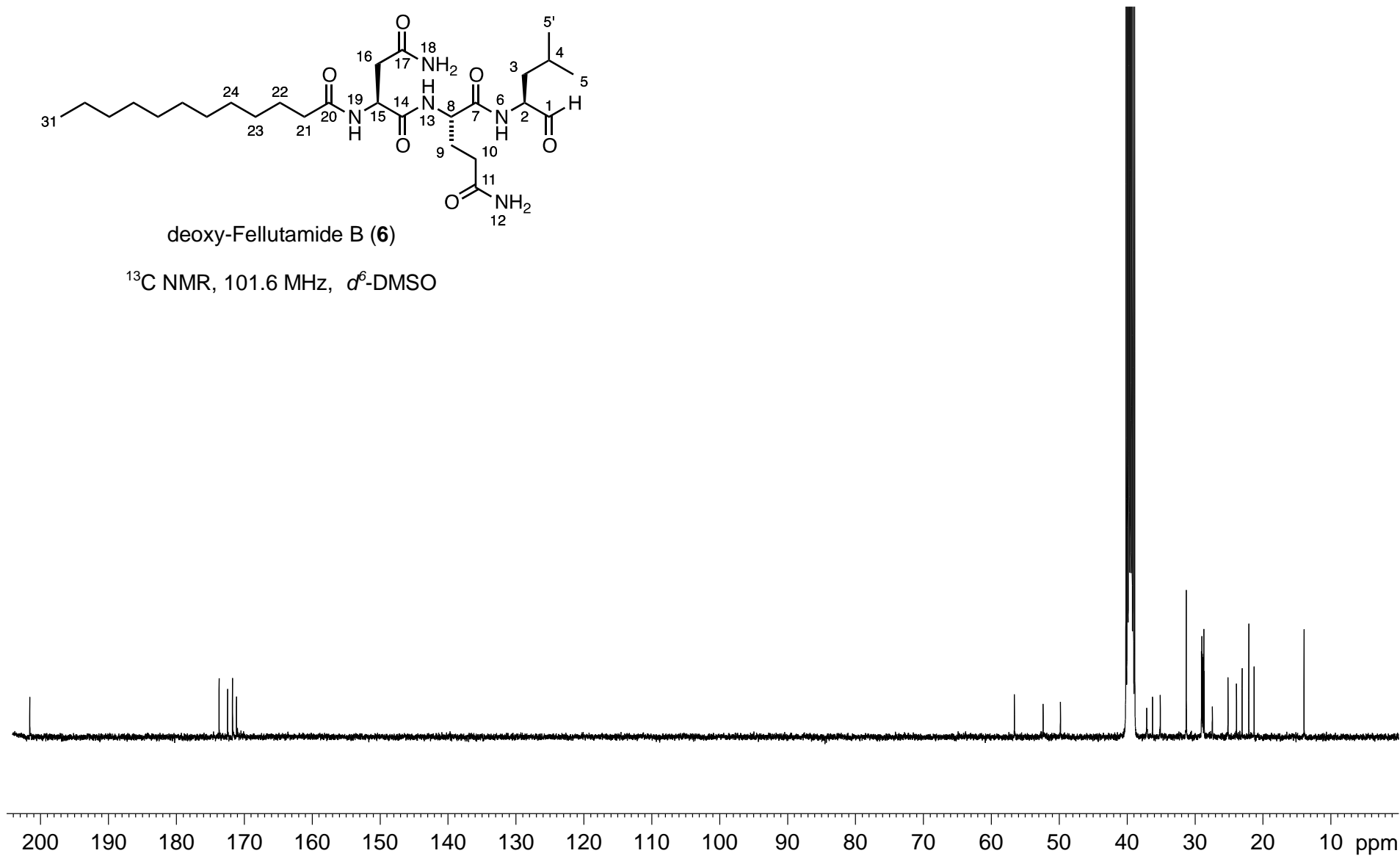


Figure S1. Cont.

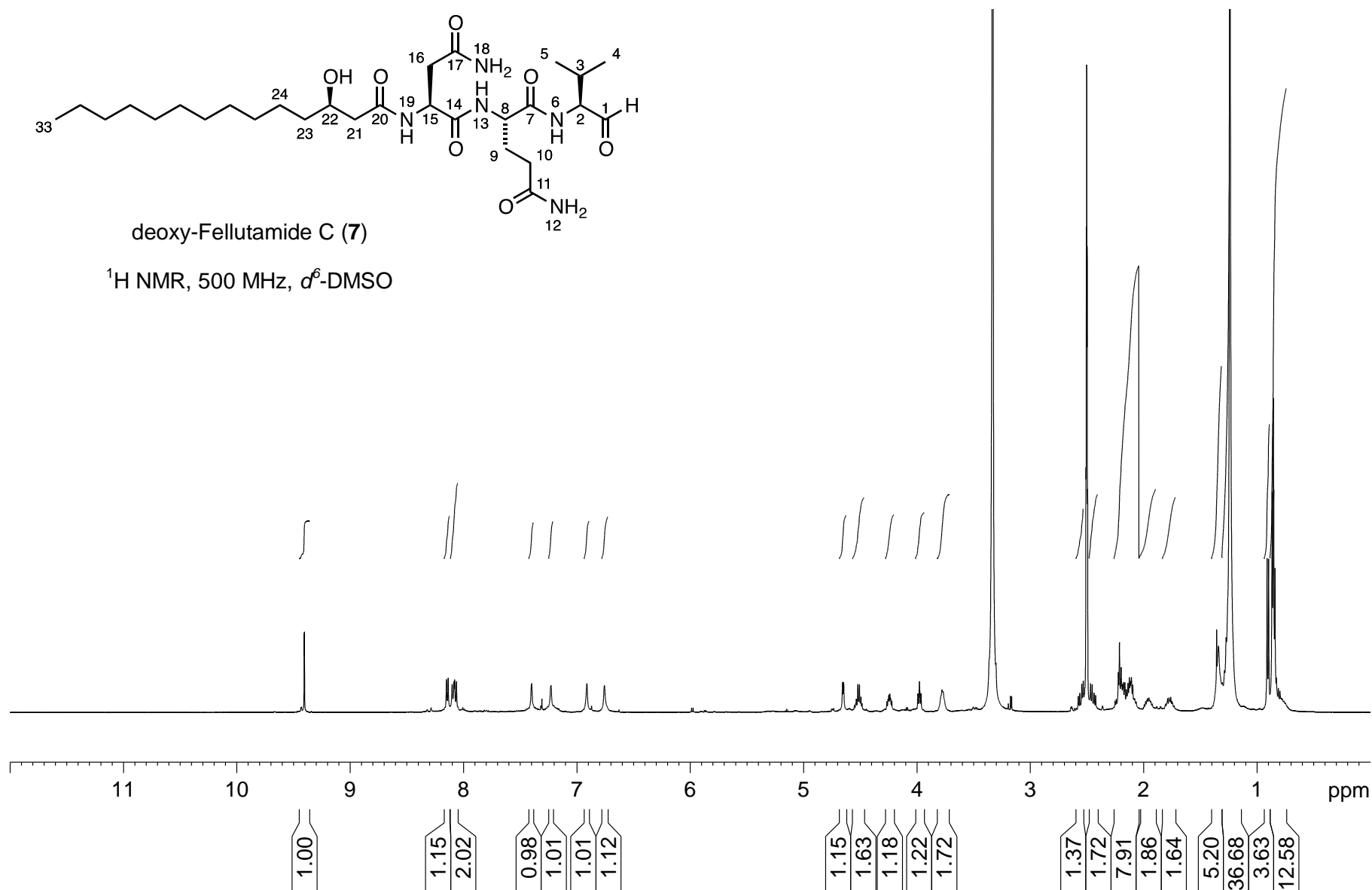


Figure S1. Cont.

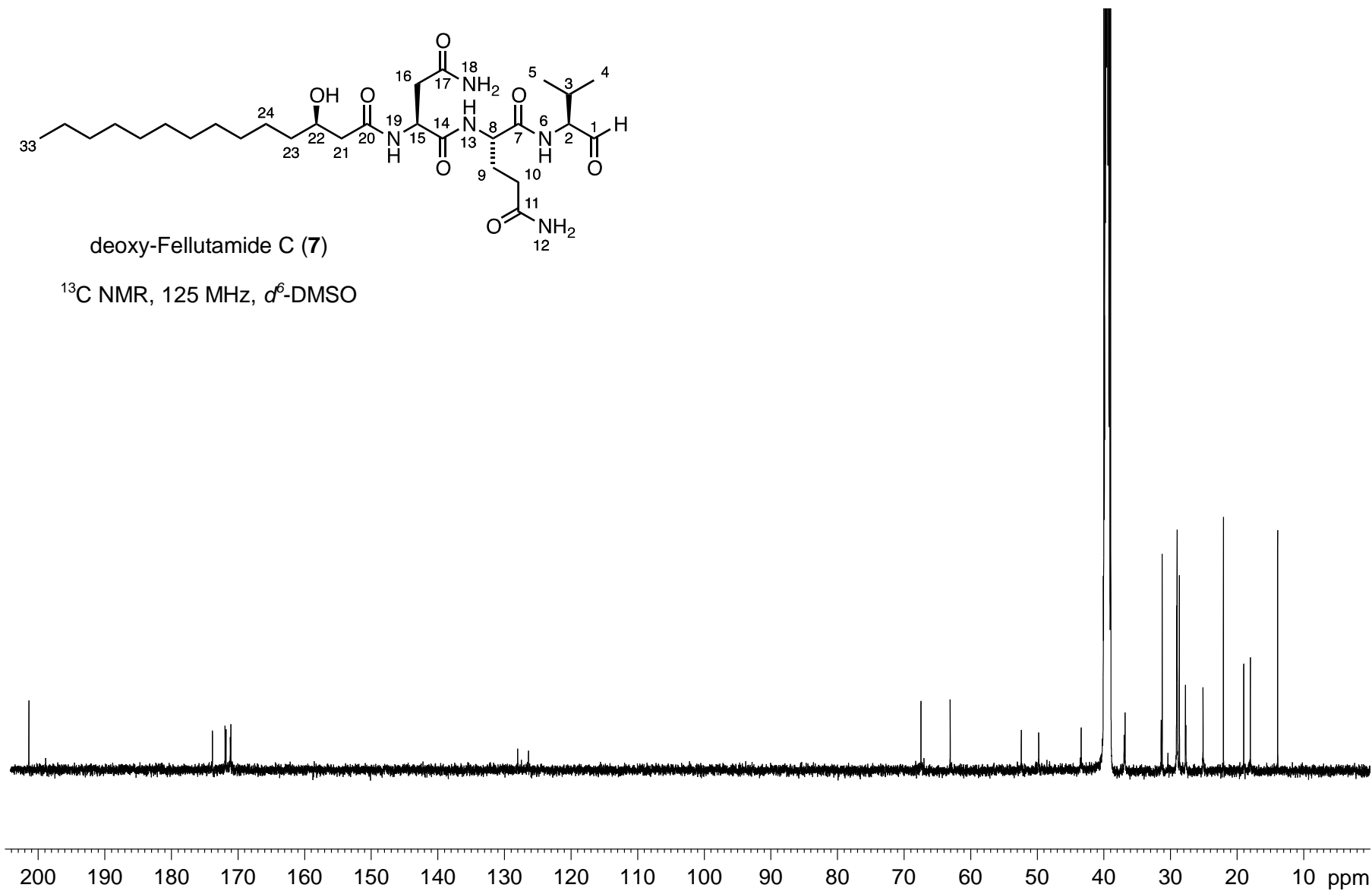


Figure S1. Cont.

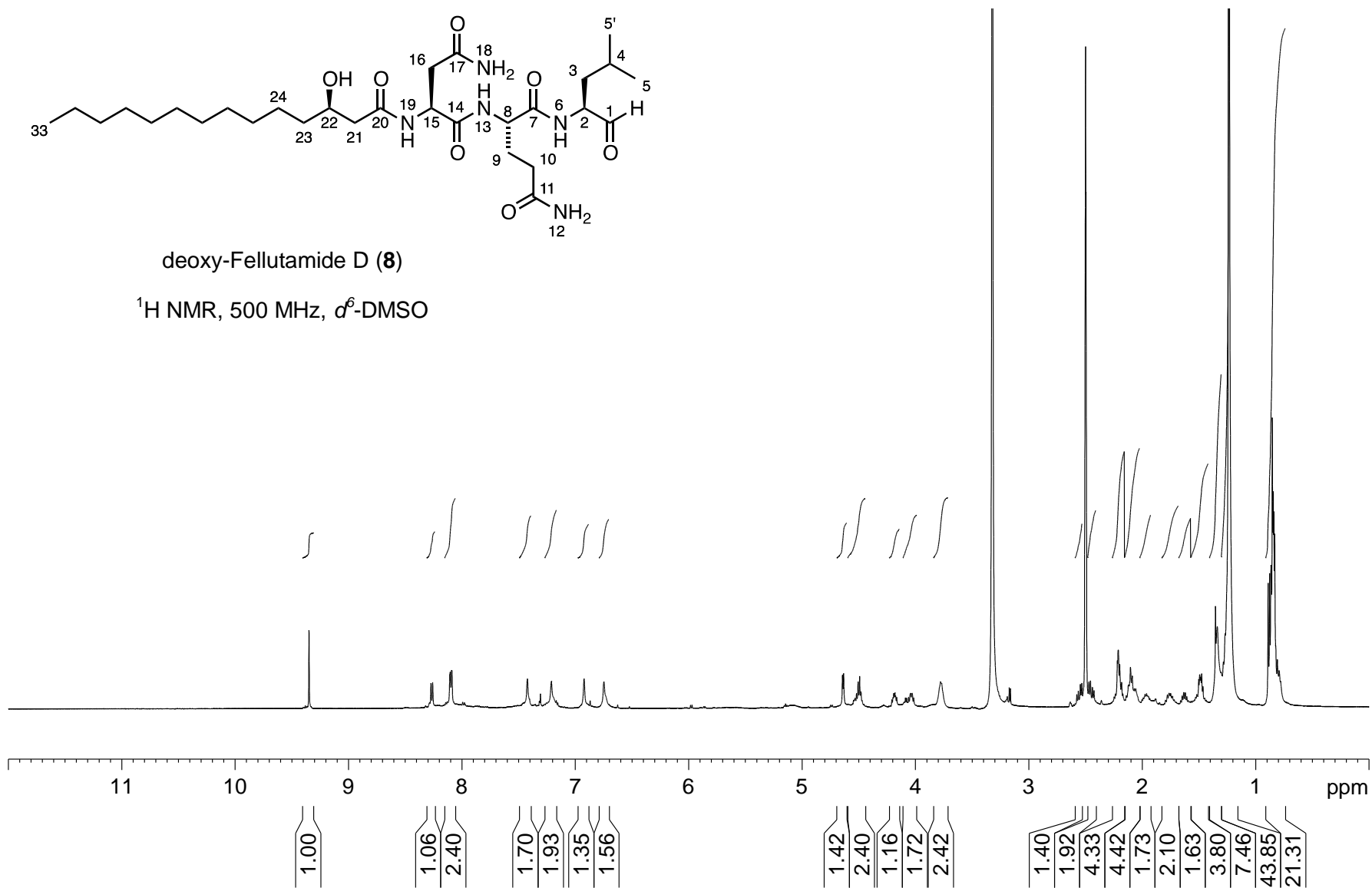


Figure S1. Cont.

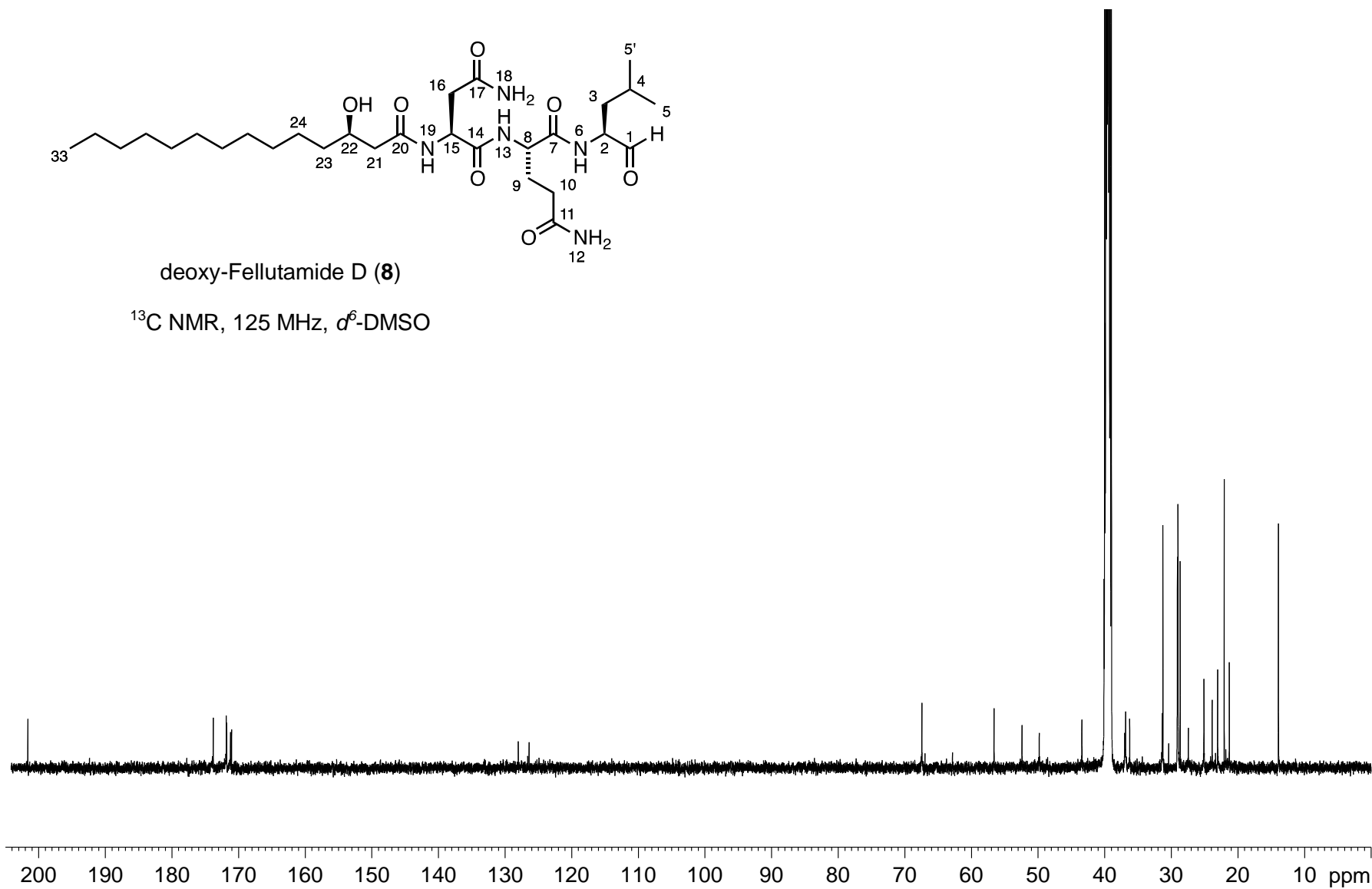


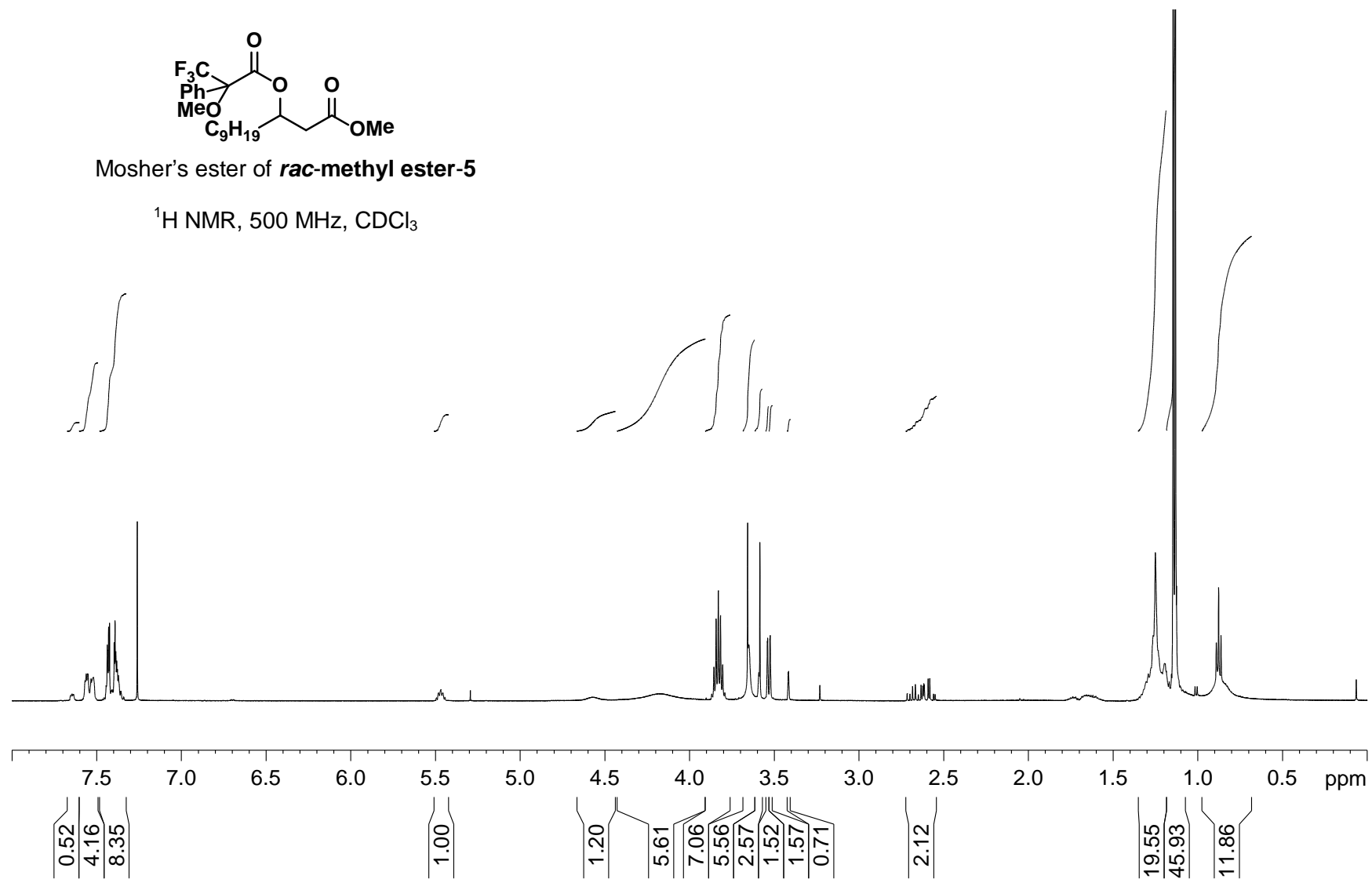
Figure S2. NMR spectra of Mosher's esters (**methyl ester-5** and *rac*-methyl ester-5).

Figure S2. Cont.

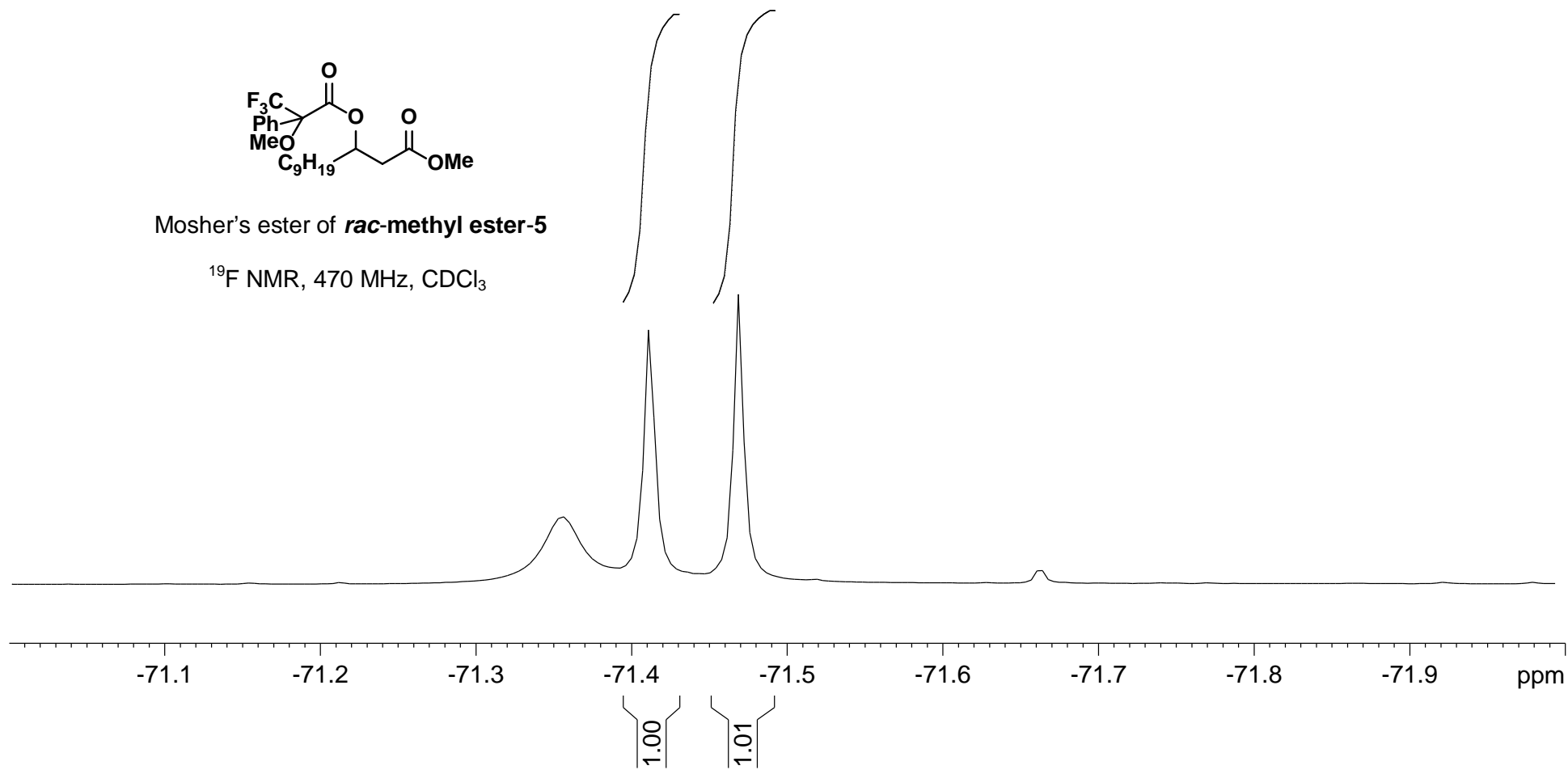


Figure S2. Cont.

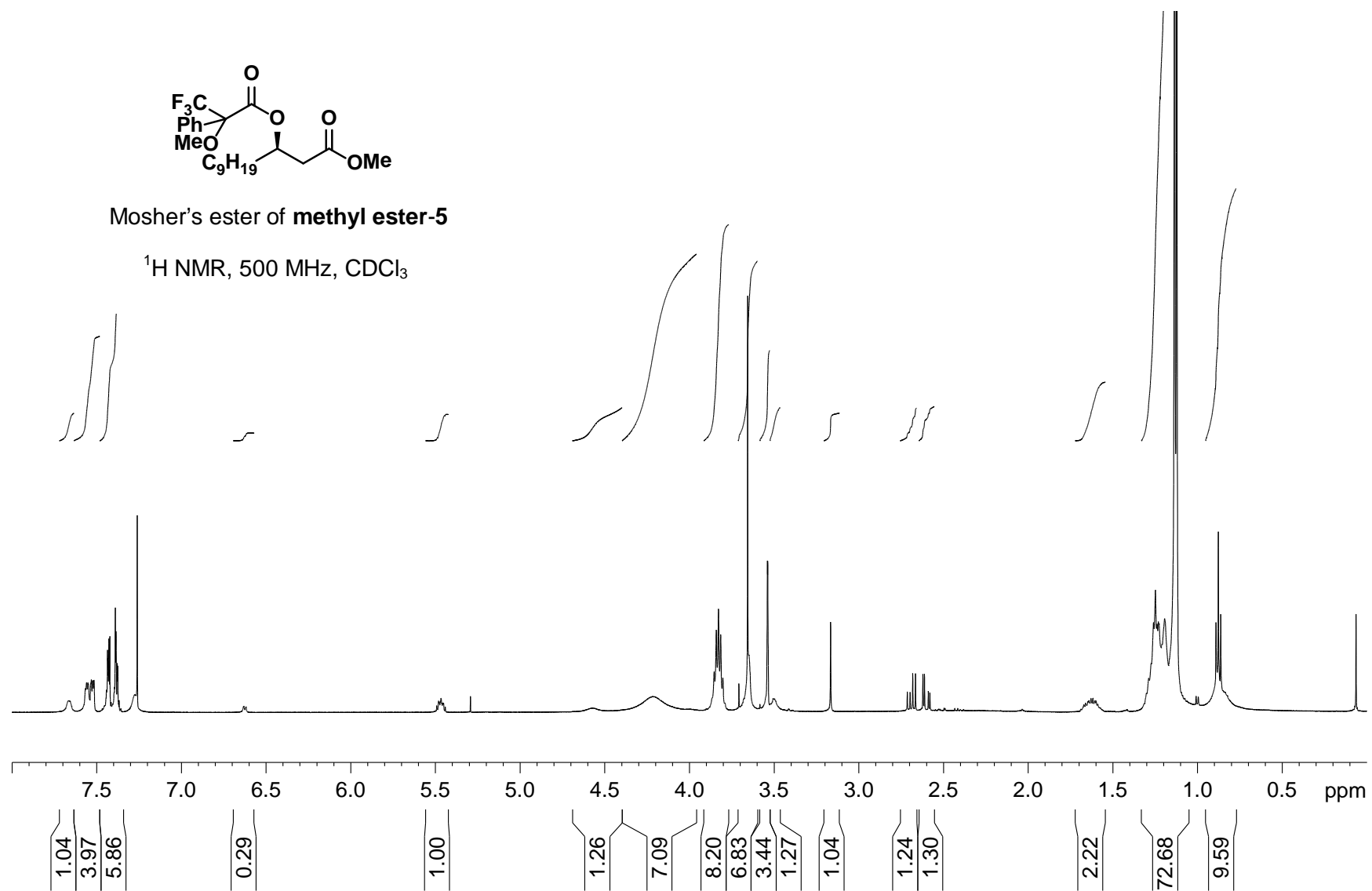


Figure S2. Cont.

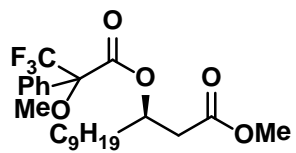
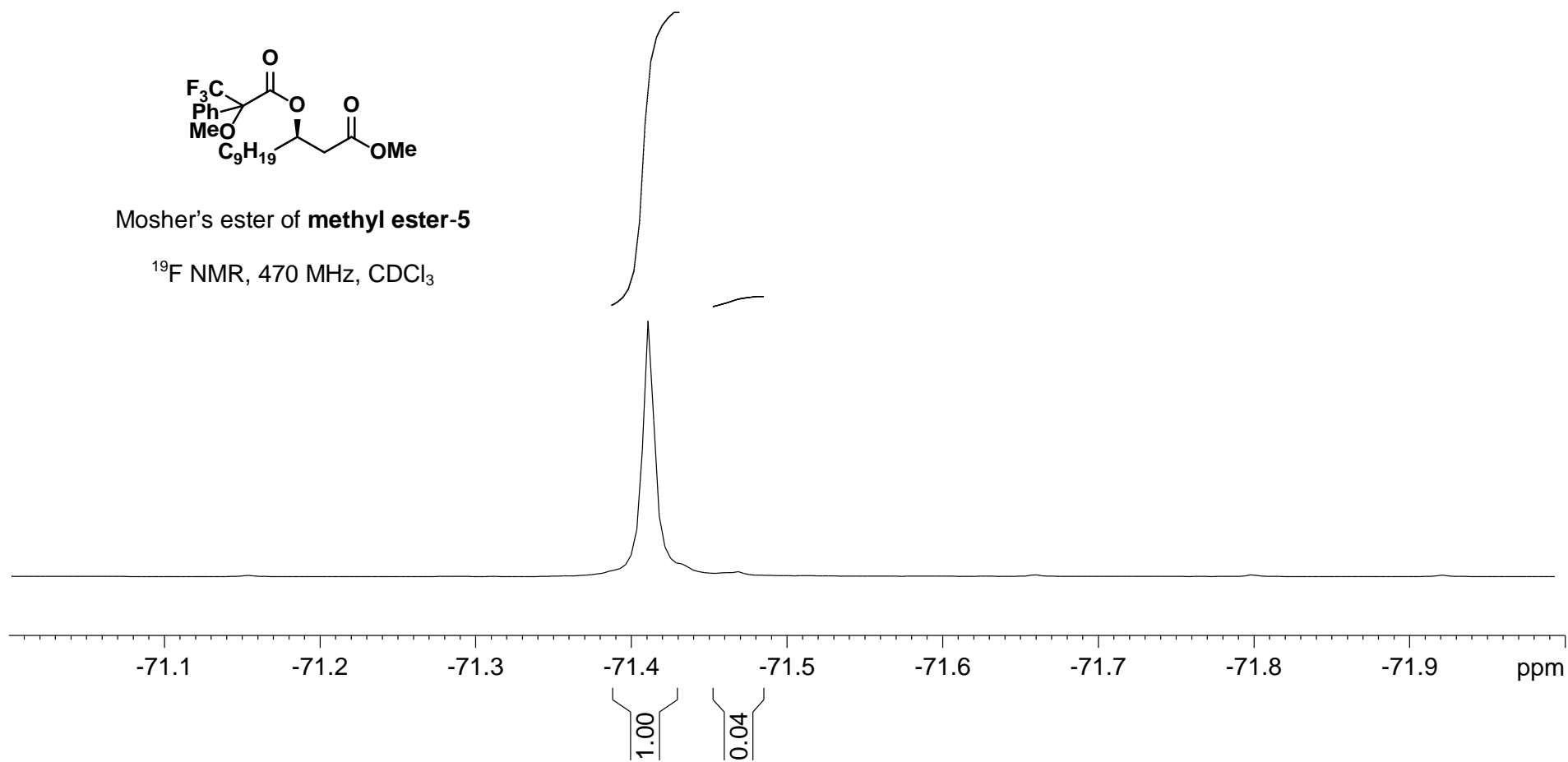
Mosher's ester of **methyl ester-5** ^{19}F NMR, 470 MHz, CDCl_3 

Figure S3. Comparison of ^{13}C NMR data between synthesized and natural fellutamide B (**2**). Synthesised fellutamide B; Synthetic: 125 MHz, d_6 -DMSO; Natural: 101.6 MHz, d_6 -DMSO.

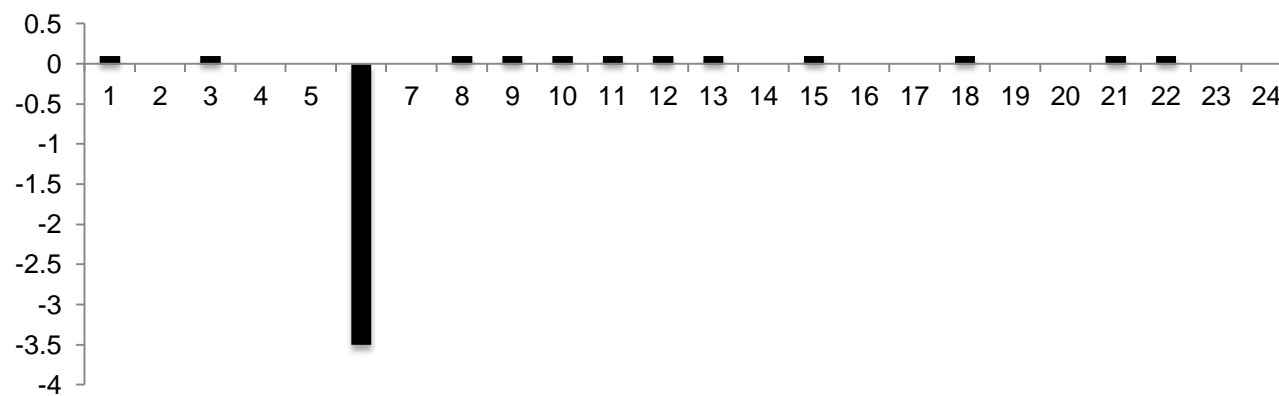


Figure S4. Raw data for *in vitro* inhibition assays against *Mycobacterium tuberculosis*.