

Supplementary material for Yeats *et al.*

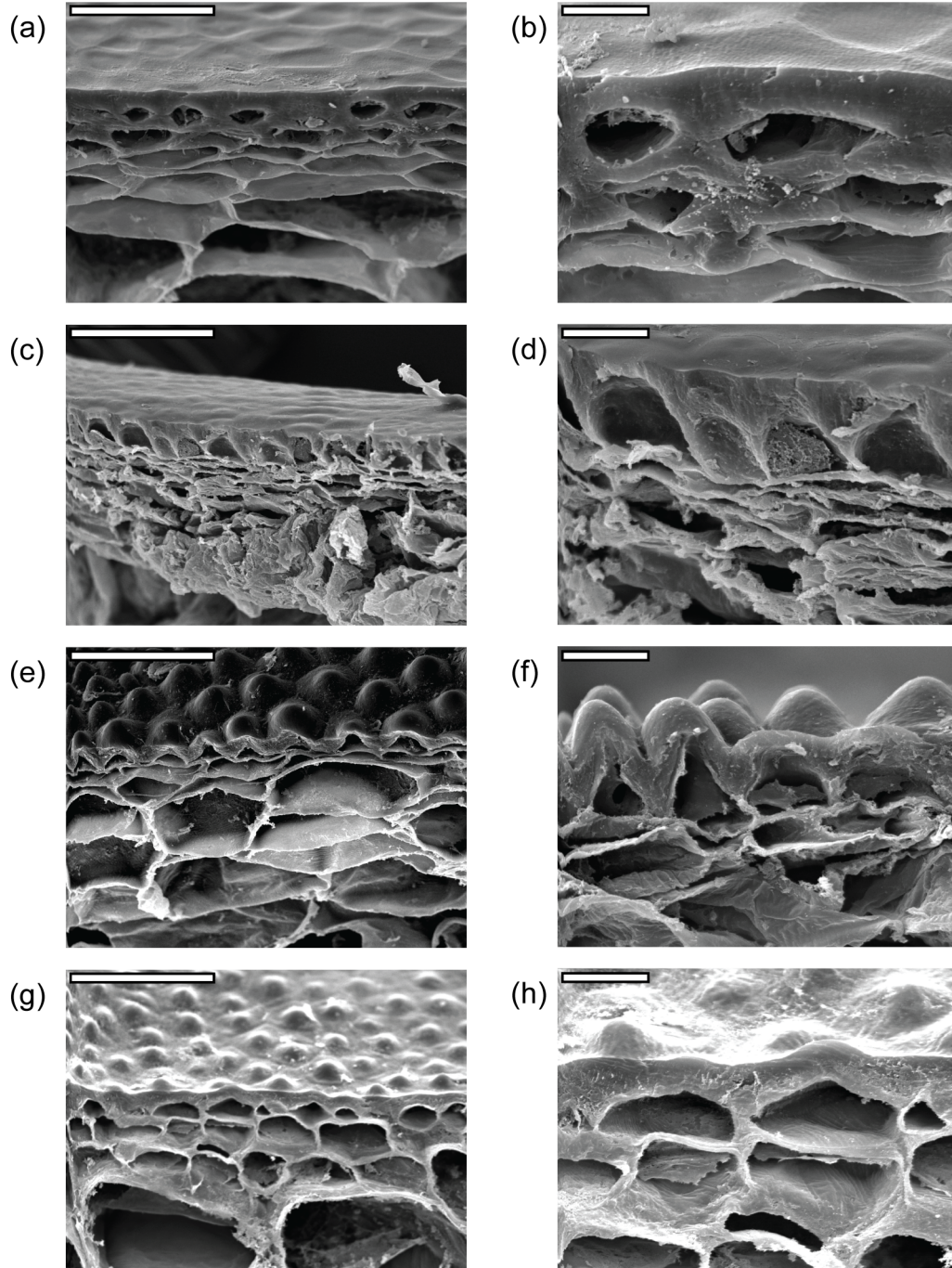


Figure S1. SEM micrographs of pericarp of selected *Solanum* species. (a-b). *S. lycopersicum*. (c-d). *S. pimpinellifolium*. (e-f). *S. chmielewskii*. (g-h). *S. habrochaites*.

Scale bars are 100 μm for a, c, e and g and 20 μm for b, d, f and h.

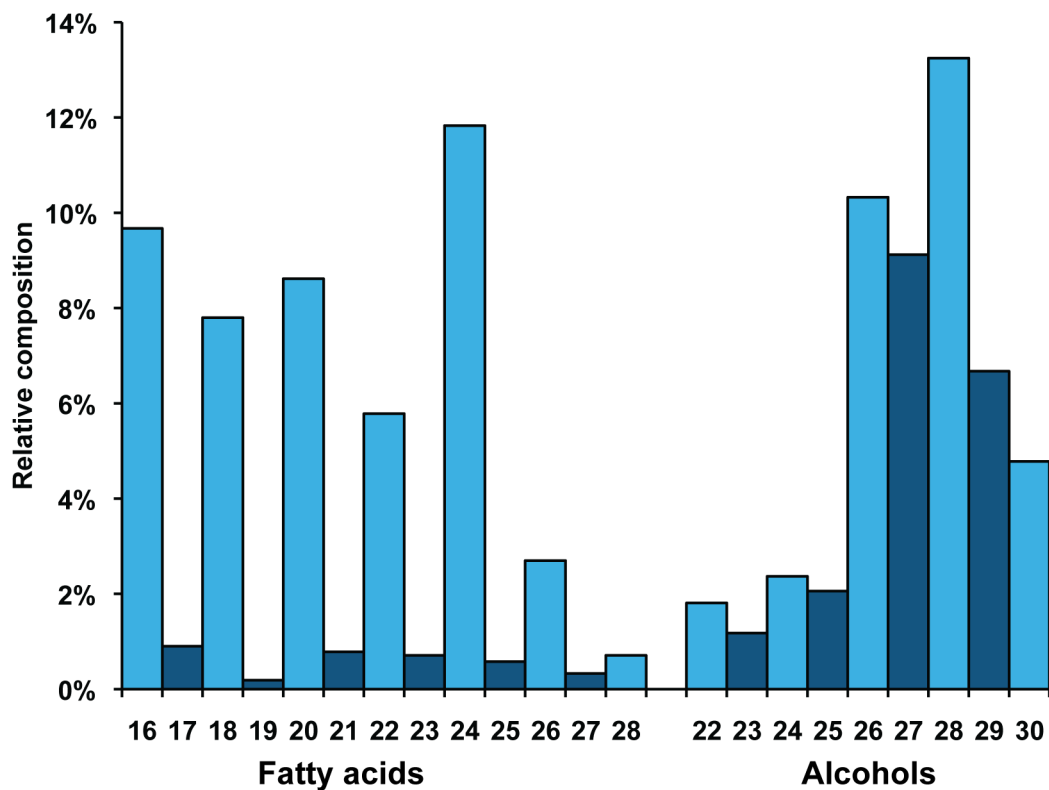


Figure S2. Chain length distribution of fatty acid and alcohol constituents of the wax ester fraction from *S. neorickii*. The wax esters were purified by TLC and methanolized with sodium methoxide and the resulting fatty acid methyl esters and alcohols (as TMS ethers) were analyzed by GC.