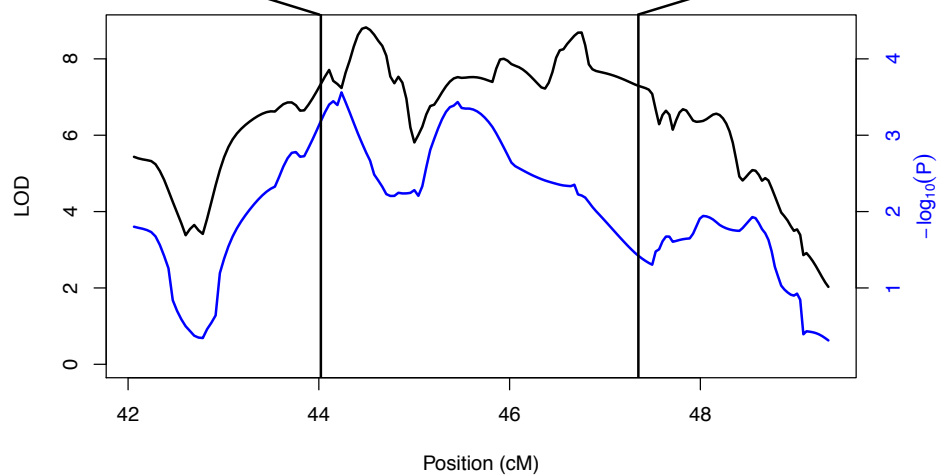


AMPD1



QTL A

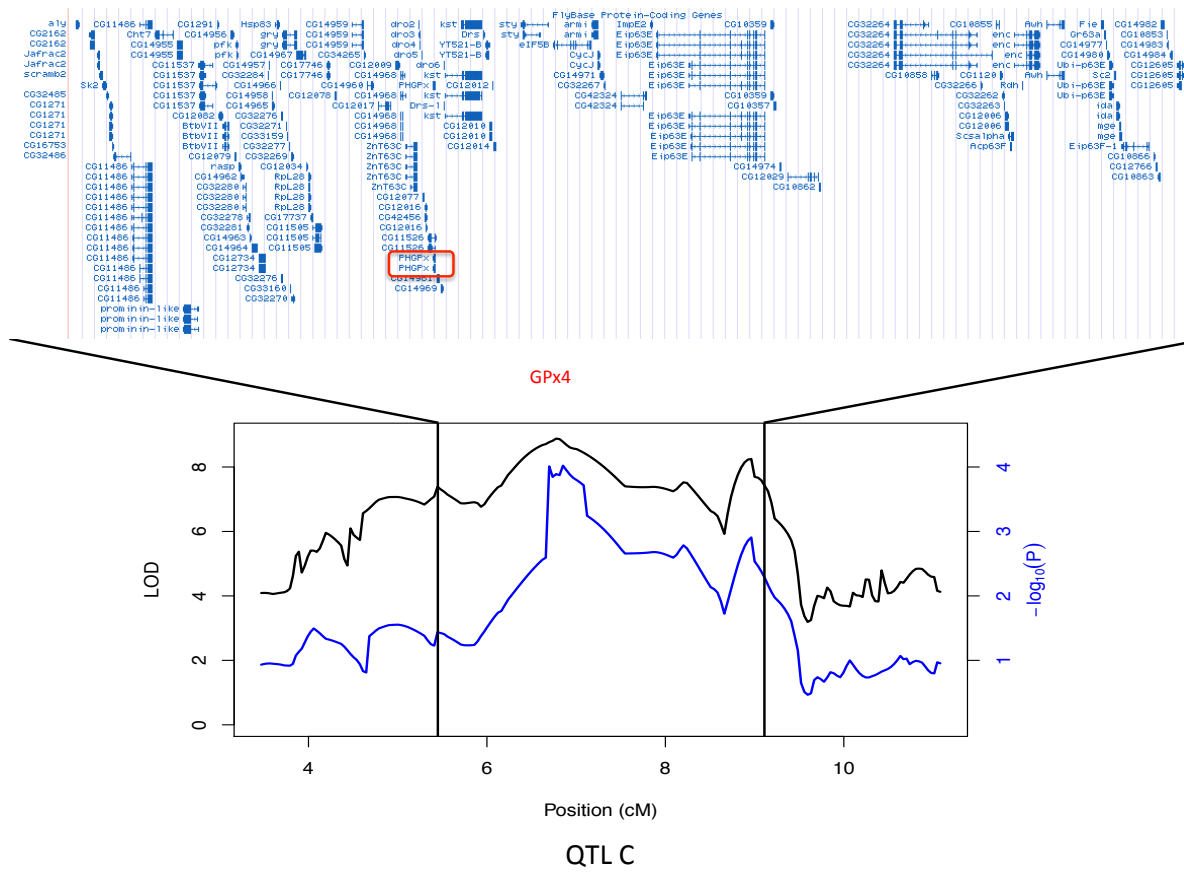


Figure S3 Santa Cruz Genome Browser for Bayesian Credible Intervals (Table 1) for QTLs A-C. QTL D spans a centromere so is poorly resolved. For QTLs A&B the *Drosophila* orthologs of a priori human candidate genes is circled in red with the associated human gene name also in red. For QTL C the novel candidate gene is circled in red, with the associated human genes name also given.