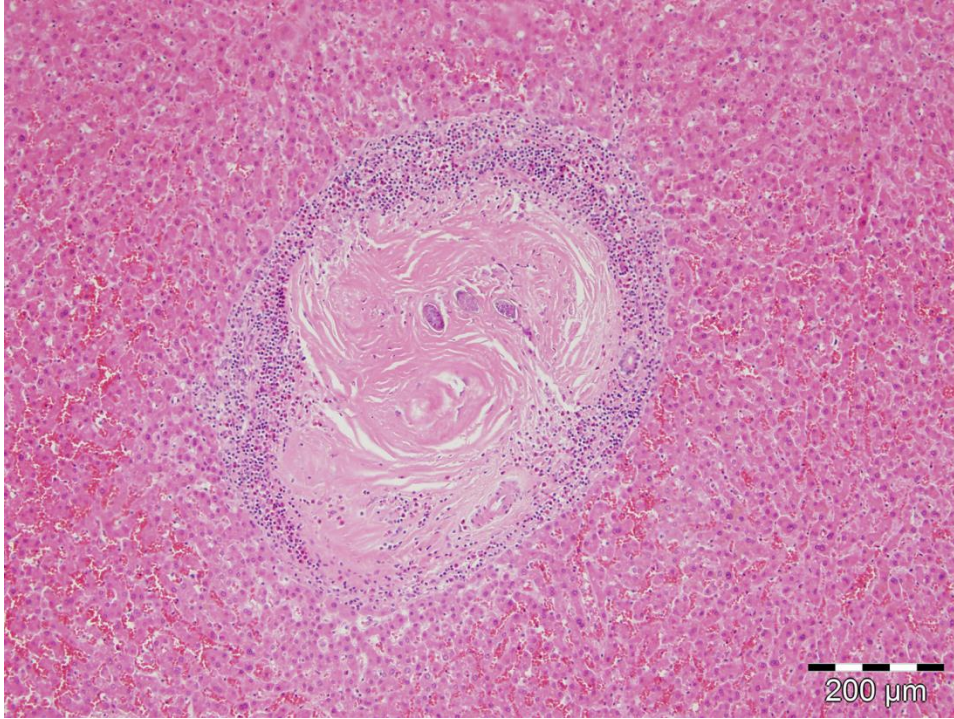


Autochthonous Human Schistosomiasis, Malaysia

Technical Appendix



Technical Appendix Figure 1. Places of residence in Peninsular Malaysia (left) of the schistosomiasis-infected Orang Asli from the 1970s. The origin of the patient from the current report is marked with a red X in a circle; previous cases are marked with green Xs without circles. Three cases in persons also infected with *Schistosoma japonicum*-like eggs in Sabah, Malaysian Borneo (right), were immigrants and thus not considered autochthonous.



Technical Appendix Figure 2. Section of liver showing a helminth egg granuloma. The ova are embedded in fibrous tissue surrounded by a wall of eosinophils, lymphocytes, and monocytes. Hematoxylin and eosin stain, original magnification $\times 10$.