



Clinical and imaging services for TIA and minor stroke in the UK – results of two clinical surveys

Journal:	<i>BMJ Open</i>
Manuscript ID:	bmjopen-2013-003359
Article Type:	Research
Date Submitted by the Author:	07-Jun-2013
Complete List of Authors:	Brazzelli, Miriam; University of Aberdeen, Shuler, Kirsten; University of Edinburgh, Quayyum, Zahidul; University of Aberdeen, Hadley, Donald; University of Glasgow, Muir, Keith; University of Glasgow, McNamee, Paul; University of Aberdeen DeWilde, Janet Dennis, Martin; Neurosciences Trials Unit Sandercock, Peter; University of Edinburgh, Wardlaw, Joanna; University of Edinburgh, Brain Research Imaging Centre
Primary Subject Heading:	Neurology
Secondary Subject Heading:	Emergency medicine, Geriatric medicine, Health services research, Cardiovascular medicine, Radiology and imaging
Keywords:	Stroke < NEUROLOGY, Computed tomography < RADIOLOGY & IMAGING, Neuroradiology < NEUROLOGY, ACCIDENT & EMERGENCY MEDICINE

SCHOLARONE™
Manuscripts

only

1
2
3 **Title:** Clinical and imaging services for TIA and minor stroke– results of two surveys of practice
4
5 across the UK
6
7

8
9 **Authors:** Miriam Brazzelli,^{1,2} Kirsten Shuler,^{1,4} Zahid Quayyum,² Donald Hadley,^{3,4} Keith Muir,^{3,4}
10
11 Paul McNamee,² Janet De Wilde,^{4,5} Martin Dennis,¹ Peter Sandercock,^{1,4} Joanna M Wardlaw.^{1,4}
12
13

14
15 **Affiliations:** ¹Centre for Clinical Brain Sciences, University of Edinburgh, Edinburgh, EH4 2XU,
16
17 UK; ² Health Services Research Unit, University of Aberdeen, Aberdeen, AB25 2ZD, UK; ³Institute
18
19 of Neurological Sciences, University of Glasgow, Glasgow, UK; ⁴Scottish Imaging Network, A
20
21 Platform for Scientific Excellence (SINAPSE), Edinburgh, EH4 2XU, UK; ⁵The Higher Education
22
23 Academy, Innovation Way, York Science Park, York, YO10 5BR.
24
25

26
27 **Correspondence to:** Joanna M Wardlaw, Bramwell Dott Building, Western General Hospital, Crewe
28
29 Road, Edinburgh, EH4 2XU, UK, tel +44 131 537 2943, fax +44 131 332 5150, email
30
31 Joanna.wardlaw@ed.ac.uk
32
33

34
35 **Key words:** Stroke, CT, neuroradiology
36

37 **Word count:** 2405
38

39 **Article summary page 11**
40
41
42
43
44
45
46
47
48
49
50
51
52
53
54
55
56
57
58
59
60

ARTICLE SUMMARY

Article focus

- Is the current provision of stroke prevention clinical services adequate to meet the volume of work in the UK?
- Is access to brain and carotid imaging adequate to meet the demand and is imaging being used efficiently?
- Who is providing these services?

Key Messages

- Most responding centres had some form of rapid access stroke prevention clinic.
- Front line assessment was by nurses in nearly a third of clinics, but about half of patients have a TIA mimic which requires medical expertise for diagnosis.
- There was efficient use CT brain and carotid ultrasound imaging, but less good access to MR brain imaging and this was often used incorrectly or inefficiently.

Strengths and limitations

- The survey covered the whole of the UK and achieved a 45% response rate.
- Clinical and imaging services responses were highly concurrent.
- Services may be much worse in areas that did not respond.

ABSTRACT**Objectives**

Transient ischaemic attack (TIA) is a medical emergency requiring rapid access to effective, organised, stroke prevention. There are about 90,000 TIAs per year in the UK. We assessed whether stroke prevention services in the UK meet Government targets.

Design

Cross-sectional survey.

Setting

All UK clinical and imaging stroke prevention services.

Intervention

Electronic structured survey delivered over the web with automatic recording of responses into a database. Reminders to non respondents. The survey sought information on clinic frequency, staff, casemix, details of brain and carotid artery imaging, medical and surgical treatments.

Results

114 stroke clinical and 146 imaging surveys were completed (both response rates 45%). Stroke prevention services were available in most (97%) centres but only 31% operated 7 days per week. Half of clinic referrals were TIA mimics, most patients (75%) were prescribed secondary prevention prior to clinic referral, and nurses performed the medical assessment in 28% of centres. CT was the most common and fastest first-line investigation; MR, used in 51% of centres, mostly after CT, was delayed up to two weeks in 26%; 51% of centres omitted blood-sensitive (GRE/T2*) MR sequences. Carotid imaging was with ultrasound in 95% of centres and 59% performed endarterectomy within one week of deciding to operate.

Conclusions

Stroke prevention services are widely available in the UK. Delays to MRI, its use in addition to CT while omitting key sequences to diagnose haemorrhage, limit the potential benefit of MRI in stroke prevention, but inflate costs. Assessing TIA mimics requires clinical neurology expertise yet nurses run 28% of clinics. Further improvements are still required for optimal stroke prevention.

BACKGROUND

TIA and minor stroke are medical emergencies. In the UK there are 80,000 to 90,000 TIAs and minor strokes every year.[1, 2] The benefit of medical or surgical treatment to prevent recurrent stroke after TIA is greatest if given as early as possible;[3-5] the benefit falls rapidly with increasing delay.[6, 7] Patients with TIA and minor stroke need a rapid, comprehensive assessment and active management to reduce the short and long term risks of recurrent stroke. Establishing an accurate diagnosis and delivering effective stroke prevention is challenging and requires organised stroke services. NHS Improvement in England introduced tariffs to encourage the establishment of stroke prevention services which meet key performance criteria; there are supplementary tariffs for achieving optimum management of high risk TIA patients, including use of MRI.[8, 9] We surveyed UK clinical and imaging secondary stroke prevention services to determine their performance against recent guidelines.[10]

METHODS

We devised two electronic survey questionnaires, one for clinical stroke prevention services and one for imaging services using the online survey software 'SurveyMonkey' (www.surveymonkey.com). These were informed by previous questionnaires sent to stroke services which achieved high response rates.[11-13] We used a 'closed', 'structured' response format. Both questionnaires provided information on the rationale and purpose of the study, including details of the research team, and incorporated best research practice issues such as confidentiality and informed consent.

Following pilot testing, the agreed versions of the survey questionnaires (available on request) contained detailed questions addressing the current provision of stroke prevention services (56 questions) and imaging services (47 questions) focusing on the volume of work, capacity, professionals involved, type and timing of brain and carotid imaging (within or outside normal office hours, for inpatients or outpatients), and carotid endarterectomy rates. We considered eligible participants to be all clinical leads of UK stroke services and radiology departments.

1
2
3 We offered no incentives to participate in the surveys. The responses were completely anonymous
4 and completion was voluntary hence approval of Ethics Committees was not required. We sent letters
5 of invitation explaining the objectives and providing links to access the questionnaires online in April
6
7
8
9
10
11
12
13
14
15
16
17
18
19
20
21
22
23
24
25
26
27
28
29
30
31
32
33
34
35
36
37
38
39
40
41
42
43
44
45
46
47
48
49
50
51
52
53
54
55
56
57
58
59
60

We offered no incentives to participate in the surveys. The responses were completely anonymous and completion was voluntary hence approval of Ethics Committees was not required. We sent letters of invitation explaining the objectives and providing links to access the questionnaires online in April 2011 by email or post, via multiple routes, to all UK stroke clinical leads and Radiology Directorates, including: stroke leads of all 15 NHS Boards in Scotland through the Scottish Stroke Care Audit; the 27 stroke networks (with three to nine clinical sites within each network) through NHS Improvement following contact with the Department of Health; to Stroke Leads in Trust Hospitals through the Royal College of Physicians Sentinel Stroke Audit database; to Radiology Directorate Leads in England through NHS Improvement and the Magnetic resonance National Evaluation Team (MagNET) database; all 12 Scottish Clinical Directors of Radiology through the Diagnostic Imaging Clinical Network; and to clinical and imaging stroke services in Wales through the Stroke Collaborative. The surveys went to 171 Acute Trusts, 129 Foundation Trusts, and seven Welsh Trusts and hospitals in the 15 NHS Boards in Scotland. Details of the surveys and the online links were also disseminated through the Royal College of Physicians website and advertised through the NHS Improvement Stroke and Radiology newsletters. Reminder messages were sent to non-respondents in June 2011.

Data management and analysis

The results of both internet surveys were reported according to the Checklist for Reporting Results of Internet E-Surveys (CHERRIES) statement.[14]

Surveys results were generated using SurveyMonkey software and entered into an Excel spreadsheet. We expressed the clinical leads' answers as proportions, medians, or means. Not all respondents answered all the questions, therefore the percentages reported are of the actual numbers of respondents. To calculate the response rate, we divided the number of clinical leads to whom we initially sent the invitation to participate by the number of participants who actually completed the online questionnaires. However, as both surveys were also disseminated and advertised through professional body websites and newsletters, it was not feasible to calculate the exact number of all

1
2
3 potential respondents contacted. The surveys were completed anonymously therefore it was not
4
5 possible to associate services with geographical location.
6
7

8 9 **RESULTS**

10
11 One hundred and fourteen Stroke Service surveys and 146 Imaging Service surveys were partially or
12
13 fully completed, a response rate of 45% for each.
14
15

16
17 **Stroke prevention clinics.** Among the 114 respondents, the mean catchment population was 400,000
18
19 people (median 300,000); 97% indicated that their hospital had a specialist stroke prevention clinic.
20
21 The service was run at least once a week in 99%; every weekday in 47%; and every day in 31%. Most
22
23 centres (86%, 88/102 respondents) saw between one and five new patients per clinic. In half of the
24
25 clinics (51/102 respondents), the estimated proportion of patients ultimately diagnosed as TIA/minor
26
27 stroke mimics was 41-60%; in 31% of centres it was between 60-79%. In only 16% of centres did
28
29 definite TIA/minor strokes make up the majority (61-100%) of attendees (figure 1).
30
31

32
33 Thirty-five percent of the TIA/minor stroke patients were seen by the stroke prevention clinic within
34
35 24 hours, 25% between 2-3 days, and about 20% within one week of their symptoms. Thirteen percent
36
37 of centres indicated that patients considered at high risk according to the ABCD2 risk prediction score
38
39 were seen within 24 hours of referral and low risk patients within seven days.
40
41

42
43 Most stroke prevention clinics were run by consultants (stroke physicians; neurologists; geriatricians).
44
45 However, the main medical assessment/triaging was undertaken by nurses in 28% of centres. The
46
47 final diagnosis was established either with input from, or by a consultant in 71% of centres.
48
49

50
51 In most centres, most patients seen at the specialist stroke prevention service had already been
52
53 prescribed secondary prevention drugs (e.g. aspirin; statins) for their recent suspected TIA/minor
54
55 stroke by their referring doctor (supplementary table 1).
56
57
58
59
60

Brain imaging of TIA/minor stroke

The stroke services survey showed that CT was routinely used as the main brain imaging modality in 84% (98/114 respondents) and that MRI was used in only 51% of centres for stroke prevention. This concurred very closely with the imaging services survey which showed that CT was the main modality in most departments (86%, 49/57 respondents). Details of access to CT and MR are provided in supplementary Tables 2 and 3. The stroke prevention and imaging surveys both also showed that most patients were having CT as first line test (figure 2a and figure 2b). The proportion of TIA/minor stroke patients for whom a subsequent MRI was requested after an initial CT varied considerably (range 0%-60%) (supplementary figure 1), the waiting time for MR after CT being one month in about half of centres (47%). The results of brain imaging were returned to the stroke service on the day of scanning in 66% of centres; for 22%, however, it took more than 2 days. In most centres (76%), positive brain imaging results (e.g. haemorrhage) were provided to the stroke prevention clinic immediately.

The routine MR sequences used for TIA/minor stroke were primarily focused on detecting ischaemia: T1-weighted or T2-weighted, diffusion-weighted imaging (DWI), and Fluid Attenuated Inversion Recovery (FLAIR) sequences. Fewer than half of the departments (49%) performed sequences that are sensitive to haemorrhage (e.g. gradient echo, GRE/T2*, supplementary figure 2). Some departments (18%) used only DWI and T2-weighted sequences routinely, thus limiting the chance of detecting either cerebral haemorrhage or non-vascular brain lesions that mimic stroke/TIA.

Carotid artery imaging and endarterectomy

Carotid artery imaging most frequently took place the day of the clinic (47%, 47/100 respondents). Doppler ultrasound (DUS) was the first line carotid/vertebral imaging in most centres (95%). Most centres (80%) provided the results of carotid artery imaging on the same day, and most centres (86%; 85/99 respondents) provided important positive results immediately. A repeat DUS (19%), or CTA (60%) or contrast MRA (41% of centres) were used as confirmatory tests prior to referral for endarterectomy.

1
2
3
4
5 The time between the decision to perform a carotid endarterectomy and the actual surgical procedure
6 was less than one week in 59% of centres and between one and three weeks in approximately 37% of
7 centres (supplementary figure 3). No stroke service performed endarterectomy more than six months
8 after the decision to operate.
9
10

11 12 13 14 15 **Workload volume and capacity**

16
17 During 2010, on average 4,905 CT brain scans were performed per radiology department (range 20-
18 48,346; median 2,500), 18% were conducted out-of-hours but with considerable variation. On average
19 686 CT brain scans were for patients with suspected TIA/minor stroke (range 0-5,000 scans; median
20 200 scans), i.e. about 14% of the total workload. On average, 9% of these CT scans were performed
21 out-of-hours (range 0-60% scans; median 2% scans).
22
23
24
25
26
27

28
29 During 2010, on average 2,888 brain MR images were performed per radiology department (range 20-
30 24,391 scans; median 1,530 scans), only 3% of MR scans were conducted out-of-hours (most
31 performed no MR brain imaging out-of-hours). On average, 258 MR brain scans were conducted on
32 patients suspected of TIA/minor stroke (range 0-1,200 scans; median 100 scans), ie about 9% of the
33 total workload.
34
35
36
37
38
39

40
41 Forty-three percent of the stroke prevention centres indicated that they had spare capacity to see
42 further patients. Responses varied as to what extra facilities were required to expand the current stroke
43 service (figure 3), 'more consultants' being the most frequent, but 'more carotid imaging' was
44 required in 53%. When 'more brain imaging' was chosen, all respondents opted for more MRI (38/38
45 respondents) rather than CT (14/38).
46
47
48
49
50
51

52 53 **DISCUSSION**

54
55 These simultaneous surveys of stroke prevention clinics and imaging services indicate that the
56 necessary components of stroke prevention services are widely available in the UK, but their structure
57
58
59
60

and organisation vary considerably and an important proportion of practice remains suboptimal (Table 1). In most centres (78%), specialist stroke prevention services operate every weekday with on average five new patients attending each clinic yet only 60% of patients were seen within one week of their event. Additionally, over half the case-load are patients with a final diagnosis of a non TIA/minor stroke ‘mimic’. Specialist medical knowledge is required for accurate diagnosis and appropriate medical management of this very heterogeneous case-mix, yet in a quarter of clinics, the main assessment is by nurses.

Table 1. Key findings.

- Nurses provide the primary assessment and diagnosis in nearly a third of clinics;
- 50% of patients attending these clinics have TIA/minor stroke mimic;
- Most patients (75%) have already started secondary prevention treatment before attending the clinic;
- CT for TIA and minor stroke is widely available (94%), is the first line test in the vast majority of centres, and is routinely used in 82%;
- MR is available for TIA and minor stroke patients in 88% of centres but in about half of those it is after an initial CT scan
- There are long delays to MR imaging;
- The key MR sequence needed to diagnose haemorrhage is omitted in more than half of centres, reducing the value of MR;
- Ultrasound is the primary carotid imaging test in 95% of centres;
- There is limited capacity to undertake more imaging although about 40% of stroke services indicated that they had capacity to see more patients; however the main barrier to seeing more patients was the limited availability of MR.

The consistency between the clinical services’ and imaging departments’ responses to the question about first line imaging method is striking (figure 2a and figure 2b). Both CT and MR are widely available but access to CT is more rapid and more complete than for MR, particularly outside normal office hours and for outpatients (Supplementary tables 2 and 3). MR was commonly performed in addition to and after CT – possibly somewhat inappropriately since the diagnostic yield from MR for ischaemic lesions on diffusion imaging declines rapidly with time after the event.[15] Furthermore, in more than half the centres, the key MR sequence required to identify haemorrhage accurately (i.e.

1
2
3 GRE/T2* or equivalent) was omitted (Supplementary figure 2),[16] increasing the risk that
4 haemorrhages would be misdiagnosed as ischaemic events[17] (one of the two main reasons for brain
5 imaging in TIA/minor stroke) leading to these patients receiving potentially inappropriate
6 antithrombotic or anticoagulant treatment or even offered inappropriate carotid endarterectomy. Some
7 centres that only use DWI and T2 are also likely to miss some stroke/TIA mimics that could otherwise
8 be diagnosed with MR (the other of the two main reasons for brain imaging in TIA/minor stroke).
9 Most patients had already been started on secondary prevention by their GPs before they reached the
10 clinic (supplementary table 1), further questioning the value of MR performed in addition to CT,
11 especially as the MR was frequently too late to be of great diagnostic utility.
12
13
14
15
16
17
18
19
20
21
22

23 The surveys confirmed that Doppler ultrasound is the main carotid imaging for TIA (95%) not MRA
24 or CTA, perhaps reflecting that the potential for a 'combined brain and carotid' examination (e.g.
25 CT+CTA or MR+MRA) is not practical in most centres. In 59% of stroke services, endarterectomy
26 was performed within one week of the decision to operate. The decreasing delay to surgery is
27 encouraging and in line with guidelines and recent audit reports,[18] but the persistence of delays of
28 up to a month in nearly 40% of patients remains a concern.
29
30
31
32
33
34
35
36
37

38 The surveys were targeted to clinical leads of stroke prevention services and radiology departments.
39 Response rate for both surveys was 45% which we considered satisfactory for such a survey. The
40 strengths include our use of several mechanisms to prevent sampling bias and increase response rate.
41 We used multiple routes to access all stroke and imaging services clinical leads in the UK and web-
42 based questionnaires for ease of completion. We sent reminders to non-respondents. We reported our
43 findings according to standard methodology (i.e. CHERRIES checklist). We provided web and paper
44 surveys to assist respondents. We based these surveys on several previous surveys of stroke services
45 that achieved high response rates.[11-13]
46
47
48
49
50
51
52
53
54

55 There were also limitations. The survey was anonymous and voluntary so we are not able to chart
56 service distribution across the UK. We cannot exclude the possibility that some centres submitted two
57
58
59
60

1
2
3 surveys. To protect the anonymity of the participants we also did not request full demographic details,
4
5 so were unable to compare respondents with non-respondents. Our findings may, therefore, not apply
6
7 to all stroke prevention services. Although both internet surveys provided invaluable data to picture
8
9 current clinical practice, some data were not routinely collected in all centres and respondents were
10
11 only able to estimate some answers. Not all respondents answered all questions. Even though the 45%
12
13 response rate for both surveys can be considered satisfactory, we cannot be sure to have captured the
14
15 full range of performance with respect to current stroke service provision.
16
17

18
19 There are no other current nation-wide data on clinical services or imaging for stroke prevention in
20
21 the UK or from other countries. MR usage for stroke is rising rapidly in many countries. For example,
22
23 MR use rose by 235% in 10 states in the USA from 1999 to 2008,[19] making diagnostic imaging the
24
25 single fastest growing component of hospital costs rising by 213% from 1999 to 2008 in the USA.[19]
26
27 MR was used in addition to CT in about half of the patients, a similar pattern to that found in our
28
29 survey. The use of several imaging tests will increase delays and further impede rapid access to
30
31 imaging. The increase in use is occurring despite a lack of evidence in a recent systematic review that
32
33 MR significantly changed management, or any randomised trials, case-control or cohort studies of
34
35 imaging strategies to justify its increased use.[20]
36
37

38
39 We suggest that use of expensive resources in TIA/minor stroke, such as brain imaging, could be
40
41 improved by ensuring that patients only have either CT or MR but not both. Where MR is used, then
42
43 it should be used as fast as possible (beyond a few days after the TIA/minor stroke is unlikely to
44
45 detect recent ischaemia and would be a waste of time for that purpose) and diagnostic sequences
46
47 should include those appropriate to avoid misdiagnosing haemorrhage or TIA/minor stroke mimics;
48
49 this is particularly critical if MR is used in patients whose presentation is delayed beyond seven days
50
51 when CT will not differentiate haemorrhage. Further consideration should be given to whether
52
53 widespread use of nurse triage is the most effective way of dealing with complex TIA/minor stroke
54
55 mimics which generally require some considerable medical experience to differentiate from true
56
57 TIA/minor stroke.
58
59
60

AUTHOR CONTRIBUTIONS

JM Wardlaw, M Dennis, P Sandercock conceived the idea for the study and secured funding; M Brazzelli, Z Quayum and JM Wardlaw drafted the survey; D Hadley, K Muir, P McNamee, J DeWilde, M Dennis and P Sandercock tested and edited the survey; M Brazzelli and K Shuler set up the final version of the survey into the survey software; M Dennis, JM Wardlaw, M Brazzelli and J De Wilde disseminated the survey as widely as possible; K Shuler and M Brazzelli downloaded the responses, collated and analysed the results; all authors interpreted the results; M Brazzelli and JM Wardlaw drafted the paper; all authors contributed critical comments and edited the manuscript; all authors gave their final approval for submission of the manuscript; JM Wardlaw was the principal investigator and takes full responsibility for the integrity and accuracy of the work. Thus all authors fulfil all three ICMJE criteria for authorship: 1) substantial contributions to conception and design, acquisition of data, or analysis and interpretation of data; 2) drafting the article or revising it critically for important intellectual content; 3) final approval of the version to be published.

ACKNOWLEDGEMENTS

We thank the following for their assistance in circulating the questionnaires: Dr Damian Jenkinson, Stroke Advisor, Dept of Health; Ian Golton, Barbara Zutshi, NHS Improvement Stroke Improvement Programme; Prof Tony Rudd and Ms Alex Hoffman, Royal College of Physicians London Sentinel Stroke Audit Office; the clinical leads of all 27 Stroke networks clinical leads in England; the Scottish Stroke Care Clinical Leads; NHS Improvement Database for Radiology Departments in England (Gail Powell); the MagNET Database; Prof Ian Robertson, Mr James Cannon, the Diagnostic Imaging Clinical Network, Scotland; the Scottish Radiological Society; All Scottish Regional Imaging Services Leads; Michelle Price, Stroke Collaborative, Wales; all imaging and clinical leads for stroke services in Wales.

COMPETING INTERESTS

The authors acknowledge funding for the study from the UK National Institutes of Health Research Health Technology Assessment Programme (salary for MB, ZQ). JMW and KM were supported by

1
2
3 the SINAPSE Collaboration. All authors had full unrestricted access to all the study data. The views
4
5 are those of the authors and not those of the funding agency. There are no other competing interests.
6
7 JMW takes responsibility for the integrity of the data and the accuracy of the data analysis.
8
9

10 11 **FUNDING**

12
13 The work was funded by the UK National Institutes of Health Research Health Technology
14
15 Assessment Programme (09/22/169). The SINAPSE Collaboration is funded by the Scottish Funding
16
17 Council. The Brain Research Imaging Centre is supported by NHS Lothian Research and
18
19 Development Office.
20

21 22 **DATA SHARING**

23 Further data from the survey are available to others upon request. This may provide
24
25 more details or opportunity for more in depth analysis than were relevant to the
26
27 present paper. We are happy to provide these data.
28
29
30
31
32
33
34
35
36
37
38
39
40
41
42
43
44
45
46
47
48
49
50
51
52
53
54
55
56
57
58
59
60

References

- 1 Coull AJ, Lovett JK, Rothwell PM, et al. Population based study of early risk of stroke after transient ischaemic attack or minor stroke: implications for public education and organisation of services. *BMJ* 2004;**328**:326.
- 2 Giles MF, Rothwell PM. Substantial underestimation of the need for outpatient services for TIA and minor stroke. *Age Ageing* 2007;**36**:676-80.
- 3 Wasserman J, Perry J, Dowlatshahi D, et al. Stratified, urgent care for transient ischemic attack results in low stroke rates. *Stroke* 2010;**41**:2601-5.
- 4 Rothwell PM, Giles MF, Chandratheva A, et al. Effect of urgent treatment of transient ischaemic attack and minor stroke on early recurrent stroke (EXPRESS study): a prospective population-based sequential comparison. *Lancet* 2007;**370**:1432-42.
- 5 Lavalley PC, Meseguer E, Abboud H, et al. A transient ischaemic attack clinic with round-the-clock access (SOS-TIA): feasibility and effects. *Lancet Neurol* 2007;**6**:953-60.
- 6 Bejot Y, Zeller M, Lorgis L, et al. Secondary prevention in patients with vascular disease. A population based study on the underuse of recommended medications. *J Neurol Neurosurg Psychiatry* 2013;**84**:348-53.
- 7 Sandercock PAG. Should I start all my ischaemic stroke and TIA patients on a statin, an ACE inhibitor, a diuretic, and aspirin today? *J Neurol Neurosurg Psychiatry* 2003;**74**:1461-4.
- 8 Department of Health Knowledge & Intelligence Branch. Technical Guidance for the 2011/12 Operating Framework. London: Crown 2011:1-261.

- 1
2
3 9 Department of Health Payment by Results team. Payment by Results Guidance for 2011-12.
4
5 London: Crown 2011:1-136.
6
7
8
9 10 National Institute for Health and Clinical Excellence (NICE). Stroke. The diagnosis and acute
10
11 management of stroke and transient ischaemic attacks. London: National Institute for Health and
12
13 Clinical Excellence 2008:1-37.
14
15
16
17 11 Kane I, Whiteley WN, Sandercock PA, et al. Availability of CT and MR for assessing patients
18
19 with acute stroke. *Cerebrovasc Dis* 2008;**25**:375-7.
20
21
22
23 12 Wardlaw JM, Keir SL, Seymour J, et al. What is the best imaging strategy for acute stroke?
24
25 *Health Technol Assess* 2004;**8**:1-180.
26
27
28
29 13 Lindley RI, Amayo EO, Marshall J, et al. Hospital services for patients with acute stroke in the
30
31 United Kingdom: the Stroke Association survey of consultant opinion. *Age Ageing* 1995;**24**:525-
32
33 32.
34
35
36
37 14 Eysenbach G. Improving the quality of web surveys: the Checklist for Reporting Results of
38
39 Internet E-Surveys (CHERRIES). *J Med Internet Res* 2004;**6**:e34.
40
41
42
43 15 Moreau F, Modi J, Almekhlafi M, et al. Early magnetic resonance imaging in transient ischemic
44
45 attack and minor stroke: do it or lose it. *Stroke* 2013;**44**:671-4.
46
47
48
49 16 Dimigen M, Keir S, Dennis M, et al. Long-term visibility of primary intracerebral haemorrhage
50
51 on MRI. *J Stroke Cerebrovasc Dis* 2004;**13**:104-8.
52
53
54
55
56
57
58
59
60

- 1
2
3 17 Wardlaw JM, Keir SL, Dennis MS. The impact of delays in computed tomography of the brain on
4 the accuracy of diagnosis and subsequent management in patients with minor stroke. *J Neurol*
5 *Neurosurg Psychiatry* 2003;**74**:77-81.
6
7
8
9
10
11 18 Intercollegiate Stroke Working Party. National clinical guideline for stroke. London: Royal
12 College of Physicians 2012:1-208.
13
14
15
16
17 19 Burke JF, Kerber KA, Iwashyna TJ, et al. Wide variation and rising utilization of stroke magnetic
18 resonance imaging: data from 11 states. *Ann Neurol* 2012;**71**:179-85.
19
20
21
22
23 20 Burke JF, Gelb DJ, Quint DJ, et al. The impact of MRI on stroke management and outcomes: a
24 systematic review. *J Eval Clin Pract* Published Online First: 22 November 2012.doi:
25 10.1111/jep.12011.
26
27
28
29
30
31
32
33
34
35
36
37
38
39
40
41
42
43
44
45
46
47
48
49
50
51
52
53
54
55
56
57
58
59
60

FIGURE LEGENDS

FIGURE 1. Proportion of patients attending the stroke prevention clinic who were ultimately diagnosed as having TIA or minor stroke. 102/114 centres answered this question.

FIGURE 2. Proportion of patients suspected of TIA/minor stroke who had CT or MRI as first line brain imaging investigation.

A) Imaging services survey (55/146 responders).

B) Stroke prevention services survey (101/114 responders).

FIGURE 3. Resources needed to expand capacity in fully saturated stroke prevention services. 77/114 responded. Participants were asked to choose all suitable answers.

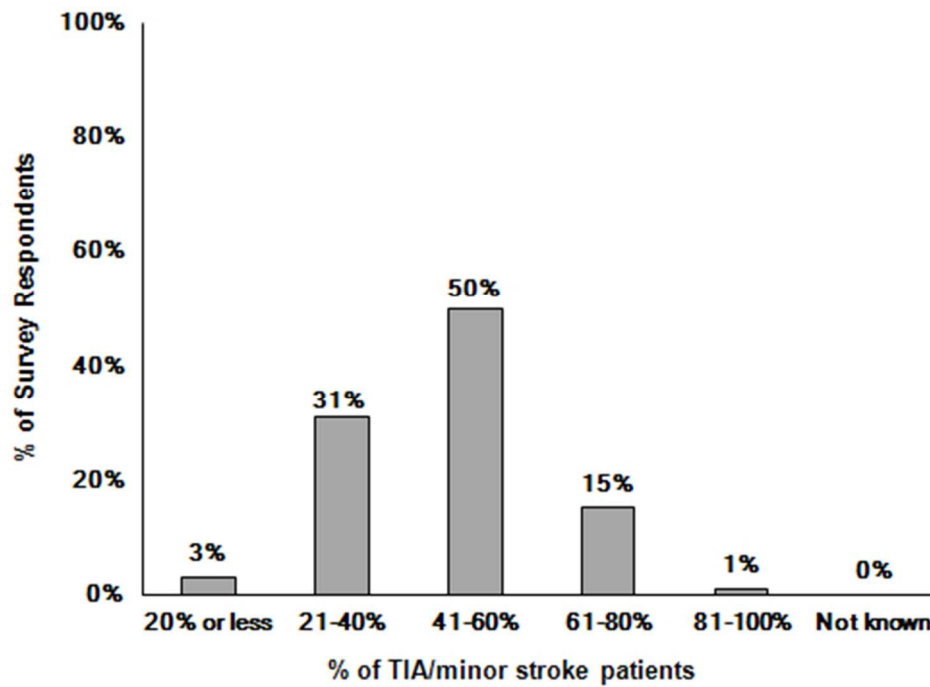


FIGURE 1. Proportion of patients attending the stroke prevention clinic who were ultimately diagnosed as having TIA or minor stroke. 102/114 centres answered this question.
43x31mm (300 x 300 DPI)

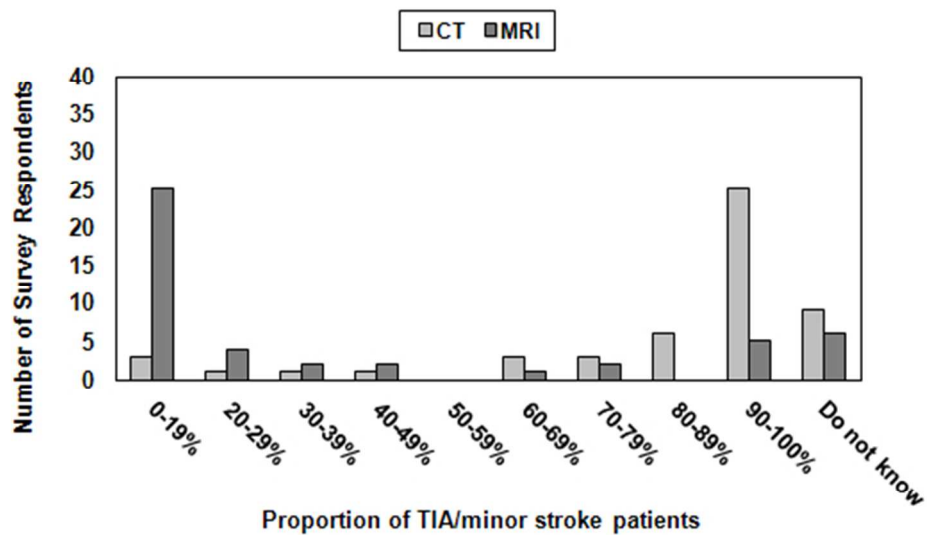


FIGURE 2. Proportion of patients suspected of TIA/minor stroke who had CT or MRI as first line brain imaging investigation.

A) Imaging services survey (55/146 responders).
47x29mm (300 x 300 DPI)

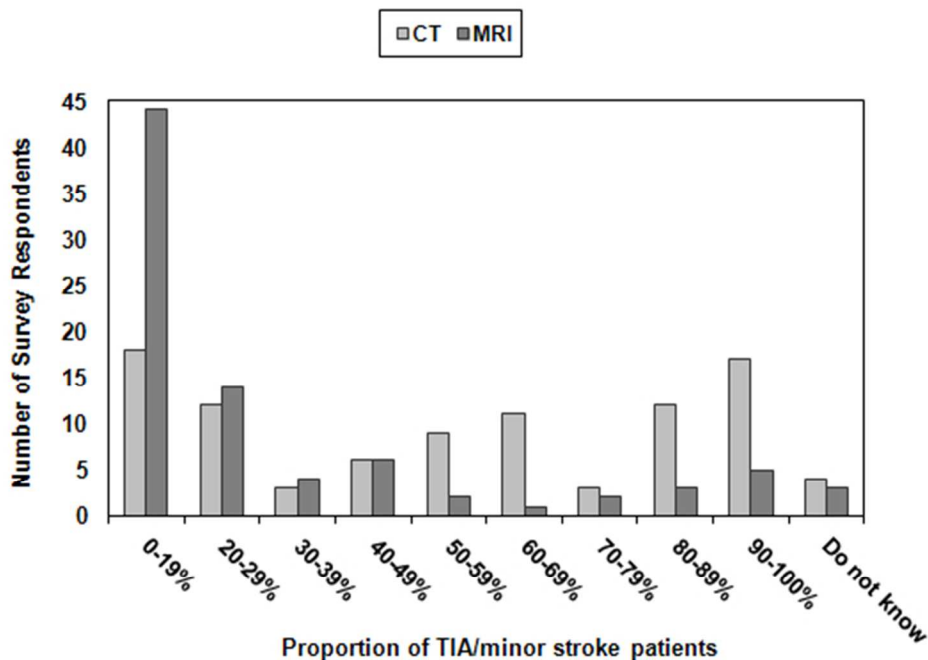


FIGURE 2. Proportion of patients suspected of TIA/minor stroke who had CT or MRI as first line brain imaging investigation.

B) Stroke prevention services survey (101/114 responders).

47x32mm (300 x 300 DPI)

For peer review only

1
2
3
4
5
6
7
8
9
10
11
12
13
14
15
16
17
18
19
20
21
22
23
24
25
26
27
28
29
30
31
32
33
34
35
36
37
38
39
40
41
42
43
44
45
46
47
48
49
50
51
52
53
54
55
56
57
58
59
60

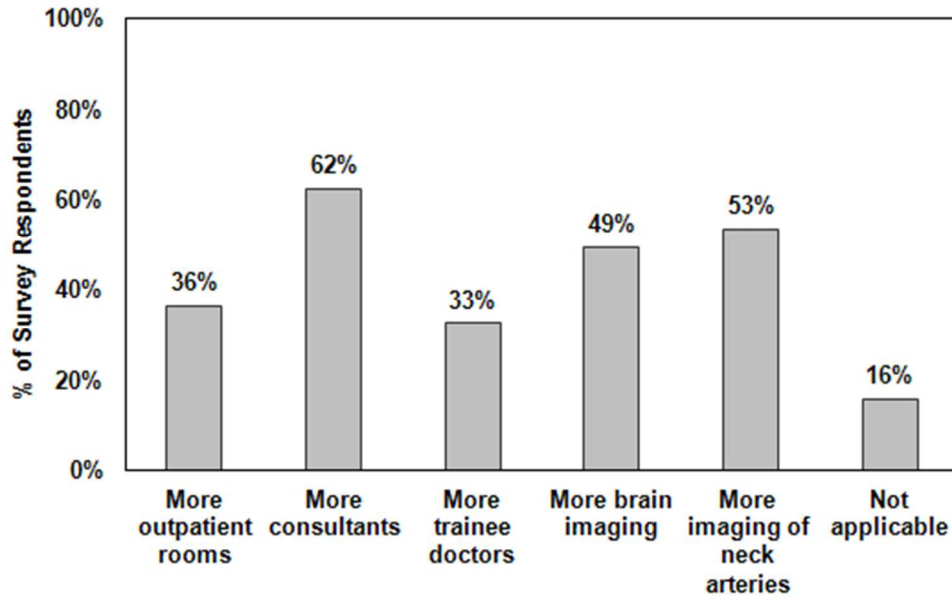


FIGURE 3. Resources needed to expand capacity in fully saturated stroke prevention services. 77/114 responded. Participants were asked to choose all suitable answers.
46x29mm (300 x 300 DPI)

SUPPLEMENTARY MATERIAL

Access to CT and MR brain scanning

The imaging services survey indicated that CT was available for TIA and minor stroke in 94% of departments (136/145 respondents) and accessible out-of-hours in 82%. MRI was available in 99% of imaging departments (133/134 respondents) and in 88% was available for TIA/minor stroke, but actual access to MR varied substantially between inpatients and outpatients and by whether the patient presented in or outside weekday office hours.

In most radiology departments that provided this information (49/56, 87%), inpatients and outpatients were managed differently. On weekdays in normal working hours, inpatients were mostly CT scanned and results provided immediately (Supplementary Table 2); of outpatients, only 59% were scanned with CT immediately or the same day and 32% waited 1-2 weeks. Outside normal weekday hours, inpatients could be CT scanned immediately in 67% of centres but was not available in 19%; outpatients commonly had CT scanning delayed by up to two weeks.

Access to MRI was more restricted, 61% (38/62) providing scanning for TIA/minor stroke on weekdays, during normal working hours without difficulty, but the rest with difficulty or not at all (Supplementary Table 3). During normal weekday hours, inpatients had MRI on the same or next day in 72% of centres (39/54 respondents), or within seven days in 26% of centres (14/54). Outpatients had MRI on the same or next day in 32% of centres (15/47 respondents), within 7-14 days in 55% of centres (26/47), and within one month in 11% of centres (5/47). Outside normal weekday hours, MR was not available or could only be performed with difficulty for TIA/minor stroke patients in most centres (48/58, 83% of centres) and could be performed without any difficulty in only 17% of centres (10/58). Out of hours, inpatients had MRI on the same or next day in 64% of centres (27/42), or within seven days in 29% of centres (12/42); outpatients had MRI on the same or next day in 32% of centres (11/35), within 4-14 days in 54% of centres (19/35) and within one month in 14% (5/35) (Table 3). Results for inpatients in normal weekday hours were generally provided immediately (83% of centres), but outpatients could wait up to seven days (27% of centres); reporting times for patients seen out of hours were longer.

Supplementary Table 1 Patients diagnosed as having TIA or minor stroke who had been prescribed secondary prevention drugs prior to attending the Stroke prevention clinic.

% of TIA minor stroke patients already on secondary prevention	% of stroke services (n/N) who answered affirmatively
20% or less	11% (11/100)
21-40%	8% (8/100)
41-60%	20% (20/100)
61-80%	24% (24/100)
81-100%	29% (29/100)

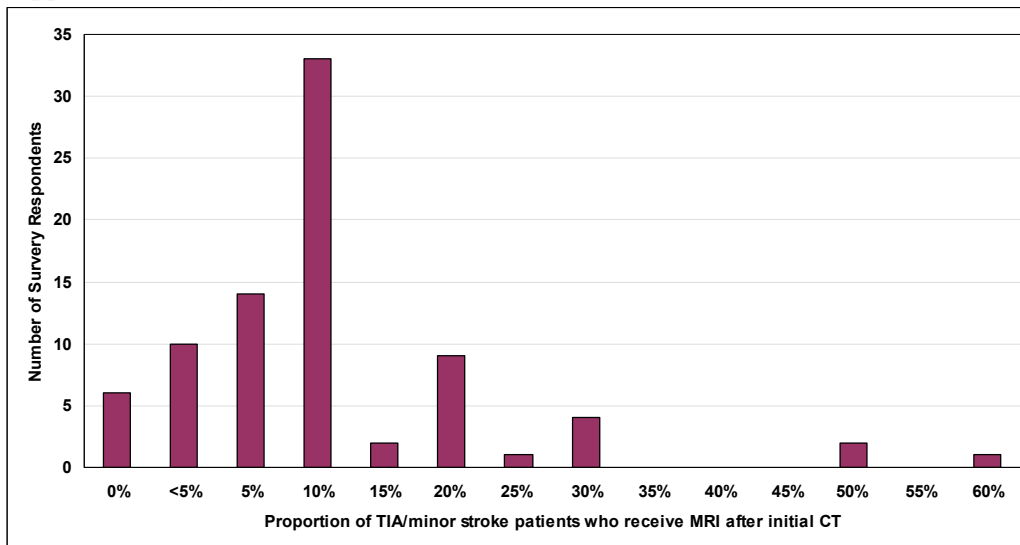
Supplementary Table 2. Operating hours of CT scanning

Weekly CT scanning (Monday to Friday during normal working hours)		
	<i>Inpatients % (n/N)</i>	<i>Outpatients % (n/N)</i>
Immediately	23% (13/56)	6% (3/51)
Same day	64% (36/56)	53% (27/51)
Next day	11% (6/56)	8% (4/51)
Within 1 week	2% (1/56)	18% (9/51)
Within 2 weeks	0%	14% (7/51)
Within 1 Month	0%	1% (1/51)
Weekend CT scanning (or outside normal working hours)		
	<i>Inpatients % (n/N)</i>	<i>Outpatients % (n/N)</i>
Immediately	17% (13/52)	12% (5/43)
Same day	48% (27/52)	26% (11/43)
Next day	33% (17/52)	28% (12/43)
Within 1 week	2% (1/52)	23% (10/43)
Within 2 weeks	0%	11% (5/43)
Within 1 Month	0%	0%

Supplementary Table 3. Operating hours of MR scanning among imaging departments

Weekly MR scanning (Monday to Friday during normal working hours)		
	<i>Inpatients % (n/N)</i>	<i>Outpatients % (n/N)</i>
Immediately	2% (1/54)	2% (1/47)
Same day	35% (19/54)	21% (10/47)
Next day	37% (20/54)	11% (5/47)
Within 1 week	20% (14/54)	30% (14/47)
Within 2 weeks	0%	25% (12/47)
Within 1 Month	0%	11% (5/47)
Weekend MR scanning (or outside normal working hours)		
	<i>Inpatients % (n/N)</i>	<i>Outpatients % (n/N)</i>
Immediately	5% (2/42)	0%
Same day	14% (6/42)	9% (3/35)
Next day	50% (21/42)	23% (8/35)
Within 1 week	29% (12/42)	40% (14/35)
Within 2 weeks	2% (1/42)	14% (5/35)
Within 1 Month	0%	14% (5/35)

Supplementary Figure 1. Use of MR after CT

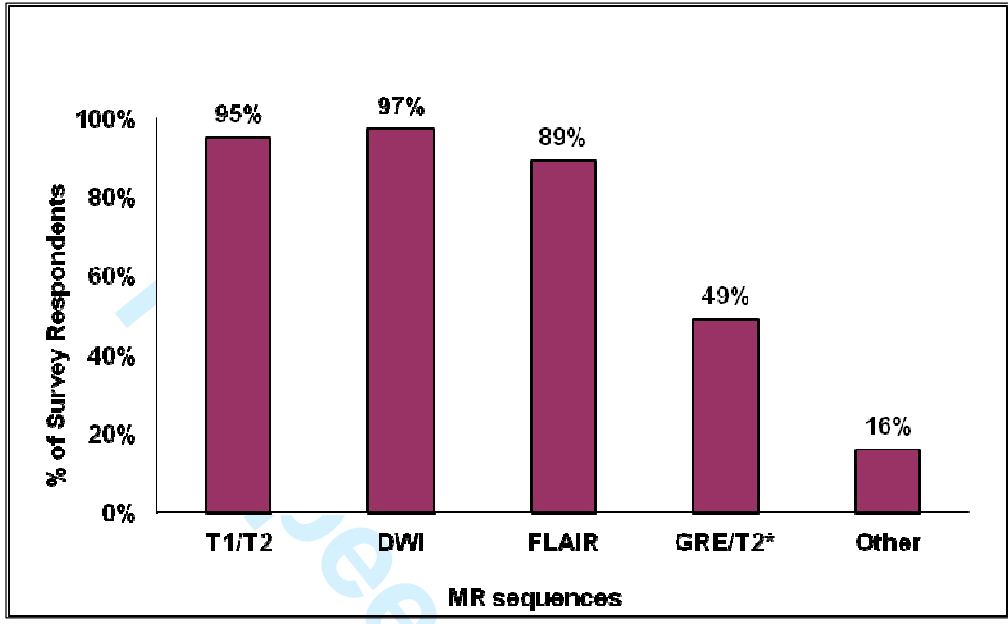


Peer review only

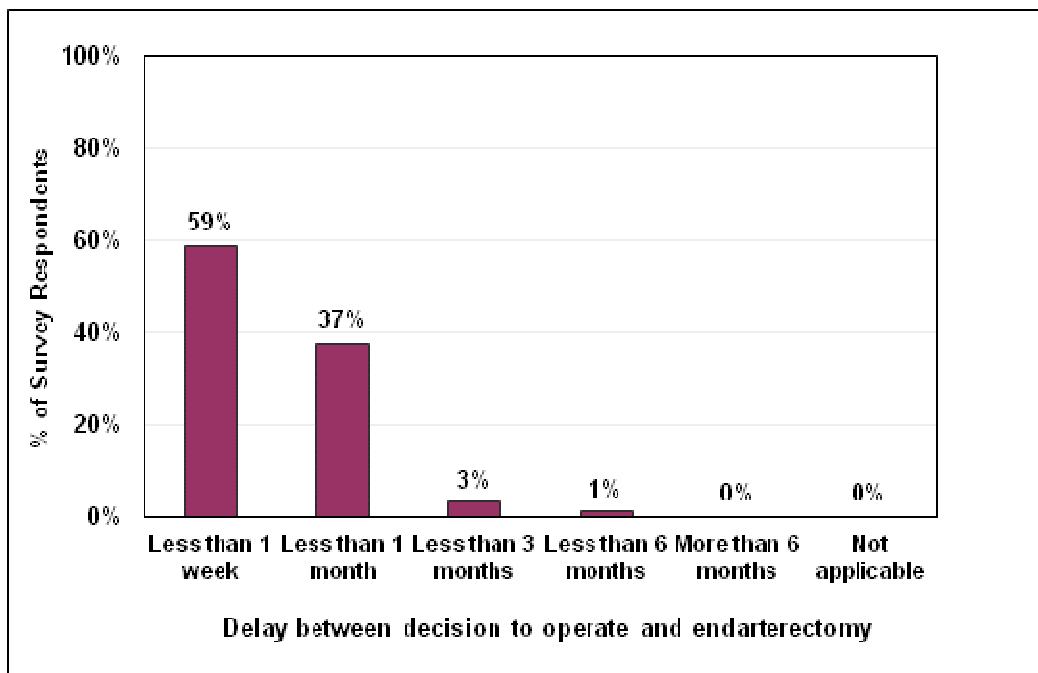
1
2
3
4
5
6
7
8
9
10
11
12
13
14
15
16
17
18
19
20
21
22
23
24
25
26
27
28
29
30
31
32
33
34
35
36
37
38
39
40
41
42
43
44
45
46
47
48
49
50
51
52
53
54
55
56
57
58
59
60

1
2
3
4
5
6
7
8
9
10
11
12
13
14
15
16
17
18
19
20
21
22
23
24
25
26
27
28
29
30
31
32
33
34
35
36
37
38
39
40
41
42
43
44
45
46
47
48
49
50
51
52
53
54
55
56
57
58
59
60

Supplementary Figure 2. MR sequences used to assess patients with suspected TIA/minor stroke in the surveyed radiology departments. 128/146 centres answered this question.



Supplementary Figure 3. Delay between the decision to perform endarterectomy and the surgical procedure (99/114 respondents).



<i>Item Category</i>	<i>Checklist Item</i>	<i>YES (the criterion is satisfied)/NO (the criterion is not satisfied)</i>
Design		
	Describe survey design	YES. The paper provides information on the target population and sample.
IRB (Institutional Review Board) approval and informed consent process		
	IRB approval	Not applicable.
	Informed consent	YES. Participants were informed on the purpose, characteristics and length of the surveys and on the fact that any collected information was treated confidentially. Both surveys included a consent statement to which each participant agreed. The paper refers to the participants' informed consent.
	Data protection	YES. Any information was treated confidentially and anonymity of the participants was preserved. This is stated in the paper.
Development and pre-testing		
	Development and testing	YES. Information on how the surveys were developed and on the initial testing phase is provided in the paper.
Recruitment process and description of the sample having access		

<i>Item Category</i>	<i>Checklist Item</i>	<i>YES (the criterion is satisfied)/NO (the criterion is not satisfied)</i>
to the questionnaire		
	Open survey versus closed survey	YES. Open surveys. An electronic link was sent to each participant for each questionnaire.
	Contact mode	YES. Methods by which the participants were contacted are clearly described in the paper.
	Advertising the survey	YES. Information on the surveys was disseminated throughout professional bodies' websites and newsletters.
Survey administration		
	Web/E-mail	YES. Information on the type of surveys is reported in the paper. The web links to the two electronic surveys were either e-mail to the participants or posted.
	Context	YES. The paper contains information on how the electronic surveys were developed (survey monkey software) and on the research group who designed them.
	Mandatory/voluntary	YES. Voluntary surveys.
	Incentives	YES. The paper clearly states that no incentives were offered .
	Time/Date	YES. The paper reports the period in which data were collected.
	Randomization of items or	NO. We did not deem necessary to randomize or

<i>Item Category</i>	<i>Checklist Item</i>	<i>YES (the criterion is satisfied)/NO (the criterion is not satisfied)</i>
	questionnaires	alternate questionnaires.
	Adaptive questioning	YES. According to the answers provided some questions could be skipped.
	Number of Items	YES. Questions were numbered progressively. The number of questions in each questionnaire is reported in the paper.
	Number of screens (pages)	YES. Each page contained a question (in a few cases a sub related question was included in the same page).
	Completeness check	YES. The survey questionnaires had a progress indicator on each page.
	Review step	YES. The participants were able to review and/or change their answers (through a Back button).
Response rates		
	Unique site visitor	NO. We did not formally put in place a mechanism to determine the number of 'unique visitors'. However we asked the participants to provide their demographic information and we used these details to check the relevant centres/hospitals in the UK that replied to the questionnaires.
	View rate (Ratio of unique survey visitors/unique site visitors)	NO.
	Participation rate (Ratio of unique visitors who agreed to participate/unique first survey)	NO. We were not in the position to determine a 'recruitment rate'. As for the way the surveys were developed and disseminated, we were not able to

<i>Item Category</i>	<i>Checklist Item</i>	<i>YES (the criterion is satisfied)/NO (the criterion is not satisfied)</i>
	page visitors)	count the number of people who agreed to participate and divide it by the visitors who visit the first page of the survey.
	Completion rate (Ratio of users who finished the survey/users who agreed to participate)	YES. Information on completion of both questionnaires is described in the paper.
Preventing multiple entries from the same individual		
	Cookies used	Not applicable . Survey Monkey software does not allow for cookies to be used.
	IP check	Not applicable. We were not in the position to prevent users with the same IP address to access the surveys twice.
	Log file analysis	NO. No specific techniques to analyse the log file for identification of multiple entries were used.
	Registration	NO. No specific techniques were used to prevent duplicate entries from the same user. However, demographic information was provided by the participants and we used these details to check for duplicate entries.
Analysis		
	Handling of incomplete questionnaires	YES. Completed and partially completed questionnaires were analysed.

1
2
3
4
5
6
7
8
9
10
11
12
13
14
15
16
17
18
19
20
21
22
23
24
25
26
27
28
29
30
31
32
33
34
35
36
37
38
39
40
41
42
43
44
45
46
47
48
49
50
51
52
53
54
55
56
57
58
59
60

<i>Item Category</i>	<i>Checklist Item</i>	<i>YES (the criterion is satisfied)/NO (the criterion is not satisfied)</i>
	Questionnaires submitted with an atypical timestamp	Not applicable. We were not in the position to measure the time people needed to fill in the questionnaires and exclude those that were completed too soon or within a pre-determined timeframe.
	Statistical correction	NO. No specific methods were used to adjust for the non-representative sample.

For peer review only



**Clinical and imaging services for TIA and minor stroke—
results of two surveys of practice across the UK**

Journal:	<i>BMJ Open</i>
Manuscript ID:	bmjopen-2013-003359.R1
Article Type:	Research
Date Submitted by the Author:	09-Jul-2013
Complete List of Authors:	Brazzelli, Miriam; University of Aberdeen, Shuler, Kirsten; University of Edinburgh, Quayyum, Zahidul; University of Aberdeen, Hadley, Donald; University of Glasgow, Muir, Keith; University of Glasgow, McNamee, Paul; University of Aberdeen DeWilde, Janet; The Higher Education Academy, Dennis, Martin; Neurosciences Trials Unit Sandercock, Peter; University of Edinburgh, Wardlaw, Joanna; University of Edinburgh, Brain Research Imaging Centre
Primary Subject Heading:	Neurology
Secondary Subject Heading:	Emergency medicine, Geriatric medicine, Health services research, Cardiovascular medicine, Radiology and imaging
Keywords:	Stroke < NEUROLOGY, Computed tomography < RADIOLOGY & IMAGING, Neuroradiology < NEUROLOGY, ACCIDENT & EMERGENCY MEDICINE

SCHOLARONE™
Manuscripts

only

1
2
3 **Title:** Clinical and imaging services for TIA and minor stroke– results of two surveys of practice
4
5 across the UK
6
7

8
9 **Authors:** Miriam Brazzelli,^{1,2} Kirsten Shuler,^{1,4} Zahid Quayyum,² Donald Hadley,^{3,4} Keith Muir,^{3,4}
10 Paul McNamee,² Janet De Wilde,^{4,5} Martin Dennis,¹ Peter Sandercock,^{1,4} Joanna M Wardlaw.^{1,4}
11
12

13
14 **Affiliations:** ¹Centre for Clinical Brain Sciences, University of Edinburgh, Edinburgh, EH4 2XU,
15 UK; ² Health Services Research Unit, University of Aberdeen, Aberdeen, AB25 2ZD, UK; ³Institute
16 of Neurological Sciences, University of Glasgow, Glasgow, UK; ⁴Scottish Imaging Network, A
17 Platform for Scientific Excellence (SINAPSE), Edinburgh, EH4 2XU, UK; ⁵The Higher Education
18 Academy, Innovation Way, York Science Park, York, YO10 5BR.
19
20
21
22
23
24

25
26
27 **Correspondence to:** Joanna M Wardlaw, Bramwell Dott Building, Western General Hospital, Crewe
28 Road, Edinburgh, EH4 2XU, UK, tel +44 131 537 2943, fax +44 131 332 5150, email
29 Joanna.wardlaw@ed.ac.uk
30
31
32

33
34
35 **Key words:** Stroke, CT, neuroradiology
36

37 **Word count:** 2405
38

39 **Article summary page 11**
40
41
42
43
44
45
46
47
48
49
50
51
52
53
54
55
56
57
58
59
60

ARTICLE SUMMARY

Article focus

- Is the current provision of stroke prevention clinical services adequate to meet the volume of work in the UK?
- Is access to brain and carotid imaging adequate to meet the demand and is imaging being used efficiently?
- Who is providing these services?

Key Messages

- Most responding centres had some form of rapid access stroke prevention clinic.
- Front line assessment was by nurses in nearly a third of clinics, but about half of patients have a TIA mimic which requires medical expertise for diagnosis.
- There was efficient use CT brain and carotid ultrasound imaging, but less good access to MR brain imaging and this was often used incorrectly or inefficiently.

Strengths and limitations

- The survey covered the whole of the UK and achieved a 45% response rate.
- Clinical and imaging services responses were highly concurrent.
- Services may be much worse in areas that did not respond.

ABSTRACT**Objectives**

Transient ischaemic attack (TIA) is a medical emergency requiring rapid access to effective, organised, stroke prevention. There are about 90,000 TIAs per year in the UK. We assessed whether stroke prevention services in the UK meet Government targets.

Design

Cross-sectional survey.

Setting

All UK clinical and imaging stroke prevention services.

Intervention

Electronic structured survey delivered over the web with automatic recording of responses into a database. Reminders to non respondents. The survey sought information on clinic frequency, staff, casemix, details of brain and carotid artery imaging, medical and surgical treatments.

Results

114 stroke clinical and 146 imaging surveys were completed (both response rates 45%). Stroke prevention services were available in most (97%) centres but only 31% operated 7 days per week. Half of clinic referrals were TIA mimics, most patients (75%) were prescribed secondary prevention prior to clinic referral, and nurses performed the medical assessment in 28% of centres. CT was the most common and fastest first-line investigation; MR, used in 51% of centres, mostly after CT, was delayed up to two weeks in 26%; 51% of centres omitted blood-sensitive (GRE/T2*) MR sequences. Carotid imaging was with ultrasound in 95% of centres and 59% performed endarterectomy within one week of deciding to operate.

Conclusions

Stroke prevention services are widely available in the UK. Delays to MRI, its use in addition to CT while omitting key sequences to diagnose haemorrhage, limit the potential benefit of MRI in stroke prevention, but inflate costs. Assessing TIA mimics requires clinical neurology expertise yet nurses run 28% of clinics. Further improvements are still required for optimal stroke prevention.

BACKGROUND

TIA and minor stroke are medical emergencies. In the UK there are 80,000 to 90,000 TIAs and minor strokes every year.[1, 2] The benefit of medical or surgical treatment to prevent recurrent stroke after TIA is greatest if given as early as possible;[3-5] the benefit falls rapidly with increasing delay.[6, 7] Patients with TIA and minor stroke need a rapid, comprehensive assessment and active management to reduce the short and long term risks of recurrent stroke. Establishing an accurate diagnosis and delivering effective stroke prevention is challenging and requires organised stroke services. NHS Improvement in England introduced tariffs to encourage the establishment of stroke prevention services which meet key performance criteria; there are supplementary tariffs for achieving optimum management of high risk TIA patients by rapid triage of patients with ABCD2 score ≥ 4 including use of MRI (additional amount payable £450 to £634 per patient in 2012, equivalent to \$670-945 US).[8, 9] We surveyed UK clinical and imaging secondary stroke prevention services to determine their performance against recent guidelines.[10]

METHODS

We devised two electronic survey questionnaires, one for clinical stroke prevention services and one for imaging services using the online survey software 'SurveyMonkey' (www.surveymonkey.com). These were informed by previous questionnaires sent to stroke services which achieved high response rates.[11-13] We used a 'closed', 'structured' response format. Both questionnaires provided information on the rationale and purpose of the study, including details of the research team, and incorporated best research practice issues such as confidentiality and informed consent.

Following pilot testing, the agreed versions of the survey questionnaires (available on request) contained detailed questions addressing the current provision of stroke prevention services (56 questions) and imaging services (47 questions) focusing on the volume of work, capacity, professionals involved, type and timing of brain and carotid imaging (within or outside normal office hours, for inpatients or outpatients), and carotid endarterectomy rates. We considered eligible participants to be all clinical leads of UK stroke services and radiology departments.

1
2
3
4
5 We offered no incentives to participate in the surveys. The responses were completely anonymous
6
7 and completion was voluntary hence approval of Ethics Committees was not required. We sent letters
8
9 of invitation explaining the objectives and providing links to access the questionnaires online in April
10
11 2011 by email or post, via multiple routes, to all UK stroke clinical leads and Radiology Directorates,
12
13 including: stroke leads of all 15 NHS Boards in Scotland through the Scottish Stroke Care Audit; the
14
15 27 stroke networks (with three to nine clinical sites within each network) through NHS Improvement
16
17 following contact with the Department of Health; to Stroke Leads in Trust Hospitals through the
18
19 Royal College of Physicians Sentinel Stroke Audit database (200 hospitals in 158 Trusts in England,
20
21 Wales and Northern Ireland); to Radiology Directorate Leads in England through NHS Improvement
22
23 and the Magnetic Resonance National Evaluation Team (MAGNET) database; all 12 Scottish Clinical
24
25 Directors of Radiology through the Diagnostic Imaging Clinical Network; and to clinical and imaging
26
27 stroke services in Wales through the Stroke Collaborative. The surveys went to 171 Acute Trusts, 129
28
29 Foundation Trusts, seven Welsh Trusts, hospitals in the 15 NHS Boards in Scotland and hospitals in
30
31 Northern Ireland. We estimated from the contact lists that there were in total 253 Stroke Services sites
32
33 and 342 Radiology Departments to contact although there is no central list of all of this information in
34
35 one place. Our questionnaire included questions about stroke patients that were assessed at the
36
37 hospital but in other clinics, eg in acute receiving units or general medicine, with the intention of
38
39 obtaining information on all stroke prevention pathways. Details of the surveys and the online links
40
41 were also disseminated through the Royal College of Physicians website and advertised through the
42
43 NHS Improvement Stroke and Radiology newsletters. Reminder messages were sent to non-
44
45 respondents in June 2011.
46
47
48

49 **Data management and analysis**

50
51
52 The results of both internet surveys were reported according to the Checklist for Reporting Results of
53
54 Internet E-Surveys (CHERRIES) statement.[14]
55
56
57
58
59
60

1
2
3 Surveys results were generated using SurveyMonkey software and entered into an Excel spreadsheet.
4
5 We expressed the clinical leads' answers as proportions, medians, or means. Not all respondents
6
7 answered all the questions, therefore the percentages reported are of the actual numbers of
8
9 respondents. To calculate the response rate, we divided the number of clinical leads to whom we
10
11 initially sent the invitation to participate by the number of participants who actually completed the
12
13 online questionnaires. However, as both surveys were also disseminated and advertised through
14
15 professional body websites and newsletters, it was not feasible to calculate the exact number of all
16
17 potential respondents contacted. The surveys were completed anonymously therefore it was not
18
19 possible to associate services with geographical location.
20
21

22 23 RESULTS

24
25 One hundred and fourteen Stroke Service surveys and 146 Imaging Service surveys were partially or
26
27 fully completed, a response rate of 45% for each.
28
29

30
31 **Stroke prevention clinics.** Among the 114 respondents, the mean catchment population was 400,000
32
33 people (median 300,000); 97% indicated that their hospital had a specialist stroke prevention clinic.
34
35 The service was run at least once a week in 99%; every weekday in 47%; and every day in 31%. Most
36
37 centres (86%, 88/102 respondents) saw between one and five new patients per clinic. In half of the
38
39 clinics (51/102 respondents), the estimated proportion of patients ultimately diagnosed as TIA/minor
40
41 stroke mimics was 41-60%; in 31% of centres it was between 60-79%. In only 16% of centres did
42
43 definite TIA/minor strokes make up the majority (61-100%) of attendees (figure 1).
44
45

46
47
48 Thirty-five percent of the TIA/minor stroke patients were seen by the stroke prevention clinic within
49
50 24 hours, 25% between 2-3 days, and about 20% within one week of their symptoms. Thirteen percent
51
52 of centres indicated that patients considered at high risk according to the ABCD2 risk prediction score
53
54 were seen within 24 hours of referral and low risk patients within seven days.
55
56
57
58
59
60

1
2
3 Most stroke prevention clinics were run by consultants (stroke physicians; neurologists; geriatricians).
4
5 However, the main medical assessment/triaging was undertaken by nurses in 28% of centres. The
6
7 final diagnosis was established either with input from, or by a consultant in 71% of centres.
8
9

10
11 In most centres, most patients seen at the specialist stroke prevention service had already been
12
13 prescribed secondary prevention drugs (e.g. aspirin; statins) for their recent suspected TIA/minor
14
15 stroke by their referring doctor (supplementary table 1).
16
17

18 19 **Brain imaging of TIA/minor stroke**

20
21 The stroke services survey showed that CT was routinely used as the main brain imaging modality in
22
23 84% (98/114 respondents) and that MRI was used in only 51% of centres for stroke prevention. This
24
25 concurred very closely with the imaging services survey which showed that CT was the main
26
27 modality in most departments (86%, 49/57 respondents). Details of access to CT and MR are provided
28
29 in supplementary Tables 2 and 3. The stroke prevention and imaging surveys both also showed that
30
31 most patients were having CT as first line test (figure 2a and figure 2b). The proportion of TIA/minor
32
33 stroke patients for whom a subsequent MRI was requested after an initial CT varied considerably
34
35 (range 0%-60%) (supplementary figure 1), the waiting time for MR after CT being one month in
36
37 about half of centres (47%). The results of brain imaging were returned to the stroke service on the
38
39 day of scanning in 66% of centres; for 22%, however, it took more than 2 days. In most centres
40
41 (76%), positive brain imaging results (e.g. haemorrhage) were provided to the stroke prevention clinic
42
43 immediately.
44
45

46
47 The routine MR sequences used for TIA/minor stroke were primarily focused on detecting ischaemia:
48
49 T1-weighted or T2-weighted, diffusion-weighted imaging (DWI), and Fluid Attenuated Inversion
50
51 Recovery (FLAIR) sequences. Fewer than half of the departments (49%) performed sequences that
52
53 are sensitive to haemorrhage (e.g. gradient echo, GRE/T2*, supplementary figure 2). Some
54
55 departments (18%) used only DWI and T2-weighted sequences routinely, thus limiting the chance of
56
57 detecting either cerebral haemorrhage or non-vascular brain lesions that mimic stroke/TIA.
58
59
60

Carotid artery imaging and endarterectomy

Carotid artery imaging most frequently took place the day of the clinic (47%, 47/100 respondents). Doppler ultrasound (DUS) was the first line carotid/vertebral imaging in most centres (95%). Most centres (80%) provided the results of carotid artery imaging on the same day, and most centres (86%; 85/99 respondents) provided important positive results immediately. A repeat DUS (19%), or CTA (60%) or contrast MRA (41% of centres) were used as confirmatory tests prior to referral for endarterectomy.

The time between the decision to perform a carotid endarterectomy and the actual surgical procedure was less than one week in 59% of centres and between one and three weeks in approximately 37% of centres (supplementary figure 3). No stroke service performed endarterectomy more than six months after the decision to operate.

Workload volume and capacity

During 2010, on average 4,905 CT brain scans were performed per radiology department (range 20-48,346; median 2,500), 18% were conducted out-of-hours but with considerable variation. On average 686 CT brain scans were for patients with suspected TIA/minor stroke (range 0-5,000 scans; median 200 scans), i.e. about 14% of the total workload. On average, 9% of these CT scans were performed out-of-hours (range 0-60% scans; median 2% scans).

During 2010, on average 2,888 brain MR images were performed per radiology department (range 20-24,391 scans; median 1,530 scans), only 3% of MR scans were conducted out-of-hours (most performed no MR brain imaging out-of-hours). On average, 258 MR brain scans were conducted on patients suspected of TIA/minor stroke (range 0-1,200 scans; median 100 scans), ie about 9% of the total workload.

Forty-three percent of the stroke prevention centres indicated that they had spare capacity to see further patients. Responses varied as to what extra facilities were required to expand the current stroke service (figure 3), 'more consultants' being the most frequent, but 'more carotid imaging' was required in 53%. When 'more brain imaging' was chosen, all respondents opted for more MRI (38/38 respondents) rather than CT (14/38).

DISCUSSION

These simultaneous surveys of stroke prevention clinics and imaging services indicate that the necessary components of stroke prevention services are widely available in the UK, but their structure and organisation vary considerably and an important proportion of practice remains suboptimal (Table 1). In most centres (78%), specialist stroke prevention services operate every weekday with on average five new patients attending each clinic yet only 60% of patients were seen within one week of their event. Additionally, over half the case-load are patients with a final diagnosis of a non TIA/minor stroke 'mimic'. Specialist medical knowledge is required for accurate diagnosis and appropriate medical management of this very heterogeneous case-mix, yet in a quarter of clinics, the main assessment is by nurses.

Table 1. Key findings.

- Nurses provide the primary assessment and diagnosis in nearly a third of clinics;
- 50% of patients attending these clinics have TIA/minor stroke mimic;
- Most patients (75%) have already started secondary prevention treatment before attending the clinic;
- CT for TIA and minor stroke is widely available (94%), is the first line test in the vast majority of centres, and is routinely used in 82%;
- MR is available for TIA and minor stroke patients in 88% of centres but in about half of those it is after an initial CT scan
- There are long delays to MR imaging;
- The key MR sequence needed to diagnose haemorrhage is omitted in more than half of centres, reducing the value of MR;
- Ultrasound is the primary carotid imaging test in 95% of centres;
- There is limited capacity to undertake more imaging although about 40% of stroke services

1
2
3 indicated that they had capacity to see more patients; however the main barrier to seeing more
4 patients was the limited availability of MR.
5
6
7

8 The consistency between the clinical services' and imaging departments' responses to the question
9 about first line imaging method is striking (figure 2a and figure 2b). Both CT and MR are widely
10 available but access to CT is more rapid and more complete than for MR, particularly outside normal
11 office hours and for outpatients (Supplementary tables 2 and 3). MR was commonly performed in
12 addition to and after CT – possibly somewhat inappropriately since the diagnostic yield from MR for
13 ischaemic lesions on diffusion imaging declines rapidly with time after the event.[15] The survey did
14 not include a question on why MR was performed in addition to CT (or vice versa) therefore we are
15 not able to say why this practice was so common. Furthermore, in more than half the centres, the key
16 MR sequence required to identify haemorrhage accurately (i.e. GRE/T2* or equivalent) was omitted
17 (Supplementary figure 2),[16] increasing the risk that haemorrhages would be misdiagnosed as
18 ischaemic events[17] (one of the two main reasons for brain imaging in TIA/minor stroke) leading to
19 these patients receiving potentially inappropriate antithrombotic or anticoagulant treatment or even
20 offered inappropriate carotid endarterectomy. Some centres that only use DWI and T2 are also likely
21 to miss some stroke/TIA mimics that could otherwise be diagnosed with MR (the other of the two
22 main reasons for brain imaging in TIA/minor stroke). Most patients had already been started on
23 secondary prevention by their GPs before they reached the clinic (supplementary table 1), further
24 questioning the value of MR performed in addition to CT, especially as the MR was frequently too
25 late to be of great diagnostic utility.
26
27
28
29
30
31
32
33
34
35
36
37
38
39
40
41
42
43
44
45

46 The surveys confirmed that Doppler ultrasound is the main carotid imaging for TIA (95%) not MRA
47 or CTA, perhaps reflecting that the potential for a 'combined brain and carotid' examination (e.g.
48 CT+CTA or MR+MRA) is not practical in most centres. In 59% of stroke services, endarterectomy
49 was performed within one week of the decision to operate. The decreasing delay to surgery is
50 encouraging and in line with guidelines and recent audit reports,[18] but the persistence of delays of
51 up to a month in nearly 40% of patients remains a concern.
52
53
54
55
56
57
58
59
60

1
2
3
4
5 The surveys were targeted to clinical leads of stroke prevention services and radiology departments.
6
7 Response rate for both surveys was 45% which we considered satisfactory for such a survey in view
8
9 of the large number of departments surveyed, the busy workload of service leads and their many
10
11 administrative tasks. The response rates in three previous surveys about stroke services were higher
12
13 but these took place amongst much smaller catchment groups where many of the respondents knew
14
15 the surveyors personally and were highly motivated about the topic of the survey.[11-13] The present
16
17 survey went to a substantially larger number of sites across the whole of the United Kingdom and
18
19 inevitably could not achieve the same personal touch. The strengths include our use of several
20
21 mechanisms to prevent sampling bias and increase response rate. We used multiple routes to access
22
23 all stroke and imaging services clinical leads in the UK and web-based questionnaires for ease of
24
25 completion. We sent reminders to non-respondents. We reported our findings according to standard
26
27 methodology (i.e. CHERRIES checklist). We provided web and paper surveys to assist respondents.
28
29 We based these surveys on several previous surveys of stroke services that achieved high response
30
31 rates.[11-13]
32

33
34
35 There were also limitations. The survey was anonymous and voluntary so we are not able to chart
36
37 service distribution across the UK. We cannot exclude the possibility that some centres submitted two
38
39 surveys. To protect the anonymity of the participants we also did not request full demographic details,
40
41 so were unable to compare respondents with non-respondents. Our findings may, therefore, not apply
42
43 to all stroke prevention services. Although both internet surveys provided invaluable data to picture
44
45 current clinical practice, some data were not routinely collected in all centres and respondents were
46
47 only able to estimate some answers. Not all respondents answered all questions. Even though the 45%
48
49 response rate for both surveys can be considered satisfactory, we cannot be sure to have captured the
50
51 full range of performance with respect to current stroke service provision.
52

53
54
55 There are no other current nation-wide data on clinical services or imaging for stroke prevention in
56
57 the UK or from other countries. MR usage for stroke is rising rapidly in many countries. For example,
58
59
60

1
2
3 MR use rose by 235% in 10 states in the USA from 1999 to 2008,[19] making diagnostic imaging the
4
5 single fastest growing component of hospital costs rising by 213% from 1999 to 2008 in the USA.[19]
6
7 MR was used in addition to CT in about half of the patients, a similar pattern to that found in our
8
9 survey. The use of several imaging tests will increase delays and further impede rapid access to
10
11 imaging. The increase in use is occurring despite a lack of evidence in a recent systematic review that
12
13 MR significantly changed management, or any randomised trials, case-control or cohort studies of
14
15 imaging strategies to justify its increased use.[20]
16
17
18

19 We suggest that use of expensive resources in TIA/minor stroke, such as brain imaging, could be
20
21 improved by ensuring that patients only have either CT or MR but not both. Where MR is used, then
22
23 it should be used as fast as possible (beyond a few days after the TIA/minor stroke is unlikely to
24
25 detect recent ischaemia and would be a waste of time for that purpose) and diagnostic sequences
26
27 should include those appropriate to avoid misdiagnosing haemorrhage or TIA/minor stroke mimics;
28
29 this is particularly critical if MR is used in patients whose presentation is delayed beyond seven days
30
31 when CT will not differentiate haemorrhage. Further consideration should be given to whether
32
33 widespread use of nurse triage is the most effective way of dealing with complex TIA/minor stroke
34
35 mimics which generally require some considerable medical experience to differentiate from true
36
37 TIA/minor stroke.
38
39
40
41
42
43
44
45
46
47
48
49
50
51
52
53
54
55
56
57
58
59
60

AUTHOR CONTRIBUTIONS

JM Wardlaw, M Dennis, P Sandercock conceived the idea for the study and secured funding; M Brazzelli, Z Quayum and JM Wardlaw drafted the survey; D Hadley, K Muir, P McNamee, J DeWilde, M Dennis and P Sandercock tested and edited the survey; M Brazzelli and K Shuler set up the final version of the survey into the survey software; M Dennis, JM Wardlaw, M Brazzelli and J De Wilde disseminated the survey as widely as possible; K Shuler and M Brazzelli downloaded the responses, collated and analysed the results; all authors interpreted the results; M Brazzelli and JM Wardlaw drafted the paper; all authors contributed critical comments and edited the manuscript; all authors gave their final approval for submission of the manuscript; JM Wardlaw was the principal investigator and takes full responsibility for the integrity and accuracy of the work. Thus all authors fulfil all three ICMJE criteria for authorship: 1) substantial contributions to conception and design, acquisition of data, or analysis and interpretation of data; 2) drafting the article or revising it critically for important intellectual content; 3) final approval of the version to be published.

ACKNOWLEDGEMENTS

We thank the following for their assistance in circulating the questionnaires: Dr Damian Jenkinson, Stroke Advisor, Dept of Health; Ian Golton, Barbara Zutshi, NHS Improvement Stroke Improvement Programme; Prof Tony Rudd and Ms Alex Hoffman, Royal College of Physicians London Sentinel Stroke Audit Office; the clinical leads of all 27 Stroke networks clinical leads in England; the Scottish Stroke Care Clinical Leads; NHS Improvement Database for Radiology Departments in England (Gail Powell); the MagNET Database; Prof Ian Robertson, Mr James Cannon, the Diagnostic Imaging Clinical Network, Scotland; the Scottish Radiological Society; All Scottish Regional Imaging Services Leads; Michelle Price, Stroke Collaborative, Wales; all imaging and clinical leads for stroke services in Wales.

COMPETING INTERESTS

The authors acknowledge funding for the study from the UK National Institutes of Health Research Health Technology Assessment Programme (salary for MB, ZQ). JMW and KM were supported by the SINAPSE Collaboration. All authors had full unrestricted access to all the study data. The views are those of the authors and not those of the funding agency. There are no other competing interests. JMW takes responsibility for the integrity of the data and the accuracy of the data analysis.

FUNDING

The work was funded by the UK National Institutes of Health Research Health Technology Assessment Programme (09/22/169). The SINAPSE Collaboration is funded by the Scottish Funding Council. The Brain Research Imaging Centre is supported by NHS Lothian Research and Development Office.

DATA SHARING

Extra data can be accessed via the Dryad data repository at <http://datadryad.org/> with the doi:10.5061/dryad.3nc25.

References

- 1 Coull AJ, Lovett JK, Rothwell PM, et al. Population based study of early risk of stroke after transient ischaemic attack or minor stroke: implications for public education and organisation of services. *BMJ* 2004;**328**:326.
- 2 Giles MF, Rothwell PM. Substantial underestimation of the need for outpatient services for TIA and minor stroke. *Age Ageing* 2007;**36**:676-80.
- 3 Wasserman J, Perry J, Dowlatshahi D, et al. Stratified, urgent care for transient ischemic attack results in low stroke rates. *Stroke* 2010;**41**:2601-5.
- 4 Rothwell PM, Giles MF, Chandratheva A, et al. Effect of urgent treatment of transient ischaemic attack and minor stroke on early recurrent stroke (EXPRESS study): a prospective population-based sequential comparison. *Lancet* 2007;**370**:1432-42.
- 5 Lavalley PC, Meseguer E, Abboud H, et al. A transient ischaemic attack clinic with round-the-clock access (SOS-TIA): feasibility and effects. *Lancet Neurol* 2007;**6**:953-60.
- 6 Bejot Y, Zeller M, Lorgis L, et al. Secondary prevention in patients with vascular disease. A population based study on the underuse of recommended medications. *J Neurol Neurosurg Psychiatry* 2013;**84**:348-53.
- 7 Sandercock PAG. Should I start all my ischaemic stroke and TIA patients on a statin, an ACE inhibitor, a diuretic, and aspirin today? *J Neurol Neurosurg Psychiatry* 2003;**74**:1461-4.
- 8 Department of Health Knowledge & Intelligence Branch. Technical Guidance for the 2011/12 Operating Framework. London: Crown 2011:1-261.

- 1
2
3 9 Department of Health Payment by Results team. Payment by Results Guidance for 2011-12.
4
5 London: Crown 2011:1-136.
6
7
8
9 10 National Institute for Health and Clinical Excellence (NICE). Stroke. The diagnosis and acute
10
11 management of stroke and transient ischaemic attacks. London: National Institute for Health and
12
13 Clinical Excellence 2008:1-37.
14
15
16
17 11 Kane I, Whiteley WN, Sandercock PA, et al. Availability of CT and MR for assessing patients
18
19 with acute stroke. *Cerebrovasc Dis* 2008;**25**:375-7.
20
21
22
23 12 Wardlaw JM, Keir SL, Seymour J, et al. What is the best imaging strategy for acute stroke?
24
25 *Health Technol Assess* 2004;**8**:1-180.
26
27
28
29 13 Lindley RI, Amayo EO, Marshall J, et al. Hospital services for patients with acute stroke in the
30
31 United Kingdom: the Stroke Association survey of consultant opinion. *Age Ageing* 1995;**24**:525-
32
33 32.
34
35
36
37 14 Eysenbach G. Improving the quality of web surveys: the Checklist for Reporting Results of
38
39 Internet E-Surveys (CHERRIES). *J Med Internet Res* 2004;**6**:e34.
40
41
42
43 15 Moreau F, Modi J, Almekhlafi M, et al. Early magnetic resonance imaging in transient ischemic
44
45 attack and minor stroke: do it or lose it. *Stroke* 2013;**44**:671-4.
46
47
48
49 16 Dimigen M, Keir S, Dennis M, et al. Long-term visibility of primary intracerebral haemorrhage
50
51 on MRI. *J Stroke Cerebrovasc Dis* 2004;**13**:104-8.
52
53
54
55
56
57
58
59
60

- 1
2
3 17 Wardlaw JM, Keir SL, Dennis MS. The impact of delays in computed tomography of the brain on
4 the accuracy of diagnosis and subsequent management in patients with minor stroke. *J Neurol*
5 *Neurosurg Psychiatry* 2003;**74**:77-81.
6
7
8
9
10
11 18 Intercollegiate Stroke Working Party. National clinical guideline for stroke. London: Royal
12 College of Physicians 2012:1-208.
13
14
15
16
17 19 Burke JF, Kerber KA, Iwashyna TJ, et al. Wide variation and rising utilization of stroke magnetic
18 resonance imaging: data from 11 states. *Ann Neurol* 2012;**71**:179-85.
19
20
21
22
23 20 Burke JF, Gelb DJ, Quint DJ, et al. The impact of MRI on stroke management and outcomes: a
24 systematic review. *J Eval Clin Pract* 2012;**doi: 10.1111/jep.12011**.
25
26
27
28
29
30
31
32
33
34
35
36
37
38
39
40
41
42
43
44
45
46
47
48
49
50
51
52
53
54
55
56
57
58
59
60

FIGURE LEGENDS

FIGURE 1. Proportion of patients attending the stroke prevention clinic who were ultimately diagnosed as having TIA or minor stroke. 102/114 centres answered this question.

FIGURE 2. Proportion of patients suspected of TIA/minor stroke who had CT or MRI as first line brain imaging investigation.

A) Imaging services survey (55/146 responders).

B) Stroke prevention services survey (101/114 responders).

FIGURE 3. Resources needed to expand capacity in fully saturated stroke prevention services. 77/114 responded. Participants were asked to choose all suitable answers.

1
2
3
4
5
6
7
8
9
10
11
12
13
14
15
16
17
18
19
20
21
22
23
24
25
26
27
28
29
30
31
32
33
34
35
36
37
38
39
40
41
42
43
44
45
46
47
48
49
50
51
52
53
54
55
56
57
58
59
60

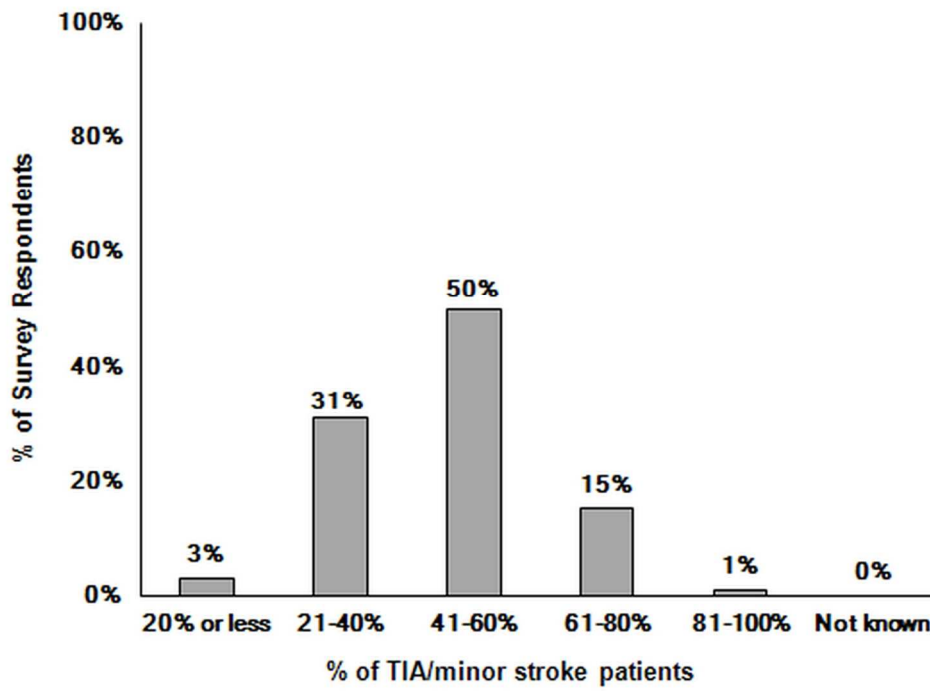


FIGURE 1. Proportion of patients attending the stroke prevention clinic who were ultimately diagnosed as having TIA or minor stroke. 102/114 centres answered this question.
124x90mm (300 x 300 DPI)

Review only

1
2
3
4
5
6
7 **Title:** Clinical and imaging services for TIA and minor stroke– results of two surveys of practice
8 across the UK
9

10
11 **Authors:** Miriam Brazzelli,^{1,2} Kirsten Shuler,^{1,4} Zahid Quayyum,² Donald Hadley,^{3,4} Keith Muir,^{3,4}
12 Paul McNamee,² Janet De Wilde,^{4,5} Martin Dennis,¹ Peter Sandercock,^{1,4} Joanna M Wardlaw.^{1,4}
13
14

15
16
17 **Affiliations:** ¹Centre for Clinical Brain Sciences, University of Edinburgh, Edinburgh, EH4 2XU,
18 UK; ² Health Services Research Unit, University of Aberdeen, Aberdeen, AB25 2ZD, UK; ³Institute
19 of Neurological Sciences, University of Glasgow, Glasgow, UK; ⁴Scottish Imaging Network, A
20 Platform for Scientific Excellence (SINAPSE), Edinburgh, EH4 2XU, UK; ⁵The Higher Education
21 Academy, Innovation Way, York Science Park, York, YO10 5BR.
22
23
24
25
26

27
28 **Correspondence to:** Joanna M Wardlaw, Bramwell Dott Building, Western General Hospital, Crewe
29 Road, Edinburgh, EH4 2XU, UK, tel +44 131 537 2943, fax +44 131 332 5150, email
30 Joanna.wardlaw@ed.ac.uk
31
32

33
34
35 **Key words:** Stroke, CT, neuroradiology

36 **Word count:** 2405

37
38 **Article summary page 11**
39
40
41
42
43
44
45
46
47
48
49
50
51
52
53
54
55
56
57
58
59
60

ABSTRACT**Objectives**

Transient ischaemic attack (TIA) is a medical emergency requiring rapid access to effective, organised, stroke prevention. There are about 90,000 TIAs per year in the UK. We assessed whether stroke prevention services in the UK meet Government targets.

Design

Cross-sectional survey.

Setting

All UK clinical and imaging stroke prevention services.

Intervention

Electronic structured survey delivered over the web with automatic recording of responses into a database. Reminders to non respondents. The survey sought information on clinic frequency, staff, casemix, details of brain and carotid artery imaging, medical and surgical treatments.

Results

114 stroke clinical and 146 imaging surveys were completed (both response rates 45%). Stroke prevention services were available in most (97%) centres but only 31% operated 7 days per week. Half of clinic referrals were TIA mimics, most patients (75%) were prescribed secondary prevention prior to clinic referral, and nurses performed the medical assessment in 28% of centres. CT was the most common and fastest first-line investigation; MR, used in 51% of centres, mostly after CT, was delayed up to two weeks in 26%; 51% of centres omitted blood-sensitive (GRE/T2*) MR sequences. Carotid imaging was with ultrasound in 95% of centres and 59% performed endarterectomy within one week of deciding to operate.

Conclusions

Stroke prevention services are widely available in the UK. Delays to MRI, its use in addition to CT while omitting key sequences to diagnose haemorrhage, limit the potential benefit of MRI in stroke prevention, but inflate costs. Assessing TIA mimics requires clinical neurology expertise yet nurses run 28% of clinics. Further improvements are still required for optimal stroke prevention.

BACKGROUND

TIA and minor stroke are medical emergencies. In the UK there are 80,000 to 90,000 TIAs and minor strokes every year.[1, 2] The benefit of medical or surgical treatment to prevent recurrent stroke after TIA is greatest if given as early as possible:[3-5] the benefit falls rapidly with increasing delay.[6, 7] Patients with TIA and minor stroke need a rapid, comprehensive assessment and active management to reduce the short and long term risks of recurrent stroke. Establishing an accurate diagnosis and delivering effective stroke prevention is challenging and requires organised stroke services. NHS Improvement in England introduced tariffs to encourage the establishment of stroke prevention services which meet key performance criteria; there are supplementary tariffs for achieving optimum management of high risk TIA patients by rapid triage of patients with ABCD2 score ≥ 4 , including use of MRI (additional amount payable £450 to £634 per patient in 2012, equivalent to \$670-945 US).[8, 9] We surveyed UK clinical and imaging secondary stroke prevention services to determine their performance against recent guidelines.[10]

METHODS

We devised two electronic survey questionnaires, one for clinical stroke prevention services and one for imaging services using the online survey software 'SurveyMonkey' (www.surveymonkey.com). These were informed by previous questionnaires sent to stroke services which achieved high response rates.[11-13] We used a 'closed', 'structured' response format. Both questionnaires provided information on the rationale and purpose of the study, including details of the research team, and incorporated best research practice issues such as confidentiality and informed consent.

Following pilot testing, the agreed versions of the survey questionnaires (available on request) contained detailed questions addressing the current provision of stroke prevention services (56 questions) and imaging services (47 questions) focusing on the volume of work, capacity, professionals involved, type and timing of brain and carotid imaging (within or outside normal office hours, for inpatients or outpatients), and carotid endarterectomy rates. We considered eligible participants to be all clinical leads of UK stroke services and radiology departments.

Field Code Changed

Field Code Changed

Field Code Changed

Formatted: Font: (Default) Times New Roman

Formatted: Font: (Default) Times New Roman

Field Code Changed

Field Code Changed

Field Code Changed

1
2
3
4
5
6
7
8 We offered no incentives to participate in the surveys. The responses were completely anonymous
9 and completion was voluntary hence approval of Ethics Committees was not required. We sent letters
10 of invitation explaining the objectives and providing links to access the questionnaires online in April
11 2011 by email or post, via multiple routes, to all UK stroke clinical leads and Radiology Directorates,
12 including: stroke leads of all 15 NHS Boards in Scotland through the Scottish Stroke Care Audit; the
13 27 stroke networks (with three to nine clinical sites within each network) through NHS Improvement
14 following contact with the Department of Health; to Stroke Leads in Trust Hospitals through the
15 Royal College of Physicians Sentinel Stroke Audit database ([200 hospitals in 158 Trusts in England,](#)
16 [Wales and Northern Ireland](#)); to Radiology Directorate Leads in England through NHS Improvement
17 and the Magnetic ~~resonance~~-Resonance National Evaluation Team (MagNET) database; all 12
18 Scottish Clinical Directors of Radiology through the Diagnostic Imaging Clinical Network; and to
19 clinical and imaging stroke services in Wales through the Stroke Collaborative. The surveys went to
20 171 Acute Trusts, 129 Foundation Trusts, ~~and~~ seven Welsh Trusts, ~~and~~ hospitals in the 15 NHS
21 Boards in Scotland [and hospitals in Northern Ireland. We estimated from the contact lists that there](#)
22 [were in total 253 Stroke Services sites and 342 Radiology Departments to contact although there is no](#)
23 [central list of all of this information in one place. Our questionnaire included questions about stroke](#)
24 [patients that were assessed at the hospital but in other clinics, eg in acute receiving units or general](#)
25 [medicine, with the intention of obtaining information on all stroke prevention pathways.](#) Details of
26 the surveys and the online links were also disseminated through the Royal College of Physicians
27 website and advertised through the NHS Improvement Stroke and Radiology newsletters. Reminder
28 messages were sent to non-respondents in June 2011.

47 Data management and analysis

48 The results of both internet surveys were reported according to the Checklist for Reporting Results of
49 Internet E-Surveys (CHERRIES) statement,^[14]

Formatted: Font: 11 pt

Formatted: Font: 11 pt

Field Code Changed

1
2
3
4
5
6
7 Surveys results were generated using SurveyMonkey software and entered into an Excel spreadsheet.
8 We expressed the clinical leads' answers as proportions, medians, or means. Not all respondents
9 answered all the questions, therefore the percentages reported are of the actual numbers of
10 respondents. To calculate the response rate, we divided the number of clinical leads to whom we
11 initially sent the invitation to participate by the number of participants who actually completed the
12 online questionnaires. However, as both surveys were also disseminated and advertised through
13 professional body websites and newsletters, it was not feasible to calculate the exact number of all
14 potential respondents contacted. The surveys were completed anonymously therefore it was not
15 possible to associate services with geographical location.
16
17
18
19
20
21

22 23 24 RESULTS

25
26 One hundred and fourteen Stroke Service surveys and 146 Imaging Service surveys were partially or
27 fully completed, a response rate of 45% for each.
28
29

30
31 **Stroke prevention clinics.** Among the 114 respondents, the mean catchment population was 400,000
32 people (median 300,000); 97% indicated that their hospital had a specialist stroke prevention clinic.
33 The service was run at least once a week in 99%; every weekday in 47%; and every day in 31%. Most
34 centres (86%, 88/102 respondents) saw between one and five new patients per clinic. In half of the
35 clinics (51/102 respondents), the estimated proportion of patients ultimately diagnosed as TIA/minor
36 stroke mimics was 41-60%; in 31% of centres it was between 60-79%. In only 16% of centres did
37 definite TIA/minor strokes make up the majority (61-100%) of attendees (figure 1).
38
39
40
41
42
43
44

45
46 Thirty-five percent of the TIA/minor stroke patients were seen by the stroke prevention clinic within
47 24 hours, 25% between 2-3 days, and about 20% within one week of their symptoms. Thirteen percent
48 of centres indicated that patients considered at high risk according to the ABCD2 risk prediction score
49 were seen within 24 hours of referral and low risk patients within seven days.
50
51
52
53
54
55
56
57
58
59
60

1
2
3
4
5
6
7 Most stroke prevention clinics were run by consultants (stroke physicians; neurologists; geriatricians).
8 However, the main medical assessment/triaging was undertaken by nurses in 28% of centres. The
9 final diagnosis was established either with input from, or by a consultant in 71% of centres.
10
11

12
13
14 In most centres, most patients seen at the specialist stroke prevention service had already been
15 prescribed secondary prevention drugs (e.g. aspirin; statins) for their recent suspected TIA/minor
16 stroke by their referring doctor (supplementary table 1).
17
18
19

20 **Brain imaging of TIA/minor stroke**

21
22 The stroke services survey showed that CT was routinely used as the main brain imaging modality in
23 84% (98/114 respondents) and that MRI was used in only 51% of centres for stroke prevention. This
24 concurred very closely with the imaging services survey which showed that CT was the main
25 modality in most departments (86%, 49/57 respondents). Details of access to CT and MR are provided
26 in supplementary Tables 2 and 3. The stroke prevention and imaging surveys both also showed that
27 most patients were having CT as first line test (figure 2a and figure 2b). The proportion of TIA/minor
28 stroke patients for whom a subsequent MRI was requested after an initial CT varied considerably
29 (range 0%-60%) (supplementary figure 1), the waiting time for MR after CT being one month in
30 about half of centres (47%). The results of brain imaging were returned to the stroke service on the
31 day of scanning in 66% of centres; for 22%, however, it took more than 2 days. In most centres
32 (76%), positive brain imaging results (e.g. haemorrhage) were provided to the stroke prevention clinic
33 immediately.
34
35
36
37
38
39
40
41
42
43
44

45 The routine MR sequences used for TIA/minor stroke were primarily focused on detecting ischaemia:
46 T1-weighted or T2-weighted, diffusion-weighted imaging (DWI), and Fluid Attenuated Inversion
47 Recovery (FLAIR) sequences. Fewer than half of the departments (49%) performed sequences that
48 are sensitive to haemorrhage (e.g. gradient echo, GRE/T2*, supplementary figure 2). Some
49 departments (18%) used only DWI and T2-weighted sequences routinely, thus limiting the chance of
50 detecting either cerebral haemorrhage or non-vascular brain lesions that mimic stroke/TIA.
51
52
53
54
55
56
57
58
59
60

Carotid artery imaging and endarterectomy

Carotid artery imaging most frequently took place the day of the clinic (47%, 47/100 respondents). Doppler ultrasound (DUS) was the first line carotid/vertebral imaging in most centres (95%). Most centres (80%) provided the results of carotid artery imaging on the same day, and most centres (86%; 85/99 respondents) provided important positive results immediately. A repeat DUS (19%), or CTA (60%) or contrast MRA (41% of centres) were used as confirmatory tests prior to referral for endarterectomy.

The time between the decision to perform a carotid endarterectomy and the actual surgical procedure was less than one week in 59% of centres and between one and three weeks in approximately 37% of centres (supplementary figure 3). No stroke service performed endarterectomy more than six months after the decision to operate.

Workload volume and capacity

During 2010, on average 4,905 CT brain scans were performed per radiology department (range 20-48,346; median 2,500), 18% were conducted out-of-hours but with considerable variation. On average 686 CT brain scans were for patients with suspected TIA/minor stroke (range 0-5,000 scans; median 200 scans), i.e. about 14% of the total workload. On average, 9% of these CT scans were performed out-of-hours (range 0-60% scans; median 2% scans).

During 2010, on average 2,888 brain MR images were performed per radiology department (range 20-24,391 scans; median 1,530 scans), only 3% of MR scans were conducted out-of-hours (most performed no MR brain imaging out-of-hours). On average, 258 MR brain scans were conducted on patients suspected of TIA/minor stroke (range 0-1,200 scans; median 100 scans), ie about 9% of the total workload.

Forty-three percent of the stroke prevention centres indicated that they had spare capacity to see further patients. Responses varied as to what extra facilities were required to expand the current stroke service (figure 3), 'more consultants' being the most frequent, but 'more carotid imaging' was required in 53%. When 'more brain imaging' was chosen, all respondents opted for more MRI (38/38 respondents) rather than CT (14/38).

DISCUSSION

These simultaneous surveys of stroke prevention clinics and imaging services indicate that the necessary components of stroke prevention services are widely available in the UK, but their structure and organisation vary considerably and an important proportion of practice remains suboptimal (Table 1). In most centres (78%), specialist stroke prevention services operate every weekday with on average five new patients attending each clinic yet only 60% of patients were seen within one week of their event. Additionally, over half the case-load are patients with a final diagnosis of a non TIA/minor stroke 'mimic'. Specialist medical knowledge is required for accurate diagnosis and appropriate medical management of this very heterogeneous case-mix, yet in a quarter of clinics, the main assessment is by nurses.

Table 1. Key findings.

- Nurses provide the primary assessment and diagnosis in nearly a third of clinics;
- 50% of patients attending these clinics have TIA/minor stroke mimic;
- Most patients (75%) have already started secondary prevention treatment before attending the clinic;
- CT for TIA and minor stroke is widely available (94%), is the first line test in the vast majority of centres, and is routinely used in 82%;
- MR is available for TIA and minor stroke patients in 88% of centres but in about half of those it is after an initial CT scan
- There are long delays to MR imaging;
- The key MR sequence needed to diagnose haemorrhage is omitted in more than half of centres, reducing the value of MR;
- Ultrasound is the primary carotid imaging test in 95% of centres;
- There is limited capacity to undertake more imaging although about 40% of stroke services

1
2
3
4
5
6
7 indicated that they had capacity to see more patients; however the main barrier to seeing more
8 patients was the limited availability of MR.
9

10
11 The consistency between the clinical services' and imaging departments' responses to the question
12 about first line imaging method is striking (figure 2a and figure 2b). Both CT and MR are widely
13 available but access to CT is more rapid and more complete than for MR, particularly outside normal
14 office hours and for outpatients (Supplementary tables 2 and 3). MR was commonly performed in
15 addition to and after CT – possibly somewhat inappropriately since the diagnostic yield from MR for
16 ischaemic lesions on diffusion imaging declines rapidly with time after the event.[15] The survey did
17 not include a question on why MR was performed in addition to CT (or vice versa) therefore we are
18 not able to say why this practice was so common. Furthermore, in more than half the centres, the key
19 MR sequence required to identify haemorrhage accurately (i.e. GRE/T2* or equivalent) was omitted
20 (Supplementary figure 2),[16] increasing the risk that haemorrhages would be misdiagnosed as
21 ischaemic events[17] (one of the two main reasons for brain imaging in TIA/minor stroke) leading to
22 these patients receiving potentially inappropriate antithrombotic or anticoagulant treatment or even
23 offered inappropriate carotid endarterectomy. Some centres that only use DWI and T2 are also likely
24 to miss some stroke/TIA mimics that could otherwise be diagnosed with MR (the other of the two
25 main reasons for brain imaging in TIA/minor stroke). Most patients had already been started on
26 secondary prevention by their GPs before they reached the clinic (supplementary table 1), further
27 questioning the value of MR performed in addition to CT, especially as the MR was frequently too
28 late to be of great diagnostic utility.
29
30
31
32
33
34
35
36
37
38
39
40
41
42
43
44

45 The surveys confirmed that Doppler ultrasound is the main carotid imaging for TIA (95%) not MRA
46 or CTA, perhaps reflecting that the potential for a 'combined brain and carotid' examination (e.g.
47 CT+CTA or MR+MRA) is not practical in most centres. In 59% of stroke services, endarterectomy
48 was performed within one week of the decision to operate. The decreasing delay to surgery is
49 encouraging and in line with guidelines and recent audit reports,[18] but the persistence of delays of
50 up to a month in nearly 40% of patients remains a concern.
51
52
53
54
55
56
57
58
59
60

Field Code Changed

Field Code Changed

Field Code Changed

Field Code Changed

1
2
3
4
5
6
7
8 The surveys were targeted to clinical leads of stroke prevention services and radiology departments.

9
10 Response rate for both surveys was 45% which we considered satisfactory for such a survey [in view](#)
11 [of the large number of departments surveyed, the busy workload of service leads and their many](#)
12 [administrative tasks. The response rates in three previous surveys about stroke services were higher](#)
13 [but these took place amongst much smaller catchment groups where many of the respondents knew](#)
14 [the surveyors personally and were highly motivated about the topic of the survey.\[11-13\]](#) The present
15 [survey went to a substantially larger number of sites across the whole of the United Kingdom and](#)
16 [inevitably could not achieve the same personal touch.](#) The strengths include our use of several
17 mechanisms to prevent sampling bias and increase response rate. We used multiple routes to access
18 all stroke and imaging services clinical leads in the UK and web-based questionnaires for ease of
19 completion. We sent reminders to non-respondents. We reported our findings according to standard
20 methodology (i.e. CHERRIES checklist). We provided web and paper surveys to assist respondents.
21 We based these surveys on several previous surveys of stroke services that achieved high response
22 rates.[11-13]

Field Code Changed

23
24
25
26
27
28
29
30
31
32
33
34
35 There were also limitations. The survey was anonymous and voluntary so we are not able to chart
36 service distribution across the UK. We cannot exclude the possibility that some centres submitted two
37 surveys. To protect the anonymity of the participants we also did not request full demographic details,
38 so were unable to compare respondents with non-respondents. Our findings may, therefore, not apply
39 to all stroke prevention services. Although both internet surveys provided invaluable data to picture
40 current clinical practice, some data were not routinely collected in all centres and respondents were
41 only able to estimate some answers. Not all respondents answered all questions. Even though the 45%
42 response rate for both surveys can be considered satisfactory, we cannot be sure to have captured the
43 full range of performance with respect to current stroke service provision.
44
45
46
47
48
49
50

51
52
53 There are no other current nation-wide data on clinical services or imaging for stroke prevention in
54 the UK or from other countries. MR usage for stroke is rising rapidly in many countries. For example,
55
56

1
2
3
4
5
6
7 MR use rose by 235% in 10 states in the USA from 1999 to 2008,[19] making diagnostic imaging the
8 single fastest growing component of hospital costs rising by 213% from 1999 to 2008 in the USA.[19]
9
10 MR was used in addition to CT in about half of the patients, a similar pattern to that found in our
11 survey. The use of several imaging tests will increase delays and further impede rapid access to
12 imaging. The increase in use is occurring despite a lack of evidence in a recent systematic review that
13 MR significantly changed management, or any randomised trials, case-control or cohort studies of
14 imaging strategies to justify its increased use.[20]
15
16
17
18
19
20

Field Code Changed

Field Code Changed

Field Code Changed

21 We suggest that use of expensive resources in TIA/minor stroke, such as brain imaging, could be
22 improved by ensuring that patients only have either CT or MR but not both. Where MR is used, then
23 it should be used as fast as possible (beyond a few days after the TIA/minor stroke is unlikely to
24 detect recent ischaemia and would be a waste of time for that purpose) and diagnostic sequences
25 should include those appropriate to avoid misdiagnosing haemorrhage or TIA/minor stroke mimics;
26 this is particularly critical if MR is used in patients whose presentation is delayed beyond seven days
27 when CT will not differentiate haemorrhage. Further consideration should be given to whether
28 widespread use of nurse triage is the most effective way of dealing with complex TIA/minor stroke
29 mimics which generally require some considerable medical experience to differentiate from true
30 TIA/minor stroke.
31
32
33
34
35
36
37
38
39
40
41
42
43
44
45
46
47
48
49
50
51
52
53
54
55
56
57
58
59
60

ARTICLE SUMMARY

Article focus

- Is the current provision of stroke prevention clinical services adequate to meet the volume of work in the UK?
- Is access to brain and carotid imaging adequate to meet the demand and is imaging being used efficiently?
- Who is providing these services?

Key Messages

- Most responding centres had some form of rapid access stroke prevention clinic.
- Front line assessment was by nurses in nearly a third of clinics, but about half of patients have a TIA mimic which requires medical expertise for diagnosis.
- There was efficient use CT brain and carotid ultrasound imaging, but less good access to MR brain imaging and this was often used incorrectly or inefficiently.

Strengths and limitations

- The survey covered the whole of the UK and achieved a 45% response rate.
- Clinical and imaging services responses were highly concurrent.
- Services may be much worse in areas that did not respond.

AUTHOR CONTRIBUTIONS

JM Wardlaw, M Dennis, P Sandercock conceived the idea for the study and secured funding; M Brazzelli, Z Quayum and JM Wardlaw drafted the survey; D Hadley, K Muir, P McNamee, J DeWilde, M Dennis and P Sandercock tested and edited the survey; M Brazzelli and K Shuler set up the final version of the survey into the survey software; M Dennis, JM Wardlaw, M Brazzelli and J De Wilde disseminated the survey as widely as possible; K Shuler and M Brazzelli downloaded the responses, collated and analysed the results; all authors interpreted the results; M Brazzelli and JM Wardlaw drafted the paper; all authors contributed critical comments and edited the manuscript; all authors gave their final approval for submission of the manuscript; JM Wardlaw was the principal investigator and takes full responsibility for the integrity and accuracy of the work. Thus all authors fulfil all three ICMJE criteria for authorship: 1) substantial contributions to conception and design, acquisition of data, or analysis and interpretation of data; 2) drafting the article or revising it critically for important intellectual content; 3) final approval of the version to be published.

ACKNOWLEDGEMENTS

We thank the following for their assistance in circulating the questionnaires: Dr Damian Jenkinson, Stroke Advisor, Dept of Health; Ian Golton, Barbara Zutshi, NHS Improvement Stroke Improvement Programme; Prof Tony Rudd and Ms Alex Hoffman, Royal College of Physicians London Sentinel Stroke Audit Office; the clinical leads of all 27 Stroke networks clinical leads in England; the Scottish Stroke Care Clinical Leads; NHS Improvement Database for Radiology Departments in England (Gail Powell); the MagNET Database; Prof Ian Robertson, Mr James Cannon, the Diagnostic Imaging Clinical Network, Scotland; the Scottish Radiological Society; All Scottish Regional Imaging Services Leads; Michelle Price, Stroke Collaborative, Wales; all imaging and clinical leads for stroke services in Wales.

COMPETING INTERESTS

The authors acknowledge funding for the study from the UK National Institutes of Health Research Health Technology Assessment Programme (salary for MB, ZQ). JMW and KM were supported by

1
2
3
4
5
6
7 the SINAPSE Collaboration. All authors had full unrestricted access to all the study data. The views
8 are those of the authors and not those of the funding agency. There are no other competing interests.
9
10 JMW takes responsibility for the integrity of the data and the accuracy of the data analysis.
11

12
13 **FUNDING**

14
15 The work was funded by the UK National Institutes of Health Research Health Technology
16 Assessment Programme (09/22/169). The SINAPSE Collaboration is funded by the Scottish Funding
17 Council. The Brain Research Imaging Centre is supported by NHS Lothian Research and
18
19
20
21 Development Office.
22

23
24
25
26
27
28
29
30
31
32
33
34
35
36
37
38
39
40
41
42
43
44
45
46
47
48
49
50
51
52
53
54
55
56
57
58
59
60

Formatted: Left

References

- 1 Coull AJ, Lovett JK, Rothwell PM, et al. Population based study of early risk of stroke after transient ischaemic attack or minor stroke: implications for public education and organisation of services. *BMJ* 2004;**328**:326.
- 2 Giles MF, Rothwell PM. Substantial underestimation of the need for outpatient services for TIA and minor stroke. *Age Ageing* 2007;**36**:676-80.
- 3 Wasserman J, Perry J, Dowlathshahi D, et al. Stratified, urgent care for transient ischemic attack results in low stroke rates. *Stroke* 2010;**41**:2601-5.
- 4 Rothwell PM, Giles MF, Chandratheva A, et al. Effect of urgent treatment of transient ischaemic attack and minor stroke on early recurrent stroke (EXPRESS study): a prospective population-based sequential comparison. *Lancet* 2007;**370**:1432-42.
- 5 Lavalley PC, Meseguer E, Abboud H, et al. A transient ischaemic attack clinic with round-the-clock access (SOS-TIA): feasibility and effects. *Lancet Neurol* 2007;**6**:953-60.
- 6 Bejot Y, Zeller M, Lorgis L, et al. Secondary prevention in patients with vascular disease. A population based study on the underuse of recommended medications. *J Neurol Neurosurg Psychiatry* 2013;**84**:348-53.
- 7 Sandercock PAG. Should I start all my ischaemic stroke and TIA patients on a statin, an ACE inhibitor, a diuretic, and aspirin today? *J Neurol Neurosurg Psychiatry* 2003;**74**:1461-4.
- 8 Department of Health Knowledge & Intelligence Branch. Technical Guidance for the 2011/12 Operating Framework. London: Crown 2011:1-261.

Formatted: Font: Not Bold

Formatted: Font: Not Bold, Italic, French (France)

Formatted: Font: Not Bold, French (France)

Formatted: French (France)

Formatted: Font: Not Bold, French (France)

Formatted: Font: Not Bold

Formatted: Font: Not Bold, Italic

Formatted: Font: Not Bold

Formatted: Font: Not Bold

Formatted: Font: Not Bold, Italic

Formatted: Font: Not Bold

Formatted: Font: Not Bold

9 Department of Health Payment by Results team. Payment by Results Guidance for 2011-12.

London: Crown 2011:1-136.

10 National Institute for Health and Clinical Excellence (NICE). Stroke. The diagnosis and acute management of stroke and transient ischaemic attacks. London: National Institute for Health and Clinical Excellence 2008:1-37.

11 Kane I, Whiteley WN, Sandercock PA, et al. Availability of CT and MR for assessing patients with acute stroke. *Cerebrovasc Dis* 2008;**25**:375-7.

Formatted: Font: Not Bold, Italic

Formatted: Font: Not Bold

Formatted: Font: Not Bold

12 Wardlaw JM, Keir SL, Seymour J, et al. What is the best imaging strategy for acute stroke?

Health Technol Assess 2004;**8**:1-180.

Formatted: Font: Not Bold, Italic

Formatted: Font: Not Bold

Formatted: Font: Not Bold

13 Lindley RI, Amayo EO, Marshall J, et al. Hospital services for patients with acute stroke in the United Kingdom: the Stroke Association survey of consultant opinion. *Age Ageing* 1995;**24**:525-32.

Formatted: Font: Not Bold, Italic

Formatted: Font: Not Bold

Formatted: Font: Not Bold

14 Eysenbach G. Improving the quality of web surveys: the Checklist for Reporting Results of Internet E-Surveys (CHERRIES). *J Med Internet Res* 2004;**6**:e34.

Formatted: Font: Not Bold, Italic, Danish

Formatted: Font: Not Bold, Danish

Formatted: Danish

Formatted: Font: Not Bold, Danish

15 Moreau F, Modi J, Almekhlafi M, et al. Early magnetic resonance imaging in transient ischemic attack and minor stroke: do it or lose it. *Stroke* 2013;**44**:671-4.

Formatted: Font: Not Bold

Formatted: Font: Not Bold, Italic

Formatted: Font: Not Bold

Formatted: Font: Not Bold

16 Dimigen M, Keir S, Dennis M, et al. Long-term visibility of primary intracerebral haemorrhage on MRI. *J Stroke Cerebrovasc Dis* 2004;**13**:104-8.

Formatted: Font: Not Bold, Italic

Formatted: Font: Not Bold

Formatted: Font: Not Bold

17 Wardlaw JM, Keir SL, Dennis MS. The impact of delays in computed tomography of the brain on the accuracy of diagnosis and subsequent management in patients with minor stroke. *J Neurol Neurosurg Psychiatry* 2003;**74**:77-81.

Formatted: Font: Not Bold, Italic

Formatted: Font: Not Bold

Formatted: Font: Not Bold

18 Intercollegiate Stroke Working Party. National clinical guideline for stroke. London: Royal College of Physicians 2012:1-208.

19 Burke JF, Kerber KA, Iwashyna TJ, et al. Wide variation and rising utilization of stroke magnetic resonance imaging: data from 11 states. *Ann Neurol* 2012;**71**:179-85.

Formatted: Font: Not Bold, Italic, Dutch (Netherlands)

Formatted: Font: Not Bold, Dutch (Netherlands)

Formatted: Dutch (Netherlands)

20 Burke JF, Gelb DJ, Quint DJ, et al. The impact of MRI on stroke management and outcomes: a systematic review. *J Eval Clin Pract* 2012;doi: 10.1111/jep.12011.

Formatted: Font: Not Bold, Dutch (Netherlands)

Formatted: Font: Not Bold

Formatted: Font: Not Bold, Italic

Formatted: Font: Not Bold

Formatted: Font: Not Bold

Formatted: Indent: Left: 0", Hanging: 0.25", Line spacing: Double

Formatted: Space After: 0 pt

References

1— Coull AJ, Lovett JK, Rothwell PM, et al. Population based study of early risk of stroke after transient ischaemic attack or minor stroke: implications for public education and organisation of services. *BMJ* 2004;**328**:326.

2— Giles MF, Rothwell PM. Substantial underestimation of the need for outpatient services for TIA and minor stroke. *Age Ageing* 2007;**36**:676-80.

3— Wasserman J, Perry J, Dowlatshahi D, et al. Stratified, urgent care for transient ischemic attack results in low stroke rates. *Stroke* 2010;**41**:2601-5.

4— Rothwell PM, Giles MF, Chandratheva A, et al. Effect of urgent treatment of transient ischaemic attack and minor stroke on early recurrent stroke (EXPRESS study): a prospective population-based sequential comparison. *Lancet* 2007;**370**:1432-42.

5— Lavalley PC, Meseguer E, Abboud H, et al. A transient ischaemic attack clinic with round-the-clock access (SOS-TIA): feasibility and effects. *Lancet Neurol* 2007;**6**:953-60.

Formatted: English (U.K.)

- 1
2
3
4
5
6
7 6—Bejot Y, Zeller M, Lorgis L, et al. Secondary prevention in patients with vascular disease. A
8 population based study on the underuse of recommended medications. *J Neurol Neurosurg*
9 *Psychiatry* 2013;**84**:348-53.
- 10
11
12 7—Sanderecock PAG. Should I start all my ischaemic stroke and TIA patients on a statin, an ACE
13 inhibitor, a diuretic, and aspirin today? *J Neurol Neurosurg Psychiatry* 2003;**74**:1461-4.
- 14
15
16 8—Department of Health Knowledge & Intelligence Branch. Technical Guidance for the 2011/12
17 Operating Framework. London: Crown 2011:1-261.
- 18
19
20 9—Department of Health Payment by Results team. Payment by Results Guidance for 2011-12.
21 London: Crown 2011:1-136.
- 22
23
24 10—National Institute for Health and Clinical Excellence (NICE). Stroke. The diagnosis and acute
25 management of stroke and transient ischaemic attacks. London: National Institute for Health and
26 Clinical Excellence 2008:1-37.
- 27
28
29 11—Kane I, Whiteley WN, Sanderecock PA, et al. Availability of CT and MR for assessing patients
30 with acute stroke. *Cerebrovasc Dis* 2008;**25**:375-7.
- 31
32
33 12—Wardlaw JM, Keir SL, Seymour J, et al. What is the best imaging strategy for acute stroke?
34 *Health Technol Assess* 2004;**8**:1-180.
- 35
36
37 13—Lindley RI, Amayo EO, Marshall J, et al. Hospital services for patients with acute stroke in the
38 United Kingdom: the Stroke Association survey of consultant opinion. *Age Ageing* 1995;**24**:525-
39 32.
- 40
41
42 14—Eysenbach G. Improving the quality of web surveys: the Checklist for Reporting Results of
43 Internet E-Surveys (CHERRIES). *J Med Internet Res* 2004;**6**:e34.
- 44
45
46 15—Moreau F, Modi J, Almekhlafi M, et al. Early magnetic resonance imaging in transient ischemic
47 attack and minor stroke: do it or lose it. *Stroke* 2013;**44**:671-4.
- 48
49
50 16—Dimigen M, Keir S, Dennis M, et al. Long term visibility of primary intracerebral haemorrhage
51 on MRI. *J Stroke Cerebrovasc Dis* 2004;**13**:104-8.
- 52
53
54 17—Wardlaw JM, Keir SL, Dennis MS. The impact of delays in computed tomography of the brain on
55 the accuracy of diagnosis and subsequent management in patients with minor stroke. *J Neurol*
56 *Neurosurg Psychiatry* 2003;**74**:77-81.

Formatted: English (U.K.)

- 1
2
3
4
5
6
7 18 Interecollegiate Stroke Working Party. National clinical guideline for stroke. London: Royal
8 College of Physicians 2012:1-208.
9
10 19 Burke JF, Kerber KA, Iwashyna TJ, et al. Wide variation and rising utilization of stroke magnetic
11 resonance imaging: data from 11 states. *Ann Neurol* 2012;71:179-85.
12
13 20 Burke JF, Gelb DJ, Quint DJ, et al. The impact of MRI on stroke management and outcomes: a
14 systematic review. *J Eval Clin Pract* Published Online First: 22 November 2012.doi:
15 10.1111/jep.12011.
16
17
18
19
20
21
22
23
24
25
26
27
28
29
30
31
32
33
34
35
36
37
38
39
40
41
42
43
44
45
46
47
48
49
50
51
52
53
54
55
56
57
58
59
60

Formatted: English (U.K.)

1
2
3
4
5
6
7 **FIGURE LEGENDS**
8
9

10 **FIGURE 1.** Proportion of patients attending the stroke prevention clinic who were ultimately
11 diagnosed as having TIA or minor stroke. 102/114 centres answered this question.
12
13

14
15 **FIGURE 2.** Proportion of patients suspected of TIA/minor stroke who had CT or MRI as first line
16 brain imaging investigation.
17
18
19

20 A) Imaging services survey (55/146 responders).
21

22 B) Stroke prevention services survey (101/114 responders).
23
24
25

26 **FIGURE 3.** Resources needed to expand capacity in fully saturated stroke prevention services.
27
28 77/114 responded. Participants were asked to choose all suitable answers.
29
30
31
32
33
34
35
36
37
38
39
40
41
42
43
44
45
46
47
48
49
50
51
52
53
54
55
56
57
58
59
60

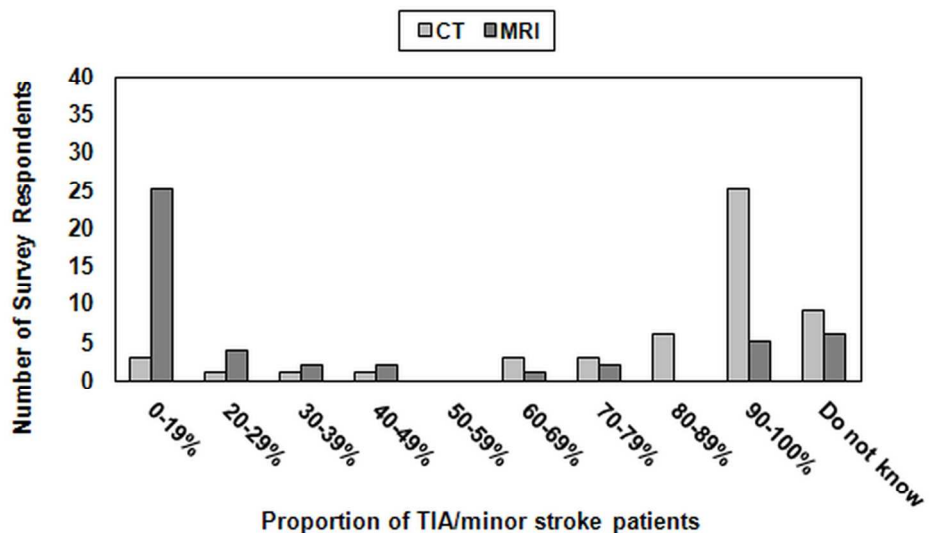


FIGURE 2. Proportion of patients suspected of TIA/minor stroke who had CT or MRI as first line brain imaging investigation.

A) Imaging services survey (55/146 responders).
147x90mm (300 x 300 DPI)

view only

1
2
3
4
5
6
7
8
9
10
11
12
13
14
15
16
17
18
19
20
21
22
23
24
25
26
27
28
29
30
31
32
33
34
35
36
37
38
39
40
41
42
43
44
45
46
47
48
49
50
51
52
53
54
55
56
57
58
59
60

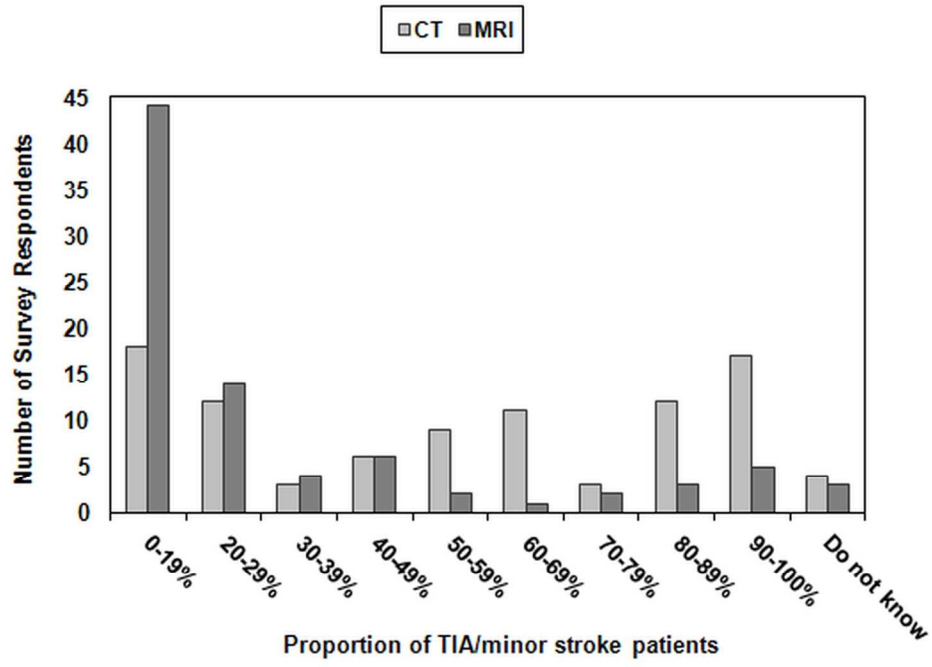


FIGURE 2. Proportion of patients suspected of TIA/minor stroke who had CT or MRI as first line brain imaging investigation.

B) Stroke prevention services survey (101/114 responders).

134x90mm (300 x 300 DPI)

For peer review only

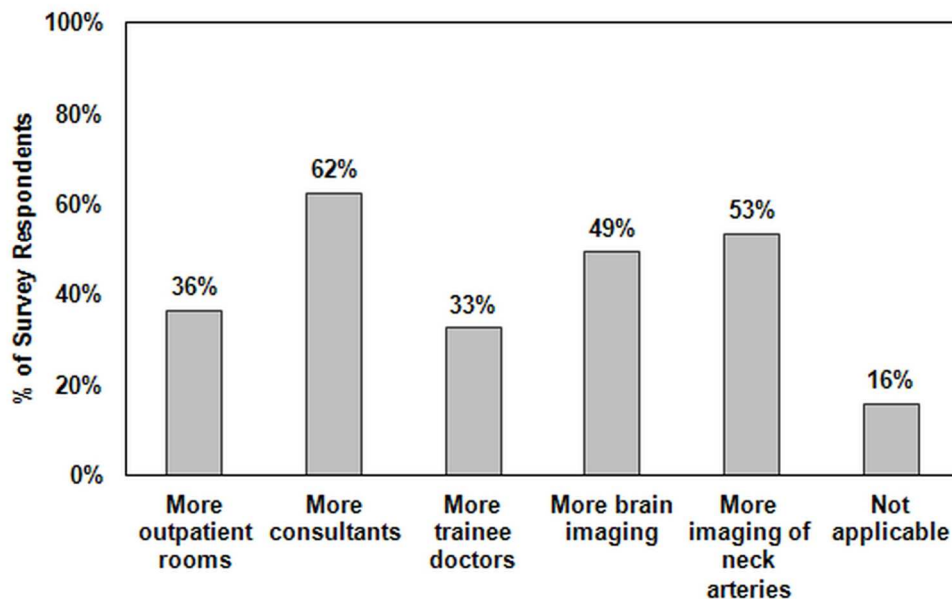


FIGURE 3. Resources needed to expand capacity in fully saturated stroke prevention services. 77/114 responded. Participants were asked to choose all suitable answers.
139x90mm (300 x 300 DPI)

Review only

SUPPLEMENTARY MATERIAL

Access to CT and MR brain scanning

The imaging services survey indicated that CT was available for TIA and minor stroke in 94% of departments (136/145 respondents) and accessible out-of-hours in 82%. MRI was available in 99% of imaging departments (133/134 respondents) and in 88% was available for TIA/minor stroke, but actual access to MR varied substantially between inpatients and outpatients and by whether the patient presented in or outside weekday office hours.

In most radiology departments that provided this information (49/56, 87%), inpatients and outpatients were managed differently. On weekdays in normal working hours, inpatients were mostly CT scanned and results provided immediately (Supplementary Table 2); of outpatients, only 59% were scanned with CT immediately or the same day and 32% waited 1-2 weeks. Outside normal weekday hours, inpatients could be CT scanned immediately in 67% of centres but was not available in 19%; outpatients commonly had CT scanning delayed by up to two weeks.

Access to MRI was more restricted, 61% (38/62) providing scanning for TIA/minor stroke on weekdays, during normal working hours without difficulty, but the rest with difficulty or not at all (Supplementary Table 3). During normal weekday hours, inpatients had MRI on the same or next day in 72% of centres (39/54 respondents), or within seven days in 26% of centres (14/54). Outpatients had MRI on the same or next day in 32% of centres (15/47 respondents), within 7-14 days in 55% of centres (26/47), and within one month in 11% of centres (5/47). Outside normal weekday hours, MR was not available or could only be performed with difficulty for TIA/minor stroke patients in most centres (48/58, 83% of centres) and could be performed without any difficulty in only 17% of centres (10/58). Out of hours, inpatients had MRI on the same or next day in 64% of centres (27/42), or within seven days in 29% of centres (12/42); outpatients had MRI on the same or next day in 32% of centres (11/35), within 4-14 days in 54% of centres (19/35) and within one month in 14% (5/35) (Table 3). Results for inpatients in normal weekday hours were generally provided immediately (83% of centres), but outpatients could wait up to seven days (27% of centres); reporting times for patients seen out of hours were longer.

Supplementary Table 1 Patients diagnosed as having TIA or minor stroke who had been prescribed secondary prevention drugs prior to attending the Stroke prevention clinic.

% of TIA minor stroke patients already on secondary prevention	% of stroke services (n/N) who answered affirmatively
20% or less	11% (11/100)
21-40%	8% (8/100)
41-60%	20% (20/100)
61-80%	24% (24/100)
81-100%	29% (29/100)

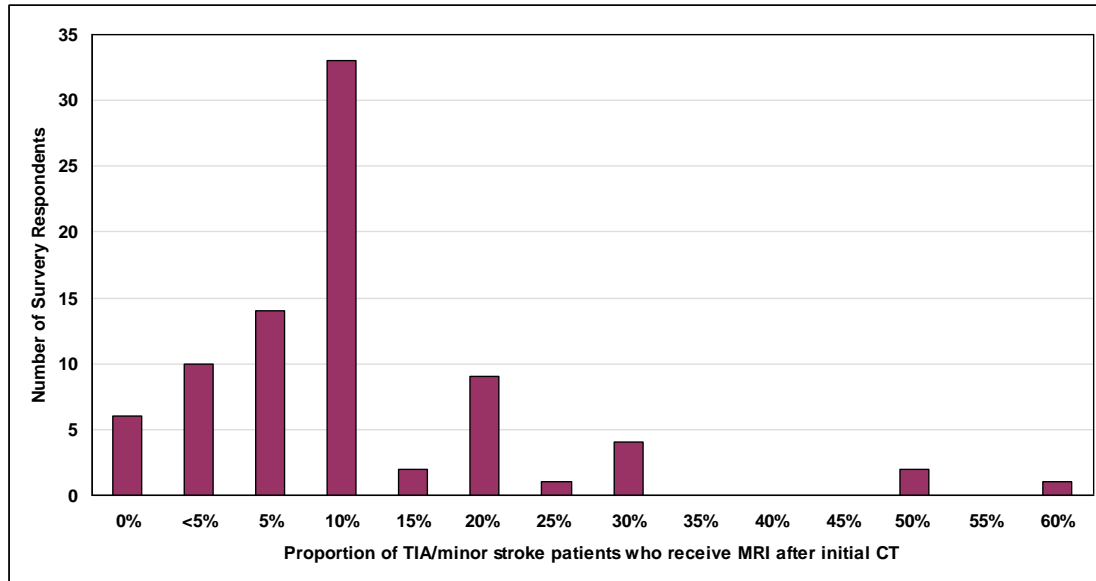
Supplementary Table 2. Operating hours of CT scanning

Weekly CT scanning (Monday to Friday during normal working hours)		
	<i>Inpatients % (n/N)</i>	<i>Outpatients % (n/N)</i>
Immediately	23% (13/56)	6% (3/51)
Same day	64% (36/56)	53% (27/51)
Next day	11% (6/56)	8% (4/51)
Within 1 week	2% (1/56)	18% (9/51)
Within 2 weeks	0%	14% (7/51)
Within 1 Month	0%	1% (1/51)
Weekend CT scanning (or outside normal working hours)		
	<i>Inpatients % (n/N)</i>	<i>Outpatients % (n/N)</i>
Immediately	17% (13/52)	12% (5/43)
Same day	48% (27/52)	26% (11/43)
Next day	33% (17/52)	28% (12/43)
Within 1 week	2% (1/52)	23% (10/43)
Within 2 weeks	0%	11% (5/43)
Within 1 Month	0%	0%

Supplementary Table 3. Operating hours of MR scanning among imaging departments

Weekly MR scanning (Monday to Friday during normal working hours)		
	<i>Inpatients % (n/N)</i>	<i>Outpatients % (n/N)</i>
Immediately	2% (1/54)	2% (1/47)
Same day	35% (19/54)	21% (10/47)
Next day	37% (20/54)	11% (5/47)
Within 1 week	20% (14/54)	30% (14/47)
Within 2 weeks	0%	25% (12/47)
Within 1 Month	0%	11% (5/47)
Weekend MR scanning (or outside normal working hours)		
	<i>Inpatients % (n/N)</i>	<i>Outpatients % (n/N)</i>
Immediately	5% (2/42)	0%
Same day	14% (6/42)	9% (3/35)
Next day	50% (21/42)	23% (8/35)
Within 1 week	29% (12/42)	40% (14/35)
Within 2 weeks	2% (1/42)	14% (5/35)
Within 1 Month	0%	14% (5/35)

Supplementary Figure 1. Use of MR after CT

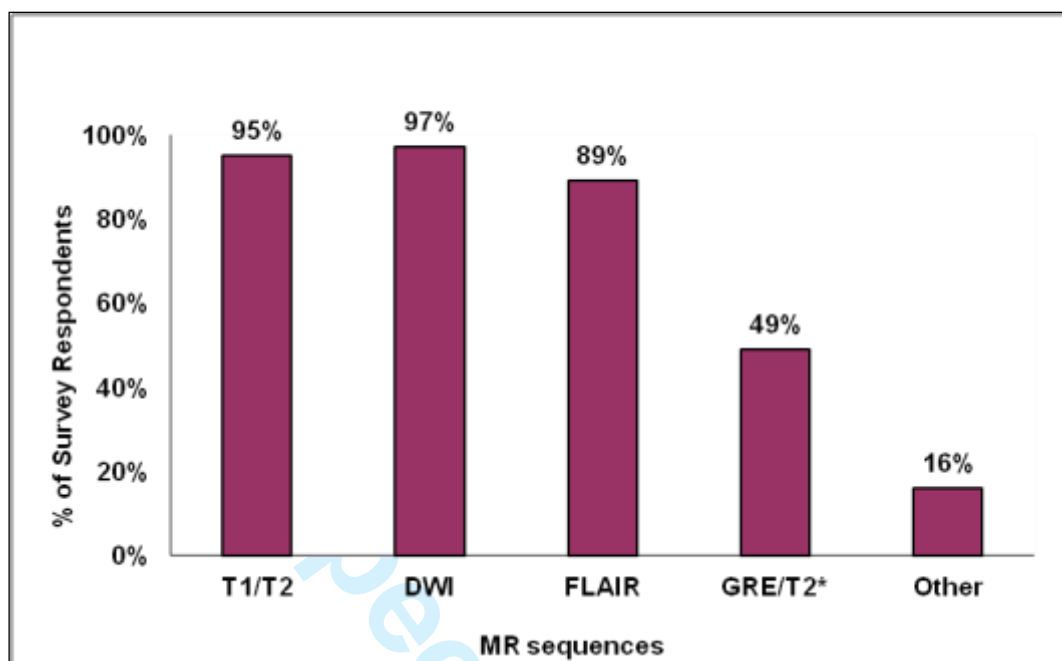


peer review only

1
2
3
4
5
6
7
8
9
10
11
12
13
14
15
16
17
18
19
20
21
22
23
24
25
26
27
28
29
30
31
32
33
34
35
36
37
38
39
40
41
42
43
44
45
46
47
48
49
50
51
52
53
54
55
56
57
58
59
60

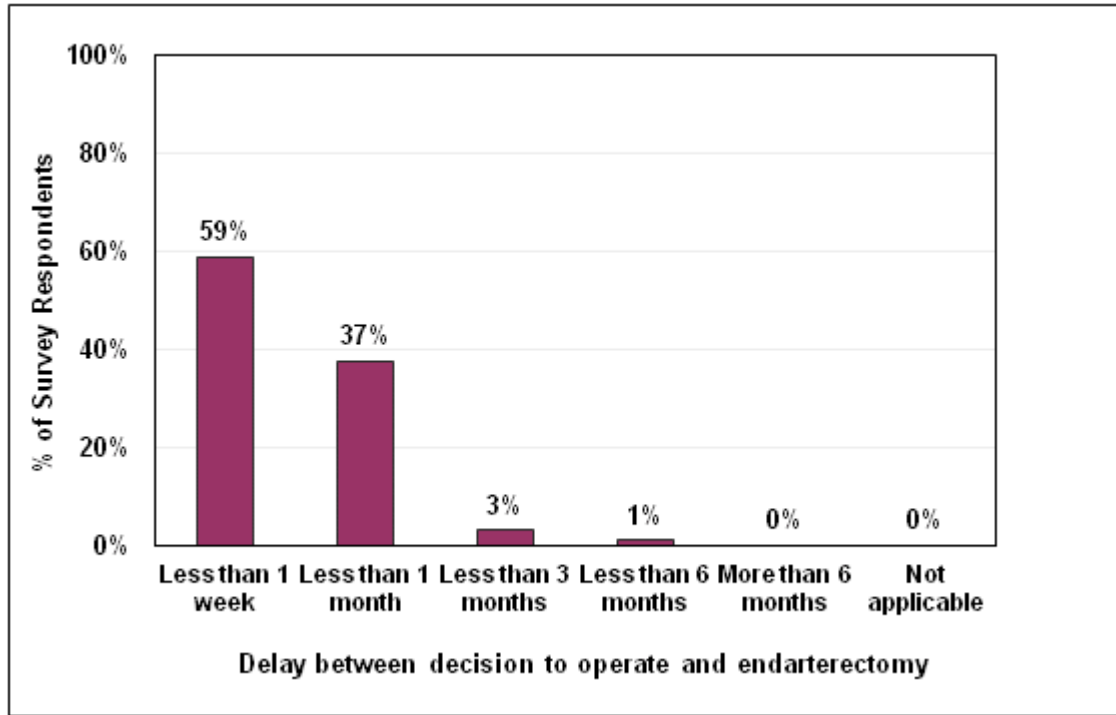
1
2
3
4
5
6
7
8
9
10
11
12
13
14
15
16
17
18
19
20
21
22
23
24
25
26
27
28
29
30
31
32
33
34
35
36
37
38
39
40
41
42
43
44
45
46
47
48
49
50
51
52
53
54
55
56
57
58
59
60

Supplementary Figure 2. MR sequences used to assess patients with suspected TIA/minor stroke in the surveyed radiology departments. 128/146 centres answered this question.



1
2
3
4
5
6
7
8
9
10
11
12
13
14
15
16
17
18
19
20
21
22
23
24
25
26
27
28
29
30
31
32
33
34
35
36
37
38
39
40
41
42
43
44
45
46
47
48
49
50
51
52
53
54
55
56
57
58
59
60

Supplementary Figure 3. Delay between the decision to perform endarterectomy and the surgical procedure (99/114 respondents).



review only

Item Category	Checklist Item	YES (the criterion is satisfied)/NO (the criterion is not satisfied)
Design		
	Describe survey design	YES. The paper provides information on the target population and sample.
IRB (Institutional Review Board) approval and informed consent process		
	IRB approval	Not applicable.
	Informed consent	YES. Participants were informed on the purpose, characteristics and length of the surveys and on the fact that any collected information was treated confidentially. Both surveys included a consent statement to which each participant agreed. The paper refers to the participants' informed consent.
	Data protection	YES. Any information was treated confidentially and anonymity of the participants was preserved. This is stated in the paper.
Development and pre-testing		
	Development and testing	YES. Information on how the surveys were developed and on the initial testing phase is provided in the paper.
Recruitment process and description of the sample having access		

<i>Item Category</i>	<i>Checklist Item</i>	<i>YES (the criterion is satisfied)/NO (the criterion is not satisfied)</i>
to the questionnaire		
	Open survey versus closed survey	YES. Open surveys. An electronic link was sent to each participant for each questionnaire.
	Contact mode	YES. Methods by which the participants were contacted are clearly described in the paper.
	Advertising the survey	YES. Information on the surveys was disseminated throughout professional bodies' websites and newsletters.
Survey administration		
	Web/E-mail	YES. Information on the type of surveys is reported in the paper. The web links to the two electronic surveys were either e-mail to the participants or posted.
	Context	YES. The paper contains information on how the electronic surveys were developed (survey monkey software) and on the research group who designed them.
	Mandatory/voluntary	YES. Voluntary surveys.
	Incentives	YES. The paper clearly states that no incentives were offered .
	Time/Date	YES. The paper reports the period in which data were collected.
	Randomization of items or	NO. We did not deem necessary to randomize or

<i>Item Category</i>	<i>Checklist Item</i>	<i>YES (the criterion is satisfied)/NO (the criterion is not satisfied)</i>
	questionnaires	alternate questionnaires.
	Adaptive questioning	YES. According to the answers provided some questions could be skipped.
	Number of Items	YES. Questions were numbered progressively. The number of questions in each questionnaire is reported in the paper.
	Number of screens (pages)	YES. Each page contained a question (in a few cases a sub related question was included in the same page).
	Completeness check	YES. The survey questionnaires had a progress indicator on each page.
	Review step	YES. The participants were able to review and/or change their answers (through a Back button).
Response rates		
	Unique site visitor	NO. We did not formally put in place a mechanism to determine the number of 'unique visitors'. However we asked the participants to provide their demographic information and we used these details to check the relevant centres/hospitals in the UK that replied to the questionnaires.
	View rate (Ratio of unique survey visitors/unique site visitors)	NO.
	Participation rate (Ratio of unique visitors who agreed to participate/unique first survey)	NO. We were not in the position to determine a 'recruitment rate'. As for the way the surveys were developed and disseminated, we were not able to

<i>Item Category</i>	<i>Checklist Item</i>	<i>YES (the criterion is satisfied)/NO (the criterion is not satisfied)</i>
	page visitors)	count the number of people who agreed to participate and divide it by the visitors who visit the first page of the survey.
	Completion rate (Ratio of users who finished the survey/users who agreed to participate)	YES. Information on completion of both questionnaires is described in the paper.
Preventing multiple entries from the same individual		
	Cookies used	Not applicable . Survey Monkey software does not allow for cookies to be used.
	IP check	Not applicable. We were not in the position to prevent users with the same IP address to access the surveys twice.
	Log file analysis	NO. No specific techniques to analyse the log file for identification of multiple entries were used.
	Registration	NO. No specific techniques were used to prevent duplicate entries from the same user. However, demographic information was provided by the participants and we used these details to check for duplicate entries.
Analysis		
	Handling of incomplete questionnaires	YES. Completed and partially completed questionnaires were analysed.

<i>Item Category</i>	<i>Checklist Item</i>	<i>YES (the criterion is satisfied)/NO (the criterion is not satisfied)</i>
	Questionnaires submitted with an atypical timestamp	Not applicable. We were not in the position to measure the time people needed to fill in the questionnaires and exclude those that were completed too soon or within a pre-determined timeframe.
	Statistical correction	NO. No specific methods were used to adjust for the non-representative sample.