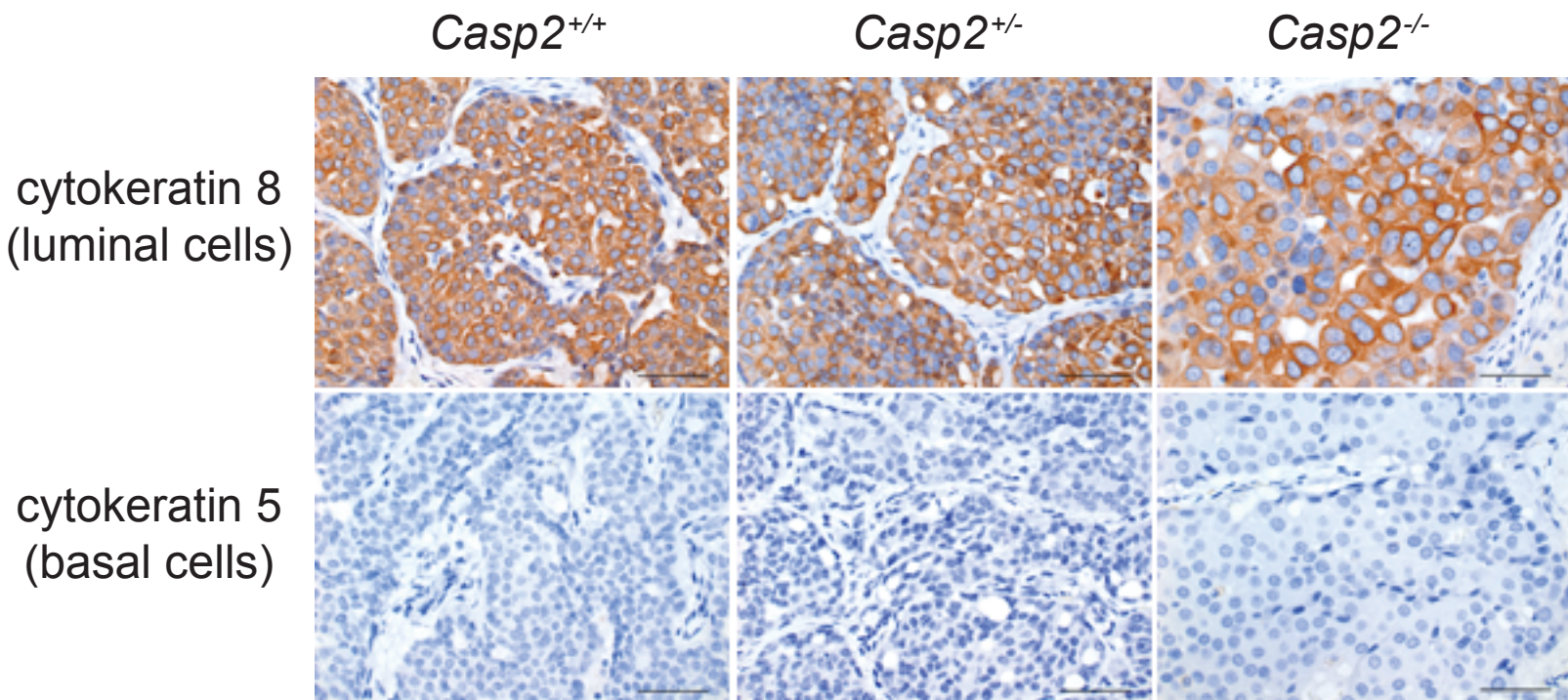


## Supplemental Figure 2



Supplemental Figure 2. *Casp2*<sup>+/+</sup>/*MMTV*, *Casp2*<sup>+/-</sup>/*MMTV* and *Casp2*<sup>-/-</sup>/*MMTV* multiparous tumors consist primarily of luminal breast cells. Representative images of *Casp2*<sup>+/+</sup>/*MMTV*, *Casp2*<sup>+/-</sup>/*MMTV* and *Casp2*<sup>-/-</sup>/*MMTV* tumors stained with cytokeratin 8 (top panels) or cytokeratin 5 (bottom panels) to show luminal and basal cells respectively are shown. Images were obtained with a 40X objective. Scale bars represent 50 microns.