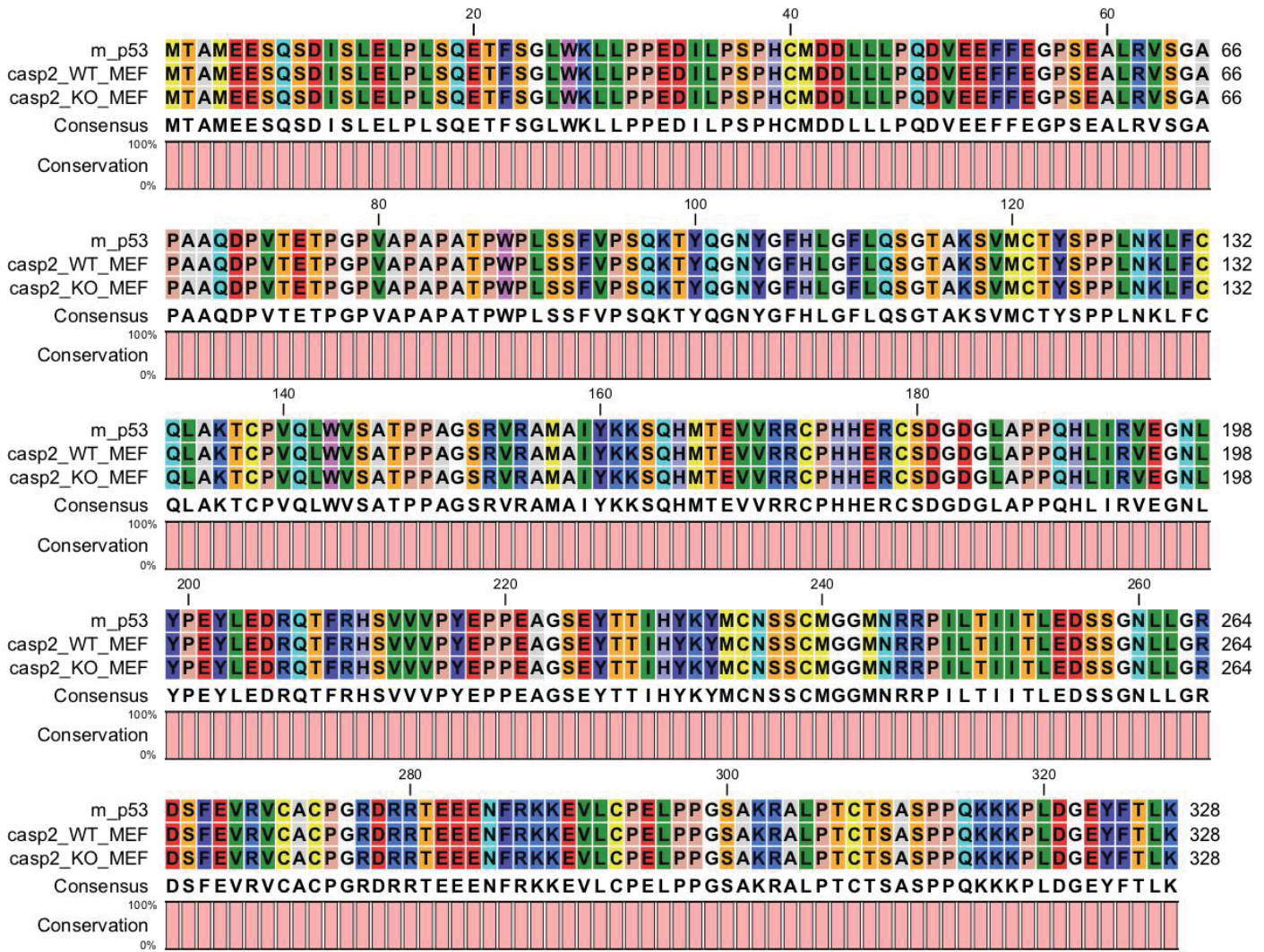


Supplemental Figure 4



Supplemental Figure 4. *p53* is not mutated in *Casp2*^{+/+} or *Casp2*^{-/-} MEFs. Shown is the protein alignment of murine *p53* (RefSeq: NM_011640) with *p53* from *Casp2*^{+/+} and *Casp2*^{-/-} MEFs. Each exon of *p53* was amplified from DNA isolated from *Casp2*^{+/+} or *Casp2*^{-/-} MEFs, TOPO cloned and sequenced as described in the Materials and Methods.