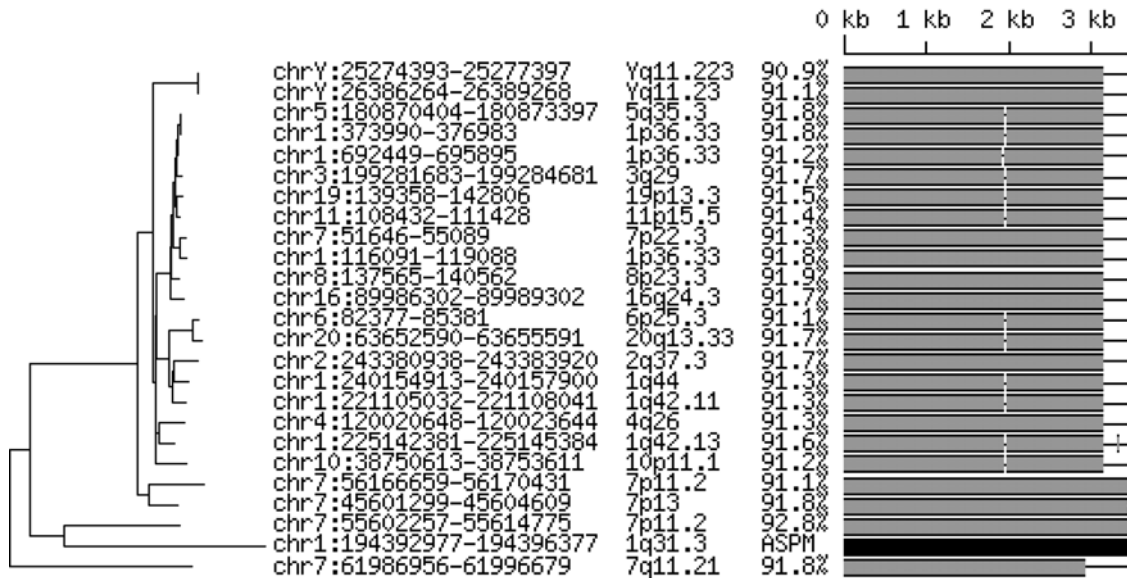


Figure 2S Segmental duplications of the fourth internal intron



From left to right: phylogeny, chromosomal positions, cytogenetic band name, identity to *ASPM* segment (%), and a schematic alignment of segmental duplications. The *ASPM* segment (black) shares similarity with 24 segmental duplications that contain additional sequences and are present on several human chromosomes. The *ASPM* copy and three duplications on chromosome 7 share the same L1P4 terminal insertion, which is absent from all other duplications. The tree on the left shows evolutionary relationships among the duplications estimated by the neighbor-joining method.