

Supplementary Figure 1

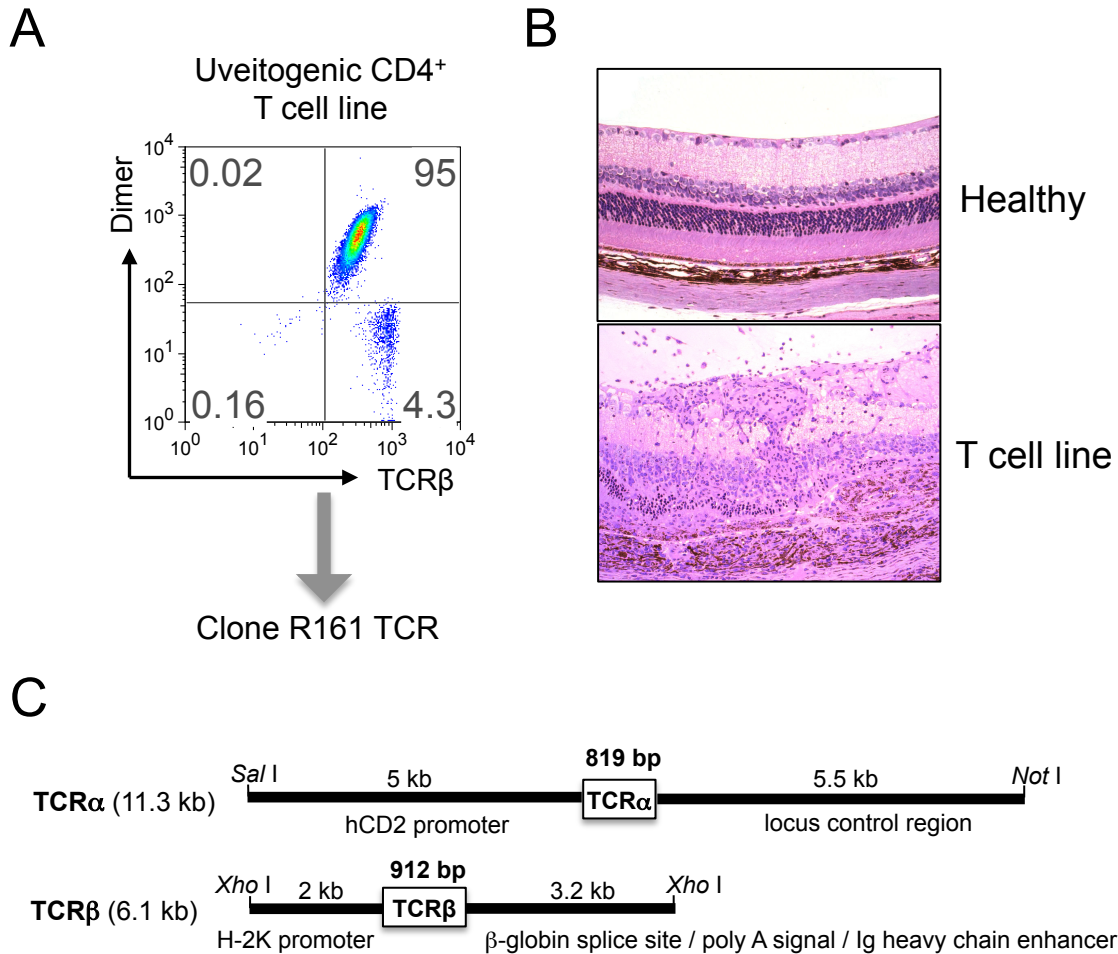


Figure S1. Cloning and vector construction of IRBP-specific TCR α and β chains to generate IRBP-specific TCR transgenic (R161) mice.

A. IRBP₁₆₁₋₁₈₀-specific CD4⁺ T cell line was established from lymphocytes of B10.RIII WT mice that had been immunized for EAU. The cell line binds to IRBP-specific MHCII-Ig dimer (95% positive). R161 TCR was cloned from this line. **B.** Severe EAU was induced in naïve mice by $0.1 \sim 1 \times 10^6$ cells from the uveitogenic T cell line. Compare the histology to healthy retina (original mag. x200). **C.** The cloned TCR α and β cDNAs were placed under the control of human CD2 promoter and mouse H-2K promoter, respectively, using plasmid constructs described by Zhumabekov, et al, (27) and Pircher et al (28).