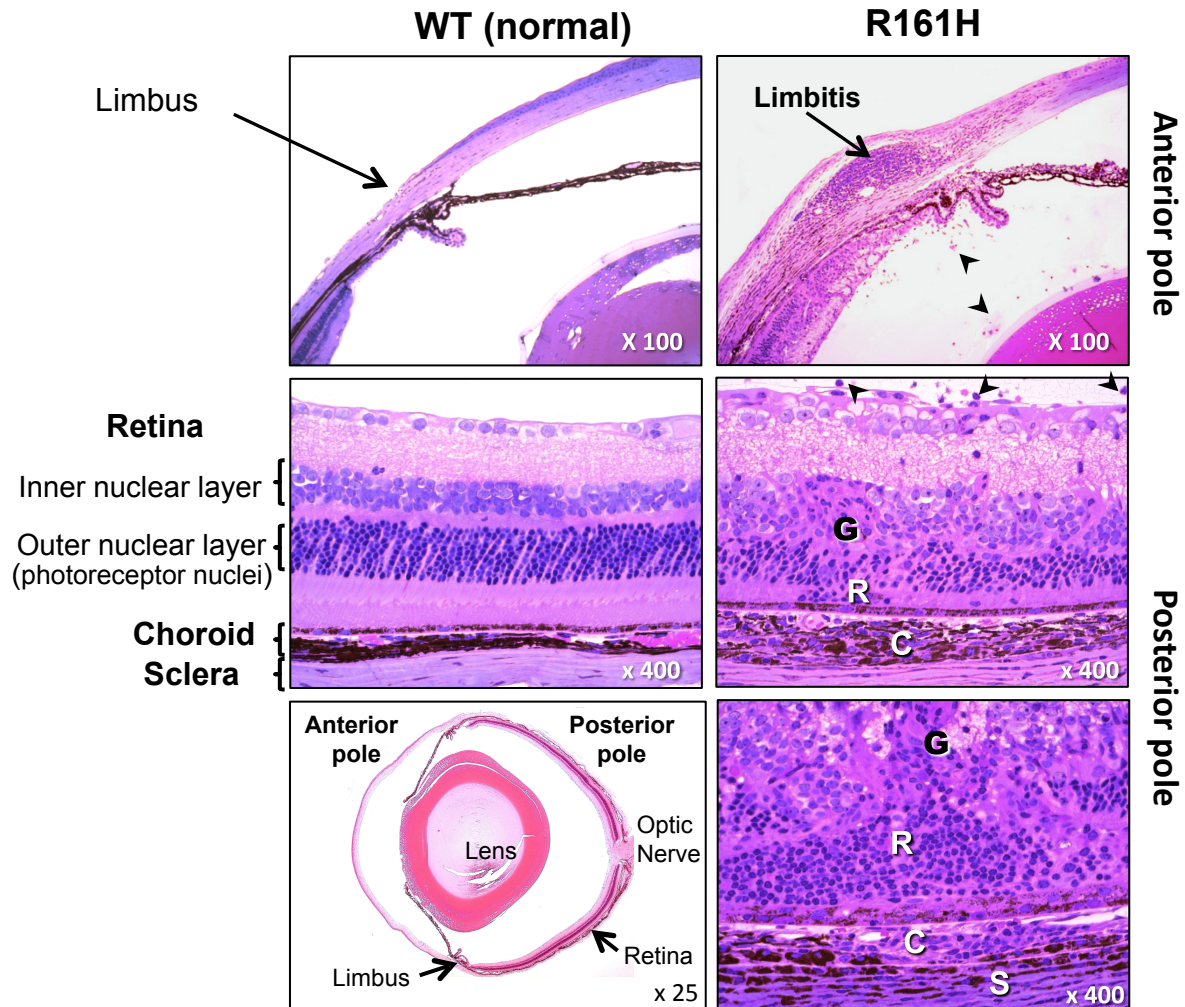


## Supplementary Figure 2



**Figure S2. Histopathology of spontaneous ocular inflammation in R161H mice.**

Left panels: histology of normal mouse eye (original mag. is indicated in the frame). Right panels: histology of spontaneous uveitis in R161H mice. Top – anterior (limbus, iris and ciliary body). Middle and bottom – posterior (retina, choroid, sclera). Note limbitis (arrow), inflammatory cell infiltration in aqueous and vitreous (arrowheads), retinitis (R), choroiditis (C), scleritis (S) and granuloma (G).