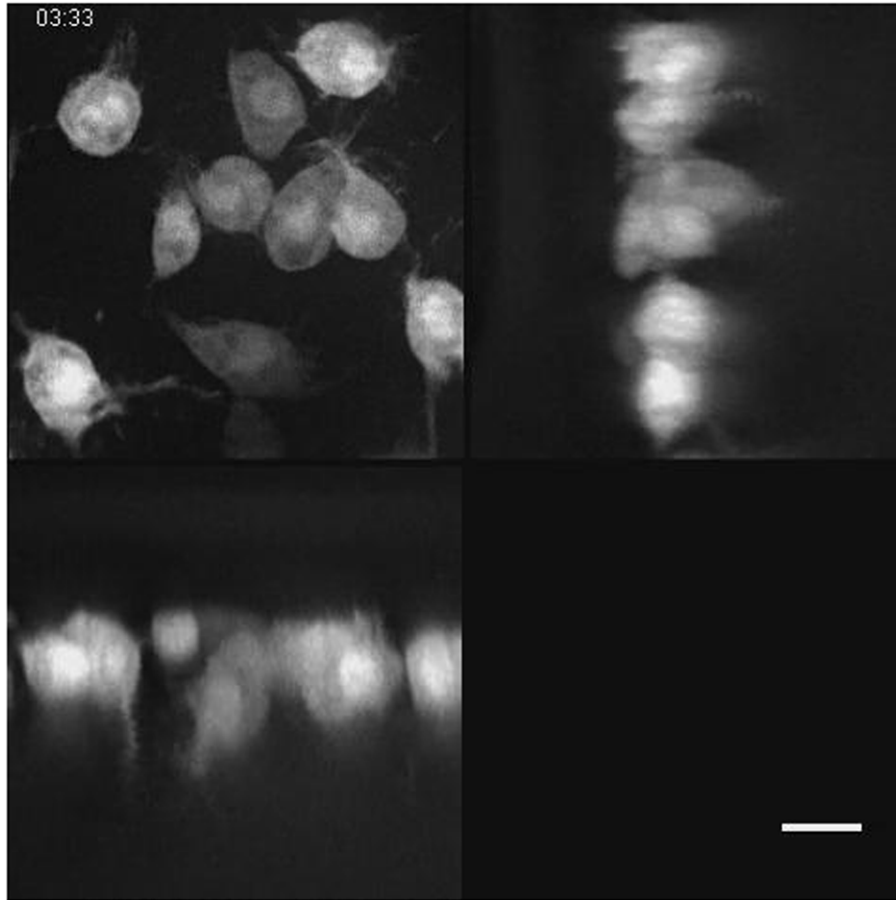
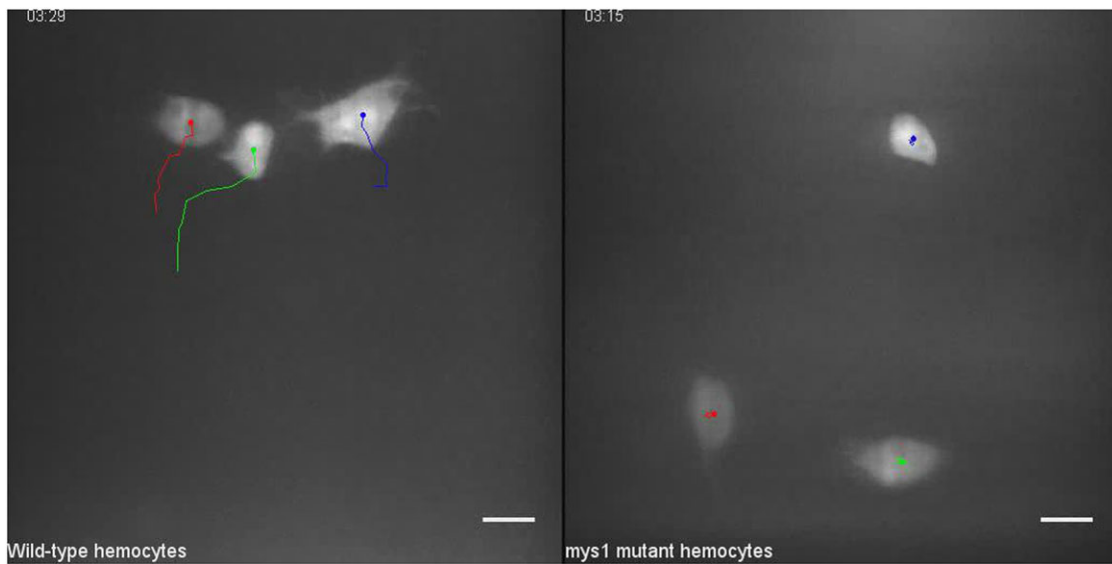


## Supplementary Material

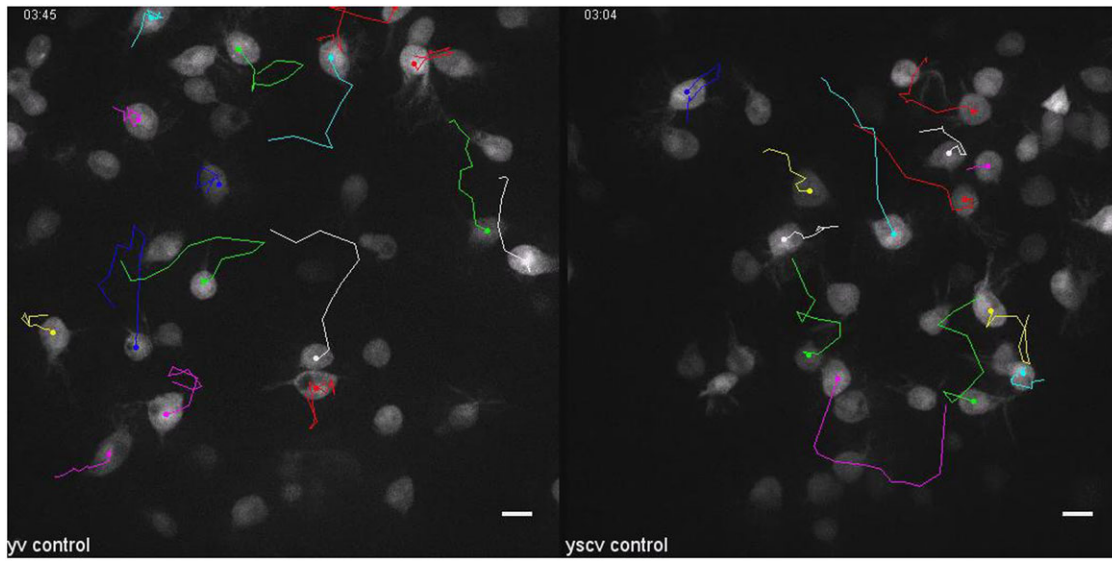
Carolina G. A. Moreira et al. doi: 10.1242/bio.20134564



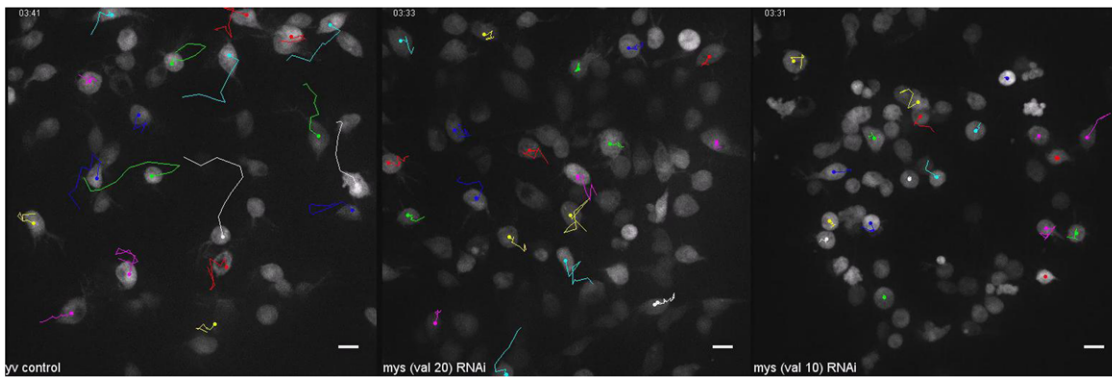
**Movie 1.**  $\gamma^1\nu^1$  control  $hml^A$ -expressing dorsal patch-hemocytes migrating in a pupa, 3h32min APF. Frames taken every 30 seconds using a 60 $\times$  oil objective in a spinning disc confocal microscope. xy, xz and yz projections are shown. Scale bar: 10  $\mu$ m in all dimensions.



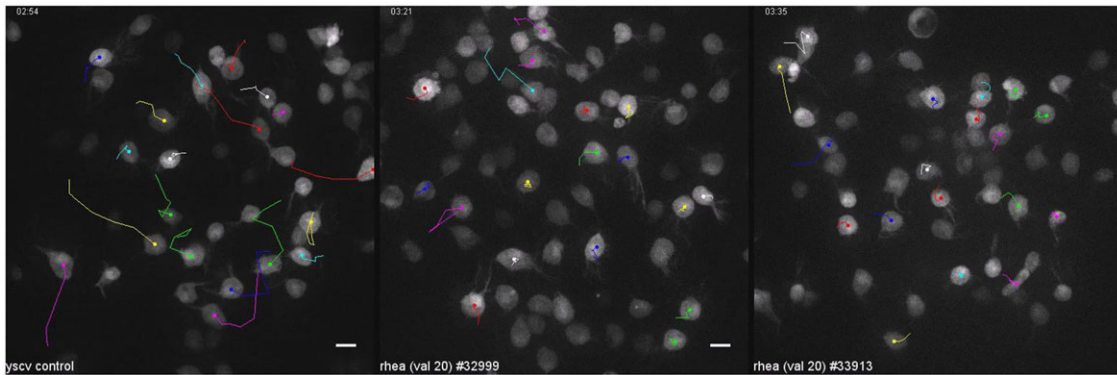
**Movie 2.** Wild-type and  $mys^1$  mutant MARCM/DEMON generated  $hml^A$ -expressing dorsal patch-hemocytes migrating in pupas, between 2 and 4 hours APF. Frames were taken every 1 minute using a confocal microscope. Scale bars: 10  $\mu$ m.



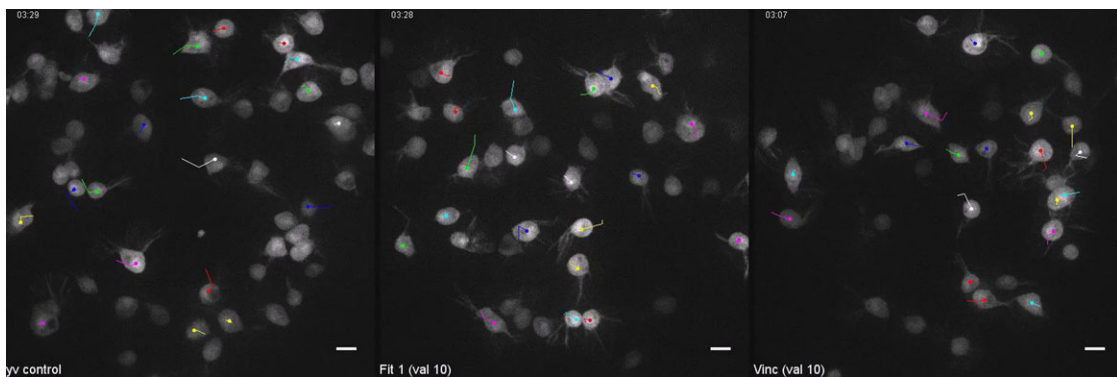
**Movie 3.**  $y^1v^1$  and  $y^1sc^1v^1$  control  $hml^A$ -expressing dorsal patch-hemocytes migrating in pupas, between 2h40min and 4 hours APF. Frames were taken every 2 minutes using a spinning disc confocal microscope. Scale bars: 10  $\mu$ m.



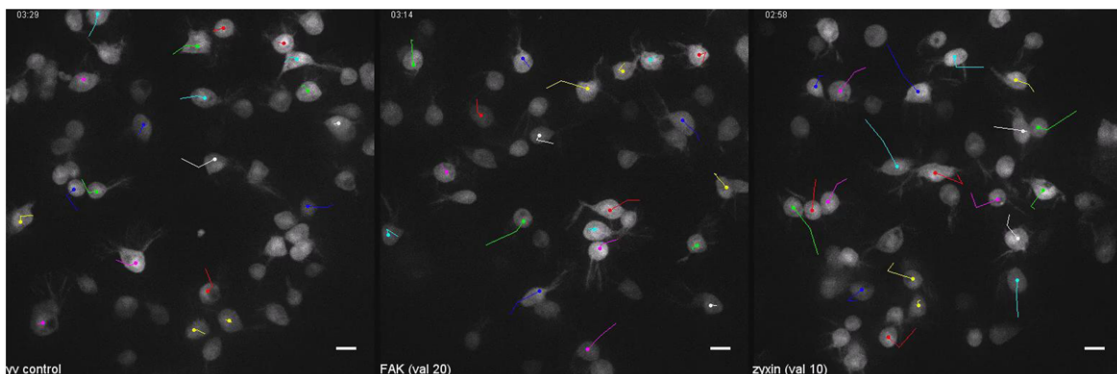
**Movie 4.**  $y^1v^1$  control, myspheroid (val 20) and myspheroid (val 10) RNAi-depleted  $hml^A$ -expressing dorsal patch-hemocytes migrating in pupas, between 3h15min and 4 hours APF. Frames were taken every 2 minutes using a spinning disc confocal microscope. Scale bars: 10  $\mu$ m.



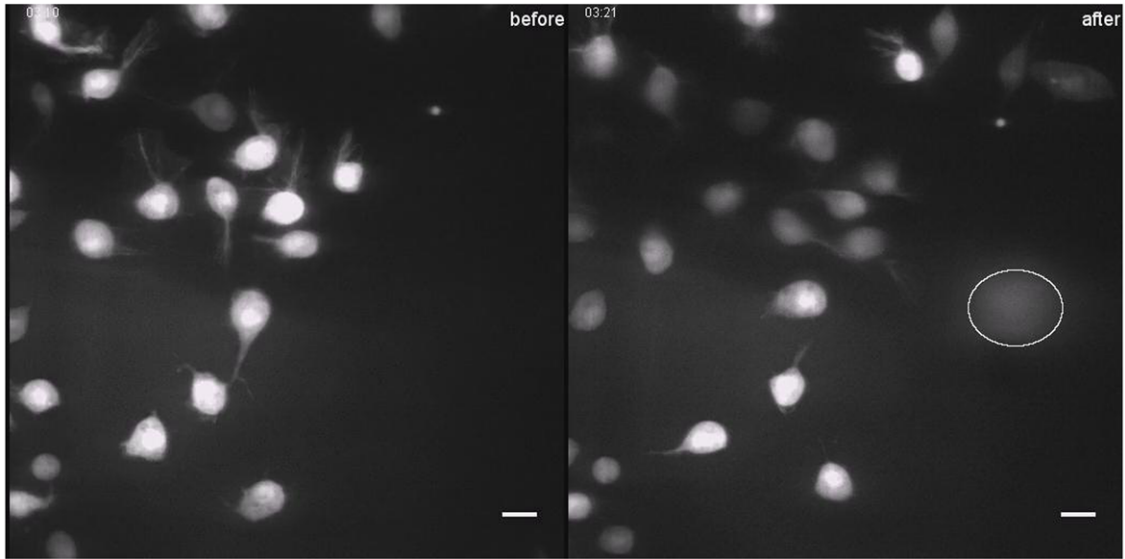
**Movie 5.**  $\gamma^1sc^1v^1$  control, rhea (val 20) # 32999 and rhea (val 20) # 33913 RNAi-depleted  $hml^A$ -expressing dorsal patch-hemocytes migrating in pupas, between 2h40min and 4 hours APF. Frames were taken every 2 minutes using a spinning disc confocal microscope. Scale bars: 10  $\mu$ m.



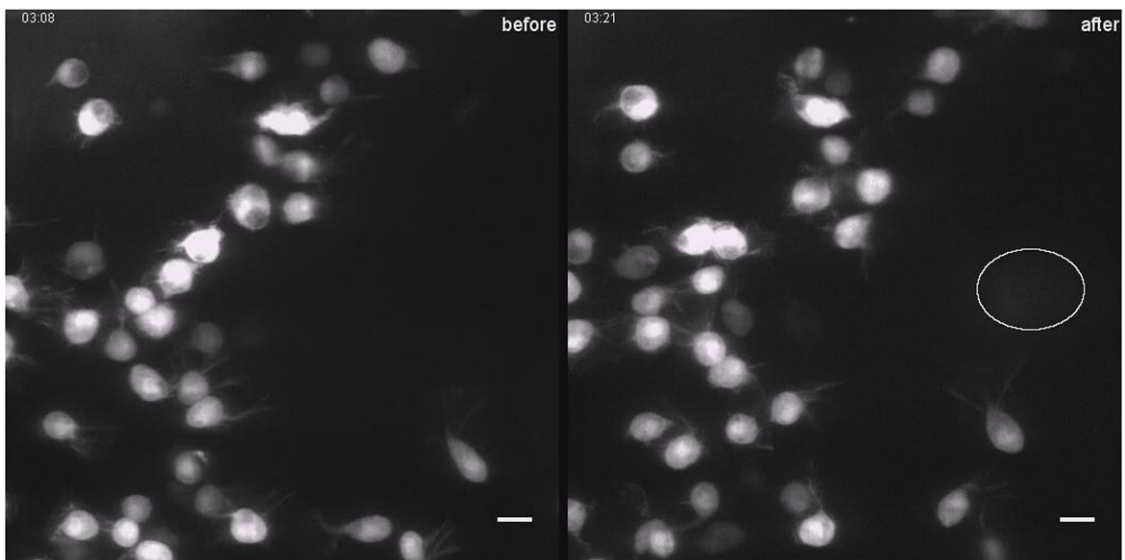
**Movie 6.**  $\gamma^1v^1$  control, feritin 1 (val 10) and vinculin (val 10) RNAi-depleted  $hml^A$ -expressing dorsal patch-hemocytes migrating in pupas, between 3 and 4 hours APF. Frames were taken every 2 minutes using a spinning disc confocal microscope. Scale bars: 10  $\mu$ m.



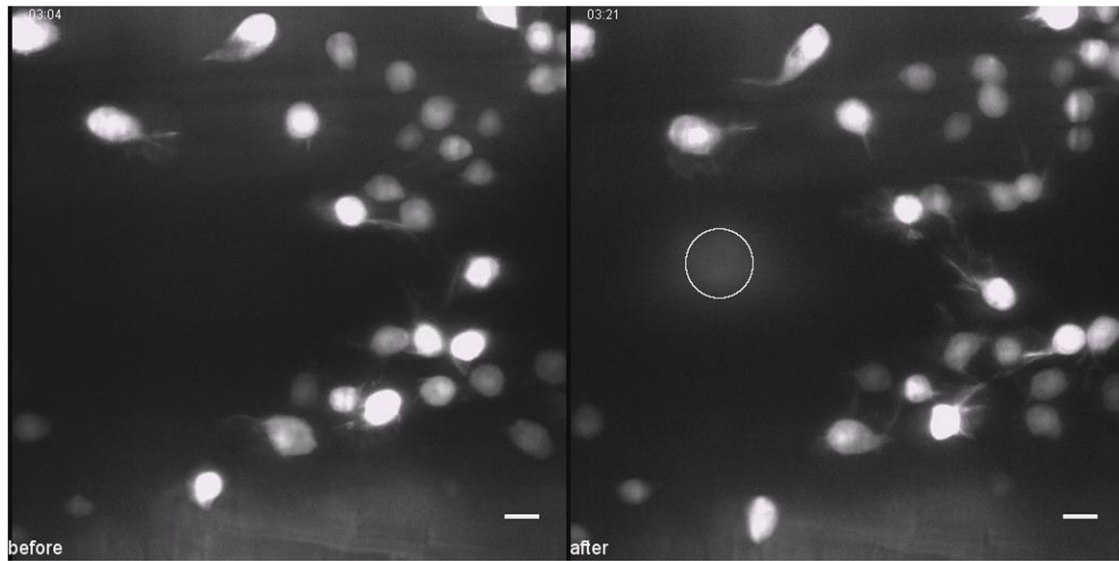
**Movie 7.**  $\gamma^1v^1$  control, FAK (val 20) and zyxin (val 10) RNAi-depleted  $hml^A$ -expressing dorsal patch-hemocytes migrating in pupas, between 2h50min and 4 hours APF. Frames were taken every 2 minutes using a spinning disc confocal microscope. Scale bars: 10  $\mu$ m.



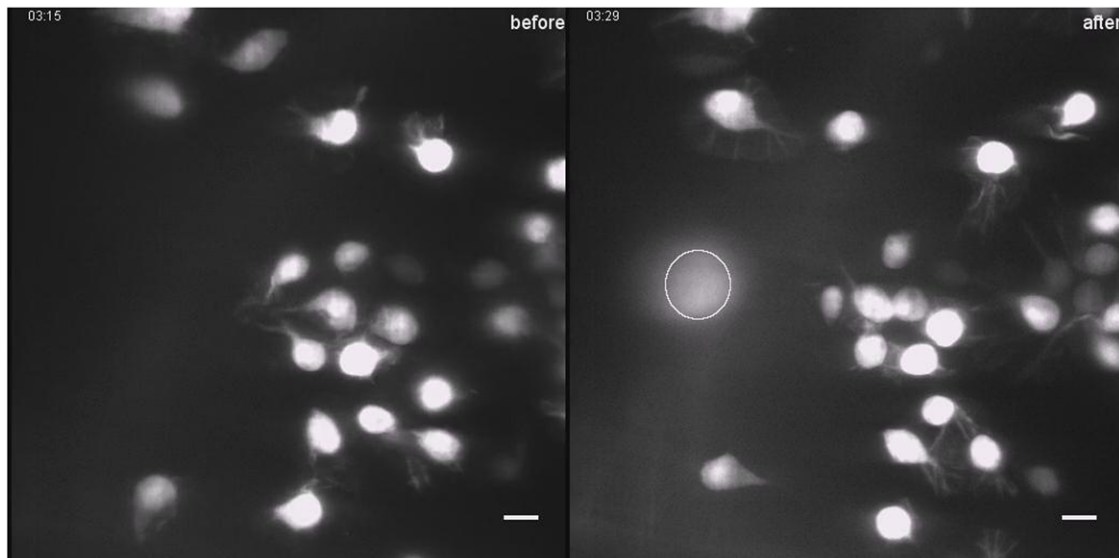
**Movie 8.**  $y^1v^1$  control  $hml^A$ -expressing dorsal patch-hemocytes migrating in a 3 hour APF pupa before (10 timepoints) and after (30 timepoints) wounding. Frames were taken every 2 minutes using a confocal microscope. Scale bars: 10  $\mu$ m.



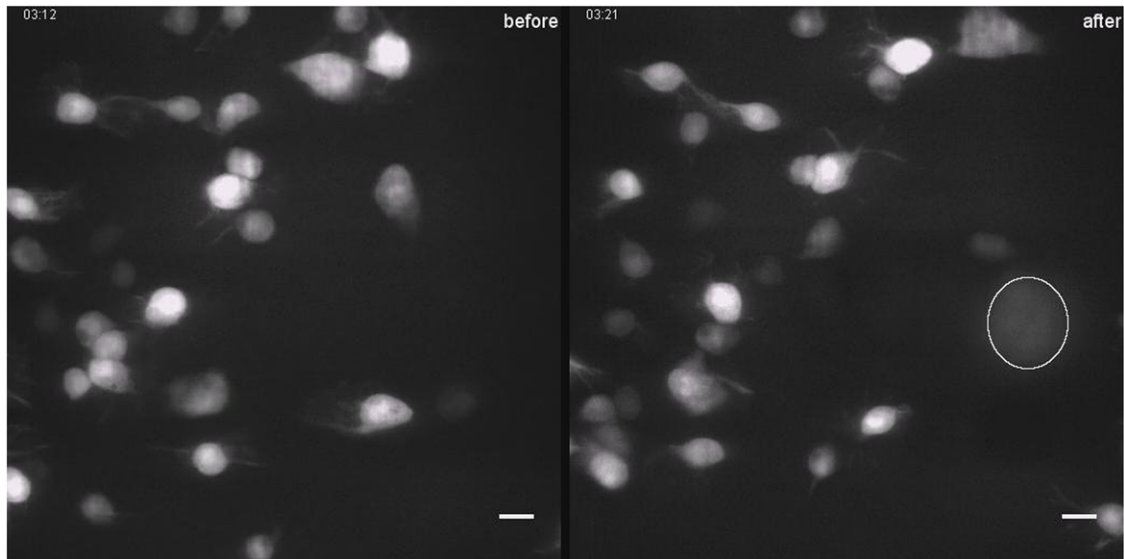
**Movie 9.** myospheroid (val 20) RNAi-depleted  $hml^A$ -expressing dorsal patch-hemocytes migrating in a 3 hour APF pupa before (10 timepoints) and after (30 timepoints) wounding. Frames were taken every 2 minutes using a confocal microscope. Scale bars: 10  $\mu$ m.



**Movie 10.** *rhea* (val 20) # 32999 RNAi-depleted *hml<sup>A</sup>*-expressing dorsal patch-hemocytes migrating in a 3 hour APF pupa before (10 timepoints) and after (30 timepoints) wounding. Frames were taken every 2 minutes using a confocal microscope. Scale bars: 10  $\mu$ m.



**Movie 11.** *fermitin 1* (val 10) RNAi-depleted *hml<sup>A</sup>*-expressing dorsal patch-hemocytes migrating in a 3 hour APF pupa before (10 timepoints) and after (30 timepoints) wounding. Frames were taken every 2 minutes using a confocal microscope. Scale bars: 10  $\mu$ m.



**Movie 12.** zyxin (val 10) RNAi-depleted  $hml^A$ -expressing dorsal patch-hemocytes migrating in a 3 hour APF pupa before (10 timepoints) and after (30 timepoints) wounding. Frames were taken every 2 minutes using a confocal microscope. Scale bars: 10  $\mu$ m.