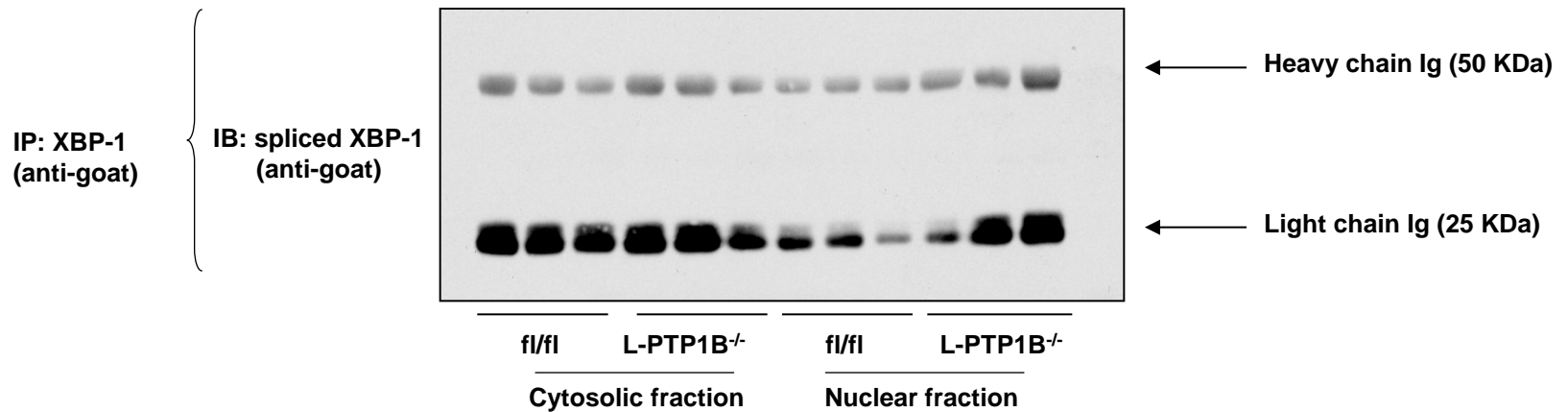


Supplemental figure 1



Immunoprecipitation of XBP-1 using anti-goat antibody and immunoblotting with same antibody anti-goat doesn't pick up XBP-1, but only the heavy and light chains of immunoglobulins (Ig) because XBP-1 runs closely to the heavy chain (~54 KDa). Therefore, to visualize XBP-1 expression we used an anti-XBP-1 raised in rabbit (see figure 4I).