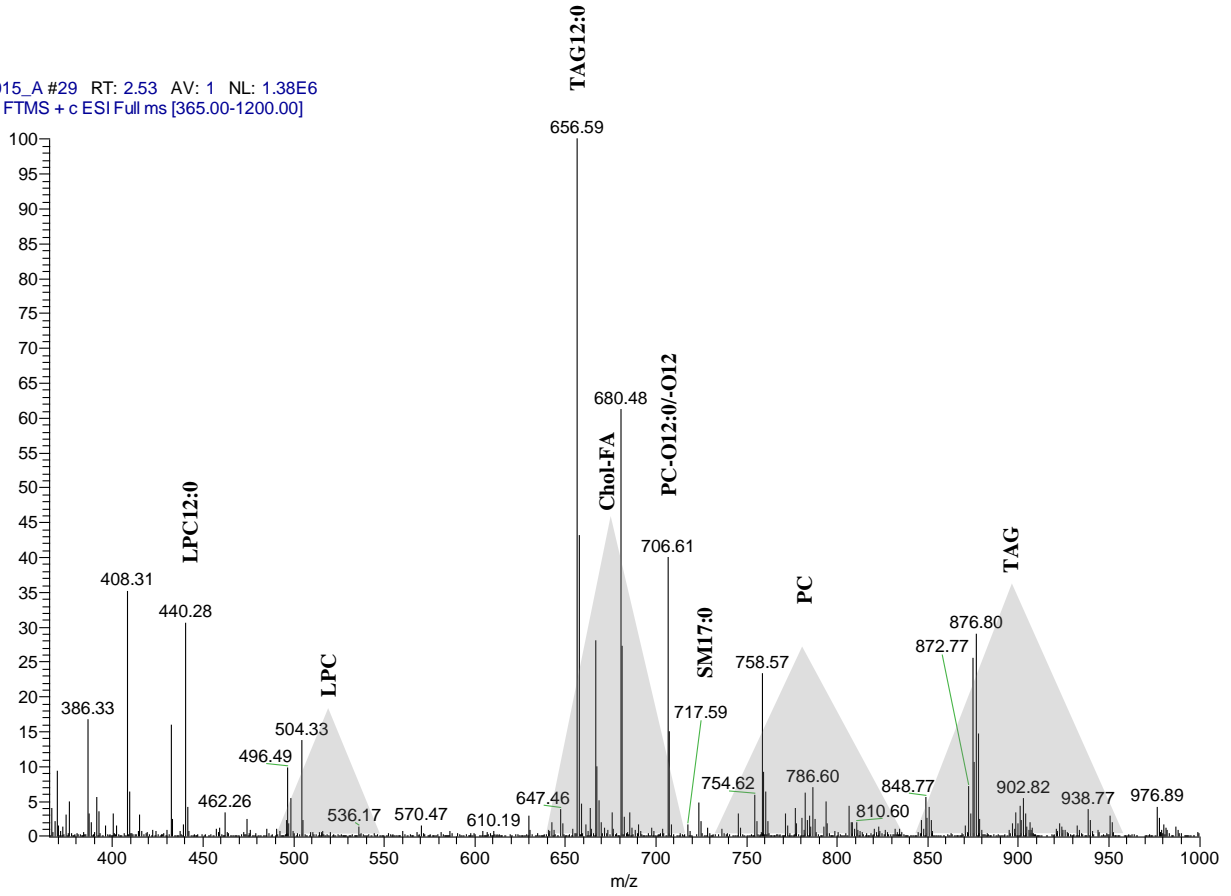


# Supplementary Figure S1A

3015\_A #29 RT: 2.53 AV: 1 NL: 1.38E6  
T: FTMS + c.ESI Full ms [365.00-1200.00]



# Supplementary Figure S1B

2668\_B #25 RT: 2.13 AV: 1 NL: 1.57E6  
T: FTMS + c ESI Full ms [365.00-1200.00]

