

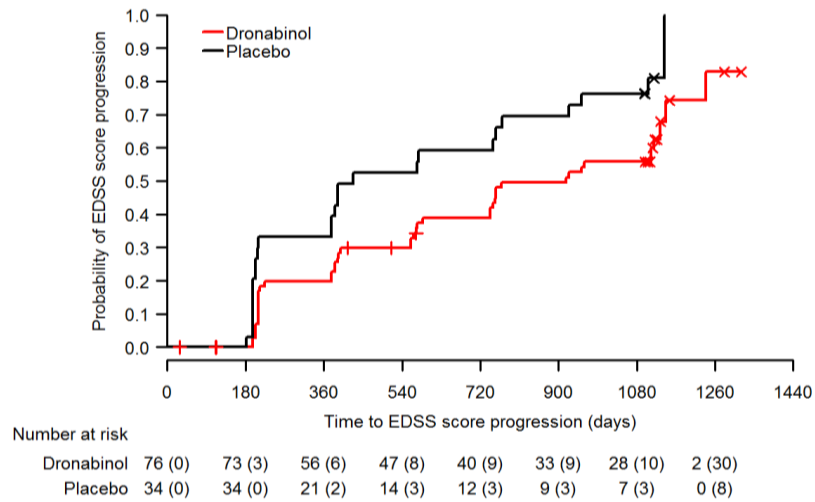
THE LANCET **Neurology**

Supplementary webappendix

This webappendix formed part of the original submission and has been peer reviewed. We post it as supplied by the authors.

Supplement to: Zajicek J, Ball S, Wright D, et al, on behalf of the CUPID investigator group. Effect of dronabinol on progression in progressive multiple sclerosis (CUPID): a randomised, placebo-controlled trial. *Lancet Neurol* 2013; published online July 13. [http://dx.doi.org/10.1016/S1474-4422\(13\)70159-5](http://dx.doi.org/10.1016/S1474-4422(13)70159-5).

Subgroup analysis of time to EDSS score progression in patients with a baseline EDSS score of 4-5.5.



Kaplan-Meier estimates of the probability of EDSS score progression, confirmed after 6 months, for those patients with baseline EDSS 4-5.5 (n=110). Numbers accompanying the numbers at risk in parentheses are the cumulative number of censored observations. + = patients who were lost to follow-up during the trial. x = patients who reached the end of the trial without progressing.