

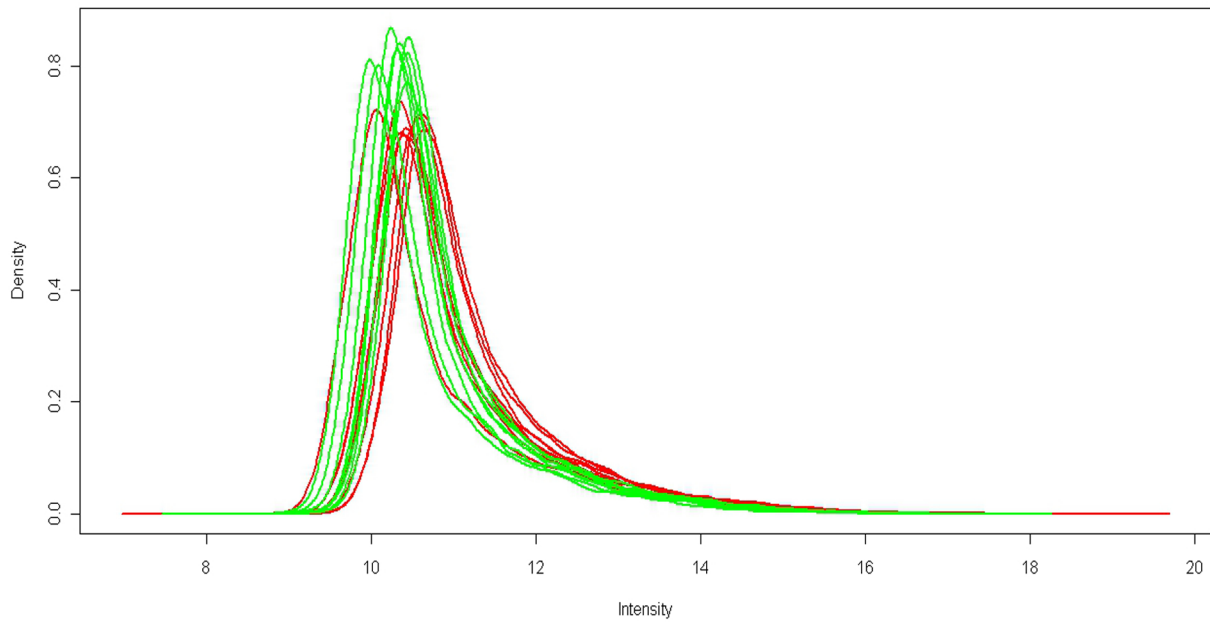
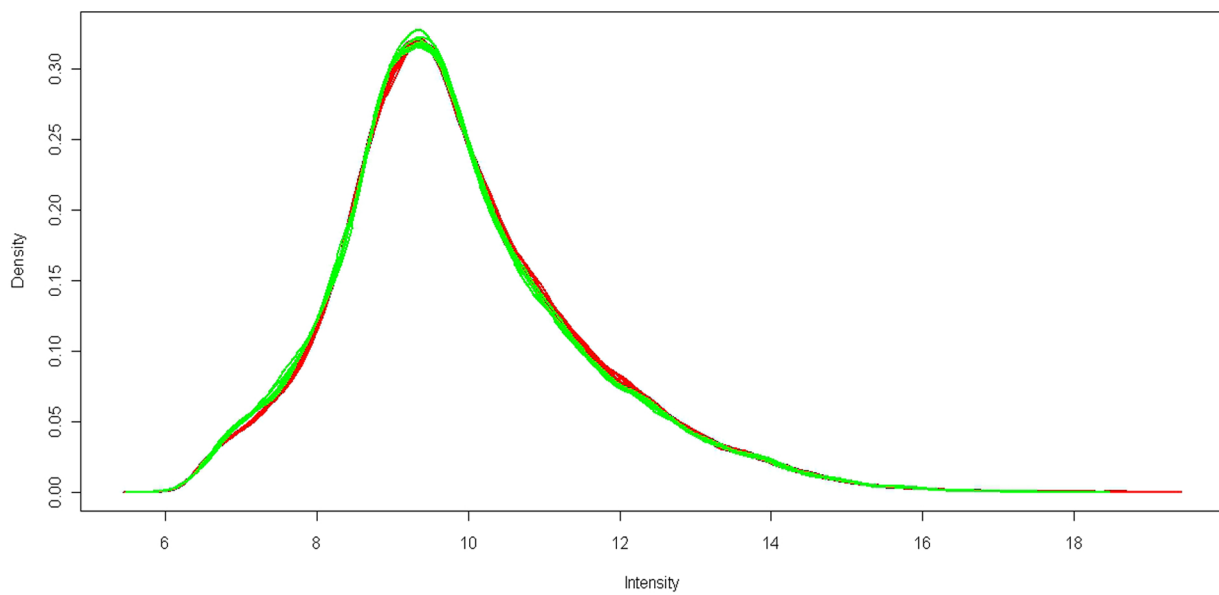
A**RG densities****B****RG densities**

Fig. S1 The plotDensities function which displays the smoothed empirical densities for the individual green and red channels on all arrays. A. The individual green and red channels on all arrays before normalization. B. The individual green and red channels on all arrays after loess normalization within arrays and Aquantile normalization between arrays.

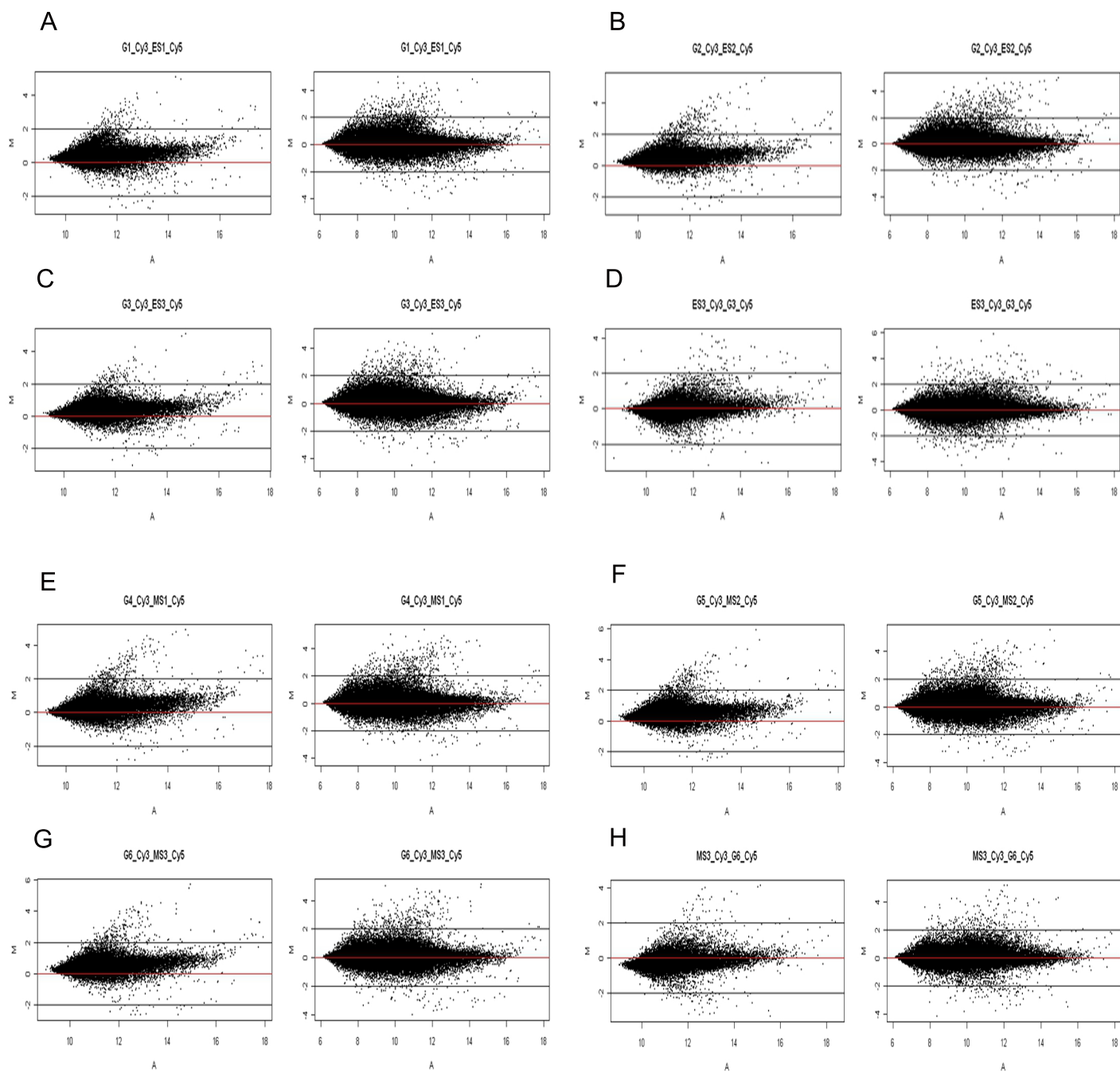


Fig. S2 The MAplot for each microarray before (left of each panel) and after loess normalization (right of each panel). A. Early sporophyte rep 1 (Cy3) vs. gametophyte rep1 (Cy5) B. Gametophyte rep 2 (Cy3) vs. early sporophyte rep 2 (Cy5) C. Gametophyte rep3 (Cy3) vs. early sporophyte rep3 (Cy5) D. A dye swap early sporophyte rep3 (Cy3) vs. gametophyte rep 3 (Cy5) E. Gametophyte rep4 (Cy3) vs. mid-sporophyte rep1 (Cy5) F. Gametophyte rep5 (Cy3) vs. mid-sporophyte rep2 (Cy5) G. Gametophyte rep. 6 (Cy3) vs. mid-sporophyte rep. 3 (Cy5) H. A dye swap with Mid-sporophyte rep. 3 (Cy3) vs. gametophyte rep. 6 (Cy5)

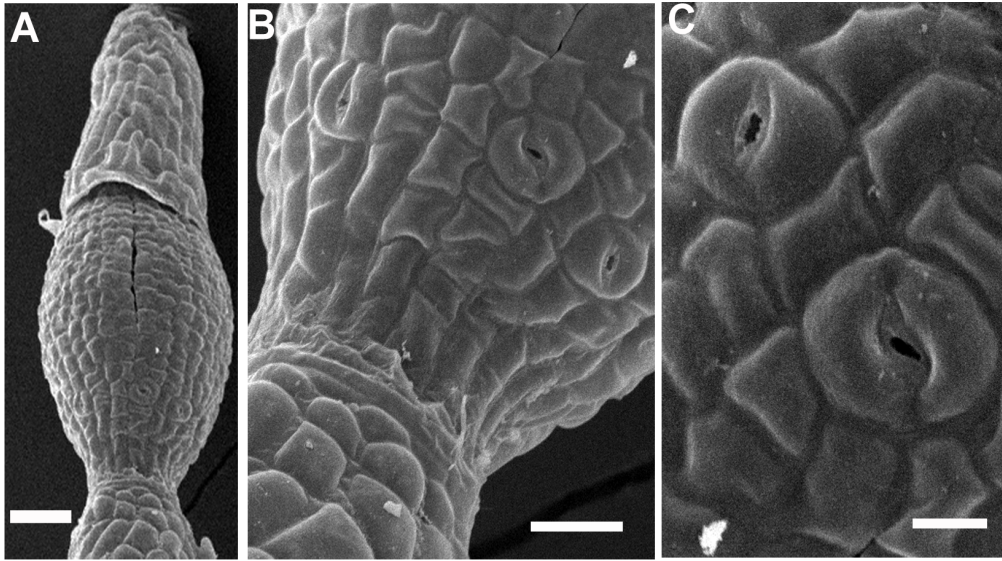


Fig. S3 The mid-stage expanding *P. patens* sporophyte and its mature and open stomata.
A. Expanding capsule attached to gametophore, with calyptra intact. Bar = 50 μm .
B. Close-up of base of A, showing ring of mature stomata. Bar = 25 μm .
C. Close-up of stomata, showing pore into the substomatal cavity. Bar = 10 μm