

SUPPLEMENTARY DATA

FIG. S1. STRUCTURE analysis of Tunisian and western wild cardoon, together with leafy cardoon and artichoke at $K = 3$.

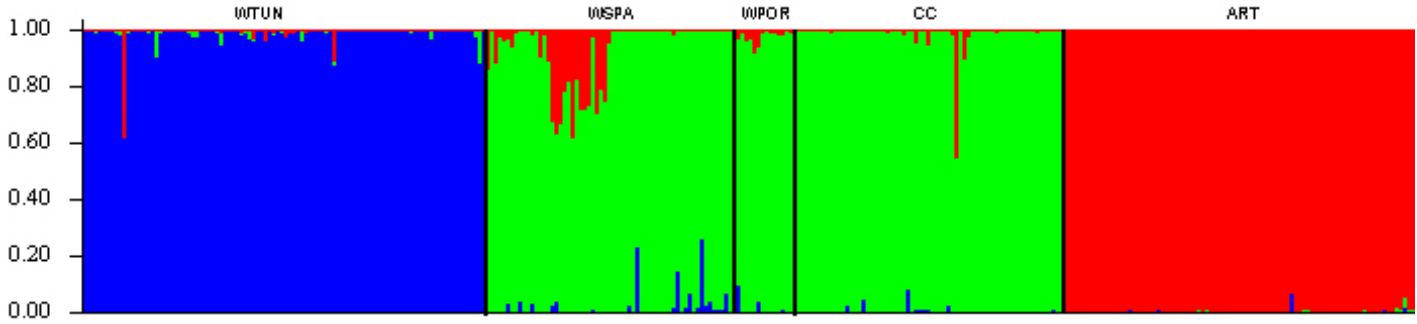


FIG. S2: STRUCTURE plot for cultivated cardoon at $K = 2$.

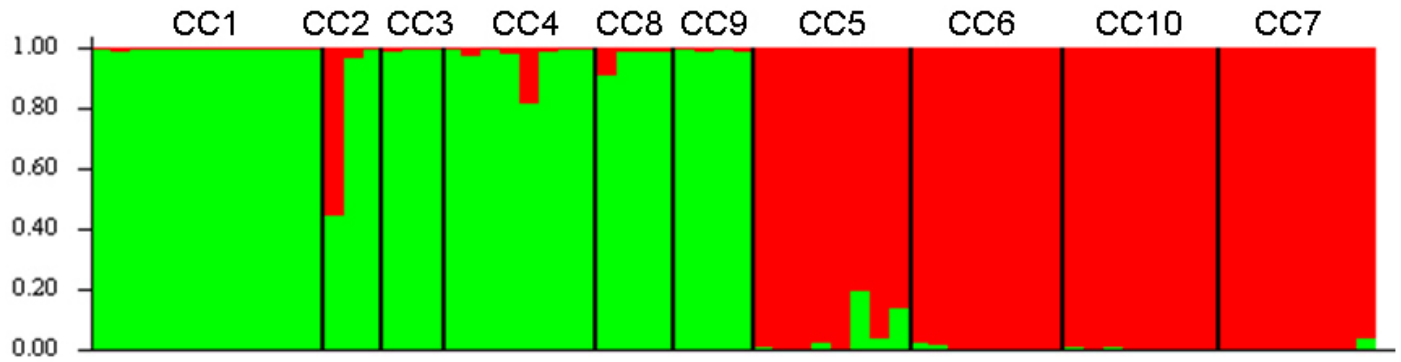


FIG. S3: STRUCTURE analysis on artichoke samples at $K = 2$ and $K = 4$.

