

Fig. E-1
 Measurement of metacarpophalangeal joint angulation.

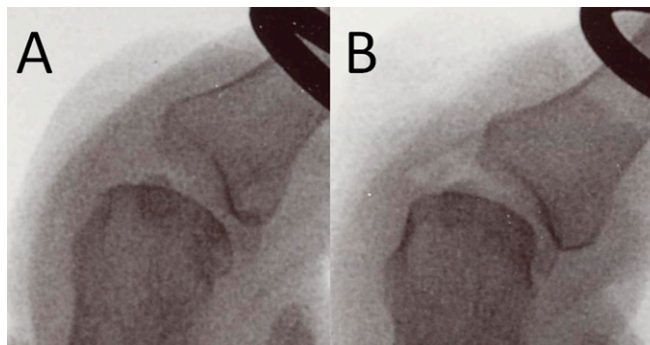


Fig. E-2
 Posteroanterior images of joint angulation by ulnar gapping following release of the proper ulnar collateral ligament (**Fig. E-2A**) and angulation with radial translation following release of the proper and accessory ulnar collateral ligaments (**Fig. E-2B**).

TABLE E-1 Baseline Radiographic Parameters in Stressed Thumbs with an Intact Ulnar Collateral Ligament			
	Mean and Stand. Dev.	Minimum	Maximum
Maximal joint flexion (°)	53 ± 12	34	78
Maximal joint hyperextension (°)	21.7 ± 14	-18	54
Maximal flexion-extension arc (°)	75 ± 20	27	116
Valgus angulation* (°)	20 ± 8	1	40
Ulnar gap* (mm)	5.1 ± 1.3	2.3	8.0
Radial translation* (mm)	1.5 ± 0.9	-0.3	3.4

*Metacarpophalangeal joint at 0° of flexion.