

# Unstained Whole Mount

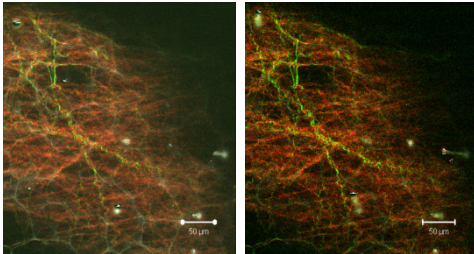
**A**

GFP-mouse

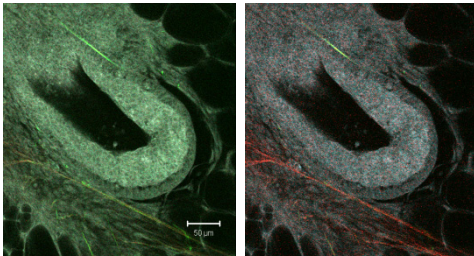
Ex 860

Ex 890

SHG-B  
SHG-F



SHG-B  
Autofl  
SHG-F

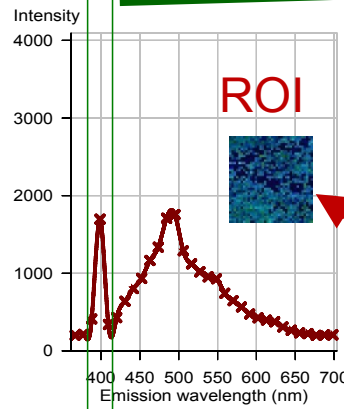


**B**

GFP-mouse

Ex 800

Em 400 peak



Ex 800 nm/ Em 382-414

SHG-B

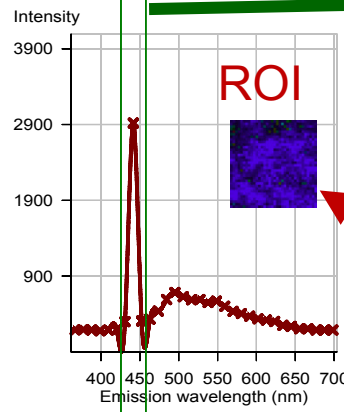
50 μm

Ex 800 Em 367-698

λ coded

Ex 890

Em 445 peak



Ex 890 nm/ Em 425-457

SHG-B

50 μm

Ex 890 Em 367-698

λ coded

**C**

Ex 800

Ex 890

